

'Like a friend dropping in'



The Elmswell Newsletter



More than thirty years of Parish Record... all the Community News...

MARCH 2021

On line at elmswell.suffolk.cloud

*Testing Time at Blackbourne
- every weekday*



... see page 15

*Delivery time at Blackbourne,
after 24 years*



... see page 27



*Decision
time on
6th May
... see
Editorial*



Published on the first Friday of every month by the Elmswell Amenities Association Reg. Charity No. 304879.
1,950 copies delivered free to households and to businesses in the community. A volunteer enterprise entirely supported by advertising.

PLEASE SUPPORT OUR ADVERTISERS

EAA@elmswell.org.uk



Our editorial is designed to inform and to encourage debate. If you wish to comment, please do so via the office or by email at; eaa.elmswell.org.uk We reserve the right to edit any such contributions that we may use in a subsequent edition.

We are advised to follow the data not the dates.

Nevertheless, we have some dates. 'On or after' dates. Definitely not Best Before. Some invitations to dream which suggest that there is a possibility, figures permitting, that, statistics allowing, we can, assuming the slides show graphical safety, consider the possibility of realising aspirational milestones such that:



On 8th March our children, who, tradition demands, hate school, will rush back to the classroom to meet and mix, to chase

and chatter, to laugh and learn without the dispiriting distance and the eye strain that the zombie Zoom brings as add-ons to its invaluable core offer. Meanwhile, it is suggested that 'a coffee on a bench' serves as an example of the recreation now allowed to 2 people from different households - otherwise we stay at home.



On 29th March the children are turfed out for the Easter break but our sports clubs can organise games at Blackbourne...

and either 6 people or 2 households can meet outside, including in private gardens, and the STAY-AT-HOME order ends, but working from home is still encouraged and foreign travel remains, largely, banned.



On May 6th we can go to the polls and vote for the first time in over a year during which democracy has been suspended – we have our voice back. It will be different if it is to be safe, but we can flock to Blackbourne or to Wesley and use a sanitised pencil in support of a candidate for Suffolk County Council and for the Suffolk Police and Crime Commissioner. Or, as we are strongly recommended to do, we can vote by post. We have to be aware that postal voting has its critics. A Mr D. Trump writes to warn us of, '...a voter security disaster...a big fraud...' We are probably a little less frenetic than Mr Trump envisages. Rather than the traditional rush to have the results out in the early hours of the following morning, the votes will be sorted and counted over the entire weekend - to ensure the election officials and volunteers are able to do so safely while observing social distancing. We may not get the final results until Monday - but with the terms of office stretching 4 years ahead, this time scale does not seem untoward?

Of course, we could ignore our chance to have our say. On the basis of the well-worn suggestions that, 'they're all the same', 'they only do it for the allowances', and the classic 'snouts in the trough', allegory, we could ignore the election and just carry on moaning.

We could moan about pot holes, litter, fly tipping, dog fouling and, of course Planning. Not forgetting having to pay for school transport and the fact that our children are soon having to use it every day top get to Woolpit because we can't have our own school in our own village. The satisfaction of a good old rant is short lived. The chance to put in place people who might make a difference is also brief – and it only happens, Covid allowing, every 4 years.



On 12th April we can have our hair cut, go to the Library ... and have a drink at a pub - as long as we're outside and sitting down but we no longer need to be tucking into a scotch egg. The Baby & Toddlers can be welcomed back to their new Wesley venue as long as no more than 15 adults attend...similarly Lewis's Karate class at Blackbourne... it's kicking off!



On 17th May, all being well, most social contact rules outdoor are lifted although gatherings of over 30 people will remain illegal, but outdoor theatres and cinemas can reopen. Indoors, the rule of 6 or 2 households will apply - Indoor hospitality, entertainment venues such as cinemas and soft play areas, the rest of the accommodation sector, and indoor adult group sports and exercise classes will also reopen.



On 21st June, barring any backward steps, vicious variants or unknown unknowns it is hoped that all legal limits on social contact can be removed...nightclubs, large events and performances and no-hold-barred weddings will be back.

Clearly, all of the above is in the lap of the virus. Which, itself, relies on our continuing to make it difficult to jump from one to another as we relax into pre-pandemic hugging frenzies and declare unfettered sneezing to be a human right.



There is, however, a date which definitely gives us more control.

We can make our cross, or we can just get cross.

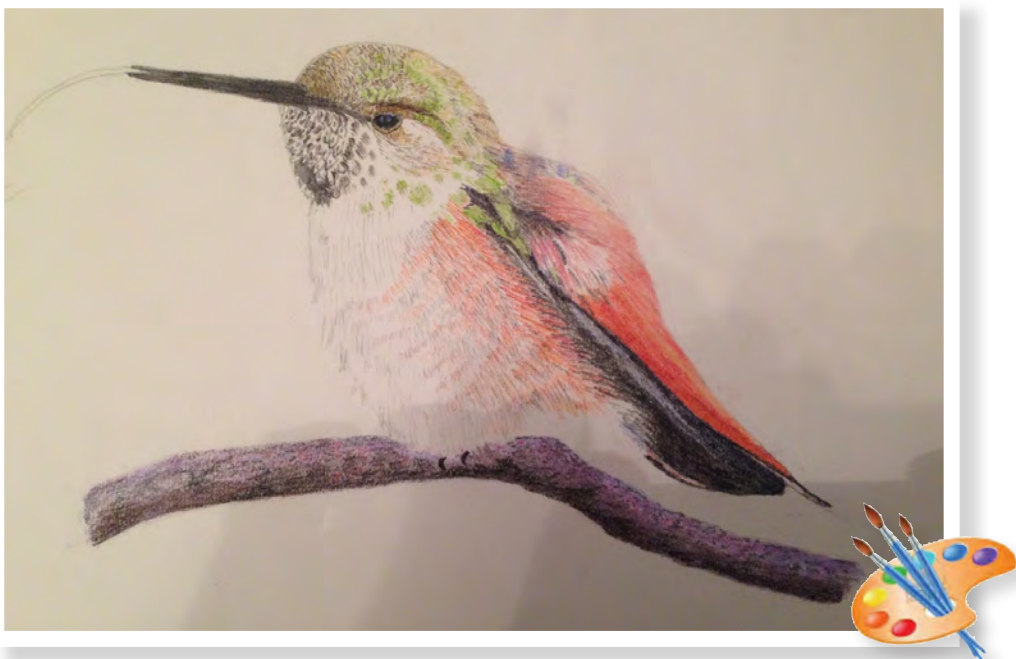
“... a date that definitely gives us more control ...”





ELMSWELL ART CLUB

Way back in 1670, give or take a year or two, the very last known Dodo finally died, thereby adding to the growing list of creatures to become extinct. How this death occurred is open to debate: did it die a natural death caused by old age, did it die of loneliness, or was it clubbed to death by a passing sailor pleased to find a creature so tame and docile as to make it's fate easy and it's last journey to the cooking pot inevitable? More likely it was killed by once domesticated animals introduced by settlers, feral cats and dogs, rats, pigs and the like, it's a trend that has been repeated time and time again. Fast forward 70 years to Oxford and the Ashmolean Museum named after a fellow called Ashmole - now there's a surprise! This museum has a superb reputation, unrivalled collections and is rightly rated as one of the leading museums in Europe. However, 70 years after the Dodo breathed it's last the then museum director decided that the stuffed and preserved Dodo in the collection was looking a bit tired, dowdy and moth eaten so he made an important decision, he threw it on the bonfire! Just a bit hasty you might say! Fortunately a museum worker was rightly horrified at such a rash action and managed to save what bits he could from the fire and these are now safely locked away securely and are not available to view by the general public, only by



legitimate researchers. I wonder if the current curator has a key? All is not lost. Modern techniques employed by clever palaeontologists now can work out the size, shape and even sex of creatures by careful examination of bones. Before all these clever and detailed examinations were available, the world had to rely on contemporary artists to give us a picture of what the poor old Dodo looked like. Artists had their uses even then.

Perhaps the best known artist who concentrated almost exclusively on birds was an American named John James Audubon. He was an exceptional ornithologist, naturalist, adventurer, collector and a very good artist and much respected, who specialised in painting American birds. He used to shoot his birds with fine shot and then set them up with wires to place them in natural positions before painting them with water colour, pastel, gouache and an occasional touch of acrylic. His methods would be frowned on nowadays. He gave his name to the American National Audubon Society. He has a range of binoculars named after him too. His artistic endeavours are undisputed but his methods and honesty are now somewhat tarnished. He recalls a four day trip in 1813 to Kentucky where he observed flight after flight of Passenger

Pigeons so closely packed the sky was darkened. He estimated this flock to be as high as a million individual birds. Generally many experts suggested the total Passenger Pigeons count was as high as 3 billion but within 50 years this bird was completely extinct! When he was preparing his comprehensive guide of all American birds he came over to England to avail himself of the very best colour reproduction printing anywhere in the world. Feather in our cap as you might say!

Our paintings this month are of birds done in completely different styles. The peacock was painted by Caroline Cooke in lovely soft water colours. The hummingbird was a pastel pencil effort done by myself. In the eastern half of the USA it is known as a Ruby Throated Hummingbird whilst in the west side of America it is called a Rufus Throated Hummingbird.

John Welford 01359 240166



**The worse my drawings
were the more beautiful
did the originals appear**

John James Audubon



PARK GARAGE SERVICES

Units 1-2, Station Rd Industrial Estate, Station Rd, Elmswell, Bury St. Edmunds, Suffolk IP30 9HD.

ALL TYPES OF SERVICING - WELDING - MOT WORK - CLUTCHES - EXHAUSTS - SHOCKS
AIR CONDITIONING - TYRES - COMPUTER DIAGNOSTICS - BATTERIES - CAMBELTS - BRAKES











Your LOCAL GARAGE with over 20 years experience servicing and repairing all makes and models.

TEL: 01359 242479 OR VISIT: WWW.PARKGARAGESERVICES.CO.UK

Hicks TV & Audio Solutions

(Formerly BV Hicks Ltd)

Are you having trouble setting up or operating your TV / Audio or DVD?
Has your equipment stopped working?
Does your TV need a re-tune?

Help is at hand - Call Toby Hicks
01449 771991 / 07968 686035

NEW DOMESTIC APPLIANCES AND TV PRODUCTS SUPPLIED



Residential & Commercial Cleaning Services

- Carpets
- Upholstery
- Curtains
- Hard Floors

call Peter on 01359 241577
email: peterjedmonds@tiscali.co.uk
ServiceMaster West Suffolk
Little Acre, Ashfield Road, Elmswell IP30 9HJ

The Old Tea Room Veterinary Surgery

For a professional caring service

Tel: 01359 241 761

Station Road, Elmswell,
Bury St Edmunds IP30 9HA

www.elmswellvets.co.uk





HAYWARDS

SOLICITORS

FOR ALL YOUR FAMILY LEGAL NEEDS

We offer Fixed Fees at Competitive Rates

Telephone: (01449) 613631
email: enquiries@haywards-solicitors.co.uk
www.haywards-solicitors.co.uk
Free Car Park Available For Use By Clients.
7 - 9 TAVERN STREET, STOWMARKET, SUFFOLK IP14 1PJ



F. G. BROWN - OPTICIANS

Denmark House,
41 Bury Street,
Stowmarket

Tel:- 01449 612812/674030

As independent opticians we offer a more personalised eyecare service that you can trust for all the family including:-

- Optomap retinal examination
- Colorimetry

A wide range of competitively priced frames and spectacle lenses

- Contact lenses

Prescription and non-prescription sunglasses

Your sight care is our priority

CLUBS & SOCIETIES



ELMSWELL EXCHANGE AFTERNOON WI

Another month passes us by and still we don't really know for sure if we can meet in April. This will, no doubt, become clear in the coming couple of weeks. Meantime, there are changes afoot. We know that we have members who will not be joining us when we recommence. Life moves on and peoples' circumstances change in the course of a year, some much affected by the pandemic and it's restrictions. Families have become much more important and we have members who will be moving away to be closer to loved ones. Also some are no longer well enough to manage the meetings. This, in reality, was to be expected. The committee is also diminished (we are now five) and when we begin again we will be seeking some help and hope the response will be positive. We will be looking to increase our membership over the remaining year and into the future.

We will probably concentrate on new ladies moving into the village.

There is some good news, however. We have had permission to reduce our own portion of the annual subscription. Our treasurer, Carol, has poured over the budget and managed to reduce this to just £5. This we hope will help some of our members with their own budgets. We will have to pay an increased fee for the use of The Wesley Centre so the £5 was necessary. However, depending on what transpires this year it may be possible to reduce this again next year. It will certainly be considered.

Everyone was very saddened by the death of Capt. Sir Tom Moore. Somehow we all felt he was invincible. I know it ruined my day and that of many of our members. I think everything is being thrown at us at present. Having confidently told someone, I can't recall



who, that we would probably never see snow again it decided to blanket us in the stuff. Brilliant when you are a child but not so much when you are elderly. My goodness wasn't it cold.

Memories are made of this !!!

Never mind, Spring is definitely on the way and "tomorrow will be a good day".

Keep Safe.
Maureen Davis



"COMPANIONS"

What are "Companions"?... friends?, pals?, mates?, partners? or just company. During lockdown we are missing being together on a Friday morning to see "scrabbles" trying to find words with the highest score; "puzzlers" looking for the pieces to fit in the jigsaw; "cribbers" aiming to beat each other at cards; even colourists sharpening pencils to make lovely pictures.

All this activity is accompanied by numerous cups of tea, coffee and biscuits served by our willing volunteers.

By now some of us have been very fortunate to have received 2 vaccine jabs and many have had their first jab so we hope there is light at the end of the tunnel and we can meet again to carry on with these activities or even chat amongst ourselves.

Always thinking of you, Linda Waspe 01359 242224



Ancient Treasures Dug Up in the Garden

A little while ago, some of us were fortunate enough to hear a talk by local historian and former "Time Team" presenter, Helen Geake, about The Portable Antiquities Scheme. This scheme was brought about by The British Museum after the Law of Treasure Trove was replaced by the Treasure Act 1996. The trouble was that information tended to get lost on objects not judged to be 'treasure', and they were being unearthed in increasing numbers. In 2019, just over 81,000 archaeological objects were found and logged by the scheme and, during 2020's first lockdown, over 6,000 objects were reported, often having been dug up in gardens. Many are kept by the finders, but historians very much value records of where they were found – the photographs and information on the PAS website are fascinating. The Suffolk region is exceptionally rich in archaeology, and the PAS typically record several thousand objects annually. This data is then fed into their Historic Environment Record where it helps to develop and enhance our knowledge of Suffolk's past. A number of both regionally and nationally important finds have been reported to the PAS in Suffolk since the Scheme was established here in 1998.

Key prehistoric finds include the Dallinghoo (or Wickham Market) coin hoard, the largest deposit of British Iron Age gold coins recorded in the modern era, and a Bronze Age socketed axe mould from Sutton, which provided important information about how these complex axes were made. Roman finds include a votive hoard of copper alloy objects buried in a pottery vessel, found near Bury St Edmunds, a copper-alloy military harness pendant from Thelnetham and a knife handle with a lion terminal from Battisford.

Suffolk is perhaps best known for its Anglo-Saxon archaeology, thanks particularly to the discovery of the rich burial site at Sutton Hoo in Edith Pretty's albeit rather large garden. (The story is now dramatised in a major new film "The Dig", in which actor Ralph Fiennes starring as the Rickinghall self-taught amateur archaeologist Basil Brown, honed his Suffolk accent with tuition from local dialect expert, Charlie Haylock.) Many unusual and sometimes spectacular Anglo-Saxon finds have been reported to the PAS in Suffolk, including a rather fine early Anglo-Saxon equal-armed brooch from Beyton, and an unusual pair of conjoining unfinished wrist clasps from Sutton.



The Dallinghoo coin hoard.
Copyright: Suffolk County Council

Suffolk County Council's Archaeology Service regularly works with local metal detectorists to carry out survey work as part of larger projects, as indeed it did with EHG's own research into Elmswell's 'Lost' WW1 Aerodrome. Currently the Mildenhall Hoard Project is working in partnership with the British Museum to investigate the find-spot of the famous Mildenhall Treasure, and the Rendlesham Project is examining the site of an important Anglo-Saxon royal centre. If you are interested in finding out more about Suffolk's diverse archaeology, then visit the 'get involved' section of the site to find out more.

The National Trust has also reported on an increased number of historic treasures unearthed in 2020, as many of us found that gardening was the new "keep fit gym"! A superb and large Roman mosaic was discovered in Chedworth (Gloucestershire), a £75,000 hoard of South African gold coins (banned by Margaret Thatcher during the apartheid era) was unearthed in Milton Keynes, a £14,000 trove of more than 60 gilt Tudor coins bearing the initials of Henry VIII's wives "popped out of the ground" in Hampshire where a family were doing the weeding, and a bronze seal matrix of St Margaret was found in a Lincolnshire

garden. This may have been connected with the church of St Margaret in the hamlet of Ketsby. Although the church itself disappeared before the middle of the 19th century, it was a place of pilgrimage where an image of St Margaret was still attracting notable offerings in 1529. Also showing St Margaret, a 700-year-old almond-shaped seal matrix was found in 1992 at King's Lynn in Norfolk. The habit and importance of making local pilgrimages in medieval times has been explained by Exeter University's Professor of History, Nicholas Orme, in "Medieval Pilgrimage", as well as by Irish historian, Eamon Duffy, who is Cambridge University's Professor of the History of Christianity.

The tantalising question is "what buried treasures have yet to be found?"

Kings John's Missing Jewels – In 1216, while travelling from Lincolnshire to Norfolk, "Bad" King John ordered those in charge of his baggage train to take a shortcut through a particularly treacherous ford in The Wash, only accessible at low tides. Most of the King's luggage was lost to incoming waves – including, probably, his ornate crown and jewels. Historians are not sure exactly what was lost, but the legend has been enough to excite generations of detectorists. In



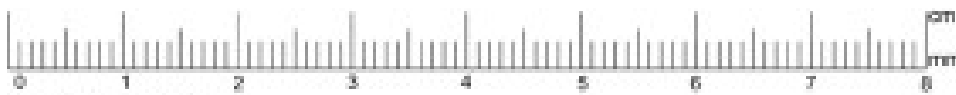
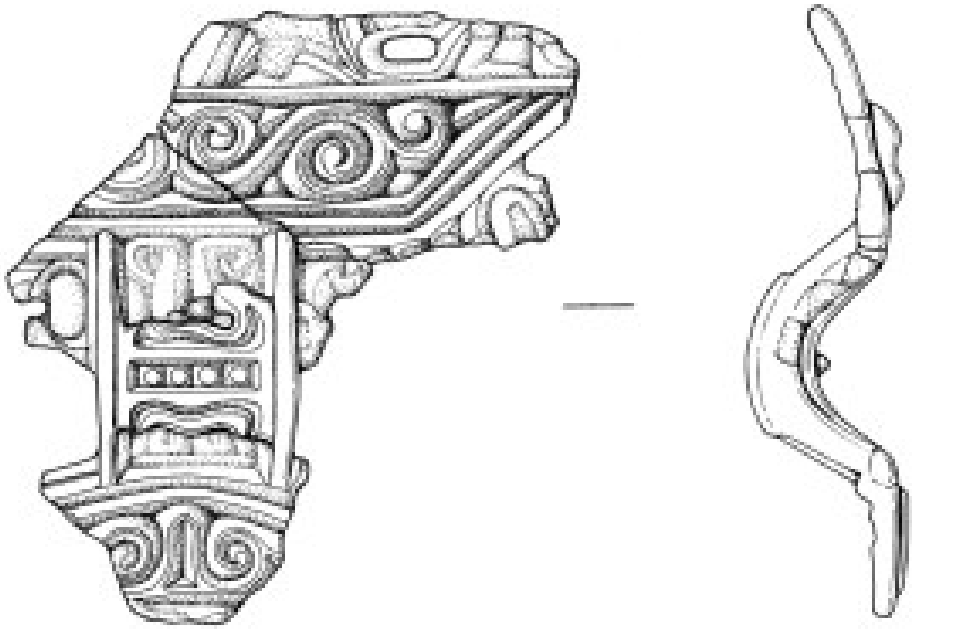
the 1930s a rich American even set up the Fen Research Company to sweep the area; and more recently a London barrister hired a dowser to help solve the mystery. Both left empty-handed.

Pepys's Gold – In 1667, as the Dutch navy sailed towards London, diarist Samuel Pepys panicked that his gold would be seized. He dispatched his wife, Elizabeth, to their home in Brampton, Cambs, where she buried the gold in a vegetable patch, in much haste, before the servants would see! However, when he looked a few months later, Pepys couldn't find the gold.

The next **Sutton Hoo** – East Anglia could still be teeming with Anglo-Saxon artefacts, as Norfolk and Suffolk were among the most populated areas of England during the early medieval era. The land in these counties is also very arable, with lots of farming, meaning objects that are buried are more likely to rise to the surface.

King Harold II – Historians are not sure where the last crowned Anglo-Saxon king was buried after he (allegedly) died with an arrow to the eye at the Battle of Hastings. Some records point to Bosham in W.Sussex, others to Waltham Abbey in Essex. His discovery is unlikely but not impossible, as shown by the excavation of a curve-spined Richard III beneath a Leicestershire car park in 2012.

So, here are more reasons why an active interest in both gardening and history are so good for you. However, please bear in mind current Covid guidelines - for the current government advice on searching for archaeological finds (with a metal-detector, field-walking or mudlarking) in England during COVID-19, please see: <https://www.gov.uk/guidance/guidance-on-searching-for-archaeological-finds-in-england-during-covid-19>



Drawings at 2:1 scale

Anglo-Saxon equal-armed brooch from Beyton.

Copyright: Suffolk County Council.

Drawing by Donna Wreathall.



Sutton Hoo helmet

Latest reconstruction
(built 1970–1971)
of the Sutton Hoo helmet

Material	Iron, bronze, tin, gold, silver, garnets
Weight	2.5 kg (5.5 lb) (estimated)
Discovered	1939 Sutton Hoo, Suffolk 52.08934°N 1.33806°E
Discovered by	Charles Phillips
Present location	British Museum, London



Sutton Hoo: a photograph of the site in 1939

**Elmswell
History
Group**

For further information about our History Group, please visit our website –

www.elmswell-history.org.uk

or contact our Secretary, Stella Chamberlin on 01359-242601

P H Peckham

Plumbing and Heating Engineer

28 Eastern Way

Elmswell

Tel. 01359 240958

Mob. 07802 642884

Email:

phpeckhamplumbing@gmail.com

Gas Safe Register No 214650



214650



- 24 HOUR CALL OUT
- FREE Estimates
- Corgi Registered Solid Fuel, Oil or Gas
- Bathroom Suites Designed and Installed
- Water Softeners Fitted
- Tiling
- Boilers Serviced

Wayne Salmon Electrical

For all your electrical requirements - Domestic, commercial and industrial.

All work carried out to a high standard.

Mobile 07843 302798



M.O.T. DUE

Require a quick reliable service ?

M.O.T. classes 4 and 7 tested.

Tests available for all types of cars and vans up to 3.5 tonnes gross.

Local collection service available.

Also repairs and servicing available on request.

**D A BEVAN
THE WORKSHOP
GROVE LANE
INDUSTRIAL ESTATE
ELMSWELL**

PHONE 01359 241158 / 244421

TONY FISHER PLUMBING & PROPERTY MAINTENANCE

- 24hr Emergency Callout
- Bursts, leaks, blockages etc.
- Bathroom/shower installation
- Tanks/cylinders/radiators
- Tiling floors/walls
- Painting & Decorating
- General DIY jobs
- Garden Maintenance

Tel. 01359 242556

Mobile 07758327743

Reliable & Friendly Service!

BLOMFIELD MAINTENANCE

GAS ENGINEER
Natural and Propane (LPG)

Servicing and repairs of:
BOILERS, COOKERS, FIRES

COMMERCIAL CATERING
EQUIPMENT

Installation of:
COOKERS and HOBS



LANDLORD GAS
SAFETY CHECKS

01359 241454

07889 616937

DAVID MARTIN MOTOR VEHICLE ENGINEERS & CAR SALES



The Washers Place, Station Hill, Thurston, IP31 3QU
www.davidmartinmotorengineer.co.uk
Info@davidmartinmotorengineer.co.uk
Open 8am-5pm Monday-Friday
Tel: 01359 230536 Mob: 07808508864

Local, honest, friendly, reliable family run business offering car and light commercial vehicle repairs at competitive prices

We are proud to be members of the Good Garage Scheme, check our feedback @ www.goodgaragescheme.com

NO WORK IS CARRIED OUT WITHOUT FULL CONSENT FROM THE CUSTOMER

- Servicing on all makes & models (incl. vehicles still under main dealer warranty)
- Tyres supplied & fitted (same day if ordered before 12pm)
- MOT tests & repairs
- Brake overhauls
- Cam belts
- Diagnostics
- Tracking
- Courtesy car (subject to availability)
- Welding
- Exhausts
- Batteries
- Vehicle recoveries
- Bodywork

COVID-19

To keep our customers and staff safe we are offering a contactless service.

- Bookings can be made via telephone or email (details above)
- Where possible we are asking customers to drop off their vehicles and post keys through letterbox
- Payments can be made by card over the phone or via BACS transfer.
- We are offering a free collection and delivery service

MOT & Service

(including vehicles still under main dealer warranty) FROM

£135 inc. VAT

(Subject to Labour time and parts prices)



All MOT's

£45

Class 4, 5 (including & 7 up to 3.520kg) incl. plus 1000kg

FREE air con. check
Re - gas from £50 plus
VAT



GARDEN WARFARE LANDSCAPES

**PATIOS - FENCING - SHED BASES - DECKING
DRIVEWAYS - MAINTENANCE - TURF & ARTIFICIAL GRASS**

WWW.GARDENWARFARELANDSCAPES.CO.UK

INFO@GARDENWARFARELANDSCAPES.CO.UK

01359 760005 - 07780 313330



ELMSWELL GARDEN CLUB

As I come to write this month's article for the Elmswell Newsletter, I began to reread the article submitted in March 2020. It was Elmswell Garden Clubs report of the first and only meeting of the year. Little did we know that life was going to be quite different.

Luci Skinner from Wooten's of Wenhashton shared the secret of how to grow amazing Auriculas on the 18th February. A beautiful yet understated plant, cousin of the humble cowslip and primula. Walking through the village today I was amazed to so much evidence of this plant family in Elmswell gardens and along the side of the road. The yellow cowslip peeping from under beech hedges were just as bright as the daffodils. There were primulas of all colours glowing by the side of sturdy shrubs, still not quite sure whether it is good enough to 'wakeup'. It is a little early for my Auricula to hold its delicate flowers high on its slender stem, but another month and its time will come. How pleased I am that along with other members of the Club I purchased a small plant to nurture. Throughout last year I was able to have many months gazing at the intricate design each petal held. The cold weather we have endured in recent weeks made me wonder if this would be the end of my little plant, but I am pleased to report it has survived.



As we begin to contemplate a life of less restriction the natural world will still give comfort Elmswell Garden Club members will be pleased when the weather becomes more cooperative. However, I do hope that the many people who found time to look after their outdoor space enjoying the satisfaction of growing something themselves will begin planting pots, borders, and vegetable beds once again so that they can enjoy the fruits of their own labour in 2021. Maybe you will consider joining EGC later in the year when we are able to meet. In more ways than one it will be an exciting start as the Club has secured the new Wesley Hall for our monthly evening meetings. Speakers are provisionally booked for the time we can safely get together. If you have just moved into a new house and need inspiration to transform your new space, please consider joining us.

If you require further information about Elmswell Garden Club (EGC), please contact Catherine, on 01359 242172 or Nick, on 01359 242601.

The Club email is elmswellgardenclub@gmail.com and a good way of asking a question that will be swiftly answered.

NHS HAMPERS

I would like to thank all the residents of Hawk End Lane, friends and family and friends of friends and other residents of Elmswell who donated to my appeal for goodies to make up "THANK YOU HAMPERS" for the NHS staff at West Suffolk Hospital and Woolpit Health Centre. The response has been wonderful thank you all.

Ann Hollings



Bury St Edmunds




Discount Printer Ink Cartridges

(2 Down) Voted UK's #1 Ink Brand by **Which?** Subscribers

1	2	3
	4 LOCAL	
5		6
7 SPEND		8 LE
	9	
10 BUSINESS		
	11 N	
12		
	12 K	

Shop Online
1,000's of Quality Original and Compatible Ink Cartridges in Stock Now!

Down

1, Swedish Band
3, The Great British ___ Off
6, Frozen water

Across

5, To draw attention
12, Capital of Thailand



www.moreinks.co.uk/ELMSWELL

TBS HIRE

Available to Hire from
a modern Fleet:

- Diggers & Dumpers
- Access Equipment
- Power Tools
- Concreting Equipment
- Landscaping & Garden Machinery
- Stump Grinders and Chippers



Plant & Tool servicing and
repair also undertaken

Thurston Rd,
Great Barton,
Bury St. Edmunds, Suffolk, IP31 2PJ
T: 01284 788122
E: info@tbs-hire.co.uk

www.tbs-hire.co.uk



FENCING, GARDENING & PATIOS

All fencing supplied and erected
All garden work...regular maintenance or one-off

- Grass cutting up to 3½ acres
- Garden Clearance
- Tree Felling • Stump Grinding
- Concrete bases laid • Sheds erected
- Turf Laying • Artificial Turf
- Driveways • Pressure Washing
- Garden machines serviced and repaired

No obligation quotes

Contact Andy

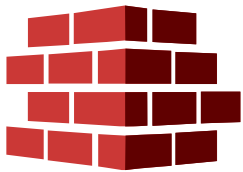
01449 403050 077487 85197

wade.andrew63@gmail.com

01359 259 259

CLARKES

Suppliers & Manufacturers Agricultural, Retail & Building Materials



BUILDING MATERIALS



FENCING SUPPLIES



POWER TOOLS



GARDENING PRODUCTS



CALL



CLICK



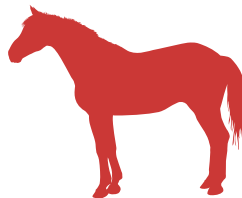
BUY IN STORE



SHOOTING SUPPLIES



COUNTRY CLOTHING



EQUESTRIAN PRODUCTS



ANIMAL FEED

www.clarkesofwalsham.co.uk

Clarkes of Walsham Limited
The Street • Walsham-le-Willows • Bury St Edmunds • IP31 3BA
Monday - Friday: 7.30am - 5.15pm Saturday: 8am - 4pm

Clarkes of Walsham at Jimmy's Farm
Pannington Hall Lane • Wherstead • Ipswich • IP9 2AR
Open 7 Days a week

CLUBS & SOCIETIES



ELMSWELL OVER 55'S CLUB

Ok so here I am again still in "Lockdown", I am not looking to open the club until June/July subject to any guidelines from Boris on February 22nd. I am currently in lockdown until March 28th so it will be some time before I am allowed to socialise.

The committee and myself hope you are all keeping your chins up and looking forward to be able to get back to normal.

In the mean time we have a reservation at Clarence House Hotel in Tenby (S wales) for Monday July 12th (4nights) can you contact me if you are interested as soon as possible it is also open to anyone who would a UK break if lockdown is lifted.

Those members who paid subs early in 2020 will be rolled over for 2021

In the meantime a small selection of photos have been picked out from our vast collection by Grant and myself showing various events held in the Memorial Hall.

Diann (241002)



Ash Wednesday at home:

Find a place of silence. After a moment, begin by saying:

In the name of the Father and of the Son
and of the Holy Spirit. Amen.

Keep a period of silent prayer before saying the collect:

Holy God, our lives are laid open before you:
rescue us from the chaos of sin
and through the death of your Son
bring us healing and make us whole
in Jesus Christ our Lord. Amen

Keep a period of silent reflection on your sins before saying:

ST JOHN'S CHURCH

Greetings from St John's Church.

At the moment we are in a season called Lent. This is traditionally a period of fasting and praying that mirrors Jesus' time in the wilderness. Lent is also a time of preparation for the celebration of the death and resurrection of Jesus at Easter and the good news of the new life Christ brings.

In February, we celebrated the start of Lent on Ash Wednesday at home using the visual aid of stones marked with crosses made out of ash. Ash is a powerful symbol, reminding us of our own mortality, but the sign of the cross reminds us that Jesus took on our mortality and died in our place so we could gain forgiveness and eternity.

Lent is often a time when people give up something. However, instead of giving up something Lent this year, why not take something up instead, like an act of generosity?



At St John's we support the work of the Stowmarket and Area Foodbank. The Foodbank provides for individuals and families who are in crisis with emergency food parcels. This need is now greater than ever before. In particular, tins of flat fish, potatoes and rice pudding and any sort of instant noodles (just add hot water) would be greatly appreciated. Simply drop anything off at The Rectory on Church Road and we will pass it on.

A very enjoyable evening in late February was our Zoom Quiz Night. This was good fun with lots of laughs and included a range of questions that truly levelled the playing field. During these days, where it is difficult to see each other in person, such evenings really do help to keep the spirits up. They say laughter is the best medicine.

For the month of March we are planning to continue worshipping online (although, these days, plans often get overturned). We meet online via Facebook and YouTube every Sunday at 10:30am, immediately followed by a time to catch up with "Coffee and Chat" over Zoom. If you would like a DVD of the service delivered, please let the Rector know. You are very welcome to join us – details to connect to services are below.

Our Sunday School is also held over Zoom at 9:30am on Sundays (except for March 7, when the 10:30am service is a family service). Please contact us if you would like your children to join Sunday School.

Weekly Diary for March:

Sunday:

- 9:30am Sunday School via Zoom (not March 7).
Contact us for details.
- 10:30am Service streamed on Facebook and YouTube.
Followed by Coffee and Chat via Zoom.

Tuesday and Thursday:

- 8:00pm Night Prayer streamed on Facebook

Saturday:

- 9:00am Weekly prayer meeting via Zoom.

10:30am Coffee and Chat via Zoom

Rector: Peter Goodridge

Email: elmswellrector@gmail.com

Tel: 01359 240512

Web site: www.stjohnselmswell.org.uk

Facebook: www.facebook.com/stjohnselmswell

YouTube: accessed via our website home page

Zoom: See weekly newsletter on our web site or Facebook for details.



ST. JOHN'S CHURCH TOWER FLOODLIGHTING

You are invited to sponsor the floodlighting of St. John's to help with the day-to-day running expenses of our parish church. You can choose to commemorate a personal event, an anniversary, or any other special occasion. Alternatively you can simply make a donation.

During March the lights will be on between 6.30 p.m. and midnight.

A night's floodlighting costs £5.

Please make cheques payable to "ST. JOHN'S CHURCH, ELMSWELL".

MARCH 2021 SPONSORSHIPS

- 2 Margaret Clarke - remembered with love on her Birthday.
- 7 in loving memory of John Hopewell. "Always in our thoughts".
- 9 remembering Rob Dalby on your anniversary. As always, love from all the family.
- 9 in loving memory of a dear brother, William Cammell (Bill).
Love from Audrey, John and family.
- 14 remembering a dear Mum, Nan and Gt. Nan, Evelyn Simpson, on Mothering Sunday. "God Bless".
- 14 remembering a dear Mum, Nan and Gt. Nan, Dora Handyside, on this special day. "God Bless".
- 14 "Remembered with love" on Mothering Sunday, and always, Mary Skinner. "God Bless".
Margaret & Tony.
- 15 in loving memory of Joyce Ivy Jackson, also her son Barry Anthony Jackson, formerly of Bury St. Edmunds, with Elmswell roots.
- 19 Evelyn Simpson, remembered with so much love, on her Birthday. "God Bless".
- 28 to remember and thank all those past Elmswell Fire-Fighters who served their village and community so well.

All bookings and payments please to :-
Trevor Sadler, Abbots Warren, Church Road, Elmswell (Tel: 240908)





ELMSWELL BAPTIST CHURCH

On Sunday 14th February 2021 St Valentines Day we celebrated our 134th church anniversary our zoom service on that day was led by our friend of many years Rev Rodney Sawtell who explained the origins of St Valentine's Day.

Valentine was thought be a Christian Priest in Rome who carried on marrying people despite marriage being banned by the then Roman Emperor. Valentine taught the message of love to the people sadly the Emperor had him executed but a pope hundreds of years later canonised him so he became the saint of love, his message is so relevant today.

Rodney's text for that day was about "Jesus the good shepherd" an appropriate message for the start of lent. Lent began on 17th February and will end on Saturday 3rd April, this is the period when Christians remember Jesus's 40 days in the wilderness where

he was tempted by the Devil, before he began his ministry, during this time Jesus went without food some Christians will give up their favourite food or luxury as a penance in remembrance of Christ's suffering for the six weeks or so of Lent. We at the Baptist Church take on a period of study by following a York Course where we meet to listen to recordings of eminent Christian theologians offering their thoughts on the Christian faith, we then discuss their words. This year we are following a similar course entitled "Journeying Through Lent" it is a self-study course we meet on Zoom on Wednesday mornings to discuss the thoughts of various Christian Leaders and Theologians who have written the course. If you would like to join us contact our Secretary Tony on 01359 241541 for more details and the zoom codes.

As are most churches we are closed for the foreseeable future our zoom services take place each Sunday at 10.30 am, during March they will be led by:-

- 7th March Rev Norman Tharby
- 14th March Rev Barbara Challis
- 21st March Rev Norman Tharby
- 28th March Carol Almond

We continue to remember in our prayers all Key Workers striving to maintain our essential services, schools/hospitals/police/public services/and more, they all deserve a medal especially the doctors, nurses, clerks, and volunteers who manned our local vaccination centre in

Woolpit during the February blizzard they were truly wonderful if you pray say one for them as they deserve it.

For any information about our church and our activities contact Tony on the above number or go to our website www.elmswellbaptist.org.uk

Thank you, stay safe and trust in Jesus the Good Shepherd.

Dave Hollings

CATHOLIC PARISH OF OUR LADY, STOWMARKET

Parish Priest: Rev. Simon Leworthy, The Presbytery, 29 Lockington Road, Stowmarket, IP14 1BQ

Tel: 01449-612946 E-mail: pp@ourladystowmarket.org.uk

MASS TIMES:

Saturday (First Mass of Sunday) – 6PM
St Mary's C of E Church, Woolpit IP30 9QG

Sundays – 8.30am & 10.15am
Our Lady's, Stricklands Road, Stowmarket IP14 1AW

Holy Days – 10am & 7.30pm
Our Lady's Strickland Road Stowmarket

Weekday services in the Parish are advertised at the front of Our Lady's Church, in the weekly Newsletter and on the Parish Website – www.ourladystowmarket.org.uk

ELMSWELL ARCHIVE

The new Archive room at Blackbourne is receiving all sorts of material tracking the village's history and heritage. Here we see the inauguration of the tree nursery at the Memorial Library in 2003 when donated trees were temporarily planted awaiting the establishment of Lukeswood.

If you have anything of interest by way of Elmswell history, do be in touch with the Council Office – clerk@elmswell.suffolk.gov.uk / tel. 244134...it can be safely stored or scanned / copied for future reference.



KEEVIL ROOFING

Qualified Roofing Specialist
Over 10 Years Experience
Free Quotations & Advice



Contact Will on 07912 663 713
keevilroofing@gmail.com



House completions



Will writing



Family matters



Business legal advice

"It's business as usual..."

We may be working slightly differently
but we've never been closer to our clients"



Burnett Barker
Solicitors

Call **01284 701131**
or visit www.burnettbarker.co.uk

Arboricultural & Landscaping Solutions

- All Aspects of Tree Surgery
- Soft & Hard Landscapping
- Maintenance & Lawn Care
- Fencing
- Domestic & Commercial
- Fully Insured
- NPTC Qualified

For more information please visit:
www.greenscenetreesurgery.co.uk



GREEN SCENE

PLEASE CONTACT US TODAY FOR FREE QUOTATIONS & ADVICE

Phone: 01359 298141 Mobile: 07866 866 880

Email: greenscene@hotmail.co.uk



CITIZENS ADVICE

We've had a lot of issues receiving our post recently and haven't seen our usual postie around in a little while. I know that a couple of Christmas cards I sent in December still haven't been received. And some of my neighbours who are shielding, and completely reliant on shopping online, have had some of their deliveries delayed too. Is there anything I can do?

You're not alone; we know posties are currently working very hard, but we've seen a huge increase in the number of people coming to us for advice about post and parcel issues.

Letters

If you haven't received any letters in your post, think about if there's anything you were expecting like bills that might be due soon. If you're missing a bill you could check your account online to see how else you could pay. Lots of businesses offer online chat, email and phone as a way to contact them.

If you're worried about missing letters about any benefits you receive you can contact the Department for Work and Pensions on the number given on any previous letters you've had. If you have questions about Universal Credit and

don't have a digital account, you can call the Universal Credit helpline on 0800 328 5644

You can check Royal Mail's website for updates on areas which may be experiencing delays. Search 'service update' on royalmail.com.

Parcels

If you bought something from a business to be delivered, it's the seller's responsibility to make sure the item is delivered to you.

If the seller used a courier, they should chase the courier to find out what's happened to your order - it's not your responsibility.

Check the delivery address you gave the seller. Then contact them and ask where your order is.

If the seller claims they've delivered it or

don't know where it is, you can ask for a redelivery. You might be able to get a refund in some circumstances where the delivery time was essential and you let the trader know ahead of time.

Under the Consumer Rights Act, you can ask the seller to deliver the item again if the item wasn't delivered either:

by an agreed date

within a reasonable time - usually within 30 days.

If the new delivery fails to come within a reasonable time you can ask the trader for a refund.

If you ordered something from a private seller or if you think a seller had broken the law by refusing to deliver an item, you can contact the Citizens Advice consumer helpline on 0808 223 1133 for help.

Citizens Advice Mid Suffolk can provide advice on this or any other issue, including debt, housing, benefits and family law. You can contact them on 01449 676060 or use the contact form at midsuffolkcab.org.uk/contact-us.

For more information and our opening hours go to midsuffolkcab.org.uk

**citizens
advice**

Mid Suffolk

AN INVITATION FROM THE ARTS SOCIETY WEST SUFFOLK



The Arts Society is a network of over 90,000 people worldwide brought together through a shared curiosity for the arts and our artistic heritage. Our local West Suffolk branch has been meeting at Blackbourne for the past two years on the 1st Tuesday each month from September through to July and we will be celebrating our 50th Anniversary in 2022! We don't 'do' art, we learn more about it.

TASWS brings people together through a shared curiosity for the Arts. We aim to give members the opportunity to make friends with people of similar interests. We share interesting lectures, study a subject in more detail at Special Interest Days, and organise Cultural Heritage and arts outings (including opera and ballet) both in East Anglia and further afield. We organise and fund a Young Arts Programme and support a sister charity that researches and records Church artefacts. We have supported our 180+ members this past year by embracing Zoom for our

lecture programme. This has proved very popular. We have increased our usual number of meetings to keep us going during a dearth of artistic stimulus. We make our meeting companionable and fun.

You can find out more about our society through our website at www.theartsociety-westsuffolk.org.uk where you can discover our whole programme and read copies of our monthly newsletter.



Our next lecture will be "Zoomed" at 10.45 am on 6th April and is entitled

"Ice Age Art: The First Artists in Europe". With Mark Patton, we will explore the various types of art produced by hunter-gatherers in Europe between fifty and fifteen thousand years ago. This encompasses paintings, drawings, and sculptures of animals and humans on the walls of caves, abstract patterns and portable sculptures of animals and humans in bone, ivory, and stone. Drawing on the latest archaeological and ethnographic evidence, Mark helps us discover the social and cultural context of Europe's earliest art. We would love you to join us, and see what we are all about. It is therefore with much pleasure that we warmly invite you to join us for next month's Zoom meeting as our Guest. Please contact Tony Callender who will provide the Zoom meeting details at callender@cix.co.uk. If we have sparked a more general interest in our activities Sue Barrett would love to hear from you on 07770916961. Should you be unable to join us this month then perhaps next?

Worried about Savings?

Let our team of financial advisers help you to get the most from your savings and investments.

Confused about your pension?

We would be happy to discuss the options available for your retirement planning.

Want to protect your family or income or mortgage and loan?

We are here to advise on the right solutions for your budget.

Mortgages?

For a competitive mortgage, we have advisers to assist with that purchase or remortgage.

Equity Release

We have advisers able to assist you with this area of advice.

Equity Release will reduce the value of your estate and can affect your eligibility for means tested benefits.

We make it



The Old Police House,
Cooks Road, Elmswell,
Bury St Edmunds,
Suffolk IP30 9DB.
Tel: 0345 271 3245



TRAVEL STOP
BIG ENOUGH TO OFFER THE WORLD, SMALL ENOUGH TO CARE

2021 will be the year that we appreciate all that we couldn't have in 2020. Once you have wanderlust in your blood, you have it for life.

Travel Stop has 30 years experience as your local travel agent. We can find the perfect holiday for you.

ATOL / ABTA protected.

Email: elmswell@travel-stop.co.uk

Website: www.travel-stop.co.uk

Telephone: 01359 242555

Find us on the Elmswell Railway Station platform



Little Elms Pre-School

Cooks Road, Elmswell, Bury St Edmunds, IP30 9BX

High quality care and education for children aged 2-5

We provide a nurturing, safe and stimulating environment to build an excellent start to your child's learning adventure

- ✓ Ofsted registered 'Good'
- ✓ Caring, well qualified staff
- ✓ Quality, affordable, flexible child care
- ✓ Large garden

Pre-School

Two pre-school rooms run 8:45am - 3:15pm

- 'Ladybirds' for ages 2-3
- 'Bumblebees' for ages 3-5

Breakfast Club

Runs 7:45am - 8:45am for ages 2-11

After School Club

Runs 3pm - 6pm for ages 2-11

Funded places available

15 hour funded places available for 2-4 year olds

30 hour funded places available for 3-4 year olds



Visit our website:
www.littleelms.co.uk

Give us a call:
01359 260 691

Email us:
info@littleelms.co.uk



ELMSWELL MEMORIAL LIBRARY

Hello Elmswell,

Good news. We are now open again for Select and Collect and for collecting reserves. The book deposit will also be available outside of open hours again very soon. Unfortunately we are not open for browsing at the moment. Our open hours are the same as before the recent lockdown.

Monday: Closed

Tuesday: 10.30am – 1pm and 2.30pm – 7pm

Wednesday: 2.30pm – 5pm

Thursday: 10.30am – 1pm and 2.30pm – 7pm

Friday: 2.30pm – 5pm

Saturday: 10.30am – 1pm

Sunday: 10.30am – 3pm

This month's display will be a display of books that have been made into TV series and films inspired by recent adaptations such as Bridgerton and The Dig.

This month there is the Suffolk Libraries Day Book Festival online. Suffolk Libraries are thrilled to offer this programme of online discussions featuring bestselling authors. The authors include many recognisable names including Sophie Hannah and Bernard Cornwell. The events are free but please make a voluntary donation to support our work. We're very grateful to Larking Gowen for sponsoring the event.

Keep up to date with what services are available through <https://www.suffolklibraries.co.uk/coronavirus>.

I hope you are all enjoying the signs of spring.

Miles

Elmswell Library Manager

Currently reading The house in the Cerulean Sea by T J Klune

What's on at Elmswell Library?

Baby Bounce

There will be a Baby Bounce post on Elmswell Library Facebook page 11am every Tuesday.

The Keep in Touch Community Café

Cancelled until further notice.

Lego Club

Lego ideas will be posted on Facebook every Sunday.

Elmswell Library Friends Group AGM

Postponed until further notice.

Opening times

Monday: Closed

Tuesday: 10.30am – 1pm and 2.30pm – 7pm

Wednesday: 2.30pm – 5pm

Thursday: 10.30am – 1pm and 2.30pm – 7pm

Friday: 2.30pm – 5pm

Saturday: 10.30am – 1pm

Sunday: 10.30am – 3pm



TESTING TIMES

COVID TESTING AT BLACKBOURNE It's free – and they're friendly!

**Mondays, Tuesdays, Wednesdays & Fridays
7am – 1.30pm...Thursdays 12.30pm – 7pm**

Just turn up – or avoid any waiting by booking an appointment – Google Covid 19 testing in Suffolk or ring 0333 772 6144

Problems or queries ring the Parish Council Office on 01359 244134



ELMSWELL FOOTBALL CLUB

TIMBERS FLOORING
REVIEWS

Wood Flooring
Restoration
&
Carpet Cleaning

SUFFOLK, CAMBRIDGESHIRE, ESSEX, NORFOLK

timbers-flooring.co.uk
timbersflooring@gmail.com | 0776 8763 174



Professional painting and decorating group
Residential & Commercial
Specialises in new build spraying
Traditional painters for any job big or small
Call for a free quote
Mobile- 07814240840
Office- 01379 741515
Email- wjcpainters@outlook.com
Website- www.wjcpainters.co.uk

3 BRANCHES ARE BETTER THAN 1.

Stowmarket Newton Road IP14 5AE 01449 613147	Bury St Edmunds Cranfield Road IP32 7DF 01284 702562	Diss Victoria Road IP22 4GQ 01379 643531
---	---	---

TRADE & PUBLIC WELCOME
LANDSCAPING
KITCHENS
TOOL HIRE
TIMBER

ORDER ONLINE AT
JEWSON.CO.UK

JEWSON

FOOTBALL'S COMING HOME



THE
WHITE
HORSE INN

BADWELL ASH
SUFFOLK

TOMLINSON GROUND CARE



Horticultural & Garden Machinery Suppliers
Sales Service Parts Repairs Toys

Ride on mowers from £1599 inc vat

Walk behind petrol & battery mowers from £199 inc vat

Strimmers, hedge cutters, blowers, chainsaws etc



Garden tools, paddock & turf machinery



Service & repair all makes

Set in over 20 acres - Try before you buy

Established in Buxhall since 1991 - We hope to see you soon
Brettenham Road, Buxhall, Stowmarket IP14 3DL
01449 736060 www.tomlinsongroundcare.co.uk

ALIKO EGO ECHO WEIBANG



BADWELL ASH RUMBLES

FISH BAR - BURGERS - FRIED CHICKEN

TELEPHONE ORDERS WELCOME

TEL: 01359 258 258

THE STREET, BADWELL ASH IP313DH



retainerposts.com

We are pleased to help support Elmswell FC part fund the new kit.

Retainer posts supply steel retaining posts for all landscape projects; big and small. Manufactured bespoke to individual customer requirements. Nationwide delivery available.



Contact us on:
No : 07494 864231

ELMSWELL FC RESERVES' SPONSOR

ServiceMASTER Clean

Upholstery

Carpets & Rugs

Amtico+Karndean



t.01359 241577 m.07398251908

www.servicemasterclean.co.uk/west-suffolk



RESERVES EDITORIAL

December always brings its footballing trials and tribulations, even in a normal year, so we were expecting no less for 2020. Our first game, away to Kesgrave Kestrels Reserves, had two venues rained off before it was finally scheduled for Whitton Sports Centre. The pitch was decent considering and we even had some sun to match our bright start to the game. In a very seasonal fashion, we gifted Kesgrave the lead midway through the first half and our faith took a little knock. At half-time a wise man spotted a potential star and made a tactical switch which turned out to be our saviour. Man of the Match, Aidan Ashton, having been moved into midfield, started pulling the strings and stretching the opposition. He played a large part in each of our goals, with King, Cable and Carroll (x2) finishing off the chances. We missed several opportunities to make it more but after a very late Kestrels rally the game ended 2-4 to Elmswell. We were glad to see our silver foxes, Steven Reid and Chris Edmonds, back in the squad after being out injured for a couple of months.

Our next game away to Hundon Reserves in the Primary Cup was rained-off. This has now been rescheduled for the 9th of January with the winner drawn to play Brantham Athletic 'A' at home.

Our last game of the year was against a very strong Bourne Vale Reserves side who are one of the favourites for promotion. We had a couple of key players missing and then a couple more had to pull out on the morning of the game, leaving us with 3 subs and Rad Lington. We started really well and new signing Ed Hodgson scored as we controlled the early stages of the game. Bourne Vale's quality began to show more and more as their ex senior players raked cross-field balls and pinged top-bins for fun. As is their way the boys, kept their heads up and kept ploughing away, and although we created some half chances we couldn't stem the Bourne Vale tide. The game ended 1-6 and Ed Hodgson got MotM.

We end the year, after 7 games, in fifth place, and looking forward to the next two thirds of the season and hopefully a bit of a cup run. Our next home game is against Bacton 'A' on Saturday 30th Jan.

Ed - Reserve Team Manager



PARK GARAGE SERVICES
your local garage
ALL MAKES & MODELS
SERVICE & REPAIRS
01359 242 479



Farthings of Newmarket

are proud to support **Elmswell Football Club**

5c Wellington Street, Newmarket Tel: 01638 560610
17 Whiting Street, Bury St Edmunds Tel: 01284 701060
143 Milton Road, Cambridge Tel: 01223 755180
www.farthingsdrycleaners.co.uk



YOU COULD SUPPORT ELMSWELL FOOTBALL CLUB - PLACE YOUR ADVERT HERE PLEASE CONTACT SHAUN 07494 864 231



KH

Kevin Hollings KITCHEN STUDIO



Unit 14 Lodge Works, Stowmarket Road,
Old Newton, IP14 4EE
01449 257160 www.kevinhollings.com
info@kevinhollingskitchens.co.uk

TOAD TIMES

Between the end of **February** and **mid April**, toads all over the country will come out of hibernation and begin their hazardous journey back to their spawning ponds.

Common toads are declining in the UK with thousands of toads being killed on our roads every year, and they really **need our help**.

Toads usually **move after dark** when the temperature is above 6°C on damp evenings.

HOW YOU CAN HELP

We have set up patrols in **Badwell Ash** and **Stowlangtoft**. We welcome **new volunteers** for a couple of hours a week to patrol in teams of two people at any one time as part of their daily exercise and they need to keep the 2m distance unless in their bubble. Short training, insurance and answers to all your questions are provided.

If you can help us protect these animals please contact:

Sylvie Fitch: 01359 241727
bob.sylvie@btinternet.com

Lorna Mackinnon: 01359 259140
mackinnonlorna@gmail.com

froglife



LOCAL DRIVERS

We need your help too!

We put up toad signs with lights on when we are patrolling the roads.

Please take care, **slow down** and look out for our patrollers in the **Hi-Vis jackets**.



W. Jarvis & Son Tree Services & Landscapes

All aspects of tree surgery, landscaping and fencing undertaken



Fully insured, 24hr call out, council approved contractor and over 35 years in the industry

Call for a free estimate & advice T: 01359 241958 M: 07891208710 M: 07850046504
E: office@waynejarvisandson.co.uk

Visit our website for information about our company and the work we do
www.wjarvistreeservices.co.uk



City & Guilds
NPTC
Qualified workforce



NEWS FROM ELMSWILD



Grenville Clarke

A few weeks ago we heard the sad news that our friend Grenville Clarke has passed away. Grenville, as a founder member of the Green Light Trust, former chairman of the Suffolk Wildlife



Trust and a lifelong conservationist will be much missed by nature lovers and environmentalists throughout the county. Last year he was awarded both the Suffolk Medal and British Empire Medal in recognition of his hard work in the service of wildlife and communities. Through his many years of work with the Green Light Trust, he helped to establish 62 community woodlands through Suffolk and Norfolk; one of these is Lukeswood, and this is how we first got to know Grenville.

In those early days when we were looking for a suitable plot of land and wondering if we would ever get off the ground, it was easy to become disheartened and think that our aspiration of a community woodland for Elmswell would never come about, but we were kept going by Grenville's calm and cheerful good humour.

Under his mentoring we established two successful tree nurseries, took over the management of the Kiln Meadow wildlife site, and started planting trees with children from our Primary School. And before long, as he had predicted of course, we did find our ideal piece of land and Lukeswood came into being.

That was over ten years ago. Now we have both Lukeswood and Kiln Meadow and have started many other projects in the village including, just this year, the tenancy of the Poor's Land field at the end of Spong Lane where we plan to establish a wildflower meadow. That illustrates the motivational power he exerted over so many different people!

Grenville was an experienced bird ringer and had a lifelong passion for birds. This spring, as the birds are beginning to sing, you may be walking through Lukeswood listening to the robin's shrill call, admiring the melody of a blackbird or wondering at the rapturous song of the song thrush; please think of Grenville and the wonderful legacy he has left us at Lukeswood and perhaps say a quiet 'thank you'.



Donations in Grenville's memory are requested to go to the Suffolk Wildlife Trust – www.suffolkwildlifetrust.org/news/memory-wonderful-conservationist-grenville-clarke

Mary Feeney
info@elmswild.org.uk



Is your club, society or charity in need of **PRINT?**

call Jason
on 01473 652354
jason@printingforpleasure.co.uk

Printing for Pleasure Ltd
Elder House | Chattisham
Ipswich | Suffolk | IP8 3QE
www.printingforpleasure.co.uk



OPENING ALL THE RIGHT DOORS!

allhomes
town and country

Unlock your dream home this year. With our professional and personal approach, we will ensure all the right doors are open.

01359 234444 | allhomes.uk.com | mail@allhomes.uk.com

T.P. Services

UPV-c Window & Door Repairs

Sealed Units, Hinges, Locks, Handles, Letter Boxes

Over 30 years' experience, free quotations

Contact: Tom
Mob: 07957 098118
Email: tpservices65@gmail.com

Computer Help

PC, Mac, Server or Tablet support in your office or home. A rapid response from a qualified IT professional.

- laptop and desktop repairs, speed up your system
- cyber security, cloud systems, network setup
- data recovery and virus removal
- improve wifi, smart TV, phone, tablet etc
- individual tuition

Gage Computer Services (01359) 245273
www.comphelp.co.uk steve@comphelp.co.uk



Est. 2003





Weather word search!

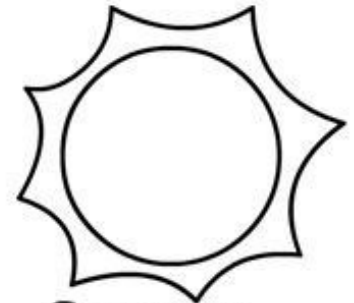
p c l f e m c r f d
 c y b m m p l a r l
 s u n n y n o i b q
 k c v l k l u n d f
 i w i n d y d y m g
 o w b e h w y y p o
 g w c k k k o d d m
 h g o h b s n o w y
 o a l v m s n r z s
 t a d v s a j k l m

Sunny
 Cloudy

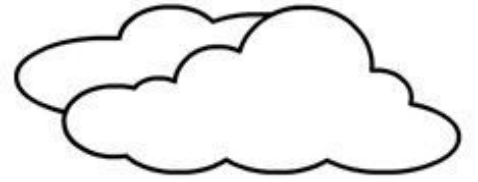
Hot
 Windy

Snowy
 Rainy
 Cold

Colour me in!



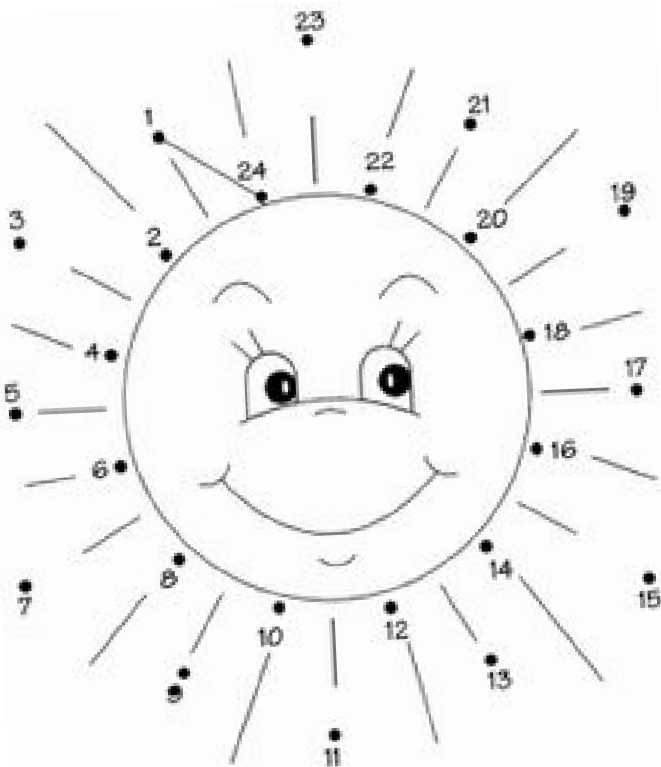
Sunny



Cloudy



Rainy



Did you know?

- About 2,000 thunderstorms rain down on Earth every minute.
- Worms wriggle up from underground when a flood is coming.

Mild autumn weather often means bigger spiders in our homes.

Sunshine
 dot to
 dot!

This page sponsored by





ELMSWELL FOX BOWLS CLUB

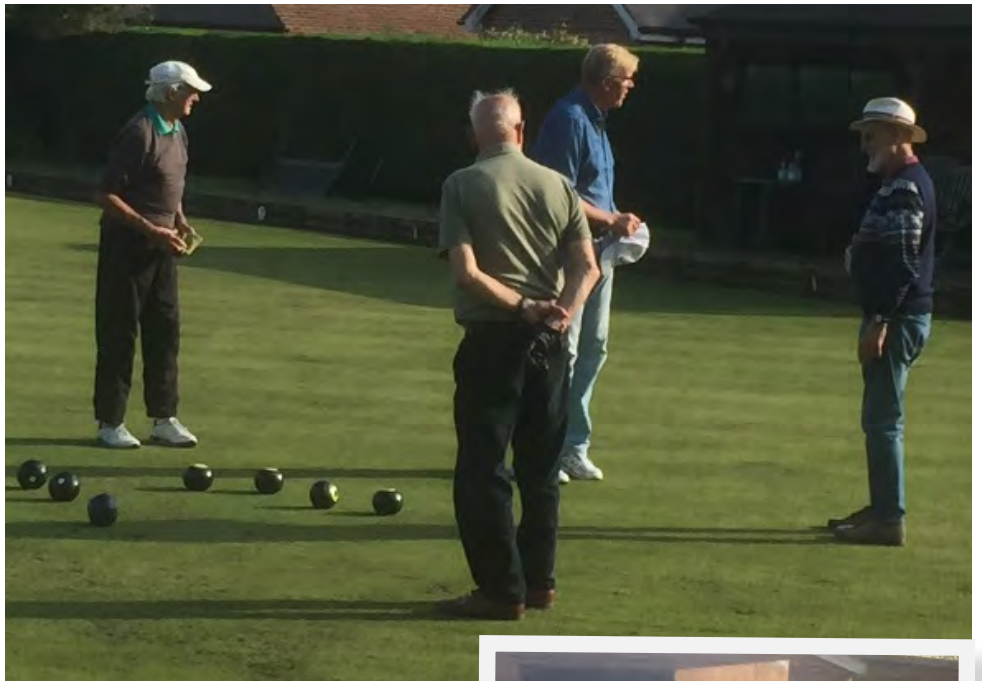
At long last I have some good news to impart. Well, about as good as it can get, anyway. The Bury League, in whose Thursday night and Monday afternoon leagues we play, has announced that it intends to run this year but with an as yet unknown format because it will depend upon the restrictions in place at the time. We have said that we will take part on the basis that anything is better than nothing, which, lets face it, is a pretty powerful argument.

The Suffolk County league, whose Tuesday evening competition we enter, has said the same and so have we! So we might get to bowl a few ends after all. Trouble is, of course, that this virus has a habit of catching us out and so we won't be sure of anything until we get there, but it does give us cause for optimism.

We have sent out a request for registration fees and the response, as last year when we could also make no promises, has been encouraging and we even have a new member, so these new houses aren't necessarily all bad!

Work continues on the green, of course, even though we could be unable to bowl a single wood and, with this recent spell of good weather, there will be a flurry of activity. Just as there was last decent spell. In between, the 'green' became a 'white' and all we could do was stand and admire it. All very pretty but a dead loss from a maintenance viewpoint.

The photos above are from the recent archives and I can't remember too much about them, to be honest.



The first shows Peter W, Dick, John Irvine and David G and the second has Barry, Dick Mark and David investigating the Sprayer when it first arrived. If we don't start playing soon I will I will have to publish photos of my cat I shall be that desperate and I don't even have a cat!



Peter Edmonds
E.F.B.C.
07860 395720

edmondspeterj@gmail.com

FOOTPATH WALKS

...a popular diversion during Covid;
the website

www.walkingengland.co.uk/suffolk
has hundreds of walks to download free of charge together with details of books and local walking groups. Local walks from 1/2 mile to 12 miles with guidance notes.

Further details from:

john@walkinengland.co.uk

PS There is no up-to-date footpath map for Elmswell and its environs.

If you feel that you could help compile one from the wealth of material available, do be in touch with the Parish Clerk
clerk@elmswell.suffolk.gov.uk



PAUL SCASE

Home Improvements

25% off
all quotes for 2021



Painting

- Using the best named paints to give you a professional finish
- Colour charts provided to give you the best choice of colours

Carpentry

- Wardrobes made to your design
- Floor to ceiling, wall to wall
- General Carpentry & DIY

Excellent Rates

Mobile: 07745 250440

07534 525 263
01449 258 254



Professional & Reliable Service



**Plumbing, Bathrooms, Heating, Boilers, Servicing,
Underfloor Heating, Tiling, New builds & Renovations**

gidneyph@outlook.com www.plumbinginsuffolk.com



Please check your hedge if it borders the pavement... remember mums with baby buggies and wheelchair users

Diagnostic Testing

M.K.AUTO'S

- Car & Light Commercial Service & Repair Specialist
- General Servicing, Maintenance and Repairs on All Makes and Models
- MOT Preparation and Repairs
- Recovery, Collection and Delivery Service

FOR A PERSONAL SERVICE AT A COMPETITIVE RATE PLEASE CALL ON

Tel: 01359 245 998
Mob: 0780 5604793

Unit 3
The Old Coach Yard - Grove Lane Ind. Est.
Elmswell IP30 9HN

NO VAT!

ALL MAJOR CREDIT CARDS ACCEPTED
Appointment Not Always Required
• CAMBELT • HEAD GASKETS

TYRES • EXHAUSTS • BATTERIES • CLUTCHES

BRAKES • WELDING • SUSPENSION • TUNING

BJW
PLUMBING & HEATING
YOUR RELIABLE LOCAL PLUMBER

Boiler Servicing
Central Heating Installation
Maintenance & Repairs
Bathroom Suites, Showers, Tiling
Install Washing Machines/Dishwashers
Burst/Leaking Pipes
Water Softeners
General Plumbing Needs

GAS Safe registered 200169

200169

BARRY WARD: 01449 616034/07734 872549

Not just a pet food shop...

We also have a large stock of pet sundries, wild bird foods, poultry feeds and coldwater and tropical fish sundries.

We also stock horse grooming equipment, frozen reptile foods, salt tablets for your water softeners and dishwashers... and much more.

Come and see our range of products today!

Mon -Fri: 9-4
Sat: 9-2
01359 242942

4 PAW Pet Foods

Station Road, Elmswell IP309HD (behind the pharmacy)

www.tcllandscapes.co.uk

The Country Life Landscapes

The Country Life Landscapes is a family run business. Locally based we are here to make your surrounding landscape is a pleasure to be in. All aspects of garden design and construction carried out to your complete satisfaction with on site free quotations given.

Our maintenance team will carry out all work in your garden, from grass cutting large/small areas to complete overall care of your outside space including pruning, hedge cutting, tree work, weeding, planting, green waste disposal, etc. Please feel free to contact us to discuss your requirements at any time.

Tel: 01359 240094
email: enquiries@tcllandscapes.co.uk

**NOW
OPEN**
★



UNDER NEW MANAGEMENT

Breakfast Menu
Hot & Cold Lunches
Sandwiches & Burgers
Children's Menu
Homemade Cakes
Hot & Cold Drinks
Crisps & Snacks
+ much more...

Special price for OAP lunches
served 12-2 everyday

Vegetarian, Vegan & Gluten Free catered for

**OPEN
EVERY DAY**
★
7am-2.30pm

**Takeaway
& Delivery
Available**



Telephone Orders Welcome
01359 244314



**JUNCTION 47A A14 · EASTBOUND
HAUGHLEY · BURY SAINT EDMUNDS · IP30 9RS**



PARISH COUNCIL MEETING REPORT - February 2021

The Government having passed emergency legislation to allow Local Government to continue within the law, local councils are currently permitted to meet 'virtually' over the internet and to properly make binding decisions. With neither Blackbourne or Wesley available for use within the prevailing lockdown restrictions the Parish Council convened using the Zoom internet video conferencing facility. The meeting was posted in the usual way, including on the Council's website, and details were clearly given as to how public attendance and contributions could be made either with a screen presence or over a telephone link if preferred.

10 Councillors attended along with 2 members of the public, District Council Ward Member Cllr Helen Geake and, for part of the meeting, SCC Ward Member Cllr Jane Storey.

This report is compiled from that meeting by the Parish Clerk and edited by the Council's Editorial Board which comprises the Council Chairman, Cllr Fred Pallett, the Council Vice-chairman, Cllr David Barker, and Cllr Mike Friend, nominated by his peers to join them. It seeks to cover some of the more interesting or significant items thought to deserve wider public attention. Included, where appropriate, are matters reported to the meetings by external bodies such as Ward Members or as raised at the meeting by members of the public. Further background and reference to subsequent events are included where relevant.

The Minutes of recent Parish Council meetings and Committee meetings, together with the agenda for the next meeting, when published, are available online at elmswell.suffolk.cloud and from the Parish Clerk by arrangement. Bound copies of older Minutes are lodged with the Suffolk County Records Office in Bury St. Edmunds. The most recent Minutes, from the meeting on 18th January, as approved at this meeting, are posted on the community notice board at the Co-op.

Planning results

The Meeting noted the following results of Planning Applications, as determined by Mid Suffolk District Council:

DC/21/00225

Discharge of Conditions 6, 9 & 17
Land to the East of Borley Crescent
APPROVED

DC/20/05053

Erection of up to 9no. dwellings
Land to the East of Oak Lane
GRANTED

DC/20/01677

Erection of up to 65 dwellings...
Land to the West of former Bacon
factory GRANTED

DC/20/05714

Erection of first floor rear extension
30 Wetherden Road GRANTED

DC/20/05686

Erection of dwelling... Kiln Farm
Guest House GRANTED

DC/20/05768

Extension... Fox & Goose Cottages
- Tostock GRANTED

Planning Applications

The Meeting discussed submissions as forwarded for comment by Mid Suffolk District

Council, the Planning Authority, and agreed to support applications ref.

DC/21/00715

Erection of detached double garage
Holly Lodge, Cross Street

DC/20/05359

Installation of windows and doors
Milford Barn, Ashfield Road

DC/21/00576

Erection of first floor rear extension
Eastwood Cottage, Ashfield Road

DC/21/00727

Erection of first floor extension over
double garage 92 Bennett Avenue

Mid Suffolk District Council

Cllrs Sarah Mansel and Helen Geake tabled a joint written report confirming that MSDC has purchased 97 homes on new housing developments in Haughley, Woolpit and Stowmarket. These new homes form some of the S106 affordable homes contributions from these new developments.

These will help to redress the loss of council houses which have been sold under the Right to Buy scheme. Work is currently underway building more council houses on both the Middle School site and the former Council office site in Needham Market. They also reported that a new awareness campaign to get Suffolk's recycling right has been launched. A leaflet explaining what can and can't go into recycling bins will be delivered to all homes, and this will be followed up with social media and press articles.

Artwork is to be put on the waste tankers. More details can be found at <https://www.babergh.gov.uk/news/new-recycling-campaign-aims-to-get-suffolks-recycling-right/>. Brown bin collections have been temporarily paused during lockdown to ensure that the Council delivers more critical services.

Meanwhile, MSDC has approved and adopted a Strategic Asset Management Plan for 2020-2025. This is a document outlining how the Council uses and manages all the land and buildings in order to support the strategic priorities. The

main objectives include generation of income, asset management and development of long term housing procurement. This plan covers the Council assets, not those of the CIFCO investment vehicle.

Other matters in the Report included, from the Council's half yearly Treasury Management Report, the fact that MSDC's overall debt reduced by £6.5M due to some repayments being made on PWVB loans and other short-term loans. CIFCO has recently invested £5.7M in a Basingstoke business centre. Also that Council Officers are working with Woolpit Health Centre and David Wilson Homes to create space for a temporary carpark to enable Woolpit Health Centre to deliver vaccines more efficiently.

Suffolk County Council

County Council Ward Member, Cllr Jane Storey, tabled a written report which confirmed that Suffolk County Council has announced it will use the installation of Automatic Number Plate Recognition (ANPR) cameras alongside an automatic entry system at its recycling centres to improve customer experience and plan for future demand. A booking system was introduced at Suffolk's recycling centres in May 2020 when sites reopened following closure at the start of the first Covid-19 lockdown and saw 14,000 visits per week during the summer. This can rise up to 27,000 per week in normal times, without current social distancing rules. The project aims to improve the efficiency at

the recycling centres by linking the online booking system with automatic number plate recognition (ANPR) technology and automated entry barriers. The Council is now looking to use the technology to further improve the current booking system for residents wishing to visit the centres and make the most of the technological opportunities. The cameras give an accurate count of vehicle numbers and also record how much time each vehicle is on site. This will allow Suffolk County Council to maximise site availability and to develop new and existing sites to better meet the needs of the increasing population of Suffolk. Data from the system could also assist in identifying rogue traders fraudulently using the free household waste service to dispose of trade waste. The system also has the facility to link to the DVLA database and identify the type of vehicle and registered keeper details if necessary.

Haughley Park

Development Proposals

The Clerk reported on his attendance on 26th January of the first day of a 10-day on-line Appeal hearing against the refusal for outline Planning Permission for 120 dwellings at Haughley Park ref. DC/19/02605 to reinforce Elmswell Parish Council's objection with specific emphasis on the highways issues consequent upon the proposal's reliance on Elmswell for local services and the inevitable over-use of Warren Lane. The Inspector agreed to include Warren Lane and the route into Elmswell in a forthcoming site visit which would inform his decision which I would expect will not be known until April/ May.

Development at School Road

The Clerk attended on 20th January the meeting of Mid Suffolk Development Control Committee re the Application ref. DC/18/02146 for Permission in Outline for up to 86 dwellings on land to the north and west of School Road. His Report stated that it was clear, however the situation may appear to residents battered by the recent storm of similar applications in Elmswell, as in neighbouring villages, there was just 1 point of valid objection in face of the

overarching licence to develop within the Government's National Planning Policy Framework. This is the School Road / Church Road junction, currently close to safe capacity. Permission was granted but with the very unusual and extremely important caveat that no development on the site can begin unless and until the proposed remediation measures at this junction - extensive widening and re-shaping - have been built-out and have passed the formal Stage 3 GG119 Highway Safety Audit which will include input from MSDC.

Allotments

The Meeting noted the formation of an allotment liaison group which has asked to be consulted on any changes which might be contemplated to the rules relating to maintenance and cultivation of plots together with any possible uplift in fees charged to better reflect the costs involved and in light of the pressure from residents on the waiting list who see what they consider to be poor practice in some instances. Cllrs Burch & Hancock are part of the user group and will, with the Chairman, be part of any further discussion.

Railway Tavern site funding

The Meeting agreed that, as recommended by advisors, £3,000.00 be made available to the village's emerging Community Benefit Society towards taking further the aim of refurbishing the Railway Tavern as a community pub and, similarly, that funding of £2,000 be made available to the Elmswell Community Land Trust to take further the aim of providing affordable homes on the Railway Tavern site. This followed discussion informed by a paper making the following points:

1. As required by the DCLG Local Government Funding Policy Team, in 2019 Council sought evidence of public support for the Precept increase required to service the proposed loan from the Public Works Loan Board towards the purchase of the Greene King development site on School Road.
2. Support was forthcoming, Loan Sanction was granted and the site purchased.
3. The appeal to residents was

outlined in the pamphlet delivered to all households which sketched-out the approach to 2 projects on the site:

- 3.1 The establishment of a Community Land Trust (CLT) so that the village can, 'take control of its own social housing';
- 3.2 Tapping the considerable potential to revive the pub's fortunes, thus, 'saving the Railway Tavern as a community facility'.
4. Both projects can follow well tried and tested routes by virtue of (a) the establishment of Elmswell CLT to take forward the housing scheme, and of (b) setting up a Community Benefit Society (CBS) to refurbish and update the pub and take advantage of the ever-expanding population in and around Elmswell.
5. Debbie Wildridge of Locality, the national membership network support organisation for local communities, addressed a community consultation meeting at Blackbourne and has continued to advise towards the establishment of the Elmswell CLT. This is registered with a skeleton steering group and now needs to attract village-wide membership - in light of the experience of other local communities this should be several hundred strong. Once established, ECLT will be independent of the Parish Council. Matters of tenure, rent, 'affordability', etc will be a matter for the Trustees - ie the wider village membership. One immutable factor, as promised in the community consultation, is that there will be no, 'right to buy'.
6. The route taken by the many local and nationwide community pub groups has been to become members of the Plunkett Foundation established in 1919 to promote increasing awareness of the potential of community-ownership in rural areas and making it easier for rural communities to take action. Again, a skeleton group has secured Plunkett membership and has successfully bid for 2½ days of professional advice together with £600.00 grant aid towards the very first stages of professional design / architectural input. As with the CLT, once established, 'Elmswell Community Enterprise', (a CBS)



will be independent of the Parish Council and will comprise any and all residents interested in taking the project further.

7. Both of these initiatives are 'chicken and egg' ventures...they can't act until established and they can't be established until someone acts. It is common for the necessary kick-start to come from the local parish council or similar community group.

8. Advice clearly suggests that the initial establishment process requires the setting up of membership websites linked with social media outlets plus local advertising in respect of both schemes. Once funding for these and other initial moves is secured, the bodies would be self-supporting.

9. Clearly, EPC remains owners of the site and has absolute control over the tenure as either or both of these initiatives develop or otherwise.

10. The progress of both projects

relies entirely on wide community support and involvement. There is ample evidence, both locally and nationwide, that such community ventures can be very successful both in themselves and in the ripple-effect of community awareness and energy that they create.

Footpath to the cemetery & allotments / Ashfield Road pavement

The Clerk reported on requests that Council might consider the possibility of upgrading the footpath through Lukeswood from Church Road down to the cemetery and on the possibility of the installation of pavement all the way up Ashfield Road to Grove Lane in light of the increased pedestrian traffic from recent developments, often predicated on the possibility of the village facilities being easily reached on foot. The meeting agreed that both initiatives should be explored, including discussion with the Elmswold Group who manage Lukeswood.

Next Meeting

The next Ordinary Meeting is scheduled to take place on Monday 15th March at 7.30pm in the Chamberlayne Hall at Blackbourne or on-line should prevailing restrictions so require. If held live, the proceedings will also be open, through Zoom on-line conferencing, to all who notify the Clerk of their wish to be included. The notice of meeting on notice boards and on the Council's website, will include full details as to how to register to join.

The public are, as ever, welcome to attend all Council and Council Committee meetings and the agenda will always offer opportunities for questions and comment. Agendas are published on-line at www.elmswell.suffolk.gov.uk, cloud, and on the Council's notice board at Crown Mill.



LAND AT BLACKBOURNE

Parish Councillors Dick Burch and Fred Pallett were on site at Blackbourne with brothers Stan and Ian Turner, who have gifted 6 acres of land adjacent to Blackbourne Meadow to help accommodate the growing pressures on the facilities there. The gift is the fulfillment of a promise made some 24 years ago when S&I Turner undertook to add to the 11 acres which had come to the village as part of the Planning permission for the development at Street Farm which became the Blackbourne Road estate. The picture shows them at a marker post which defines the new boundary running along the northern and western edges of the site.



Future Council Meetings

Notice of all meetings and agendas is posted on the Council's notice board at Crown Mill and in the community notice board at the Co-op.

Mar	Apr	May	June	July
15th	19th	17th	21st	19th

Meetings are held at Blackbourne, beginning at 7.30 unless otherwise notified

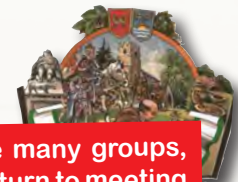
Enquiries on any Parish Council matter are invited to the Clerk, Peter Dow, at The Council Office, Blackbourne, Blackbourne Road, IP30 9UH – right next to the car park and with wheelchair access.

Staffed Mondays – Thursdays 9.00am – 12.00 noon and at other times by arrangement

clerk@elmswell.suffolk.gov.uk
Tel. 244134

THIS PAGE IS PUBLISHED AND FUNDED BY ELMSWELL PARISH COUNCIL

What's On in Elmswell ?



As soon as tier 4 or any other restrictions allow, Blackbourne will be available to the many groups, organisations and activities represented here as and when they feel comfortable with a return to meeting and within the rules which will govern how the facility is used in light of Government and other advice.

We copy here the programme of events and bookings as originally planned, but, clearly, it will be down to individual organisers to keep members informed as to when their particular meeting or activity resumes.

All of the established booking slots will be honoured, as long as there is space within the usual venue to follow guidelines. We will help wherever possible by offering a larger space if necessary and available and letting fees will not be increased if this has to be the case.

ORGANISERS – if you have news of when you might consider re-starting, do let the Newsletter know and we can spread the word.

March 2021

3 Elmswell Exchange Afternoon WI 2 pm
The Art & Craft of Stained Glass -
Michele Russell

11 Elmswell History Group meeting, 7.30pm;
Venue and speaker to be confirmed.

April 2021

7 Elmswell Exchange Afternoon WI 2 pm
Making the Best of a Supermarket Bunch
Stephanie Lester

8 Elmswell History Group's 21st Anniversary
meeting, 7.30pm; Venue and speaker to be
confirmed.

May 2021

5 Elmswell Exchange Afternoon WI 2 pm
Annual General Meeting

13 Elmswell History Group meeting, 7.30pm;
Venue and speaker to be confirmed. *July
tickets on sale*

June 2021

2 Elmswell Exchange Afternoon WI 2 pm
The Work of a Parish Nurse - Lesley Williams

10 Elmswell History Group meeting, 7.30pm;
Venue and speaker to be confirmed. *July
tickets on sale*

July 2021

7 Elmswell Exchange Afternoon WI 2 pm
How To Look Good in a Bin Bag ! - Mandy
Wild

8 Elmswell History Group Annual Outing –
to be confirmed Details and Tickets from
01359-242601

August 2021

4 Elmswell Exchange Afternoon WI 2 pm
Edith Cavell - A British Heroine -
Richard and Jill Mann

September 2021

1 Elmswell Exchange Afternoon WI 2 pm
Never Judge a Book by it's Cover
The ancient skill of bookbinding
Michael Holton

October 2021

6 Elmswell Exchange Afternoon WI 2 pm
Chile - the long thin country - Chris Parfitt

November 2021

3 Elmswell Exchange Afternoon WI 2 pm
Create your own special bookmark for
Christmas
Materials provided - Jane Knights

December 2021

1 Elmswell Exchange Afternoon WI 2 pm
It's Christmas - Let's Celebrate !



STOP PRESS

Blackbourne and Wesley have bounced back before and will do so again - these are the activities that have told us they are ready to be up and running as soon as they are permitted to operate:

Sarah's classes - stretch and flex /spin /boxercise
/legs bums and tums/ bodyblast...
details at sarahjane_fitness@outlook.com

Karate with Lewis
– find details at info@greatheadma.com

Slimming World – Tuesday mornings –
Jen.sw19@yahoo.com

Slimming World – Tuesday evening

Ju jitsu – Monday & Wednesday evenings –
tel. Gary on 07711 680262

Rainbows - Monday evenings –
elmswellrainbows@yahoo.com

NHS

FREE COVID TESTING AT BLACKBOURNE

Monday	7am – 1.30pm
Tuesday	7am – 1.30pm
Wednesday	7am – 1.30pm
Thursday	12.30pm – 7pm
Friday	7am – 1.30pm

Your Newsletter Fact File

For the next 6 months we need copy by: March 23rd, April 27th, May 25th, June 22nd, July 27th.

Contact us on 01359 244 134 for all Amenities Association business, Newsletter and adverts.

Our new email address is EAA@elmswell.org.uk Your editors: Jean Barker, Maggie Bushell, Peter Dow

Published on the first Friday of every month by the Elmswell Amenities Association

Reg. Charity No. 304879. 1,906 copies delivered free to households and to businesses in the community. A volunteer enterprise entirely supported by advertising.

PLEASE SUPPORT OUR ADVERTISERS



VILLAGE INDEX



Useful contacts for community groups & others...feedback is essential.

Do be in touch to correct or add details or to suggest someone else deserving of listing.

Amenities Association	Jean Barker (Sec)	eea@elmswell.org.uk	241135
Art Club	John Welford	welford955@btinternet.com	240166
Baby & Toddler Group	Donna Hughes	elmswellbtgroup@gmail.com	
Baptists	Dave Hollings	davehollings@btinternet.com	241323
Beavers	Ruth Court	ruthcourt4@hotmail.co.uk	
BWMA	Peter Edmonds (Sec)	edmondspeterj@gmail.com	241640
BATS – Badminton at Blackbourne	Peter Edmonds	edmondspeterj@gmail.com	241640
Blackbourne – all enquiries	Parish Council office	clerk@elmswell.suffolk.gov.uk	244134
Brownies	Gemma Sutton	elmswellbrownies@hotmail.com	
CAB		advice@midsuffolkcab.org.uk	01449 676060
Carpet Bowls Club	Frank Boxall	jf.boxall@btinternet.com	
Christians Together in Elmswell	Jean Folkard	derekrf2@gmail.com	
Community Speed Watch	Marie Spampinato	mariespampinato@hotmail.co.uk	07769 715209
Companions	Linda Waspe	linda@labbott.plus.com	
County Councillor	CLlr Jane Storey	Jane.Storey@suffolk.gov.uk	240555
Cricket Club	Eileen Brooks (Sec.)	elmswellcricketclub@gmail.com	
Cubs	Ben Savill	hovells23@hotmail.co.uk	
District Councillor	Sarah Mansell	Sarah.Mansell@midsuffolk.gov.uk	07860 829517
District Councillor	Helen Geake	Helen.geake@midsuffolk.gov.uk	
Elmswheelians	Trevor Sadler	trevor.sadler@dsl.pipex.com	240908
Elmswild	Mary Feeney	info@elmswild.org.uk	241901
Exchange afternoon WI	Maureen Davis	modavis6@gmail.com	
Exchange Club	Carol Blissett	carolblissett@hotmail.co.uk	
Fire Crew; non-emergencies	Brian Hawes	brian.hawes@suffolk.gov.uk	07761 125093
First Responders	Merv	merv.smith@tiscali.co.uk	07909 006 496
Football	Shaun Pratt	shaun.pratt@btinternet.com	07494 864 231
Fox Bowls Team bowls at Blackbourne	Dick Burch	ann.richards47@gmail.com	240105
Friends of St Johns	Jean Folkard	derekrf2@gmail.com	242099
Gardening Club	Nick Chamberlin	npch@btinternet.com	242601
Guides	Gemma Sutton	gem_2910@hotmail.co.uk	
Health Centre - Woolpit			240298
History Group	Stella Chamberlin	stellachamberlin@yahoo.co.uk	
Library	Miles Row - Manager	Elmswell.Library@suffolklibraries.co.uk	240974
Little Elms	Melanie Garner	info@littleelms.co.uk	240491
Newsletter	Editorial office	eea@elmswell.org.uk	244134
Oil buying Group		elmswelloil@gmail.com	07813829008
Over 55's Club	Diann Armstrong	Mayfield, Wetherden Road	241002
Parish Council	Parish Clerk	clerk@elmswell.suffolk.gov.uk	244134
Police Emergencies			999
Police; non-emergencies	Mid Suffolk South SNT	headquarters@suffolk.pnn.police.uk	101
Poor's Land Charity	Peter Goodridge	elmswellrector@gmail.com	240512
Power cuts		Powwercut105.com	105
Rainbows	Marion Abbott	elmswellrainbows@yahoo.com	
School	Mrs Ash	admin@elmswell.suffolk.sch.uk	240261
Scouts	Paula Hollings	ddc.paula@stowmarketscouts.org.uk	07828 562485
St John's Church	Peter Goodridge	elmswellrector@gmail.com	240512
Sewing Bee	Isabel Burgess	isabel.burgess@live.com	
Village Tree Warden	John Ibbetson	jayeye130@gmail.com	241086
Wesley – all enquiries	Parish Council office	clerk@elmswell.suffolk.gov.uk	244134
WI - evening	Margaret Stevens	stevensmarg@tiscali.co.uk	408452
Youth Football	Chris Smyth	smyth98@hotmail.com	07717 841 591

Enquiries on any Parish Council matter are invited to the Clerk, Peter Dow, at The Council Office, Blackbourne, Blackbourne Road, IP30 9UH – right next to the car park and with wheelchair access. Staffed Mondays & Wednesdays 9.00am – 4pm, Tuesday & Thursday 9.00am – 12 noon and at other times by arrangement. clerk@elmswell.suffolk.gov.uk Tel. 244134

**IF YOU ARE NOT HAPPY THAT YOUR DETAILS APPEAR HERE,
PLEASE DO BE IN TOUCH VIA eea @elmswell.org.uk**

KEY BATTERY REPLACEMENT - STARTER MOTORS - SPARK PLUGS - ELECTRICAL FAULTS - AIR BAG FAULTS - ENGINE MANAGEMENT LIGHTS - TPMS RESET



They can even MOT, Service,
and Repair me.....

PROMECH



MOT CENTRE



MINOR REPAIRS



SERVICING



MAJOR REPAIRS



BRAKES



CLUTCHES



TIMING BELTS



DIAGNOSTICS



TIMING CHAINS



BATTERIES



WHEEL ALIGNMENT



WINTER CHECKS



TYRES & EXHAUSTS



AD BLUE TOP UPS



PUNCTURES REPAIR



COURTESY CAR



01359 242420



Find us at: Station Road Industrial Estate, Elmswell, IP30 9HR



BULBS - ALTERNATORS - SHOCK ABSORBERS - COIL SPRINGS - WHEEL ALIGNMENT - REPAIRS - MOT PREP - WHEEL BALANCING - PUNCTURE REPAIRS