

'Like a friend dropping in'



# The Elmswell Newsletter



More than thirty years of Parish Record... all the Community News...

APRIL 2023

On line at [elmswell.suffolk.cloud](http://elmswell.suffolk.cloud)

## Wesley - busy bunnies prepare for Easter



### NOT JUST A PUB

*Tavern Share Issue closes 21st April*

*... see pages 7 & 8*

Published on the first Friday of every month by the Elmswell Amenities Association Reg. Charity No. 304879.  
2250+ copies delivered free to households and to businesses in the community. A volunteer enterprise entirely supported by advertising.

PLEASE SUPPORT OUR ADVERTISERS

[EAA@elmswell.org.uk](mailto:EAA@elmswell.org.uk)



**Our editorial is designed to inform and to encourage debate. If you wish to comment, please do so via the office or by email at; eaa.elmswell.org.uk We reserve the right to edit any such contributions that we may use in a subsequent edition.**

## THERE'S TALK OF ELECTIONS

**This opening phrase is in the, 'How to stop people reading any further', top ten. Not quite the switch-off capacity of, 'Harry & Megan hints for Home & Happiness', or 'The Donald Trump path to mental tranquillity'. Nevertheless, guaranteed, according to InterWeb researches, to leave just 7% of our readers eager to tackle the next bit.**

Entirely understandable. Just across Hadrian's wall we see, 'election', - a reshuffle on the decks of the national assembly at the whim of a small proportion of the population who happen to belong to the political group who are currently in the majority resulting, by a Brexit-lite whisker, in a change of leadership and a swirl of bagpipes and Scotch mist. Which should not leave us south of the border in any way complacent. We have very recent memories of the few months of Westminster musical chairs when the grown-ups seemed to have left the party, if, indeed, party it was.

**But, as things settle, we are encouraged to begin to generate enthusiasm for some serious electioneering in late 2024 / early 2025 following, the excitement mounts, some re-drawn constituency boundaries.**

But hang on. Hold you hard! Surely there's a local election due? A couple of councils...we've had polling cards and a bit in the Newsletter last month about taking photo ID. Plus a leaflet from someone or other - probably the Greens...it usually is.

No need to Google it. All is, herewith, revealed for the seven-percenters who are still with us.

On May 4th we are invited to vote for 2 Councillors to represent Elmswell & Woolpit on Mid Suffolk and for up to 11 members to sit as Elmswell Parish Council. Both Wesley and Blackbourne are open for polling from 7am to 10pm. A polling card will go to all residents telling them which one to go to depending on whether they live north or south of the railway line. And, yes, for the first time, voters will need to show photo identification - their passport, driving licence, bus pass etc to prove they are who they claim to be. Postal votes are available from Mid Suffolk before 18th April and no photo ID is needed if you vote by post.

This is where you might need Google - or an AI chatbot, a priest, personal counsellor or life coach. For you ask, "What do these people do and why should I bother encourage them to do it?" Do read on:



Our District Council comprises 34 Members and for the past 4 years has been, effectively, 7 effectively, 'hung', with a political split meaning that many decisions have been decided by the casting vote of a Chairman. One more seat either way could change the politics considerably, with real implications for such as Planning permissions. A significant factor for Elmswell is the enforced reconsideration, following considerable pressure from the village, of the attempt

to plonk 50 more houses at School Road where the village has suggested we might have a new school so that our kids don't have to be bussed to Woolpit every day. Right opposite this site, there is the recent emergence of a landowner's bid to develop within the setting of St John's on the open, rolling rural approach to the village. Either issue could re-shape Elmswell for ever. The 2 people we elect on May 4th will have a significant say in this sort of thing. Worth a cross in a box?



At the base of the triangle of government sit our town and parish councils.

These worthy bodies are made up of residents who live in the community. They are generally non-political, generally

claim no expense or allowances and put up with extraordinary amounts of apathy and low-level abuse from those whose experience of the workings of a parish council is based on the whacky-but-loveable Dibley crew or Tik Tok outtakes of Jackie Weaver at a Handforth Parish Council meeting. Elmswell has had its Handforth moments, but, for most of this century, has become a prime example of what a community can achieve when represented by a sound body of volunteers with relevant experience, imagination, commitment, drive - and a thick skin. Your March Newsletter invited contributions from potential parish councillors so that the choices made at the ballot box can be better informed. These we print on the

back pages. At the time of writing, the all-important, 'Notice of Persons Nominated', has not been published, so we cannot say whether those who chose to submit a personal profile are all there is to choose from.

Elmswell is now the largest village in Mid Suffolk. The pressures of development are not going to stop. The regulation of that development through Plan-led strategies will remain weak for as long as, it has been suggested, central government is in the hands of the urban elite graduate class whilst we, the rural hinterlanders, remain a significant unrecognised minority. We have to continue to fight our corner with little help or encouragement as we have done so successfully with ventures such as Wesley, such as at the ever-expanding Blackbourne, such as the emerging community affordables and community pub proposals on the Greene King site. We have to innovate and consider new initiatives, as already voiced by our current parish councillors, such as community electricity from a turbine on the new land at Blackbourne or an electric taxi mini-bus service. Pie in the sky? So was Blackbourne before we actually did it!

Our recent track record is good. It is worth considering helping maintain this momentum for at least another 4 years by assessing the skills and commitment on offer - and then by voting for individuals who seem best suited to continuing what seems to be a successful trajectory.

All it takes is few X's.



**VOTE ELMSWELL**



## ELMSWELL ART CLUB

Later this month, we are planning a club outing to Christchurch Mansion, situated in the grounds of the beautiful Christchurch Park in Ipswich, to visit their "Landscape Rebels" art exhibition.

'Landscape Rebels' will explore how human impacts, including the climate crisis, are changing the landscape and how landscape has been depicted by artists, makers and people from Suffolk to across the world. The exhibition brings together artworks by Turner, Constable and Monet, alongside natural history, costume, and global stories showing a variety of creative responses to the landscape.

Landscape Rebels features JMW Turner's painting of 'Walton Bridges', widely regarded as the first oil painting by the artist to have been based on oil sketches made in the open air. Colchester and Ipswich Museums were instrumental in a bid to help save this important painting for the nation when, in 2019, a rescue bid was launched with Norfolk Museum Service. With the aid of major grants from the National Lottery Heritage Fund, Art Fund, the Friends of Ipswich Museums and a private donor, this nationally important painting was successfully saved for the East of England and the nation. Further support from the Friends of the Ipswich Museums is enabling this stunning artwork to be brought to Christchurch Mansion. Turner was 31 when he painted this in 1806.



It was sold at auction in 2018 to an overseas buyer, but was then subject to an export stop; subsequently it was acquired in 2019, with substantial help from both the National Lottery Heritage Fund and Art Fund and will now take its place in the collection of Norwich Castle Museum & Art Gallery. Until this acquisition was made, there was no Turner oil painting in a public collection in Norfolk, Suffolk or Essex. The Norwich Castle Museum has a strong collection of works by the Norwich School who were influenced by Turner.

Our featured member's picture this month is a very interesting depiction of Aboriginal (Indigenous Australian) Art and is by Pam Riches.

Pam produced this "dot" art image using acrylic paint on board and explains the background to this particular piece of Aboriginal culture as follows;

"SNAKES are indigenous to all parts of

Australia and feature strongly in creation stories held by Aboriginal people (now known as Indigenous Australians or First Nation People) and in their paintings of strength, creativity and continuity.



DOLPHINS, representing life cycles, are seen as guides and protectors as a continuation of life, celebration and joyfulness."



**ELMSWELL ART CLUB MEETS EVERY TUESDAY FROM 09:00 TO 12:00 AT THE WESLEY AND NEW MEMBERS ARE ALWAYS WELCOME.**

*Eddie Douglas*



**WESLEY**

*Coffee Shop...*

*where you are warm and welcome*

**Weekdays 9.00 – 4.00,  
Saturdays 9.30 – 4.00**

# ROOFLINE+PLUS

**Look Up!** BUILDING & ROOFING CONTRACTOR

EST 1985

**ROOFING & ROOFING REPAIRS**

**CHIMNEYS REBUILT,  
REPAIRED, REPOINTED  
OR REMOVED**

ALL WORK GUARANTEED & FULLY INSURED

**CALL US (WE ALWAYS RETURN CALLS):**

Email: [rooflineplus2@gmail.com](mailto:rooflineplus2@gmail.com)

**GUTTERING / FASCIAS / FLAT ROOFING**

**ROOF WINDOWS INSTALLED**

**FREE NO OBLIGATION QUOTE**

01449 763218  
07500 823292

# ELMSWELL & Maintenance Services ELECTRICAL

For all your Electrical jobs big or small call  
Grant on 07597385744 or  
email [elmswellems@gmail.com](mailto:elmswellems@gmail.com)



WHAT WE OFFER

YOUR LOCAL,  
FRIENDLY,  
FAMILY VET

Haughley  
VETERINARY CENTRES  
Thurston

- Operating theatre
- Dentistry
- In-house laboratory
- X-ray, ultrasonography, ECG & endoscopy
- Pet Health Club
- FREE Parking



**HAUGHLEY VET CENTRE** 63 Old Street  
Stowmarket  
IP14 3NT  
01449 673366

**THURSTON VET CENTRE** 58 Barton Road  
Bury St Edmunds  
IP31 3PD  
01359 232200

[haughleythurstonvets.co.uk](http://haughleythurstonvets.co.uk)

Find us on



Scan the QR code or visit  
[haughleythurstonvets.co.uk/book-an-appointment](http://haughleythurstonvets.co.uk/book-an-appointment)  
to book an appointment today.

# KH

Kevin Hollings  
KITCHEN STUDIO



Unit 14 Lodge Works, Stowmarket Road,  
Old Newton, IP14 4EE  
01449 257160 [www.kevinhollings.com](http://www.kevinhollings.com)  
[info@kevinhollingskitchens.co.uk](mailto:info@kevinhollingskitchens.co.uk)

- House completions
- Will writing
- Family matters
- Business legal advice

“It’s business as usual...

We may be working slightly differently  
but we’ve never been closer to our clients”



Burnett Barker  
Solicitors

Call 01284 701131  
or visit [www.burnettbarker.co.uk](http://www.burnettbarker.co.uk)



## ELMSWELL EXCHANGE AFTERNOON W.I.



Our March meeting was very well attended. Our planned speaker was unable to join us as there had been a death in her family. We will now hear about Dolls Houses and Miniatures later in the year. Instead, in complete contrast, we enjoyed a presentation about Gallows, Gangsters and Good Time Girls. Our speaker, Peter Lawrence, is a retired police officer who was seconded to the Royalty & Diplomatic Protection Unit at Scotland Yard. Something many of us had never heard of. He had a long and interesting career and is an excellent historian. We journeyed through stories of London's seamier side with characters like the Kray's (they loved Suffolk didn't they!) and the big time crooks of the day. See photo. He covered Crippen and Ruth Ellis. I can actually remember her case as a child. My mother talked about this

a lot. She was the last female to ever be hanged for her crime. He also covered the Profumo affair. We watched archive footage on screen that really added impetus to his stories. It was a highly entertaining and interesting afternoon. The ladies have asked that he returns next year with another of his presentations.

After refreshments Mary went through the business matters. Sadly she had two deaths to announce. Connie Tapper and Yvonne Way, two valued members. It hasn't really been a good 12 months for us in this respect.

The winners of our competition this month were :- 1st Jayne 2nd. Margaret and 3rd Jane Woods. Next month we welcome Faye Jones. She will sit on her Wood Shaving Horse and carve a Welsh Love Spoon for us. Then we can all go home and make our own!!!! Wood shavings will be free!!

Anyone interested in joining us get in touch. Mary on 245022 or Carol on 2428 84. *Maureen Davis*



## ELMSWELL WI

At our March meeting we enjoyed a very interesting and eye opening talk from Cheryl Bright on the making of artisan chocolate.

She began 18 years ago when her daughter booked a trip to Peru. To raise money for the trip Cheryl began making chocolate truffles to sell and this was so successful she moved on to making artisan chocolate.

Chocolate was first made by the Aztecs and Mayans in Mexico as a drink. It was also used as currency as it was so valuable. The cocoa pods grow in many countries around the equator and are harvested twice a year by hand when the pods are opened, the fruit inside emptied out and laid out in the sun to dry. They are then roasted and winnowed.

There is quite a complicated chemical reaction taking place. The resulting chocolate is melted at 45 - 50 degrees which melts out the butter molecules. Our standard british chocolates like Cadbury and Galaxy have added sugar and fat to increase their shelf life. Artisan chocolate does not have these additives so is much better for our health.

Any chocolate containing 75% or over of pure chocolate solids is very good for lowering blood pressure and 90% is beneficial to the digestive system as well. So good news, we don't need to feel guilty about eating chocolate! (artisan chocolate that is).

Cheryl handed round chocolates which she had made while she was talking and these were delicious and went down very well as you can imagine! We held our usual raffle and gave out birthday plants to members whose birthday is in March.

Our next meeting will be on 11th April when the speaker will be Martyn Roper on the history of cartoons.

Visitors are always welcome so come along and see what we are about. We are a friendly bunch and meet at 7.30pm on the second Tuesday of the month at the Wesley Chapel.

*Margaret 01359 408452*

## OVER 55's CLUB

Just to keep you all informed of what is happening at the club since our last report we have had the AGM when the yearly reports were given by the Chairman and the treasurer outlining what has been booked for the next year which includes some new names coming along to entertain for us along with some well liked names returning again.

Regretfully it has been necessary to increase the annual membership fee to £25 and also to increase the charge for entertainment as well, non members will still be welcome at open evenings a charge of £5 will be payable at the door you will still get a free cuppa and biscuits in the price.

Following on it was time to elect the committee for the next year. The chairman was unanimously re-elected for a further year along with the existing committee who were all willing to continue with Diann at the helm.

It was good to see some new faces coming along to join us and paying their subscriptions.

At the close of the AGM we welcomed the return of the Old Codgers providing well known music from their Accordions.

Our first meeting on April 13th will feature cash bingo when we will be finalising details for our forthcoming outing on May 25th to the Wherry at Oulton Broad for a carvery lunch followed by a Waveney river cruise.

*Grant 240943*





**Not just a pet food shop...**

We also have a large stock of pet sundries, wild bird foods, poultry feeds and coldwater and tropical fish sundries.

We also stock horse grooming equipment, frozen reptile foods, salt tablets for your water softeners and dishwashers... and much more.

**4 S  
P A W  
Pet Foods**

Mon -Fri: 9-4  
Sat: 9-2  
01359 242942

Station Road, Elmswell IP309HD (behind the pharmacy)

Come and see our range of products today!

**DAVID MARTIN**  
MOTOR VEHICLE ENGINEERS & CAR SALES

Station Hill, Thurston, Bury St Edmunds IP31 3QU  
www.davidmartinmotorengineer.co.uk  
info@davidmartinmotorengineer.co.uk  
Open Monday - Friday 8am - 5pm  
Tel: 01359 230536 Mob: 07808 508864

Local, honest, friendly, reliable family run business offering car and light commercial vehicle repairs at competitive prices

<p><b>MOTs</b> Class 4, 5 (minibus) &amp; 7 (up to 3,500kg) <b>**including free retest**</b></p>	<p><b>SERVICING</b> on all makes &amp; models <b>**including vehicles under main dealer warranty**</b></p>
<p>Brake overhauls Cam belts Bodywork 4 wheel alignment</p>	<p>Vehicle recoveries Welding Exhausts Batteries</p>
<p>We offer a <b>FREE</b> collection / delivery service from your home or workplace (within the local area)</p> <p>Courtesy car available (subject to availability)</p>	<p><b>Tyres supplied &amp; fitted</b> at competitive prices (available same day when ordered before 12pm)</p> <p>Air con. re-gas &amp; repair R134a &amp; R1234yf (estimates available on request)</p>

We are proud to be members of the Good Garage Scheme, check our feedback @ [www.goodgaragescheme.com](http://www.goodgaragescheme.com)  
NO WORK IS CARRIED OUT WITHOUT FULL CONSENT FROM THE CUSTOMER



**W. Jarvis & Son**  
**Tree Services & Landscapes**

City & Guilds NPTC, Facebook, Instagram, YouTube icons

Scan me! 

			
--	---	--	---

**All aspects of tree surgery, landscaping and fencing undertaken.**

Fully insured, 24hr callout, council approved contractor with over 40 years in the industry.

Call for a free estimate & advice  
T: 01359 241958  
M: 07891 208710 • 07850 046504

Visit our website for information about our company and the work we do  
[www.wjarvistreeservices.co.uk](http://www.wjarvistreeservices.co.uk)



*Enjoy a Warm Welcome at WESLEY*

*Now serving light lunches*

# CLUBS & SOCIETIES

## ELMSWELL GARDEN CLUB

Monday, 20th March 2023 marked the first day of spring, when 12 hours of daylight and 12 hours of darkness were documented. The days are getting longer, a sure sign for gardeners to begin to sow and plant in earnest. Soon we will be sitting in our gardens enjoying the evening sun.

It was a pleasure to welcome Ruth and Paul Goudy to the Garden Club on Tuesday 21st March. Ruth and Paul Goudy have built Kiln Nursery at Kesgrave over the last twenty years together. Ruth enjoys writing regular features in local magazines and newspapers and is a gardening expert on Radio Suffolk. She loves to share her passion for plants, especially flowers, wildflowers, and associated folklore. On Tuesday evening she passionately took members upon a 'gentle stroll' through her thoughts. [www.ruthgoudy.com](http://www.ruthgoudy.com)

**The committee look forward to meeting you on Tuesday, April 18th at The Wesley Hall, School Road. Should you need further information about Elmswell Garden Club do not hesitate to contact Catherine, on 01359 242172, Nick, on 01359 242601, or email [elmswellgardenclub@gmail.com](mailto:elmswellgardenclub@gmail.com), a good way of asking a question that will be swiftly answered.**

## ELMSWELL LIBRARY

Hello Elmswell,

We have a chess club starting up in April. The first get together will be from 4.30pm on Thursday 13th April and then will be once a month on the 2nd Thursday. We will have a volunteer running it if you want to play but need a bit of a refresher. It is open to players of all ages.

We are going to be running the Sunflower competition for children again so you can collect your seeds from the 4th April. The different categories will be best photo, most different species seen on your sunflower while it is growing and flowering and tallest sunflower. You do not have to enter the competition if you would like to just grow a sunflower for the enjoyment of seeing it grow.

Our next exhibition is up. It is an exhibition of prints, including limited edition prints, by Fred King. Fred King makes photorealistic black and white drawings and colourful digital drawings. The prints are for sale and are between £85 and £150 with 15% going to support Suffolk Libraries.

Elmswell Library Friends (ELF) are having their AGM at 5.30 on Wednesday 19th April. ELF are a small, friendly group of volunteers who support the library by

Ruth began her talk by saying she had lived in Suffolk, moved away and when returning to the county was immediately drawn to the beauty and variety of nature around her. She was prompted to find out more and began to delve into the 'personalities' of flowers to release meaning and hidden healing power. A legend about the snowdrop reveals that an angel caught a flake of driving snow, breathed life into it and transformed it into a flower for Eve. The snowdrop breaks the spell of winter. 'Galanthus Nivalis' means milky white flowers of the snow and in France they are referred to as 'Snow Piercers'. Daffodils however, with their vibrant yellow trumpets herald spring, bringing joy and cheerfulness to our lives. They are a reminder that we are stronger together as we witness the stunning displays in gardens and parks that seemingly



multiply year on year.

**Next month we welcome Saffron Summerfield to the Wesley on the 18th April to present an illustrated talk that includes her own recordings of bird song. Using the latest scientific research about the state of our British songbirds she will help us discover how our gardens can help birds survive throughout the seasons of the year.**

raising money for little extras like the board games, the floor cushions, and free events over the summer. ELF are having their AGM at the library at 5.30 on Wednesday 19th April. They would love you to come along to hear more about what they have done over the past year, and to tell them what you think would help to make the library even better! If you have ideas for fund-raising and time to help with events that would be fantastic. We look forward to seeing you then.

The book display theme this month is Chefs at home. It seems that Rick Stein, Monica Galetti, Jamie Oliver, Marcus Wareing, Brontë Aurell all like the title At Home for their cookery books and Nigella is a bit more specific using the title At My Table.

We are able to offer the range of books, activities, computer access, printer facilities and warm space in part to donations to Suffolk Libraries. If you are able to, please consider donating to Suffolk Libraries. You can donate via <https://www.suffolklibraries.co.uk/support-us>

See you in the library soon,

*Miles*

## What's on at Elmswell Library?

### Elmswell Library Friends (ELF) AGM

5.30pm Wednesday 19th April

### Story Time

1.10pm – 1.30pm every Tuesday

### Knit and Natter

2pm – 3pm Tuesday 11th April (every 2nd Tuesday of the month)

### Chess Club

Starting 4.30pm Thursday 13th April (every 2nd Thursday of the month)

### The Keep in Touch Community Café

10.30am on Wednesday 19th April at the Wesley Café (every 3rd Wednesday)

### Sunday Crafts

1pm – 2pm every Sunday

### Lego Club

Every Sunday 11am – 12noon

## Opening times

Monday: Closed

Tuesday: 10am – 1pm and 2pm – 7pm

Wednesday: 2pm – 5pm

Thursday: 10am – 1pm and 2pm – 7pm

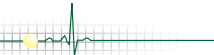
Friday: 2pm – 5pm

Saturday: 10am – 1pm

Sunday: 10am – 3pm



SA First Aid Training



# Giving you confidence in Child First Aid

At SA First Aid Training we offer comprehensive Paediatric First Aid courses designed specifically for parents & child carers.

We can tailor a course to suit you to take place in your own home, workplace or a local venue. Parents, grandparents & care givers will learn the skills they need to save a life & to treat the most common accidents & emergencies.



Specialist courses available including:  
Asthma  
Anaphylaxis  
Febrile Convulsions  
Meningitis  
Sepsis  
Croup

We welcome bookings from individuals, families, groups of friends or as an organisation, please call for an informal (no obligation) chat.

Courses for parents and care-givers are 2-3 hrs.

Child carers will follow an Ofsted 12 hr training syllabus.

We have courses to suit everyone

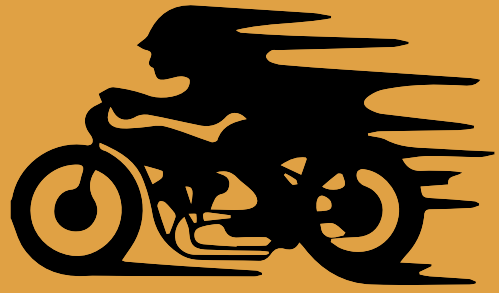


[www.safirstaidtraining.co.uk](http://www.safirstaidtraining.co.uk)

Follow us on Facebook @safirstaidtraining

Call us now on 07500 955339 to find out more

Bookings Available Competitive Prices



## SB MOTORCYCLE TRAINING LTD

STOWMARKET

CBT TO FULL MOTORCYCLE LICENCE

Stuart Burton

MOBILE: 07939 260626

Email: [stuart@sbmotorcycletraining.co.uk](mailto:stuart@sbmotorcycletraining.co.uk)

# STOWMOVERS

WEEKLY DANCE EXERCISE FOR OLDER ADULTS IN STOWMARKET

FRIDAYS 2:00 PM - 3:30 PM



A GREAT OPPORTUNITY TO MEET LIKE-MINDED PEOPLE, HAVE FUN WHILE DOING EXERCISE AND DANCE, AND HAVE A CHAT AFTERWARDS WITH REFRESHMENTS. OPTION TO JOIN IN SEATED OR STANDING. WHY NOT COME ALONG AND TRY FOR FREE?

## John Peel

CENTRE FOR CREATIVE ARTS

JOHN PEEL CENTRE FOR CREATIVE ARTS  
CHURCH WALK  
STOWMARKET  
IP14 1ET



£5.00 PER SESSION

FOR FURTHER INFORMATION & TO BOOK PLEASE CONTACT:

### KAREN PRATT

ARTISTIC DIRECTOR OF  
KAREN LOUISE DANCE

EMAIL: [KARENLOUSEDANCE@GMAIL.COM](mailto:karenlouisedance@gmail.com)  
PHONE: 07751 891319



Photo credits - Mikaela Jodie Photography & Mike Kivaniak Photography



# OUR COMMUNITY LAND AT SCHOOL ROAD

## BACK-STORY

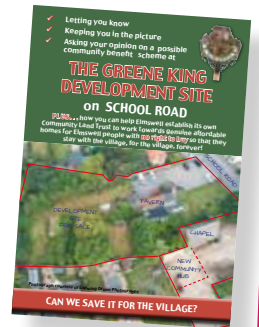
Greene King secured planning permission for 8 houses on the large plot to the rear of their pub on School Road and put the whole site, the Tavern included, on the market. Elmswell Parish Council registered the pub as an Asset of Community Value, making it less attractive to developers. They then consulted the village with a leaflet through every door seeking approval for borrowing from the Government's Public Works Loan Board which would mean an increase in Council Tax to cover the repayments. The response was overwhelmingly supportive and, in March 2020, the Council secured the site for the village, against bids from housing developers, for £805,000.

### The purchase had 2 primary aims :

- To secure the run-down Tavern as a going concern for refurbishment into a community pub offering food
- To build genuinely affordable homes for Elmswell people instead of the 8 large houses planned by the previous owners.

In order to develop the 2 distinct schemes, the Council helped set up 2 independent community bodies as Community Benefit Societies registered with the Financial Conduct Authority;

- Elmswell Community Land Trust (ECLT) to take forward a scheme for the affordable homes
- Elmswell Community Enterprise Limited (ECE) to work towards the re-shaping of the Elmswell Tavern



## AN UPDATE

### Affordables...

ECLT has been engaged with various Registered Housing Providers such as Housing Associations towards finding an arrangement which would attract funding from the Government's Affordable Homes Programme without the constraints of the Right To Buy or Right to Acquire Schemes. However, the recent sudden and, controversially, unannounced project floated by Mid Suffolk District Council to build 50 affordable homes on the community green space off School Road fronting Pightle Close clearly threw the village scheme into jeopardy as the housing need dynamic would be dramatically altered. Decisions on the provision of affordable homes outside of those required on large developments are on hold whilst Mid Suffolk reconsider their original aspirations - a situation complicated by the May election which could change certain aspects of District policy.



### Pub...

The Tavern was bought as a going concern and remained under management until the ECE took it directly under its wing in March 2022 in order to assess the demand for a community pub and to help shape thinking on what that pub might look like. After 9 months of very successful activity, the premises closed in advance of the inevitably poor trading conditions after Christmas and work began to strip out the interior ready for building works. A plan of the proposed premises, firmly based on the original footprint of the existing building, is now being worked up as an electronic version that will allow planning, Building Regulation and engineering considerations to be easily incorporated. This will allow pre-application Planning advice and a full Planning Application which forms the basis for costing the works. There are well experienced building trades and contracts professionals on the ECE team and the Project Management will be kept in-house. Known, tried and trusted Local tradesmen and contractors can therefore be asked to advise on the scope of works required to address the basic essentials such as the roof, drains, plumbing and electrics.



## ...FUNDING

ECE volunteers, with professional advice, spent hundreds of hours drawing up a share issue document and business plan to a recognised industry measure of soundness and reliability, the Community Shares Standard Mark. This allowed the launch of a Share Issue, inviting the purchase of £50.00 shares within the strict rules of the Plunkett Foundation Model Rules for Community Ownership.

Despite post-covid problems and serious financial hardship in many quarters, the Share Issue has raised over £170,000 to date from over 220 investors – people who not only support the idea but are willing to put their money behind that support.



## WHAT NOW?

- **The Share Offer closes on Friday 21st April at 4.00pm.**
- Shares are still available until that deadline – the initial £100k target is well reached, if we can get to £200k we may be half-way to an initial build cost.
- Meanwhile, applications are in for other funding, including to the Government's Community Ownership Fund, part of the 'Levelling Up' agenda, personally backed and supported by Jo Churchill, our MP...
- ...and donations can be made – the preferred option of some of our potential corporate supporters who do not have a framework for contributing through shares purchase.

Until 21st April SHARES can be purchased via [elmswelltavern.co.uk](http://elmswelltavern.co.uk) or contact ECE at the Parish Council Office at Blackbourne – email [elmswelltavernshares@gmail.com](mailto:elmswelltavernshares@gmail.com) telephone 01359 244134

**DONATIONS are welcome by cheque or cash c/o the Parish Council Office at Blackbourne or directly via BACS to:**

**Elmswell Community Enterprise Limited 08-92-99 67224900**

All comment, feedback, advice and offers of other support are very welcome.

## NOT JUST A PUB

*What has emerged after much consultation since this idea was born in 2020 is that Elmswell does not need just another public house.*

*The runaway success of the Wesley experiment, itself riding the momentum of the ever-growing success of Blackbourne, suggests a fast-growing village that appreciates the chance to meet up, to mix, to get together or just to have a safe, warm, welcoming space in which to be.*

*Wesley is bursting at the seams. The Elmswell Tavern, right next door, offers more of the same, with the added dimension of licensed premises offering good pub food and more spaces for formal and informally getting together.*

*It is not just a pub!*



Local Caring Independent Funeral Service

[www.andrewbingham.co.uk](http://www.andrewbingham.co.uk)

**01449 771666**

Golden Charter  
Funeral Plans

The Nutshell, Milton Road South,  
Stowmarket, IP14 1EZ



**CLICK**  
before you call

Need to contact police and it's not an emergency?  
Save time, do it online - [suffolk.police.uk/contact-us](http://suffolk.police.uk/contact-us)

Don't like waiting in queues?  
Then 'Click Before You Call' if you want to report non-urgent crime, anti-social behaviour or a non-injury road incident.  
Simply visit our website: [www.suffolk.police.uk](http://www.suffolk.police.uk) where you can make a report in just minutes.  
Rest assured, all reports made online will be dealt with in exactly the same way a telephone call would be. There is also a vast amount of information on our website and the answers to a large number of questions you may have.  
Nearly 20,000 people made reports online last year and saved themselves valuable time.

Scan this QR Code to contact us online!

**SUFFOLK**  
CONSTABULARY

**CMS Tiles**

**LOCAL TILE AND BATHROOM SHOWROOM**  
BEAUTIFUL BATHROOMS, STUNNING TILES EXPERTLY FITTED ALL AT GREAT PRICES!

OVER 20 YEARS EXPERIENCE IN THE TILE AND BATHROOM SECTOR WITH GREAT KNOWLEDGE, PROFESSIONALISM AND EXCELLENT CUSTOMER SERVICE

- SUPPLY ONLY AS WELL AS SUPPLY AND FIT
- WE ALSO SELL TILING MATERIALS SUCH AS ADHESIVE, GROUTS AND TRIMS!

CALL TODAY TO BOOK A FREE CONSULTATION OR SIMPLY POP INTO THE SHOWROOM WHERE WE WILL BE DELIGHTED TO HELP WITH YOUR REQUIREMENTS.

FOR APPOINTMENTS CALL CLARE ON 07583 964 593  
OR EMAIL AT [CMS.TILES@AOL.COM](mailto:CMS.TILES@AOL.COM)  
[WWW.CMSTILES.CO.UK](http://WWW.CMSTILES.CO.UK)  
[WWW.FACEBOOK.COM/CMS.TILES.BATHROOMS](https://www.facebook.com/cms.tiles.bathrooms)

CMS TILES, UNIT 9D  
CHARLES INDUSTRIAL ESTATE,  
STOWMARKET IP14 5AH

**SUFFOLK**  
AGRI - CENTRE LTD  
GROUND CARE

WE NOW STOCK  
CALOR GAS  
CALOR

**SUPER DEALS ON....**  
LAWNMOWERS, STRIMMERS,  
CHAINSAWS AND HEDGE CUTTERS

**ATCO** **COUNTAX** **TIGA**  
Lawnmowers, Chainsaws, Strimmers and Hedgecutters

CALL IN TODAY OPEN MON-FRI 8-4.30  
Suffolk Agri Centre Ltd, Fen Road, Pakenham, Bury St. Edmunds, IP31 2JS  
Tel: 01359 232155

**REASONABLY PRICED SERVICING**  
Our set service **ALL** makes  
Walk behind **£100** inc vat  
Ride-ons up to 30" **£175** inc vat  
Lawn Tractors over 30" **£215** inc vat  
Cylinder Grinding also available

**Service you can count on!**

GIVE WHAT YOU CAN  
TAKE WHAT YOU NEED

**GIVE HOPE SHELTER**

EVERY MONDAY & FRIDAY  
10AM TO 1PM  
IN THE GARDEN OF ELSWELL TAVERN,  
SCHOOL ROAD, ELSWELL, IP30 9EE

[GIVE HOPE SHELTER ELSWELL](https://www.facebook.com/givehopeelmswell)

## **M.O.T. DUE**

Require a quick reliable service ?

M.O.T. classes 4 and 7 tested.

Tests available for all types of cars and vans up to 3.5 tonnes gross.

Local collection service available.

Also repairs and servicing available on request.

**D A BEVAN  
THE WORKSHOP  
GROVE LANE  
INDUSTRIAL ESTATE  
ELMSWELL**

**PHONE 01359 241158 / 244421**

tcllandscapes.co.uk



## The Country Life Landscapes



*'Growing with you'*

### Supply

Decorative Stones  
Soil Improver • Turf  
Aggregates • Stones  
Woodchips • Barks  
Hardcores • Logs  
Sands • Topsoils  
Composts & More

### BULK BAG

Garden Supplies  
& Waste Collection

Tel: 01359 240094

Email: [orders@tcllandscapes.co.uk](mailto:orders@tcllandscapes.co.uk)

- Design
- Construction
- Maintenance

As well as a complete landscape and maintenance service, we offer garden supplies and waste collection



### Collection

Green Waste  
Wood • Soil  
Turf • Weeds  
Hardcore • Stone  
Brick • Slabs  
Concrete • Metal



## **P H Peckham**

**Plumbing & Heating Engineer**

T. 01359 240958 M. 07802 642884

e. [phpeckhamplumbing@gmail.com](mailto:phpeckhamplumbing@gmail.com)

- 24 HOUR CALL OUT
- FREE Estimates
- Corgi Registered Solid Fuel, Oil or Gas
- Bathroom Suites Designed and Installed
- Water Softners Fitted
- Tiling
- Boilers Serviced



**214650**

## **T.P. Services**

**UPV-c Window & Door  
Repairs**

**Sealed Units, Hinges,  
Locks, Handles, Letter Boxes**

**Over 30 years'  
experience, free  
quotations**

**Contact: Tom**

**Mob: 07957 098118**

Email: [tpservices65@gmail.com](mailto:tpservices65@gmail.com)

## **Wayne Salmon Electrical**

For all your electrical requirements -  
Domestic, commercial and industrial.

All work carried out to a high standard.

**Mobile 07843 302798**



## **BJW PLUMBING & HEATING YOUR RELIABLE LOCAL PLUMBER**

Boiler Servicing  
Central Heating Installation  
Maintenance & Repairs  
Bathroom Suites, Showers, Tiling  
Install Washing Machines/Dishwashers  
Burst/Leaking Pipes  
Water Softeners  
General Plumbing Needs



**200169**

**GAS Safe registered 200169**

**BARRY WARD: 01449 615339/07734 872549**

## **BLOMFIELD MAINTENANCE**

**GAS ENGINEER**

***Natural and Propane (LPG)***

Servicing and repairs of:  
**BOILERS & COOKERS**

**COMMERCIAL CATERING  
EQUIPMENT**

Installation of:  
**COOKERS and HOBS**



**134842**

**LANDLORD GAS  
SAFETY CHECKS**

**01359 241454**

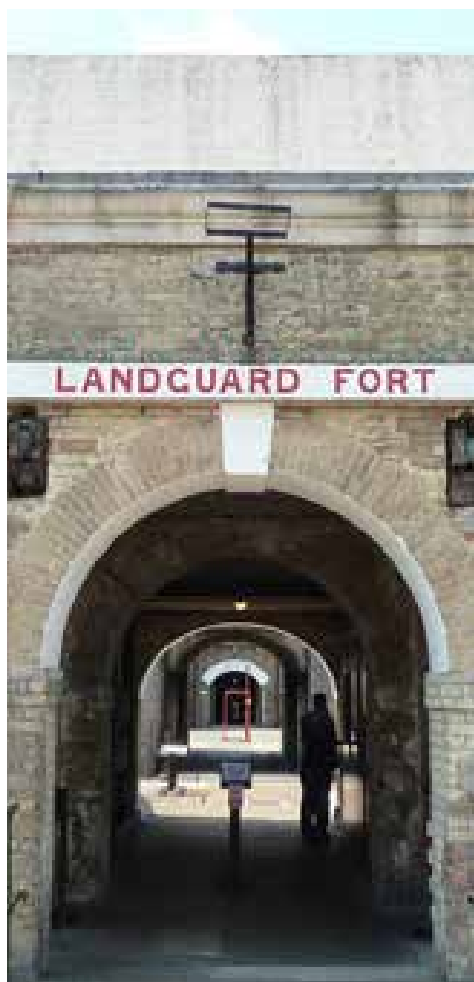
**07889 616937**



## ELMSWELL HISTORY GROUP

**Our 9<sup>th</sup> March meeting** – a good few hardy souls braved the snowy evening to hear Geoffrey Robinson's fascinating talk on "18<sup>th</sup>-century Commerce in Worlingworth", his small village (pop.300-400 in the 1700s) north-west of Framlingham. As detailed on contemporary maps, we were led down Shop Street and shown the main village shops which were owned by the Cordy, Ray, Clarke, and Godbold families. Like so many others, this rural parish used to be virtually self-sufficient, and a farm labourer's family relied on their village shop for the necessities of life, i.e. food and clothing, although a family's needs were very basic such as flour to make bread and pies, hard cheese (the notorious Suffolk 'bang' also used by the Royal Navy because of its enduring quality on long sea voyages!) and perhaps some rough cuts of meat or bacon, although the 'drinking beer' (or ale) would be have been made at home. From the 1743 map of the Red House Estate, we saw the adjoining farmland, shop and warehouse as well as the maltings, which suggested a much larger concern than just a grocery and drapery business, concluding that this village was, in fact, the centre of a thriving retail business for the surrounding area. This was further illustrated by the 1815 shop inventory of School House which detailed large quantities of all types of fabrics, household goods, and spectacular amounts of alcoholic commodities, e.g. over 400 gallons of spirits, which must have required some form of licensing with the authorities and excise payment. Hence, the wonderful Crown Symbol inlaid by 'blue' flint into the entrance path to the cottage. Whatever the circumstances were in which this lovely house turned from a major trading post through dame school and into the schoolmaster's accommodation in 1875, it would be fair to say that this property was at the centre of a significant commercial enterprise on Shop Street for over 150 years. In honour of the village shopkeeper and philanthropist, James Cordy (with connections to Felixstowe and Woodbridge), one of the newer roads in the village has been name Cordy's Meadow, and we were all pleased to learn that the village now has an all-purpose and well-supported shop once again.

### IDEAS FOR THE EASTER HOLIDAYS



**Felixstowe's Landguard Fort, Viewpoint Rd, IP11 3TW** – Easter activities for the kids, and a maze of rooms, tunnels and passageways to explore in this 1740s Grade-1 listed fort. Free entry for English Heritage members, adjacent parking and café overlooking the busy container port to see the huge ships. Then, perhaps take the foot-passenger ferry across the river mouth to Harwich. Tel: 01394-675900, [www.landguard.com](http://www.landguard.com)

### Electric Palace cinema and Lightship, Kings Quay St, Harwich, CO12 3ER

While visiting the **Harwich lightship** (see Feb's report), why not stroll along the quay where you'll find tucked away in a side street one of the oldest surviving cinemas in England. Built in 1911, it predates virtually all others, and yet it survives to this day as a functioning cinema showing modern films. The Electric Palace is an architectural gem so it is not surprising that the charity which owns it is supported by several national organizations, and it is a Grade-2 listed building. It is readily accessible, being only 100 metres from the car park near the public pier. Tel: 01255-553333, [www.electricpalace.com](http://www.electricpalace.com)



For our 23<sup>rd</sup> anniversary meeting on **13<sup>th</sup> April, 7.30pm at the Wesley**, we welcome back Miriam Stead to tell us all about "Halesworth's 17<sup>th</sup>-century Walpole Old Chapel". This is one of the oldest Nonconformist chapels in England, recently described by Historic England as an "historic gem", and has a fascinating history which often reflects major changes or events in broader society. Miriam will tell us about their community history 'Discovery' project which was started in 2020, to find out if there was more history to be unearthed, and to look for the human stories behind the facts. Do join us then to learn more.

**Elmswell  
History  
Group**

For further information about our History Group, please visit our website –

**[www.elmswell-history.org.uk](http://www.elmswell-history.org.uk)**

or contact our Secretary, on 01359-242601



## ST JOHN'S CHURCH

### Greetings from St John's Church

We all love a nice wedding, but did you know that marriage is not only a beautiful gift of God? It also provides love, unity, security and research even suggests it is good for your bank balance!

Maybe you are thinking of getting married this year or maybe next year. Have you thought about getting married at St John's Church? A church wedding is something rather special and our beautiful, historic building is a great wedding venue. If you live, or have ever lived, in the parish or have a connection through your family, it is possible to get married here. Even if none of these apply, you are still be able to get married at St John's if you regularly attend services over a 6 month period. To find out about weddings at St John's, check out our weddings page on our web site - <http://www.stjohnselmswell.org.uk/weddings.php>

Spring is a time of new life. New leaves start to appear on trees, lambs appear in fields, rabbits invade our allotments. But Spring also sees the Easter season and the promise of new and eternal life from God. On Good Friday we will be gathering with other Christians in Elmswell to remember how Jesus died on Good Friday to set us free from the powers of darkness and death. Do join us at 10:00am on the green by the train station. And on Easter Sunday, we celebrate the resurrection of Jesus as he rose from the grave, proving that our hope in him is well-founded. If God raised Jesus from the dead, he will also raise those who look to him in faith also. You are very welcome to come along

on Easter Sunday at 10:30am to find out more.

We are a warm and welcoming church and love to share the good news of Jesus. We meet weekly at 10:30am and have groups for children, which include a story from the Bible and a craft. Why not pop along to discover more about the God who made us and loves us? Tea and coffee are available afterwards.

### Upcoming Dates:

Sun 2 Apr 9:00am	Holy Communion
Sun 2 Apr 10:30am	Palm Sunday Family Service with baptism
Thu 6 Apr 7:30pm	Maundy Thursday Communion
Fri 7 Apr 10:00am	Good Friday on the Green (by the station)
Sun 9 Apr 10:30am	Easter Sunday Family Communion
Sun 16 Apr 10:30am	Sunday Worship & Sunday School
Sun 23 Apr 10:30am	St George's Day service for all ages
Sun 23 Apr 11:50am	Short Communion following earlier service
Sun 30 Apr 10:30am	Service with annual meetings

### Every Saturday:

9:00am Weekly prayer meeting online (see website for details)

We live stream most of the 10:30am services on our Facebook page (also available on our main web site later that day).

Rector: Peter Goodridge

Email: [elmswellrector@gmail.com](mailto:elmswellrector@gmail.com)

Tel: 01359 240512

Web site: [www.stjohnselmswell.org.uk](http://www.stjohnselmswell.org.uk)

Facebook: [www.facebook.com/stjohnselmswell](http://www.facebook.com/stjohnselmswell)

YouTube: [www.youtube.com/@stjohnselmswell](http://www.youtube.com/@stjohnselmswell)



## ST. JOHN'S CHURCH TOWER FLOODLIGHTING

Everyone is welcome to sponsor the floodlighting of St. John's, a lovely way to commemorate a personal event, an anniversary, or any other special occasion. Alternatively, you can simply make a donation. And it all helps to pay the day-to-day running expenses of our parish church.

During April the lights will be on between 7.30 p.m. and midnight.

A night's floodlighting costs £5.

Cheques payable please to "ST. JOHN'S CHURCH, ELMSWELL".

Your support is very much appreciated.

Thank You.

### APRIL 2023 SPONSORSHIPS

- 2 to remember and thank all those Elmswell Fire-Fighters who have served their village and community so well.
- 9 remembering Grace Rush, a dear Mum, Grandma and Great Grandma, on her Birthday.
- 12 in loving memory of Cecil Salmon - greatly missed by all his family.
- 14 remembering Carl Finch on the anniversary of his death in 1999.
- 14 in memory of Ray Borrett's Birthday.



- 17 in loving memory of Jane Goodchild. Love, Colin. xx.
- 20 in memory of Jim Baker (1933 - 2009) on his Birthday.
- 22 in loving memory of Teasel.
- 23 remembering Carl Finch on St. George's Day.
- 30 in memory of David Lakey.

**All bookings and payments please to :-  
Trevor Sadler, Abbots Warren, Church Road, Elmswell (Tel: 240908)**

## CATHOLIC PARISH OF OUR LADY, STOWMARKET

**Parish Priest:** Rev. Simon Leworthy, The Presbytery, 29 Lockington Road, Stowmarket, IP14 1BQ  
Tel:01449-612946  
E-mail: pp@ourladystowmarket.org.uk

**MASS TIMES:**  
**Saturday (First Mass of Sunday) – 6PM**  
St Mary's C of E Church, Woolpit IP30 9QG

**Sundays – 8.30am & 10.15am**  
Our Lady's, Stricklands Road, Stowmarket IP14 1AW

**Holy Days – 10am & 7.30pm**  
Our Lady's Strickland Road Stowmarket

Weekday Mass is usually 10am, see the weekly Newsletter or the Parish Website – [www.ourladystowmarket.org.uk](http://www.ourladystowmarket.org.uk)

All are welcome to "Coffee and Chat", 2 – 4pm on the 2<sup>nd</sup> and 4<sup>th</sup> Thursday of the month. This is held in the Parish Hall above the Church – a lift is available.



## ELMSWELL BAPTIST CHURCH

Lee Strobel is an American investigative journalist who as an atheist set out several years ago to disprove the resurrection of Jesus Christ. By the time he'd finished his investigation he believed that the resurrection did take place as described in the Bible! What he found was, using accepted historical research methods,

that the bible account is more supported by historical evidence than many other things that people accept as being fact. Among the things that helped change his mind was the Bible's use of women as some of the main witnesses. If you were inventing a story in 1st Century Palestine you wouldn't use women as key elements of your story as they were considered unreliable as witnesses. Many millions of people over the last two thousand years have accepted Jesus Christ as their Lord and Saviour and found him to be a reliable friend and many millions still do. As we celebrate Easter this month, the most important festival in the Christian calendar (Christmas without Easter is meaningless, just a cosy story about a baby) we remember the sacrifice made by Jesus for each one of us which means we can experience a glimpse of God's kingdom whilst here on earth and look forward to an eternity in his presence.

The alternative as described by Jesus is just unimaginably awful. The most important decision anyone can make in this life is what to do with Jesus Christ.



Would you like to know more? Come and join us on Good Friday on Crown Mill at 10.00am or, and at the chapel in Ashfield Road on Easter Sunday at 10.30am.



The **Ladies Friendship Group** meet on **Monday April 3rd at 2pm** when Liza Jones will be coming to talk about "Savvy Shopping". ALL ladies are welcome. There are an increasing number of ladies attending these meetings, why not join them, not just for the interesting talks and friendly chat afterwards, but also to enjoy our warm chapel!! Phone Margaret on 01359 241541 for more details.

On **Good Friday, April 7th Christians Together in Elmswell** will be holding a short service at Crown Mill (by the level-

crossing) followed by Hot-Cross Buns. Do come and join us.

**Food 'n' Friends** meet at **Midday on April 13th** for a hot meal for a donation of whatever you can afford, and plenty of time to chat. ALL older folk are welcome, contact Jackie on 01359 245918 for more info. Again, it's not just the good food and friendly chatter but a warm building as well!

We are grateful to all those who come to preach each week. Our preachers at our 10.30am services in the coming weeks are as follows:-

April 9th Rev. Norman Tharby – Easter Sunday

April 16th Rev. Richard Edwards

April 23rd Martin Lancaster

April 30th Rev. Norman Tharby

May 7th Stephen Spurgeon (inc Communion)

A warm welcome (in all senses of the words) is extended to all who wish to participate in any of the above events.

Please visit our website for further info or email [cockant2@btinternet.com](mailto:cockant2@btinternet.com) or telephone 01359 241541 to get in touch.

Have a truly blessed Easter.

Tony

## Norton Salvation Army

**Saturday 22nd April 2023**  
**10.00 am - 12.00pm**

**Sale of Jigsaws Books Cakes**



**Tea, Coffee, Refreshments will be available**

**Worried about Savings?**

Let our team of financial advisers help you to get the most from your savings and investments.

**Confused about your pension?**

We would be happy to discuss the options available for your retirement planning.

**Want to protect your family or income or mortgage and loan?**

We are here to advise on the right solutions for your budget.

**Mortgages?**

For a competitive mortgage, we have advisers to assist with that purchase or remortgage.

**Equity Release**

We have advisers able to assist you with this area of advice.

Equity Release will reduce the value of your estate and can affect your eligibility for means tested benefits.

We make it



The Old Police House,  
Cooks Road, Elmswell,  
Bury St Edmunds,  
Suffolk IP30 9DB.  
**Tel: 0345 271 3245**



**TRAVEL STOP**  
BIG ENOUGH TO OFFER THE WORLD, SMALL ENOUGH TO CARE

The world is open, book your next trip with Travel Stop



Tel: 01359 242555 email: [elmswell@travel-stop.co.uk](mailto:elmswell@travel-stop.co.uk)

The office is open for walk-ins and appointments on Thursdays and 9am to 5:30pm for phone and email enquiries Monday to Saturday.

**Don't just take our word for it ...**

"From the outset the service we received was prompt, efficient, first class and friendly - with good feedback."

"Your service was helpful & professional from start to finish. We were most impressed."

"My house sold within days of you putting it on the market and thereafter you were always on the end of your phone, in order to answer my many questions."

"Your knowledge of the local property market proved invaluable and your attention to potential purchasers, a great time saving asset."

"I have used Coakley & Theaker Estate Agents to sell three properties, all of which they handled extremely professionally."

"We can only praise Simon for the solid, professional and enthusiastic work that went into the sale."

"Your patience and liaising went a long way to bringing everything to the right conclusion. You gave it the personal touch which goes a long way."

"The professionalism and 'go the extra mile' attitude, which you do not seem to get from the big corporate agents, will be the reason we shall be returning in future."

"Your experience and calm and collected manner really showed through."

"We were grateful for your sound advice, help, willingness to be flexible and of course for quickly finding us a buyer."

"Your diligence, patience and constant shepherding of the multiple parties involved has seen the matter through to its positive conclusion."

"From start to finish you kept us informed on everything, making the whole experience stress-free."

"I recommend their services as you are treated more as an individual human being and not a number."

"Dealing with Simon was a comfort during what was a daunting process."

**PLEASE CALL FOR YOUR FREE VALUATION**  
01284 769691 • 01449 737706 • 07803 138123  
or visit [www.coakleyandtheaker.co.uk](http://www.coakleyandtheaker.co.uk)

**NOW IN ELMSWELL**  
CALL 01359 256821  
Reduced fee for Elmswell Sellers\*  
T's & C's and minimum fees apply



\*If you have instructed another agent on a sole agency basis, then the terms of those instructions should be considered to avoid a possible liability to pay two fees.





**Join us for one of our summer workshops**

Following on from the success of last year's spoon carving courses, we're planning some exciting craft sessions this summer! Whether you're a complete beginner, or have some experience but want to hone your skills, there's plenty to enjoy for everyone.

We start in May with two willow weaving sessions. We're very lucky to have engaged Jo Hammond to lead both courses. Jo is a very experienced and innovative basket weaver who has written books on the subject and frequently gives talks and demonstrations.



**Saturday 27th May, 9.30-12.30: make a willow dragonfly.**



**Saturday 27th May, 1.30-4.30: make a willow plant support.**

For both sessions all materials and tools are provided. Suitable for ages 16 plus. Children of 13 plus are very welcome to attend with a supervising adult working together.

In June we are very pleased to welcome back **Fay Jones** who is well known in these parts as The Woodland Haberdasher. Fay will be sharing her knowledge of natural dyeing using a variety of natural materials and a range of yarns and fabrics.



**Saturday 17th June, 10.00-4.00: Colours of Lukeswood (natural dyeing).**

All materials provided (some will be foraged from our own woodland!). Suitable for ages 16 plus, and children 13 plus working with an adult.

All workshops are at Lukeswood. We will provide tea and coffee (but please bring a packed lunch for the day session in June, or if you want to

attend both willow weaving sessions). We will be outside but under cover (thanks to our wonderful roomy new marquee) and our eco loo will be available.

Each session costs £25 per person, payable in advance. If you would like to book a place or to get more information, please contact us – email [info@elmswild.org.uk](mailto:info@elmswild.org.uk) or ring 01359 241901.



**Avian flu strikes close to home**

Many readers will be aware that Avian Flu is now beginning to have a disastrous effect on wild birds, especially water birds and raptors. We were very concerned to find a dead sparrowhawk at Kiln Meadow recently, so reported it to DEFRA who collected it for testing. We're sorry to report that it tested positive, so we know that this disease is now killing some of our beautiful birds of prey here. There is very little risk to people, but please follow the DEFRA guidelines when you're out and about. This helps to prevent the disease spreading.

**BIRD FLU HAS BEEN DETECTED IN THIS AREA DON'T RISK SPREADING IT!**

- Keep to the footpath, with **dogs on leads**
  - Do not feed wild waterfowl
  - Do not **pick up or touch** dead or sick wild birds
  - Do not touch wild bird feathers or surfaces contaminated with wild bird droppings
  - If you keep poultry or other birds, wash your hands, clean and disinfect your footwear before tending to your birds
  - If you find:
    - 1 or more dead birds of prey (such as owl, hawk or buzzard)
    - 3 or more dead birds that include a least 1 gull, swan, goose or duck
    - 5 or more dead birds of any species
- Please report online <https://www.gov.uk/guidance/report-dead-wild-birds> or call the Defra helpline on 03459 335577

APHA may collect some dead birds for surveillance testing. Otherwise, birds can be disposed of safely, if necessary, by the local authority on public land or by the landowner/manager.



Mary Feeney  
[info@elmswild.org.uk](mailto:info@elmswild.org.uk)



# PARK GARAGE SERVICES

Units 1-2, Station Rd Industrial Estate, Station Rd, Elmswell, Bury St. Edmunds, Suffolk IP30 9HD.

ALL TYPES OF SERVICING - WELDING - MOT WORK - CLUTCHES - EXHAUSTS - SHOCKS  
AIR CONDITIONING - TYRES - COMPUTER DIAGNOSTICS - BATTERIES - CAMBELTS - BRAKES

Your **LOCAL GARAGE** with over 20 years experience servicing and repairing all makes and models.

**TEL: 01359 242479 OR VISIT: WWW.PARKGARAGESERVICES.CO.UK**

## Hicks TV & Audio Solutions

(Formerly BV Hicks Ltd)

**Are you having trouble setting up or operating your TV / Audio or DVD?**  
**Has your equipment stopped working?**  
**Does your TV need a re-tune?**

**Help is at hand - Call Toby Hicks**  
**01449 771991 / 07968 686035**

**NEW DOMESTIC APPLIANCES AND TV PRODUCTS SUPPLIED**

**Upholstery**  
**Carpets & Rugs**  
**Amtico+Karndean**  
**Curtains**

t.01359 241577    m.07398251908  
westsuffolk@servicemaster.org.uk

Google ncca Yell.com

www.servicemasterclean.co.uk/west-suffolk

## The Old Tea Room Veterinary Surgery

For a professional caring service

**Tel: 01359 241 761**

Station Road, Elmswell,  
Bury St Edmunds IP30 9HA

[www.elmswellvets.co.uk](http://www.elmswellvets.co.uk)

# HAYWARDS

## SOLICITORS

**FOR ALL YOUR FAMILY LEGAL NEEDS**

**We offer Fixed Fees at Competitive Rates**

**Telephone: (01449) 613631**  
email: [enquiries@haywards-solicitors.co.uk](mailto:enquiries@haywards-solicitors.co.uk)  
**www.haywards-solicitors.co.uk**

**Free Car Park Available For Use By Clients.**  
7 - 9 TAVERN STREET, STOWMARKET, SUFFOLK IP14 1PJ

## F. G. BROWN - OPTICIANS

Denmark House,  
41 Bury Street,  
Stowmarket

**Tel:- 01449 612812/674030**

As independent opticians we offer a more personalised eyecare service that you can trust for all the family including:-

- Optomap retinal examination
- Colorimetry
- A wide range of competitively priced frames and spectacle lenses
- Contact lenses
- Prescription and non-prescription sunglasses

**Your sight care is our priority**

CHIP AND PIN AVAILABLE   

# ROB'S TAXI SERVICE

# 07429 446036

LONG & SHORT DISTANCE  
COURIER WORK  
CONTRACTS WELCOME



## PAUL SCASE Home Improvements



### Painting

- Using the best named paints to give you a professional finish
- Colour charts provided to give you the best choice of colours

### Carpentry

- Wardrobes made to your design
- Floor to ceiling, wall to wall

- General Carpentry & DIY

Excellent Rates

Mobile: 07745 250440

# DRT

Landscapes &  
Groundworks  
Ltd.

All aspects of  
landscaping and  
small scale groundworks

Specialising in:

- Patios/pathways/driveways
- Turfing - including wildflower turf
- Ponds - Koi/new build/maintenance
- Garden maintenance
- Ground/site clearance works
- Remedial/demolition works
- Drainage/land drains

Darrell: 07828 925742

Email: [DRTlandscapes.RG@gmail.com](mailto:DRTlandscapes.RG@gmail.com)  
Facebook: DRT Landscapes  
[www.drtilandscapes.co.uk](http://www.drtilandscapes.co.uk)

# Do you require **PRINT**?

call Jason on **01473 652354**  
[jason@pfpprint.co.uk](mailto:jason@pfpprint.co.uk)

PFP PRINT Ltd

Elder House | Chattisham | Ipswich | Suffolk | IP8 3QE  
[www.pfpprint.co.uk](http://www.pfpprint.co.uk)



**TONY FISHER**  
**PLUMBING & PROPERTY MAINTENANCE**

- 24hr Emergency Callout
- Bursts, leaks, blockages etc.
- Bathroom/shower installation
- Tanks/cylinders/radiators
- Tiling floors/walls
- Painting & Decorating
- General DIY jobs
- Garden Maintenance

**Tel. 01359 242556**  
**Mobile 07758327743**  
*Reliable & Friendly Service!*

*moving home this spring*

**Spring has sprung and we here at allhomes have everything you need to get moving. With our innovative marketing and excellent customer service, get a spring in your step today!**

**allhomes**  
 01359 234444  
 mail@allhomes.uk.com

Diagnostic Testing

**M.K.AUTO'S**

- Car & Light Commercial Service & Repair Specialist
- General Servicing, Maintenance and Repairs on All Makes and Models
  - MOT Preparation and Repairs
- Recovery, Collection and Delivery Service

FOR A PERSONAL SERVICE AT A COMPETITIVE RATE PLEASE CALL ON

**Tel: 01359 245 998**  
**Mob: 0780 5604793**  
 Unit 3  
 The Old Coach Yard - Grove Lane Ind. Est.  
 Elmswell IP30 9HN

**NO VAT!**

ALL MAJOR CREDIT CARDS ACCEPTED  
 Appointment Not Always Required  
 • CAMBELT • HEAD GASKETS

T Y R E S • E X H A U S T S • B A T T E R I E S • C L U T C H E S  
 B R A K E S • W E L D I N G • S U S P E N S I O N • T U N I N G

**Computer Help**

PC, Mac, Server or Tablet support in your office or home.  
 A rapid response from a qualified IT professional.

- laptop and desktop repairs, speed up your system
- cyber security, cloud systems, network setup
- data recovery and virus removal
- improve wifi, smart TV, phone, tablet etc
- individual tuition

**Gage Computer Services** (01359) 245273  
 www.comphelp.co.uk steve@comphelp.co.uk

Microsoft Est. 2003 Certified Pro

**MEET AT THE VILLAGE SIGN  
 11 AM ON SUNDAY  
 ?TH APRIL**

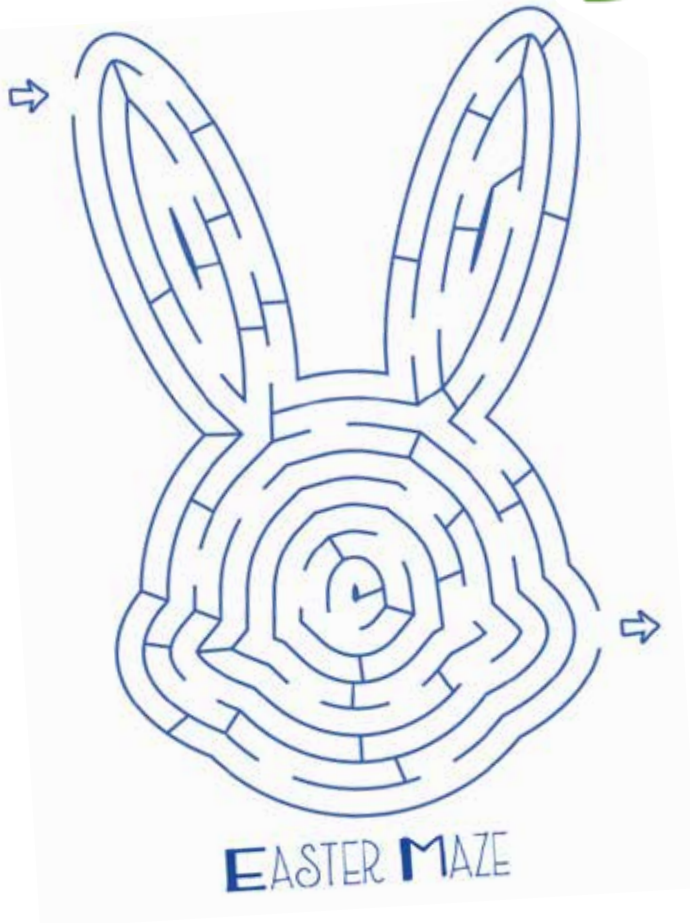
*Way to go...*

Elmswell's monthly footpath walks take in footpaths around and about the village...4 miles maximum – easy walking, everyone welcome, dogs on leads please .

All walks start from the village sign on Crown Mill.



# EASTER FUN



## Easter Egg Hunt!

What goes broom and travels far? Your first egg is by the car!

Where the tooth fairy leaves a pound, is where your next egg will be found

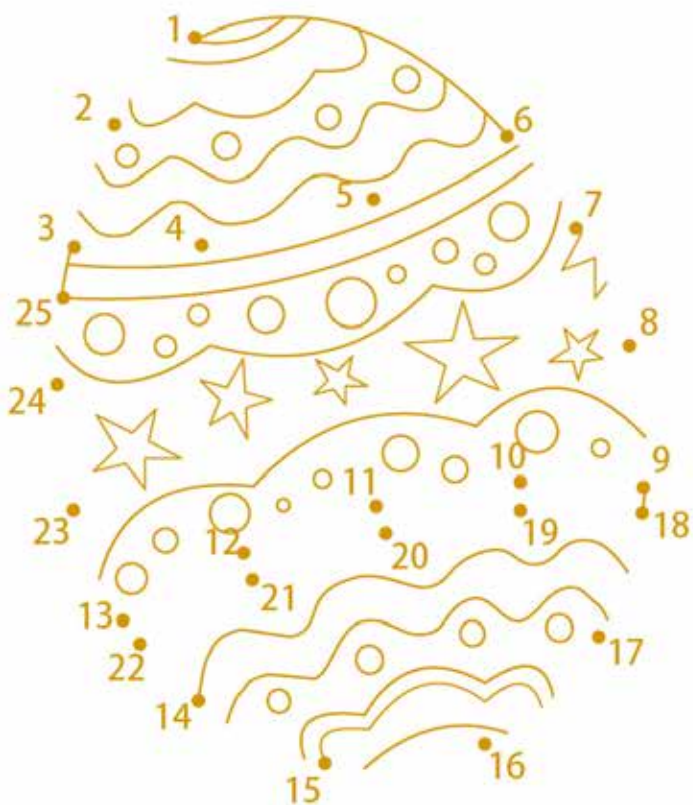
We hope it's not spinning round, your next clue is where bubbles are found

It's been a long hunt, you need a rest, go lay down by my bed!

The next egg is inside, somewhere that a dog may hide!

The final egg is by the door, check below on the floor!

## Easter Egg Dot To Dot!



## Easter Masks

Using paper plates, paint, scissors and lollipop sticks create your very own bunny rabbit mask!



Carefully cut out your eyes and ears and use craft materials around your home for the nose and whiskers!

You could even wear these for your own easter egg hunt!

This page sponsored by



# ELMSWELL FOOTBALL CLUB



## Upcoming Home Fixtures

08/04 Elmswell Res vs Capel Plough 'A'	2:30ko
11/04 Elmswell Res vs Bacton 'A'	6:15ko
20/04 Elmswell vs Sporting Res	6:15ko
22/04 Elmswell Res vs Stow Falcons 'A'	2:30ko
29/04 Elmswell Res vs Samuels	2:30ko
06/05 Elmswell Res vs Somersham Res	2:30ko

**SMALLER SIZE ADVERTS**

**LIKE THESE, NOW AVAILABLE**

**CONTACT CLUB SECRETARY**  
edddd101@gmail.com

*your* **YOUR COMPANY**  
*Logo* **YOUR TELEPHONE**

### FIRST TEAM REPORT

The start of March saw us take on another mid table side Claydon Reserves, we started slowly which seems to be the story of our season and found ourselves a goal down early on. The second half was a great battle between the sides, the end result being a 2-2 draw with Romaine Scott grabbing both goals. We felt if either team deserved the win it was us but a point was a fair result for the game. Man of the Match Charlie Potter. Up next we took the short trip to league leaders and rivals Thurston, it appeared that not many regulars fancied the tough ask of a team who hadn't lost for over a year with the majority of the match day squad being made up of the reserve team. With 1 wonder goal and a dubious penalty for Thurston we saw ourselves 2 down but far from out of the game, everyone battled hard and put in a shift and although we walked away with a 2-0 defeat it was a game that wasn't as one sided as everyone expected and we put on a good show of ourselves bearing in mind Thurston have scored over 80 goals this season. Man of the Match Jack Macdonald. We then faced a trip to Bury to play a well drilled and young Sporting 87 Reserve side, like most games we started slowly and found ourselves not only a goal down but a player down as Dylan Palfreyman was sent off for a bad tackle. We came into the last 20 mins at 2-2 with Will Hayden adding to his already impressive goal tally for the season and Thomas Morgan scoring his 1st for the club with a cross-cum-shot finding its way in. But with 10 minutes left Sporting made the extra man count and scored the winner. The feeling in the changing room was that if we had 11 on the pitch it was a very winnable game. Man of the Match Eliot Gunter Off the back of 1 point in 3 games we also found out Bramford folded and we've had the 6 points and + 16 goal difference taken away from us leaving us further down the table. With the regular Elliott Gunter off to Cyprus for 9 weeks we now travel to bottom side Bardwell for a must win game.

*Liam Trickey, First Team Manager*



## BADWELL ASH RUMBLES

FISH BAR - BURGERS - FRIED CHICKEN

TELEPHONE ORDERS WELCOME

**TEL: 01359 258 258**

THE STREET, BADWELL ASH IP313DH

### TOMLINSON Sales Service

Set in 20  
acres

Try before  
you buy

Call our  
friendly team  
for advice



Hall Orchard Buxhall  
Tel 01449 736060



retainerposts.com

We are pleased to help support Elmswell FC part fund the new kit

Retainer posts supply steel retaining posts for all landscape projects; big and small. Manufactured bespoke to individual customer requirements. Nationwide delivery available.



Contact us on:  
No : 07494 864231



CARPET & UPHOLSTERY CLEANING SPECIALISTS  
t.01359 241577 m.07398251908  
westsuffolk@servicemaster.org.uk



### RESERVES REPORT

Since we last met, Bramford Utd have left the Suffolk and Ipswich League so our goals and points from that game have been chalked off. This leaves us one place off bottom but with several games in hand on most teams above us. As our first two games of the season were abandoned due to serious injuries we now have a very packed April schedule (as you can see on the home fixture list on the other page).

After our cup exit we faced Kesgrave Kestrels who are just two points above us having played four more games. It was a very close game and a couple of stray passes in midfield, one in each half, allowed Kesgrave to break on us and score. This was all that divided the teams and so it finished 0-2. Kurt Bevan was Man of the Match.

The following week Saxmundham Sports Reserves made the trek over to The Blackbourne. We were strengthened by the return of last year's top goal scorer Jake Fisher as well as Matt Last. We started a little disjointedly with a few players returning and who hadn't played together but after a slight tactical change we found our rhythm. Matt Last scored two, set one up and got a deserved Man of the Match. Luke Catchpole, Jake Fisher and Ally Clarke also scored as we ended up fairly comfortable 5-2 winners.

Last week we then went to second place Eye Saints. A tough prospect but we were able to call on a couple of first team players. It was pretty even in the opening stages and we went 1-0 up with a Paul Cable goal. Our fortune continued as one of their strikers got sent off for abusing the referee but this only rallied their team who played more like 12 men than 10. An own goal equaliser in the opening minutes of the second half only spurred them on further. We lacked options from the bench but when they then went 2-1 ahead we made a change of formation which helped stemmed the tide and we started to control the game a little. As we pushed for the equaliser they caught us on the break and so it ended 3-1. Man of the Match Aidan Ashton.

Come along to one of the many games at The Blackbourne this month to cheer on the lads! Up the Elm!



MATCH DAY SPONSOR

**PARK GARAGE SERVICES**

*your local garage*

**ALL MAKES & MODELS SERVICE & REPAIRS**

**01359 242 479**

**GROUND CARE**  
Parts Toys



**AL-KO**

**EGO**



**ECHO**

**WEIBANG**

Stowmarket IP14 3DL  
www.tomlinsongroundcare.co.uk

**0% LANDFILL**

**CULFORD WASTE LTD**

Family Run  
Est. 1989



**SKIP HIRE**

2 to 12 yard skips for hire.  
15-40 yard roll on roll off skips for hire.

**BAG HIRE**

An excellent alternative to hiring a skip when either space is restricted or a skip is simply just too big.

**AGGREGATES**

Recycling such materials after crushing and screening allows Culford Waste to provide a substantial range of aggregates. Aggregates can be delivered bagged or loose.



**GRAB LORRY**

Our grab lorries are eight wheel based with payloads of 17 tonnes, and can grab all types of waste.

**SCRAP METAL COLLECTION SERVICE AVAILABLE**

Please call for details

**01284 728950**  
**ORDERS@CULFORDWASTE.CO.UK**

Office Hours:  
Monday - Friday: 8am - 5pm  
Saturday & Sunday: Closed

**ARGICULTURAL**

Where burning or burying waste is no longer an option for farmers, Culford Waste provides a disposal facility for farmers.

# TBS HIRE

Available to Hire from  
a modern Fleet:

- Diggers & Dumpers
- Access Equipment
- Power Tools
- Concreting Equipment
- Landscaping & Garden Machinery
- Stump Grinders and Chippers



Plant & Tool servicing and  
repair also undertaken

Thurston Rd,  
Great Barton,  
Bury St. Edmunds, Suffolk, IP31 2PJ  
T: 01284 788122  
E: info@tbs-hire.co.uk

[www.tbs-hire.co.uk](http://www.tbs-hire.co.uk)



## FENCING, GARDENING & PATIOS

All fencing supplied and erected  
All garden work...regular maintenance or one-off

- Grass cutting up to 3½ acres
- Garden Clearance
- Tree Felling • Stump Grinding
- Concrete bases laid • Sheds erected
- Turf Laying • Artificial Turf
- Driveways • Pressure Washing
- Garden machines serviced and repaired

**No obligation quotes**

**Contact Andy**

**01449 403050 077487 85197**

**wade.andrew63@gmail.com**

**YOUR LOCAL, INDEPENDENT BUILDING & AGRICULTURAL MERCHANT**

# CLARKES

[WWW.CLARKESOFWALSHAM.CO.UK](http://WWW.CLARKESOFWALSHAM.CO.UK)



SERVING TRADE  
AND PUBLIC  
SINCE 1908

# 01359 259 259

The Street, Walsham-le-Willows, Bury St Edmunds, IP31 3BA

ONLY  
**£10**  
DELIVERY  
OR FREE  
FOR ALL ORDERS  
OVER £100





## CITIZENS ADVICE

**I ordered a watch online for my partner's birthday. The company has since gone out of business. I keep phoning and emailing them but can't get through to anyone. If they don't send the watch, what should I do?**

If the company has gone into administration, it may still be able to fulfil outstanding orders, but if the company is already in liquidation, you'll need to try to get your money back. If you're unsure about what state the company is in, the Citizens Advice website has information on how to find out.

As the company hasn't responded to your calls or emails, is there a shop or office you can visit or write to, to get an update on your order or request a refund? If that isn't possible, the next steps depend on whether it's a limited company (it will have ltd or plc after its title) or if it's a sole trader (someone who runs their own business)

or partnership.

If it's a limited company, you'll need to get details of the administrator or receiver - the person dealing with settling the trader's debts. The names of those administrators will usually be on the website of the company that's gone bust. You should register your claim as a creditor on the GOV.UK website. Fill out the form with details of what you're owed and send it to the administrator dealing with the trader's debts. Unfortunately, there's only a small chance you'll receive any money back because you'll be last in a long list of creditors who need to be paid.

If you paid by credit card, you could also try getting your money back with a Section 75 claim to your card provider or bank. Full details about both these types of claims can be found on the Citizens Advice website. If the seller was a sole trader or partnership and not a limited company, pursuing a Section 75 is your best option.

Every case is different when traders go under, but you can call the Citizens Advice consumer helpline to find out exactly what your rights are on 0808 223 1133 or visit [www.citizensadvice.org.uk/consumer](http://www.citizensadvice.org.uk/consumer)

**Citizens Advice Mid Suffolk can provide advice on this and other issues, including debt, employment, benefits and family law. You can contact them on 01449 676060 or use the contact form at [midsuffolkcab.org.uk/contact-us](http://midsuffolkcab.org.uk/contact-us). More information and our opening hours can also be found at [midsuffolkcab.org.uk/contact-us](http://midsuffolkcab.org.uk/contact-us).**



Mid Suffolk



Our aim is to reduce the number of long-term empty properties within the districts by bringing empty properties back into use.

The Empty Homes team define a long-term Empty Home as a property that has been unoccupied for six months or longer and has nobody occupying it on a regular basis, whether it is furnished or not.

The government wants to increase the number of empty homes that are brought back into use, as a sustainable way of increasing the overall supply of housing, and to reduce blight on neighbourhoods. They want builders, investors, and local councils to increase the supply of repurposed empty homes.

Babergh and Mid Suffolk District Council have developed a branded identify, 'Houses 4 Homes' with an aim to improve the engagement with the Empty Homes service.

The focus of the team is to provide solutions and assistance, to encourage owners to engage with us and tackle empty homes effectively.

**Do you own an empty property that's been empty for six months or more?**

- Financial assistance
- Private lettings support
- Construction advice

**Don't leave it alone, make it a home**

**Houses for HOMES**

Supporting residents across Babergh and Mid Suffolk

[enquiries@houses4homes.org](mailto:enquiries@houses4homes.org)  
[www.houses4homes.org](http://www.houses4homes.org)

Mid Suffolk Working Together

**Wesley**  
ELMSWELL

**Cake & Clarinets**

Sunday 4th June  
1.00pm - 4.00pm

Coffee . cake, prosecco  
and the celebrated

**BLACKWOOD CLARINETS**

SEE THEM ON LINE - SAVE THE DATE

# R McKenzie

## Dry Cleaning & Alterations

Station Road Industrial Estate  
ELMSWELL - IP30 9HR

Tues to Fri 9.30am to 5pm - Sat 10am to 2pm



Pleased to be working with **Farthings** dry cleaners to provide a comprehensive dry-cleaning service.

07904074476

[rmckenziealterations@gmail.com](mailto:rmckenziealterations@gmail.com)

**SATURDAY 22ND APRIL**  
**11AM - 4PM**  
**SPRING FAIR**  
Wesley Hall  
11 School Road  
Elmswell  
IP30 9EE  
**FREE ENTRY**  
LOCAL AUTHORS  
LOCAL HANDMADE  
GIN MAKERS  
POTTERY MAKERS  
JEWELLERY MAKERS  
OLIVE OIL SKINCARE  
LOCAL ARTISTS  
CANDLE MAKERS  
SUSTAINABLE PRODUCTS  
GEMS & MORE  
**Earth Lover**  
SUPPORTING LOCAL SMALL BUSINESSES  
JOIN US ON EARTH DAY FOR OUR SECOND EARTH LOVER FAIR  
[www.earthlover.co.uk](http://www.earthlover.co.uk)

## Arboricultural & Landscaping Solutions

- All Aspects of Tree Surgery
- Soft & Hard Landscaping
- Maintenance & Lawn Care
- Fencing
- Domestic & Commercial
- Fully Insured
- NPTC Qualified

For more information please visit:  
[www.greenscenetreesurgery.co.uk](http://www.greenscenetreesurgery.co.uk)



# GREEN SCENE

PLEASE CONTACT US TODAY FOR FREE QUOTATIONS & ADVICE

Phone: 01359 298141 Mobile: 07866 866 880

Email: [greenscene@hotmail.co.uk](mailto:greenscene@hotmail.co.uk)

# ELMSWELL FOOTPATH WALK

## FOOTPATH WALK SUNDAY 19TH MARCH 2023

On a somewhat chilly spring Sunday morning a group of 9 assembled at Crown Mill play area for March's trip round the village's footpaths. Following the previous extended period of wet weather several pairs of wellies were also in attendance.

A left, right and another left took the party into Rose Lane for the start of the walk on FP17 leading on to Church Road and thence on to Spong Lane and FP16.

Past the houses in Spong Lane FP16 opens out into meadows, across an open field and on to a wooded path running south adjacent to the water treatment works and ultimately Kiln Lane.

To the right here lies Kiln Meadow with its wildlife pond all under the stewardship of the volunteers of Elmswold. It is encouraged that visitors have a stroll up to the area in June to enjoy the orchids.

Here we turned left heading towards Warren Lane. Following said period of wet weather Kiln Lane ditches were nearing capacity and in full spate.

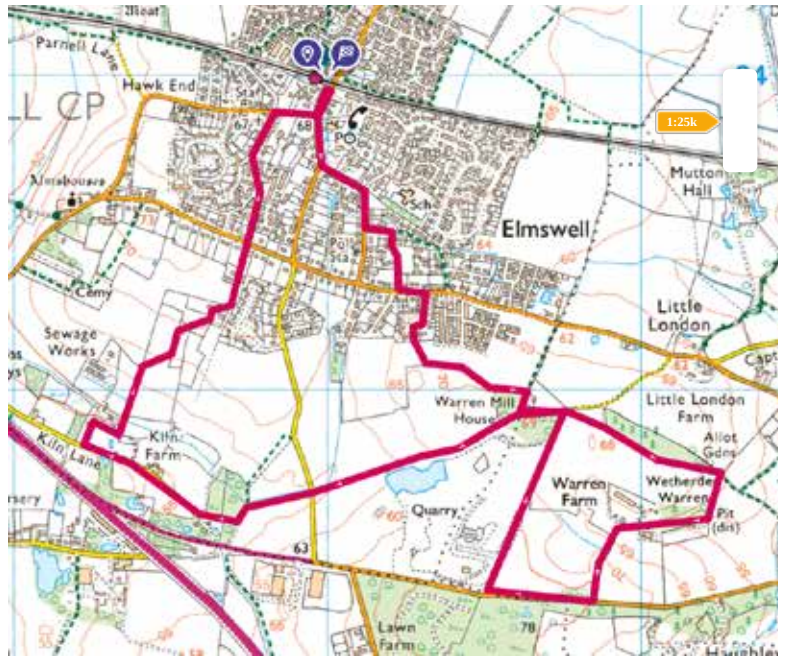
Crossing Warren Lane we progressed on to FP22, up the slope and on to the summit at Warren Mill House. Crossing into the Parish of Wetherden, a sharp right on to FP25 turned us south again alongside the quarry down to the old A14 where we turned left.

After 350m we turned left on to FP23 towards Warren Farm with the fields that accommodate Woolpit Steam on the right hand side. This year the rally will be on the 3rd and 4th of June.

A right turn took us up to a stile followed by a left hand turn up the slope to Wetherden Warren where FP23 becomes FP25A at the junction of footpaths where we turned left heading back towards Elmswell.

Revisiting Warren Hill House we turned right on to FP21, past the conifer plantation on the left hand side and then left at the rear of St John's Mead, on to Mill Gardens and Wethereden Road where we turned left..

A 100m later we turned right on to the footpath leading to the rear of Clayfield and here we had a stop to view the new tree planting undertaken by Elmswold at



the behest of Elmswell Parish Council to replace the trees removed which were causing nuisance to both the residents and UK Power Networks.

The waste Close, Cooks Road, The Street and Station Road then completed the walk.

A pleasant figure of eight route of approximately 4.5 miles in 1 hour 55 minutes (an average speed of 2.25 miles per hour) enjoyed by all.

*Peter Hancock, EPC Footpath Officer*

## WESLEY UKULELE BAND

We had a fairly busy March with a gig at a Care Home in Stowmarket followed a week later by one at a Community Hub the other side of town, very different events with one being quite subdued and the other being anything but although they were equally rewarding in their own way. Kevin tells us that we have raised a total of £6K so far and that his aim is to reach £10K by the end of the year. I have to say that it looks perfectly achievable from where I am standing. I really think we can do it. Our Thursday morning practice is well-attended these days with band members, families and friends making up the bulk of the custom.

As for next month, we start off with former drummer, David Gruenbaum's party, which would have been to celebrate his 92nd birthday, so don't forget that, if you knew him then you are invited. I will have to report on that next month. We follow that with two performances in Bury St Edmunds, one being a Care Home and the other a Café before we round off the month with a return to the Over 55's. The Folk Club is on the second Wednesday in April and I

hear that it may get 'rebranded'. And, as is widely known, anything worth it's salt gets rebranded these days!

*A couple of random shots of our Thursday practice sessions featuring various band members.*



**For information please call Kevin on 01359 240604 Or email: Kevin.Knock99@gmail.com**





All types of driveways  
 All types of patio's  
 including porcelain  
 Shed bases  
 Concrete Foundations  
 Mini Digger Hire

**Mobile: 07990 502354**

**Tel: 01359 250496**

*Find us on Facebook  
 GKW Groundworks*



**Independent  
 Financial  
 Advice**

**Offering personal and professional  
 advice for over 20 years**

We provide an easily accessible full financial planning service to clients in Suffolk. Your interests are at the heart of everything we do, and we aim to provide you with piece of mind and financial clarity. Together we can make your money work harder for you, in the most tax efficient way.

**We offer advice on all aspects of personal and corporate finance including: investments, pensions, inheritance tax mitigation, equity release and protection.**

**Call 01449 723526 or email dan@xlifa.co.uk to book your free initial consultation.**

*XL Independent Financial Advisers Limited are authorised and regulated by the Financial Conduct Authority [FCA]*

*Our FCA number is 415232.*

**TAKE BACK CONTROL AND  
 REDUCE YOUR ENERGY BILLS!**

**QUALITY PRODUCTS  
 IN STOCK TODAY!**

**SOLAR PANEL  
 & BATTERY  
 STORAGE SYSTEM**



**WHAT A SOLAR INSTALLATION  
 FROM ENVIROPLANET LOOKS LIKE**

**Pre installation**

- A renewable energy survey in your home
- Personalised quotation including a breakdown of costs, estimated PV performance and financial payback.
- Full technical survey for roof and electrics
- **RECC** compliant quotation and contract
- Schematic drawing of proposed system
- Deposit guarantee scheme

**During installation**

- **RECC** and **MCS** compliant installers
- Leading manufacturer products
- Insurance backed workmanship warranty

**Post installation**

- Handover pack within 7 days
- After sales care

Helping homes across  
 Suffolk, Essex & Norfolk  
 take control and reduce  
 their energy bills.



**ENVIROPLANET**

[www.enviroplanet.co.uk](http://www.enviroplanet.co.uk) 01473 599127 [info@enviroplanet.co.uk](mailto:info@enviroplanet.co.uk)

**Your green journey starts here...**

CONTACT US NOW for more info  
 or to book your FREE assessment.

## ELMSWELL FOX BOWLS CLUB

All the fixtures are in now so we now know exactly who we are playing. To be honest, it is very much the same as last year except that we will go to Gt Barton this year in addition to all the usual suspects from our Division 1 days. I don't remember playing against Gt Barton when we last played in Division 2 but perhaps they came down when we went up. We should find it considerably easier and may be in with a shot at the title, even though we know we are well off the Division 1 standard. We kick-off on April 18th so we will be opening the green a week or two beforehand to give us a chance to dust off the cobwebs. We usually have a friendly or two but I haven't heard anything this year so I can't be certain.

We will take to the green resplendent in our new shirts that Jenny Murray inspired, masterminded and then acquired for us and the Baker family's Quality Equipment company have offered to sponsor them for us, which is an enormous boost to the club. Their logo will be incorporated into the shirt

design and we will look very professional indeed. I had hoped to bring you pictures of the new shirt but we hit a small setback and it will have to be delayed a month, unfortunately.

This month's photos show Greenkeeper Dick Burch trimming the surround and Rob Dann lining up the mower for a cut. He is going corner to corner, which is standard procedure during the season.



Peter Edmonds, E.F.B.C.  
07860 395720  
edmondspeterj@gmail.com

## ELMSWELL CRICKET CLUB

### New Season 2023

Elmswell Cricket Club are looking for new players for the coming season.

The last few seasons has seen the club struggle to field a full team for every match and without new players the club will struggle to continue.

At the recent AGM it was decided to carry on this season with the existing committee and that new faces of all abilities are desperately needed to carry the club forward.

Elmswell Cricket Club is a friendly not too intense side with a desire to win but at the same time promote a good team spirit. So if you are looking for a way to embrace village life, this is a perfect way to do so.

The club has been in existence for 48 years and it would be wonderful to reach 50 years to honour all the characters past & present, who are mentioned on our Honours board.

Our 1st match is vs Haverhill away on 7th May but firstly we have a few Sunday afternoons available with Old Newton at Finborough School nets if anybody is interested 2-4pm (£5)

**For more information or details, please don't hesitate to contact our Club Captain - Ben Whatling on 07760 174811 or benwhatling@mail.com**



## THE BIG HEDGE PROJECT

You will have read of the new tree nursery at the library in last month's newsletter. The main reason it was created is for the Big Hedge project at Blackbourne. Planting will take place during National Tree Week this autumn, 25th Nov to 3 December, and many helpers will be needed. I'll be contacting all the community groups very soon to start the planning. I'm told that huge numbers helped to plant the existing hedge, so here's hoping for similar enthusiasm this time. After all, environmental concerns are even more pressing now. It's a great thing to get children involved in caring for nature.

*More news next time...*

'Spring in Your Step' is a Tree Council campaign to encourage people to get out, appreciate and celebrate local trees and wildlife in April. Look out for tree blossom, singing and nesting birds, early butterflies, and bees busy on spring flowers. There are many lovely local footpaths, or visit a Suffolk Wildlife Trust Reserve, or parks such as Ickworth or Nowton. Look closely at the little things, enjoy the freshness of Spring.

**NATIONAL TREE WEEK**



Janet Spencer, Tree Warden

The Parish Council meets at least once each month, excluding August, although extraordinary meetings can be called as required at any time. The March meeting with 9 councillors present, together with 3 members of the public and the Parish Clerk, Peter Dow, took place at Blackbourne on Monday 20th.

This report is compiled from that meeting by the Parish Clerk and edited by the Council's Editorial Board which comprises the Council Chairman, the Council Vice-chairman and Cllr Sue Roots, elected by her peers to join them. It seeks to cover some of the more interesting or significant items thought to deserve wider public attention. Included, where appropriate, are matters reported to the meeting by external bodies such as the County and District Council Ward Members or as raised at the meeting by members of the public. Further background and reference to subsequent events are included where relevant.

The Minutes of recent Parish Council meetings and Committee meetings, together with the agenda for the next meeting, when ratified, are available online at [elmswell.suffolk.cloud](https://elmswell.suffolk.cloud) and from the Parish Clerk by arrangement. Bound copies of older Minutes are lodged in the Village Archive at Blackbourne and with the Suffolk County Records Office in Bury St. Edmunds. The most recent Minutes from the February meeting, as approved at this meeting, are posted in the Council's notice board at Crown Mill.

## Mid Suffolk District Council

Cllrs Sarah Mansel & Helen Geake tabled a written report on BMSDC activities which confirmed that:

- At the recent full Council meeting the administration agreed an opposition group amendment to put aside £2M to help residents most in need with energy-saving measures. The MSDC council tax freeze was confirmed.
- The housing revenue account budget was also agreed, and this includes a 7% increase to council housing rents, just to try to keep pace with costs for some services soaring by almost 40% and to enable continued investment into repairs and maintenance.
- Both Babergh and Mid Suffolk have agreed to provide a total of £12M to improve the depot facilities. This is likely to end up with a single joint depot for the two councils. Currently the depots at Stowmarket, Sudbury and Gt Wenham are no longer fit for future purpose, and are unlikely to meet the needs of the Council and residents in the medium term.
- Gateway 14 was officially opened by representatives from Jaynic, MSDC and town and parish councils at the beginning of February. Gateway Boulevard, the main estate road is now complete. Hopefully the pedestrian and cycle links to the estate will be completed soon, and there will also be green corridors and high-quality landscaping to encourage biodiversity on the site.
- Babergh and Mid Suffolk are to be part of a Government pilot project which aims to get more communities shaping the places they live with a new approach to planning. People and Place Plans are simpler than full Neighbourhood Plans and should be a more accessible way to highlight local planning priorities.

- A meeting with both SCC and MSDC officers regarding the continuation of the shared path from School Road to A1088 was held last week. SCC Highways had drawn up plans and surveys of the proposed route. They prefer the option of going in front of the church, involving some realignment of the steps to the churchyard as the gradients are easier to deal with. We were not happy with the proximity of the new path to the highway near the roundabout, so requested that if there was insufficient space to have separation, it was preferable to narrow the path in this area. Progress does seem to be happening and there was hope that a bid for CIL funding would be forthcoming in May.
- The local elections are taking place on 4th May. The full election time table has now been published <https://www.midsuffolk.gov.uk/elections/current-elections/>. This year for the first time voters will need to bring photographic ID when they attend a polling station to vote. Details of the types of ID which are acceptable can be found at <https://www.babergh.gov.uk/elections/voter-id/>. Residents who do not have any form of acceptable ID need to apply for a Voter Authority Certificate or they can apply for a postal vote.
- MSDC are running sessions in local libraries to help people get online and to develop their digital skills. More information is available on the website <https://www.babergh.gov.uk/the-council/digital-journey/digital-skills-events> or you can phone 0300 1234 000 (Option 7).

## Clerk's Report

The Clerk's Report to the Meeting included the following:

1. I have met with the developer Matthew Homes on site regarding the line of the fencing they have agreed to provide

around the perimeter of the village's newly acquired 6 acres at Blackbourne. We have agreed the detail of the installation and their contractors will soon be on site to install as specified. Meanwhile, vehicular access has been made into the new area from the existing Blackbourne field and Wayne & Craig Jarvis have begun to drop around the new perimeter heaps of wood chippings to be used as mulch for the hedge planting proposed for the autumn.

2. The 3 trees at Clayfield which were causing a nuisance to households in Thedwastre Close and fouling electricity supply cables have been removed and replaced by 9 more appropriately sited specimens as advised by our Tree warden Janet Spencer. I received a thank-you from one of the households affected who considered that we are a council that gets things done!
3. Along with Cllr Pallett I met on 15th March with Vanessa Adu of John Sisk & Son Ltd, the major contractor on the A14 Concrete Roads Scheme. There seems to be a genuine spirit of listening and liaison which should ease the way through the contract period until summer 2024. We have direct contact in case of any problems, having highlighted particular issues with potential HGV infringements in Warren Lane. The Police have agreed to deal directly and swiftly with offenders and the contractor is looking to take space monthly in the Elmswell Newsletter to keep the community on side. A further public consultation on the works is scheduled for Friday 31st March from 11.00am – 4.00pm at Wesley.
4. We had budgeted for £5,000.00 street lighting power and maintenance having anticipated that the savings from lower energy units would balance any reasonable inflationary

uplift. However, circumstances have changed dramatically across the energy sector and the cost is now assessed at £8,600.00. This is covered by Council's Contingency Reserve.

5. Babergh / Mid Suffolk are consulting on the Joint Local Plan Modifications as required by the Inspector following the first-pass Examination which threw up problems regarding site allocations. I am scheduled to join an on-line meeting at the end of the month to ascertain whether or not it is appropriate for EPC to have further input.
6. I was unable to attend the scheduled meeting re the Elmswell-Woolpit community path on 7th March. My thanks to Cllr Brown who stood in and reports that progress remains, as before, slow and episodic with the 2 major problems of crossing A10888 and over A14 as the next big issues.
7. An offer has been accepted, within the terms unanimously agreed at the February meeting, for the plot of land at Rose Lane to serve as car parking for Wesley. Both sides have instructed solicitors and due process is under way.
8. The Council's Appeal re the footbridge site at Crown Mill has now been allocated to a Planning Inspector who will adjudicate in due course.

### Recycling grant

The Trefoil Guild were thanked for their excellent stewardship of the Council's recycling facility at Station Road for the 3 months to 25th November and a grant of £150.00 was made to the Guild's funds. Village clubs and organisations are invited to apply to carry out a similar 3 month stint of daily attendance to ensure that the bottle, paper and clothing banks are in a clean and tidy

condition and Council invariably makes a donation to the funds of the volunteer body.

### Planning results

The Meeting noted the following results of Planning applications made to Mid Suffolk, the Planning Authority: DC/21/06333 Petrol filling station. Land Off A14 REFUSED EPC Objected DC/22/06230 1 no dwelling & alterations, Land North of Dagwood Farm REFUSED EPC Objected DC/20/01677 Discharge of conditions... Land to West of the Former Bacon Factory APPROVED EPC No comment DC/22/06355 Discharge of conditions Condition 3...Land off School Road, Bloor Homes APPROVED EPC No comment

### Planning Applications

The Meeting supported an application for extensions and the incorporation of the garage into additional living space at Sunridge in Cooks Road and did not comment on the technical proposals for changes in the sound attenuating fenestration to houses near the railway line on the emerging School Road development.

### Plans for Elmswell Tavern

It was agreed that David Magnani of Donani Design, Beyton, be engaged to provide Architectural Technician services re the proposed refurbishment of the Elmswell Tavern from CAD-generated initial concept designs through Planning Application & Building Regulation Application drawings to construction drawings and all necessary CDM documentation within a budget of £4,550.00. This is within the agreed budget and forms part of the works towards refurbishment of the building prior to a lease agreement with the Elmswell Community Enterprise Group which will, on transfer of responsibilities, assume liability for accrued setting-up

costs such as this for repayment to the Council in due course.

### Affordable Housing

The Chairman confirmed that no progress can be made in working with Elmswell Community Land Trust towards the provision of affordable housing on the Parish Council's site at School Road behind the Elmswell Tavern unless and until MSDC deal with the referral back to Cabinet of their own proposal for 50 such units on their land at School Road. It was suggested that the 2 schemes could not co-exist and generally accepted by those present that the lack of progress was in no way due to failings on the part of EPC.

### Next meeting

It was noted that the next Ordinary Meeting was scheduled for Monday 17th April beginning at 7.30pm at Blackbourne. The public are, as ever, welcome to attend all Council meetings and the agendas will always offer opportunities for questions and comment. Agendas are published online at [elmswell.suffolk.cloud](http://elmswell.suffolk.cloud) and on the Council's notice board at Crown Mill and hard copies can be collected from the Council Office at Blackbourne.



### Future Council Meetings

Notice of all meetings and agendas is posted on the Council's notice board at Crown Mill and in the community notice board at the Co-op.

Apr	May	June	July	Sept
17th	15th	19th	17th	

Meetings are held at Blackbourne, beginning at 7.30 unless otherwise notified

Enquiries on any Parish Council matter are invited to the Clerk, Peter Dow, at The Council Office, Blackbourne, Blackbourne Road, IP30 9UH – right next to the car park and with wheelchair access.

Staffed Monday, Tuesday & Wednesday 9.00am-4.00pm

Thursday & Friday 9.00am – 12.00noon

And other times by arrangement

[clerk@elmswell.suffolk.gov.uk](mailto:clerk@elmswell.suffolk.gov.uk)

Tel. 244134 [www.elmswell.suffolk.cloud](http://www.elmswell.suffolk.cloud)



# PARISH COUNCIL ELECTIONS

## Thursday May 4th

As in previous elections, your Newsletter has invited all candidates to submit a 300 word piece supporting their bid to be elected.

The responses are printed here, unedited and with a thumbnail picture if one was included.

This is not necessarily all of the candidates – only those who took up the offer of making themselves known through the magazine.



### DAVID BARKER

I have lived in Elmswell for 35 years, have served on the Amenities Association for most of that time and as a parish councillor for 28 years since 1991. As a solicitor, now retired, I have been pleased to make a contribution during these very formative years when Elmswell has grown beyond recognition. Having held various offices on the Council, including Chairman for 15 years, I am proud to have been part of the very effective initiatives at Blackbourne, at Lukeswood, at Wesley and, currently, at the Greene King site on School Road, which have meant that our village has retained a sense of community and that we have been able to include so many of our new neighbours in our clubs and societies as well as expanding into new areas such as at Wesley.

The development pressure is not going to lessen. It is beyond our control. However, if the spirit, the skills and the volunteer efforts which have served us so well over recent years can be reflected in another 4 years of Parish Council administration, I believe that we can continue to have a community that grows and remains supportive despite our size. I would be pleased to have your support in helping me to remain as a contributor to the on-going drive to keep Elmswell as a lively, thriving, functional community.

The list of Persons Nominated was published on the Mid Suffolk District Council website on 5<sup>th</sup> April and posted on the Parish Council notice board.



### DAVID BROWN

I have lived in Elmswell for nearly 10 years with my wife, Rosie.

I am a retired Chartered Civil Engineer and a Fellow of the Institution of Civil Engineers.

Since being co-opted on to the Parish Council on 20th September 2021 I have been pleased to be able to put my experience, skills and qualifications to use in various community projects the Council has been involved with.

I have been able to advise on the re-engineering of the drainage from the new housing estate through the village's new land at Blackbourne. I have also been able to help in the technical discussions towards delivering the Elmswell – Woolpit community path to provide a cycle route / footpath linking the two villages.

I am well placed to contribute to discussions around planning matters, particularly with regard to highway safety and some of the more technical engineering considerations.

I have been pleased to take on some of the monitoring and analysis of the digital readouts from the village Speed Indicator Devices, which in turn encourages our road safety initiatives and the current discussions with SCC Highways for road safety improvements in Elmswell. I have attended District Council planning hearings to present the Parish Council position.

Most recently, I have been keen to be able to give hands-on support to the team managing the running of and the refurbishment of the Elmswell Tavern which I see as a logical extension of the excellent facilities already on offer at Wesley.

If elected, I shall continue to support the Parish Council objectives of providing community facilities that help us deal with the inevitable continued growth of the village.

If there are more people seeking election than the 11 places available then there will be a poll when votes are cast either at Wesley or at Blackbourne depending on whether you live north or south of the railway line.



### MICHAEL RICHARD BURCH [KNOW BY ALL AS DICK]

I am honoured to have represented the people of Elmswell as a Parish Councillor for over 31 years and will be standing again in the upcoming election.

I have witnessed enormous changes to our village, not all of them for the better, but I have always tried my best to represent you but at times my best has not been good enough in the face of overwhelming opposition from within.

For those who are new to our village, and I have not had the pleasure to meet here is a brief history of my life in Elmswell, the place that I love.

Elmswell born on leaving school I started work at Ivy House Farm where after almost 47 years employment I was proud to receive a long service award from Anne, Princess Royal.

At 17 years I volunteered to help build the old Village Memorial Hall and I have over many years tended the cricket fields, the football pitches and bowling greens.

As a Parish Councillor I have sat on numerous committees and helped with everything from litter picks to arranging village walks.

There is still more to do.

If elected, I intend to campaign for the 8 affordable rented houses on the Tavern site promised by our Parish Council which has been ignored in favour of developing the Tavern where, in my view, without full village approval they have spent an amount nearing six figures of **your** money which increases daily.

I am against the sale Crown Mill green space for housing, again funding the Tavern project.

Finally, I am concerned by the increase in village traffic and its speed plus excessive delays at the railway crossing.

Vote for me your truly local candidate.





### PETER HANCOCK

Sue and I have been in the village some 10 years since building our bungalow in Jubilee Terrace.

I retired in 2015 from a career as a Chartered Quantity Surveyor and not too long after that started part time employment with Elmswell Parish Council as the inaugural Village Warden and could be seen around the village pushing the barrow or on my bike with trailer on the way to do the necessary.

After a couple of years I was tempted back into part time employment in my given profession and gave up my job as Village Warden to become a Parish Councillor.

During my time as a Councillor I have been able to use my work skills in construction, cost management and contractual matters to assist the Parish Council in construction projects such as the recent extensions to the Blackbourne, the refurbishment and extension of the Wesley and towards planning the refurbishment of the Elmswell Tavern as a community pub.

I have also taken on the role of Footpath Officer following in the steps of the stalwart Dick Burch and I lead the monthly village footpath walks which are now featured in the Elmswell Newsletter to encourage more people, particularly our newer neighbours, to get out and about the village. Everybody welcome!

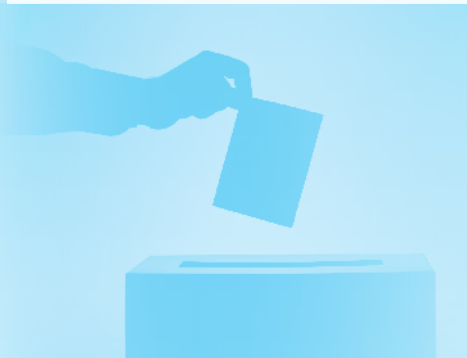
I have recently been involved with ongoing works at the allotments with the extension of the water supplies, road repairs and additional car parking. Should you take a stroll through Lukeswood and the green cemetery you will most likely see me toiling away on my allotment adjacent to the footpath.

I have enjoyed my term as Councillor and like to think I have made a positive contribution to the village. I would be more than happy to continue and would welcome your support.



### DAVID HAWES

Once again it is time for the election of a new Parish Council, it is important that Councillors are elected rather than co-opted, not a criticism of the current co-opted members. It is the opportunity for all parishioners to stand for election and if elected express their views, and vote accordingly. I am standing again as I wish to see the excellent work that has been carried out over the last few years continued, we now have the excellent and very successful Wesley facility, the ongoing Tavern project with the proposed Community Pub is progressing, and the fulfilment of the aim of providing genuinely affordable housing for local residents. With the inevitable growth in our village population, we must do our best to make the village a good place to live in.



### SARAH MANSEL

I have enjoyed living in Elmswell with my family for over 25 years. I have been representing the Elmswell residents as a district councillor for the last 12 years and have been on the parish council for 4 years.

My experience as a district councillor has given me a greater understanding of planning and housing matters, which means I can make valued contributions to these aspects of parish council matters. I have a background in science education and currently work as an assessment specialist for an examination board.

I wish to make the local community a better place for the future, respecting both environmental and social aspects of sustainability. I am passionate about active travel and many of you may have seen me cycling and/or running around the village.

Elmswell is a thriving and active village and we need to ensure that its amenities and facilities keep pace of the growing population in this ever-changing world of the 21st Century. It is a fantastic place to live and we need to keep it that way with enthusiastic parish councillors who have an eye on the future, so I hope that you will be able to vote for me to remain on Elmswell Parish Council for the next 4 years.



### FRED PALLETT

I moved to Elmswell some 10 years ago after having lived in Fornham St Martin for 30 years. On the part of both my wife and myself it was undoubtedly our first choice of Suffolk Villages in which to live, and this has since proved to be a wise decision. I am married with a son, daughter and 4 grandchildren

Originally from London, where I trained and worked as a mechanical design engineer, since moving to Suffolk I have held positions as Managing Director and Commercial/ Projects Director with energy related companies in the region employing up to 200 personnel, until recently managing my own business consultancy and property development company here in Elmswell, providing services to major global energy projects. I have 50 years' unblemished experience of business management, commercial and contracts functions along with team working.

I was first elected to Elmswell Parish Council some 9 years ago and have held the position of Chairman for the last 8 years, during which time I have brought to Council decision making my business industry experience. It has been a very busy and rewarding time, during which time many projects and initiatives have come to fruition for the benefit of the village.

I have been part of many delegated council sub groups that have successfully delivered great new & existing facility improvements, along with identifying future projects that make our village such a good place to live. Just to name one, the Wesley. With council colleagues we successfully negotiated the purchase of the site and managed the subsequent new build & renovations, value £1.25m, within budget and on time, to give the village a class leading facility.

Hopefully I will be re elected to council enabling continuity of our good work for Elmswell.



### SUE ROOTS

I have lived in Elmswell for over 30 years and served on the Parish Council since 2019. In that time, I have seen the village grow and develop and have encountered a steep learning curve being part of the efforts to deal with the current development pressures.

I supported the purchase of land at the Wesley to improve and develop the site into the flourishing facility we have today. I am keen to extend this with the purchase of the Tavern site to develop the community pub and affordable housing for the village.

My background is in education so of particular interest is the debate around school provision in the area. It is vital that we have local schooling that is fit for purpose and I feel I can bring my experience to these discussions.

We need to keep the elements of Elmswell that make it such an attractive area at the same time as looking to the future by managing developers' hunger for sites and providing additional facilities for its inhabitants.

I would appreciate your support in these endeavours.



### MIKE SCHOFIELD

Hello. I have been a Parish Councillor in Elmswell since 1999 during two separate stints and for the last 2 years have also been Treasurer of St John's Church. I am the church's representative on the Amenities Association. I help run and organise the food bank in the village, in particular, helping to secure funds for its continued existence. I have just completed a trek up Snowdon in North Wales which will raise at least £1,500 to help this vital work to carry on.

I am semi-retired, working from home for a local IT services company as a qualified Data Protection Officer and had previous careers as an NHS manager at West Suffolk and other hospitals and then as a teacher, being Head of Business Studies at an Ipswich secondary school before taking early retirement in 2014.

I have lived in Elmswell since 1986, so am nearly a local, am widowed and have two adult children, one of whom lives with me and works locally as a qualified chef. I have now recovered fully from an episode of Lymphoma (a blood cancer) and can appreciate what it is like to need the assistance of others, especially local agencies.

Whilst on the Parish Council I have taken an interest in the neighbourhood plan process in particular and will always question proposals put forward for discussion. I am not afraid to take a dissenting view from the majority should I feel strongly about an issue and will continue to question proposals as I see fit whilst offering wholehearted support and assistance to those I believe to be of benefit to the village.



### PHILIP SHAW

Born in Bradford, via Nottingham, Manchester, and Oxfordshire, I arrived in Elmswell with my family in 1987 upon appointment as Suffolk County Council's Senior County Music Adviser. At that time my role also included pastoral responsibility for a group of primary, middle, and secondary schools, including our own Elmswell Primary School. Thirty-six years later we are still here, and in the same house. Eventual professional retirement came in late 2017 from what was by then Head of Suffolk County Music Service, a free-standing traded service within SCC with a budgeted expenditure of c£3m. I was responsible and accountable for its strategic leadership and management, policy, personnel, and finance. Retirement at last gave me time to pursue and develop personal interests and I was elected as a Parish Councillor in 2019, now also having significant involvement with Elmswell Amenities Association, Blackbourne and Wesley Management Association and, most recently as a founder-member of both the Elmswell Community Enterprise and Elmswell Community Land Trust. As a musician - performer, teacher, and manager - throughout my professional life I have served variously as Member, Convener, Membership Secretary, and Finance Director of several national strategic organisations leading and representing Music Education. A former Managing Director of a Community Arts Centre earlier in my career, I led its Board in managing premises, finance, staffing, programming, and licencing. I am a Fellow of the Royal Society of Arts (FRSA) and was awarded an OBE in the Queen's Birthday Honours (2005). In recent years Elmswell has been subject to huge change. Throughout the Parish Council's role has been to influence, mitigate, and manage these changes to secure the best possible outcomes for our expanding community. It has been a great privilege being part of this work and I seek your support to continue as a Parish Councillor.



**There will certainly be a poll for the District Council**



## DISTRICT & PARISH COUNCIL ELECTIONS

**- THURSDAY MAY 4<sup>th</sup>**

**For the first time in the UK you will need to have photo ID with you when you go to vote - driving licence, bus pass etc. will do. The Electoral Commission website has full details, or contact the Parish Clerk's Office with any queries.**

# What's On in Elmswell ?



To be included in our events diary make sure you send separate notification of your announcement.

For a full year's calendar of what's booked at Blackbourne, please go to the Parish Council website at [www.elmswell.suffolk.gov.uk](http://www.elmswell.suffolk.gov.uk) - it might help you in planning dates for your events.

## April 2023

- 3 2pm Ladies Friendship Group at Elmswell Baptist Church. Lisa Jones on "Savvy Shopping".
- 5 Exchange WI Claire's House - finger pottery craft afternoon 2.00pm at Wesley
- 11 WI at Wesley 7.30 Martyn Roper The History of Cartoons
- 13 Elmswell History Group 23rd Anniversary meeting, 7.30pm; in Wesley Chapel. Speaker Miriam Stead: Halesworth's 17th Century 'Walpole Old Chapel'
- 13 Food 'n' Friends at Elmswell Baptist Church midday
- 13 Over 55's Club Bingo
- 18 ELMSWELL GARDEN CLUB, 7.30pm in Wesley Chapel. Speaker - Saffron Summerfield 'When Birds Sing
- 27 Over 55's Club Wesley Ukulele Band (visitors welcome)
- 28 Bingo at Blackbourne doors open 6.30 eyes down 7.30

## May 2023

- 4 Election day. Polling at Wesley and Blackbourne 7am - 10.00pm - photo ID required
- 9 WI at Wesley 7.30 Annual Meeting
- 11 Over 55's Club music by Bob Whiting (open evening)
- 11 Food 'n' Friends at Elmswell Baptist Church midday
- 11 Elmswell History Group, 7.30pm; in Wesley Chapel. Movie Screening of Holly Brega's film "Land Girls & Horses of Suffolk"
- 16 ELMSWELL GARDEN CLUB, 7.30pm in Wesley Chapel. Speaker - Nigel Start 'Climate Change - a survival guide for gardens in East Anglia'
- 25 Over 55's Club Outing Carvery + Boat Trip TBA
- 26 Bingo at Blackbourne doors open 6.30 eyes down 7.30

## June 2023

- 8 Elmswell History Group AGM at 7pm, in Wesley Chapel - immediately followed at 7.30pm by Speaker Andrew Peachey: Pre-historic, Roman & Saxon Archaeology on Anglia One's Cable Route
- 8 Food 'n' Friends at Elmswell Baptist Church midday
- 13 WI at Wesley 7.30 Lewis Turner - A Year in Beekeeping
- 20 Evening visit to Mickfield Nursery  
NB: No meeting in the Wesley chapel

## July 2023

- 13 Food 'n' Friends at Elmswell Baptist Church midday
- 13 Elmswell History Group Annual Outing - to be confirmed. Details and Tickets from 01359-242601
- 18 ELMSWELL GARDEN CLUB, Outing - TBA
- 28 Bingo at Blackbourne doors open 6.30 eyes down 7.30

## STOP PRESS

Regular sessions at Blackbourne & Wesley include:

- KARATE** with Lewis - Tuesday 4.30 - 5.45 / Friday 5.00 - 7.00 [info@greatheadma.com](mailto:info@greatheadma.com)
  - JAPANESE JUJUTSU / SELF DEFENCE** - Monday & Wednesday 6.30 - 8.30 [ryoishintowaryuheiho@gmail.com](mailto:ryoishintowaryuheiho@gmail.com) tel. 07711 680262
  - BABY & TODDLER GROUP** - Monday mornings [elmswellbtgroup@gmail.com](mailto:elmswellbtgroup@gmail.com)
  - BATS- badminton / table tennis / pool** at Blackbourne Friday nights 7 - 9.30 [simon@coakleyandtheaker.co.uk](mailto:simon@coakleyandtheaker.co.uk)
  - BOWLS** - [barryhayward1902@gmail.com](mailto:barryhayward1902@gmail.com) tel. 240951
  - GUIDES** - [elmswellguides@outlook.com](mailto:elmswellguides@outlook.com)
  - FOOTBALL** - [shaun.pratt@btinternet.com](mailto:shaun.pratt@btinternet.com) 07494 864231
  - RAINBOWS** - [elmswellrainbows@yahoo.com](mailto:elmswellrainbows@yahoo.com)
  - JUNIOR FOOTBALL** - [smyth98@hotmail.com](mailto:smyth98@hotmail.com) 07717 841591
  - CUBS** Tuesdays 6.15 - 7.30 - [claremariekeefe@gmail.com](mailto:claremariekeefe@gmail.com)
  - BEAVERS /SCOUTS** - Wednesday 5.45 - 9.15 [ddc.paula@stowmarketscouts.org.uk](mailto:ddc.paula@stowmarketscouts.org.uk)
  - OVER 55'S** - every other Thursday 6.30 - 10.30 Diann Armstrong tel. 241002
  - CIRCLE DANCING** - Thursdays 1.45 - 3.15 [jenlerner@gmail.com](mailto:jenlerner@gmail.com)
  - TREFOIL GUILD** - 1st Tuesday monthly [lesley.grout@btinternet.com](mailto:lesley.grout@btinternet.com)
  - MARDLE QUILTERS** - last Friday monthly [carpajak@aol.com](mailto:carpajak@aol.com)
  - MOO MUSIC** - Fridays 12.45 - 3.15 [bury@moo-music.co.uk](http://bury@moo-music.co.uk)
  - WI** - evening at Wesley 2nd Tuesday monthly 7.30pm Terry Byford [bbazby@aol.com](mailto:bbazby@aol.com)
  - WI** - afternoon at Wesley 1st Wednesday monthly Carol Blissett [carolblissett@hotmail.co.uk](mailto:carolblissett@hotmail.co.uk)
  - ART CLUB** at Wesley every Tuesday 9.00 - 12.00 John Welford [welford955@btinternet.com](mailto:welford955@btinternet.com)
  - HISTORY GROUP** at Wesley 2nd Thursday monthly 7.30 [stellachamberlin@yahoo.co.uk](mailto:stellachamberlin@yahoo.co.uk)
  - GARDEN CLUB** at Wesley 3rd Tuesday monthly 7.30 [elmswellgardenclub@gmail.com](mailto:elmswellgardenclub@gmail.com)
  - CARPET BOWLS** - Wednesday 7pm at Wesley - [jf.boxall@btinternet.com](mailto:jf.boxall@btinternet.com)
  - COMPANIONS** - every other Friday 10 - 12 at Wesley - [linda@abbott.plus.com](mailto:linda@abbott.plus.com)
  - PILATES** - Monday & Friday mornings - [suzanne@triformpilates.co.uk](mailto:suzanne@triformpilates.co.uk)
  - BINGO** - Blackbourne, last Friday monthly doors open 6.30...eyes - down 7.30
  - ARTS SOCIETY OF WEST SUFFOLK** first Tuesday monthly, October-June [theartsociety-westsuffolk.org.uk](http://theartsociety-westsuffolk.org.uk)
- If we've missed you out, do let us know...all enquiries to Ann at the Council Office Tel. 244134 Email [clerk@elmswell.suffolk.gov.uk](mailto:clerk@elmswell.suffolk.gov.uk)

## Your Newsletter Fact File

For the next 3 months we need copy by: April 25th, May 23rd, June 27th

Contact us on **01359 244 134** for all Amenities Association business, Newsletter and adverts.

Our new email address is [EAA@elmswell.org.uk](mailto:EAA@elmswell.org.uk) Your editors: Jean Barker, Maggie Bushell, Peter Dow

Published on the first Friday of every month by the Elmswell Amenities Association

Reg. Charity No. 304879. 2,000+ copies delivered free to households and to businesses in the community. A volunteer enterprise entirely supported by advertising.

PLEASE SUPPORT OUR ADVERTISERS



BULBS - ALTERNATORS - SHOCK ABSORBERS - COIL SPRINGS - WHEEL ALIGNMENT - REPAIRS - MOT PREP - WHEEL BALANCING - PUNCTURE REPAIRS

KEY BATTERY REPLACEMENT - STARTER MOTORS - SPARK PLUGS - ELECTRICAL FAULTS - AIR BAG FAULTS - ENGINE MANAGEMENT LIGHTS - TPMS RESET

# PROMECH

## We cater for ALL your vehicle needs

**SERVICING**  
ProMech Elmswell

**MOT CENTRE**  
ProMech Elmswell

**REPAIRS**  
ProMech Elmswell

**DIAGNOSTICS**  
ProMech Elmswell

**EXHAUSTS**  
ProMech Elmswell

**TYRES**  
ProMech Elmswell

**SUSPENSION**  
ProMech Elmswell

**TRACKING**  
ProMech Elmswell

**CLUTCHES**  
ProMech Elmswell

**BRAKES**  
ProMech Elmswell

**BATTERIES**  
ProMech Elmswell

**AIR CON REGAS**  
ProMech Elmswell

**RECOVERY**  
ProMech Elmswell

**COURTESY CARS**  
ProMech Elmswell

**CAMBELT/ CHAIN REPLACEMENT**  
ProMech Elmswell



**MOT ONLY £25\***

WHEN YOU BUY ANY INTERIM, FULL OR MAJOR SERVICE

Class 4 MOT only. Conditions apply. \*Valid from 01.04.2023—30.04.2023

# 01359 242420

Find us at: Station Road Industrial Estate, Elmswell, IP30 9HR

Printed by PFP Print 01473 652354