

'Like a friend dropping in'



The Elmswell Newsletter



More than thirty years of Parish Record... all the Community News...

AUGUST 2024

On line at elmswell.suffolk.cloud



A toast from the Baby & Toddler Group

...see page 23

Published on the first Friday of every month by the Elmswell Amenities Association Reg. Charity No. 304879. 2500 copies delivered free to households and to businesses in the community. A volunteer enterprise entirely supported by advertising.

PLEASE SUPPORT OUR ADVERTISERS

EAA@elmswell.org.uk



Our editorial is designed to inform and to encourage debate.

If you wish to comment, please do so via the office or by email at; eaa@elmswell.org.uk

We reserve the right to edit any such contributions that we may use in a subsequent edition.

Some words translate differently depending on where you live. Some commonly used words don't translate at all between different communities. There may, for example, be some mild confusion on 17th August when one of our local football teams, having won more games last season than some other football teams, is pitted this coming season against what are considered, generally, to be rather better football teams.

And, when Ipswich Town hosts Liverpool FC for the first time since 2002, our county town may, typically, hear the following exchange of welcome:



Local supporter: "Now then, 'bor", using the companionable diminutive of, 'neighbour'.

Merseysider: "Ello, La," using an equally unthreatening short version of, 'lad', with the possible alternative of, "Ello our kid" implying, unaccountably, kinship.

Google translate may help.

Another word which might mean different things to the two factions is, 'bus'. In our big cities buses are the backbone of community transport. They are frequent. They run day and night. They take all forms of payment. They tell the next bus stop when they are approaching and warn all the bus stops on their route if they are cancelled / too full / got lost. They talk to individual passengers directly via their 'phones. In London, for example, they can do this by virtue of a subsidy of £2bn each year – ill gotten gains, perhaps?

In rural areas things are rather different. It sometimes feels as though no-one in the big cities has noticed that our population is rather spread out, that our roads are a bit narrow, somewhat overgrown and wibbly-wobbly and that it can be a long way to the health centre.

There is only a vague awareness that we bumpkins might need a helping hand in terms of getting about since the decline of the hay wain.

Recent funding through the Government's 'Bus Service Improvement Plan' (BSIP) has been up for grabs. Literally, 'up for grabs', because local authorities had to bid for it, dog eat dog.

In this instance, size matters. In practice, those who need most support are the smaller players, like Suffolk, who lack the expert transport teams to put together an all singing & dancing business case. Another example of the biblical suggestion that, to those that already have more will be given and from those that have not will be taken even that which they had. We are slipping further behind.

Nevertheless, sleepy Suffolk has finally won a share of BSIP- £3.6m over 2 years. This has been spread across the county, including £12,000 to Elmswell where our groundbreaking taxi-bus scheme can continue to develop its piloting of a twice-weekly community-based service into Bury. Other innovations are supported, but with £450,000 going directly to existing commercial bus operators, it is clear that the 97 horsepower Suffolk Omnibus remains the favoured way to provide public transport on our roads. We have even

gained a couple of, 'interactive stops', at Shop Corner where the tech-savvy can track their bus.

But, back, if we may, to our opening suggestion that the word 'BUS' can mean different things to different people. If the word is taken to mean, "a big diesel-engined vehicle chugging sootily from village to village through our tortuously winding by-ways in the hope of sticking to a timetable and collecting a few patient folk to take their pick of the 58 available seats to get to Bury just in time for a coffee before coming home", then it has a limited future, even with interactive bus stops.



If, however, 'BUS' is taken to mean, 'shared transport', there are sufficient good ideas about to suggest a rather more hopeful set of options than forcing more and more of us to rely on our own private car to get about.

It is the method of sharing which might make the difference. If the passenger has to agree to share by fitting in to a time and place of the bus operator's choice it might be – and usually is – preferable to hop in the car and drive directly from your house at a time that suits you.

If, however, an individual's choice of time and destination can be paired up with those of another individual, then we begin to have a possibility of persuading people away from the current one car, one person per journey norm. It could be as simple as car sharing or as complex as some of the rural transport schemes already succeeding and growing elsewhere.

The key, clearly, is having the organisational ability to match people, journey, time and vehicle.

We might need to employ, in order to service our patch, perhaps several dozen co-ordinators each with a telephone, calculator, pencil and paper in constant touch with a few drivers in mini-buses spread about the place.

With all of this in place, we can imagine being able to collect George and Jemima in an electric mini-bus from 2 different Elmswell addresses, dropping George off at the Health Centre in Woolpit where we pick up Janet, John and Jessica to head, via Beyton where Jack joins us to head via West Suffolk Hospital (John and Jemima alight), collecting Judy who's going back to Thurston, and on to Abbey Gardens where everyone gets off except Judy and where 3 people join for a run back to Stowmarket via Rougham.

But imagine also the amount of paper used to work that lot out; the phone calls to arrange and re-arrange and the problems caused in making notes from the 'phone when all the names begin with J. Except George who wasn't with us long.

And then imagine how quickly and easily this rats-nest of times, people and places could be sorted out by the sort of App that allows Amazon to deliver from a stock of millions of items on the day after the order is placed. Or the sort of App that allows Uber to have a taxi or a meal to your door within half an hour of your asking. There's the BT App that will, untouched by human hand, take your complaint, analyse the fault and instruct an engineer.

The 'BUS' version is called DRT – Demand Responsive Transport. Our Elmswell / Thurston / Woolpit / Beyton taxi-bus is a tiny step in the right direction. There are many examples of DRT being developed locally and beyond – search Connecting Communities, Suffolk Links, Katch, Buzzabout, CATS, DaRT. There are more.

If these initiatives can benefit from being community led (think Wesley), stripping out the need for profit or for shareholder returns they might help change our mental picture when we see the word 'BUS'. More importantly they might change our travel habits and give the planet a bit more of a chance to last a bit longer.



ELMSWELL ART CLUB

At the end of July, a group of our members gathered at the Blackbourne to carry out some much-needed refurbishment work on our display boards in preparation for our upcoming Art Show & Sale which takes place next month.

In total we had to prepare and re-paint ten 8ft x 4ft boards and four 4ft x 4ft boards to display our paintings at September's show



Refurbishment Team in action

As you can see from the above photo, everybody contributed to the work, producing excellent results; as shown in the following before and after photographs;



Before



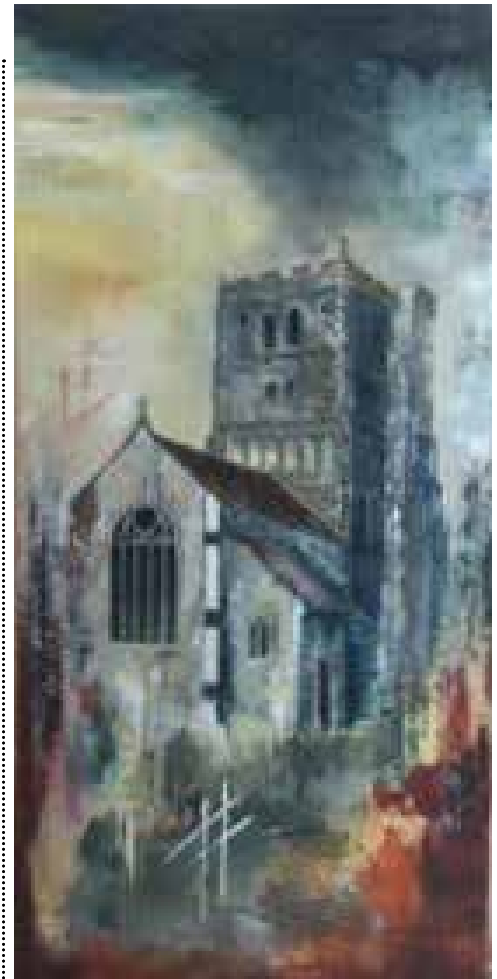
After

Our team did a brilliant job and we must say a special thanks to the Parish Clerk and his staff who provided excellent support as well as the materials and space for us to carry out this very important work.

This month's featured painting is by Linda Stephenson. Linda has produced this fine piece of work in acrylic paint and it represents St Andrew's Church, South Lopham in Norfolk. St Andrew's is one of Norfolk's most historic churches and has a structure dating back to the 10th Century. Many updates over the centuries have made the building an architectural treasure trove which, today, is open to the public.

If you like this and would like to see some more of our members' fine works, why not come along to our Art Show & Sale which will take place at the Wesley on Saturday 21st and Sunday 22nd September. In addition to paintings, other crafts created by our members will be on display and available to purchase.

Eddie Douglas



St Andrew's Church, South Lopham in Norfolk.

Linda Stephenson

ELMSWELL ART CLUB MEETS EVERY TUESDAY FROM 09:00 TO 12:00 AT THE WESLEY AND NEW MEMBERS ARE ALWAYS WELCOME.



'I'm in PAIN!' Can Chiropractic help me?

Your initial visit will include:

- A consultation with the Chiropractor
- A thorough spinal examination with Orthopaedic & Neurological tests
 - A confidential report of findings
- An explanation of our treatment programme if we determine Chiropractic can help you.



Call TODAY for an appointment

Please visit our website for further information

www.abbeychiropractic.com

Registered with The GCC, RCC, SCA & BCA



6 Glastonbury Road
Bury St Edmunds,
IP33 2EX

01284 706570



7 Stowupland Road,
Stowmarket,
IP14 5AG

01449 612620



WESLEY
Coffee Shop...

where you are warm and welcome

**Weekdays 9.00 – 4.00,
Saturdays 9.30 – 4.00**

allhomes

YOUR BUYER
IS OUT THERE

LET US HELP YOU
FIND THEM

01359 234444
mail@allhomes.uk.com
allhomes.uk.com

Book a FREE property valuation with us today



KARATE CLASSES

THE BLACKBOURNE, ELMSWELL



BOOK A FREE TRIAL CLASS

f ELMSWELL KARATE @ 07752 328024

Arboricultural & Landscaping Solutions

- All Aspects of Tree Surgery
- Soft & Hard Landscapping
- Maintenance & Lawn Care
- Fencing
- Domestic & Commercial
- Fully Insured
- NPTC Qualified

For more information please visit:
www.greenscenetreesurgery.co.uk



GREEN SCENE

PLEASE CONTACT US TODAY FOR FREE QUOTATIONS & ADVICE

Phone: 01359 298141 Mobile: 07866 866 880

Email: greenscene@hotmail.co.uk



ELMSWELL W.I.

Trish stood in for Terry, our new president, because she was on holiday. After welcoming everyone, including some new members, Trish introduced Alison Handley and her



helper Alex, who proceeded to explain indoor Curling to us all. Most of us had never played this game before. It is inspired by the Scottish sport of Curling but is not played on ice! Instead, it is played indoors on a smooth, flat surface and the "stones" have stainless steel ball bearings underneath, so that they glide across the floor. The game can be played by people of any age, height or ability. There are eight stones, four blue and four red, and two telescopic pushers, which are used to propel the stones towards a target mat. Alison divided us into teams of four, after we had all had a practice, and we played against each other. It was great fun and nearly everyone took part. Some players were very tentative and their stones did not reach the target, whereas others did not know their own strength and their stones went way past it! Eventually there was a winning team and their prizes were pineapples! Trish reminded us about the Thedwastre Group Meeting, which we hosted at the Blackbourne on June 27th. Unfortunately Brenda, our previous

president was unwell. Trish had wanted to thank her for all her hard work and present her with a plant and a card. Margaret kindly offered to take it round to her.

Our July meeting is "Birthday Fish and Chips".

For our July meeting we spent an enjoyable evening, eating fish and chips, chatting and generally socialising! We guessed the names of famous people from their photographs and had a pencil and paper Beetle Drive, which became very competitive and was lots of fun. Thanks go to Tricia for providing the games.

Our July "Coffee and chat" will be at 10.00am, 20th July at the Wesley. At our August meeting, we shall be listening to a talk called "Forensic Science, Blood, Sweat and Fears," which promises to be fascinating!

Rosie Collins
01359 241652



ELMSWELL GARDENING CLUB

On Tuesday 16th July Members and friends of Elmswell Gardening Club went on a delightful club outing to Hyde Hall RHS garden in Essex. We left Elmswell at around 9.30 and were taken by coach to the gardens, 10 miles south of Chelmsford.

We were incredibly lucky with the weather - it was perfect - sunny with a light breeze and dry until there was just a short burst of rain as we were leaving.

The gardens are set on and around a hill in rural Essex. The views from the top are far-reaching and are visible from the restaurant, nearby outside seating area and gardens at the top.

There was consideration given to those less mobile amongst the group

with hand-powered and motorised wheelchairs available to book in advance as well as a vehicle to transport people to the top.

The whole site is divided into a number of smaller gardens, the courtyard gardens have a Rose Garden, a Cottage Garden and a Modern Country Garden. The Dry Garden has mediterranean plants that can withstand heat and dry conditions. The walk up the hill goes through a Japanese style planting area and plants from Australia and New Zealand.

At the top is a large green house in the middle of the Global Growth Vegetable Garden section. There were many unusual plants from all corners of the world as well as more traditional British

fruit and vegetables. The walk back up to the top restaurant past the huge summer flowering borders was magnificent.

There was so much to see that several members of the group have suggested a second visit at a different time of year.

Our thanks to Janet, Nick and Dave for arranging such an enjoyable outing and to Mike for ensuring we were all aboard the bus both going and for the return journey.

The photos, taken by Nick, show the dry garden, the floral zone and a section of the cottage garden.

The group is taking a summer break until our next meeting on Tuesday 17th September.

Further information about Elmswell Gardening Club please contact Nick on 01359 242601 or e-mail: elmswellgadmin@btinternet.com





Andrew Bingham

INDEPENDENT FUNERAL SERVICE

Local Caring Independent Funeral Service

www.andrewbingham.co.uk
01449 771666



Golden Charter
 Funeral Plans

The Nutshell, Milton Road South,
 Stowmarket, IP14 1EZ



Don't just take our word for it ...

“ From the outset the service we received was prompt, efficient, first class and friendly - with good feedback. ”

“ Your service was helpful & professional from start to finish. We were most impressed. ”

“ My house sold within days of you putting it on the market and thereafter you were always on the end of your phone, in order to answer my many questions. ”

“ Your knowledge of the local property market proved invaluable and your attention to potential purchasers, a great time saving asset. ”

“ I have used Coakley & Theaker Estate Agents to sell three properties, all of which they handled extremely professionally. ”

“ We can only praise Simon for the solid, professional and enthusiastic work that went into the sale. ”

“ Your patience and liaising went a long way to bringing everything to the right conclusion. You gave it the personal touch which goes a long way. ”

“ The professionalism and 'go the extra mile' attitude, which you do not seem to get from the big corporate agents, will be the reason we shall be returning in future. ”

“ Your experience and calm and collected manner really showed through. ”

“ We were grateful for your sound advice, help, willingness to be flexible and of course for quickly finding us a buyer. ”

“ Your diligence, patience and constant shepherding of the multiple parties involved has seen the matter through to its positive conclusion. ”

“ From start to finish you kept us informed on everything, making the whole experience stress-free. ”

“ I recommend their services as you are treated more as an individual human being and not a number. ”

“ Dealing with Simon was a comfort during what was a daunting process. ”

PLEASE CALL FOR YOUR FREE VALUATION
 01284 769691 • 01449 737706 • 07803 138123
 or visit www.coakleyandtheaker.co.uk

*If you have instructed another agent on a sole agency basis, then the terms of those instructions should be considered to avoid a possible liability to pay two fees.



NOW IN ELMSWELL
CALL 01359 256821
 Reduced fee for Elmswell Sellers*
*T's & C's and minimum fees apply



WESLEY Coffee Shop...
where you are warm and welcome

Weekdays 9.00 – 4.00, Saturdays 9.30 – 4.00



ELMSWELL FOOTPATH WALK Sunday 14th July 2024

On a fine summer morning a group of 5 ramblers amassed at Crown Mill in expectation of a gentle stroll around the footpaths of the village and beyond.

A quick about 180 degrees took us along Crown Mill, through the garages on Bennett Avenue, along William Armstrong Close, Rowan Green, Miller Close, Jubilee Terrace (FP19), across Wetherden Road into Mill Gardens and our first countryside footpath - FP20.

Here we passed to the rear of St John's Mead heading east to the conifer plantation.

A right and left took us into the parish of Wetherden, past Warren Mill House along the track and past the two rather grand new dwellings on the left hand side.



the walk up the slope, firstly in a wooded canopy then into an open field heading up towards the railway line.

Over the footbridge and a sharp right had us heading east alongside the railway, then a left took us over the track and another left on to FP36. Along the field boundary and over the footbridge took us on to Ashfield Road.

Here we had the benefit of the key to Mutton Hall and we progressed westwards, under the railway bridge and emerging on to FP23 back safe into Elmswell.

FP23 led on to FP9 and hence FP10 along to the Pharmacy and home.

For a definitive footpath map you may care to refer to <https://www.suffolk.gov.uk/asset-library/elmswell-definitive-map.pdf> for further information.

An eminently pleasurable stroll of 4.44 miles in 1 hour and 53 minutes (an average speed of 2.4 miles per hour)

Peter Hancock, EPC Footpath Officer



We turned half right on to FP25A and across Wetherden Warren with the woods on the left hand side. Pleasant views to the right across towards Haughley Park.

Carrying on straight ahead, FP25A morphed into FP23 and we passed the playing field on the left and the village hall on the right.

We emerged on to Park Road, turning left and then right on to Stowmarket Road at the Maypole.

After 150 metres we turned left on to FP29 alongside a stream and up past St Mary's Church and then some delightful cottages, with gardens opposite, on Church Walk.

A right and left took us northwards on Beech Lane and FP35. A very pleasant part of

AUGUST'S FOOTPATH WALK WILL BE ON SUNDAY 11th AUGUST

OVER 55'S CLUB

Since our last report we have had a very successful day at the recent "June in Tune" event at the Blackbourne when our stalls selling cakes and tombola did a roaring trade in so much that we raised a good sum for the club funds.

On Thursday July 18th we had a full house for our evening with «Bob Whiting» who was in fine form for almost 2 hours with a marvelous selection of music and songs which we could join in with and even take to the floor for a bit of dancing,

By the time you read your newsletter we will have been to the Hut at Felixstowe for our day out with Fish & Chips being delivered by "Steve" from the Bounty Fish Shop spot on time.

We will give a report on the day regarding the weather etc next time.

Our next meeting is on August 18th when we will have a Bingo Session.

It is pleasing to see that we have had several new members join us recently which is good to boast our membership.

The remainder of the years events will be added to the Whats on in Elmswell page in the newsletter.

For further information please contact Diann 241002 or Grant 240943



PARK GARAGE SERVICES

Units 1-2, Station Rd Industrial Estate, Station Rd, Elmswell, Bury St. Edmunds, Suffolk IP30 9HD.

ALL TYPES OF SERVICING - WELDING - MOT WORK - CLUTCHES - EXHAUSTS - SHOCKS
AIR CONDITIONING - TYRES - COMPUTER DIAGNOSTICS - BATTERIES - CAMBELTS - BRAKES



Your LOCAL GARAGE with over 20 years experience servicing and repairing all makes and models.

TEL: 01359 242479 OR VISIT: WWW.PARKGARAGESERVICES.CO.UK

CLUBS & SOCIETIES

HISTORY GROUP

Our July outing to **Ely's Fenland Museum** included an excellent 90-minute guided tour from Felix who took us through all the ages and different aspects of Ely's history in their beautifully refurbished and extended building. Well worth a visit and enjoyed by everyone, with the added bonus on the day of watching a number of morris-men dancing performances all around the town, from the nearby Ely Folk Festival.

ELY³⁸ FOLK FESTIVAL
12-14 JULY 2024

We hope to have a small display at this year's **ElmsFest** on Sat 7th **September**, 12-5pm, at the Blackbourne, so do come and see us there then, when you can perhaps take part in our local competition with the chance of winning free entry to one of our new talks. We should be in the Chamberlayne Hall, near the bar!

We look forward to welcoming you back to the Wesley next month for the start of our new 2024-25 season of historical talks with an East Anglian flavour. Our first talk on **12th September** will be "**Hop Cultivation in Suffolk**" by local historian, Neil Langridge; more details in next month's newsletter.

Meanwhile, for those of you who like to whizz around our peaceful country lanes on your bikes during the summer months, spare a thought for the early 20th Century Cyclist Battalions of the Volunteer Corps (read on).

**Elmswell
History
Group**

For further information about our History Group, please visit our website –

www.elmswell-history.org.uk
or contact our Secretary,
on 01359-242601

The Old Tea Room Veterinary Surgery

For a professional caring service

Tel: 01359 241 761

Station Road, Elmswell,
Bury St Edmunds IP30 9HA

www.elmswellvets.co.uk



HAYWARDS SOLICITORS

FOR ALL YOUR FAMILY LEGAL NEEDS

We offer Fixed Fees at Competitive Rates

Telephone: (01449) 613631

email: enquiries@haywards-solicitors.co.uk

www.haywards-solicitors.co.uk

Free Car Park Available For Use By Clients.

7 - 9 TAVERN STREET, STOWMARKET, SUFFOLK IP14 1PJ



FROM THE ARCHIVE, 8th August 1902 -

A summer camp was held near Ipswich to train members of the newly-formed Suffolk Cyclist Battalion. The bikes were designed to enable the rider to travel as a completely self-contained one-man fighting unit. Everything needed could be stowed away on the machine, with a small kitbag carried behind the seat to hold rations and personal items, and an emergency toolkit hung from the crossbar. With the brisk east-coast wind up their jackets, recruits were trained to patrol the area between the Rivers Deben and Waveney in the event of war. (Ref: *Ipswich at War*)

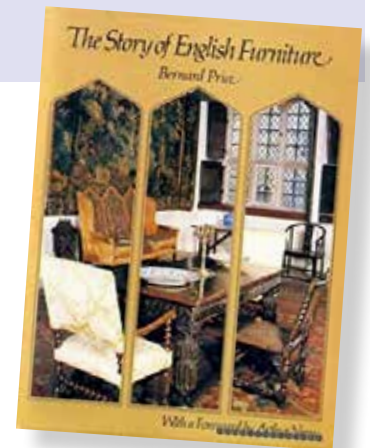


From the BBC's "WW1 at Home" website in conjunction with the Imperial War Museum, we also learn that the 6th (Cyclist) Battalion of the Suffolk Regiment was originally raised by a local businessman, Lieutenant Colonel W.T. Pretty, who ran a corset-making factory in Ipswich. By the time the battalion was at full strength, it included men from across the county, although more came from Lowestoft than anywhere else. At full strength in August 1914, they were at their annual training camp at Pakefield when war broke out, after which the battalion moved to its war station in Saxmundham and, until the arrival of other cyclist battalions, it had responsibility to protect the entire(!) Suffolk coast. The battalion never went overseas as a unit, but men could volunteer for overseas duty and many did just that. Those who remained at home were stationed across the east of the county, with groups in Wickham Market, Corton, Southwold and Leiston. Conditions were not comfortable, with the men sleeping on straw beds. One group ended up at the diesel engine-works in Ipswich; their battalion history records them "sleeping on the oily floors amongst huge machines, with only two blankets apiece."

(Image: 6th Suffolk cyclists training in East Suffolk, courtesy of Mary Trumppess)

And Finally ...

Have an enjoyable summer but, if the weather isn't kind and/or you're stuck indoors for any reason, why not catch up on a re-run of the BBC's 1970s series "The Story of English Furniture" on BBC4 (Freeview 9) or the iPlayer. This covers six centuries of furniture-making but also gives some fascinating details of general British history in a very relaxed and easy-going manner. So, feast your eyes on these sumptuous pieces of historic furniture and your ears on the dulcet tones of Hugh Scully and Arthur Negus - remember them?!




Spring Cleaning Services

RELIABLE & TRUSTED CLEANING SERVICES


Do you find cleaning difficult?
Keeping your home clean is essential for health, safety, and overall well-being, especially as we age. Let us take care of the cleaning, so you can enjoy a healthy and beautiful home - call us today at 07763 006 114 for a 20% senior discount on your first deep cleaning!

OUR SERVICES


- ✓ Deep cleaning
- ✓ Oven cleaning
- ✓ Carpet cleaning
- ✓ Upholstery cleaning
- ✓ Follow up/Regular cleaning

BOOK NOW!
info@springcleaningservices.co.uk
www.springcleaningservices.co.uk

07763 006 114



PAUL SCASE
Home Improvements



Painting

- Using the best named paints to give you a professional finish
- Colour charts provided to give you the best choice of colours

Carpentry

- All DIY jobs shelving, storage etc
- Made to measure and flat pack

Excellent Rates
Mobile: 07745 250440

KH

Kevin Hollings
KITCHEN STUDIO



Unit 14 Lodge Works, Stowmarket Road,
Old Newton, IP14 4EE
01449 257160 www.kevinhollings.com
info@kevinhollingskitchens.co.uk

ELMSWELL

& Maintenance Services

ELECTRICAL

For all your Electrical jobs big or small call
Grant on 07597385744 or
email elmswellems@gmail.com



Langleys Conservatories & Windows

Your local family run business established in 1987



Telephone 01284 760345

Visit: www.langleysconservatories.co.uk Email: enquiries@langleysconservatories.co.uk

The best in energy efficient doors and windows!

Improve the insulation values and beauty of your home with the company you can rely on.

Feeling the chill this winter? heating bills getting more and more alarming? Then maybe its time to invest in new energy efficient double or triple glazing from the local company trading since 1986 in Bury St Edmunds. We don't do gimmicks or engineered discounts, we just offer great value for money with a first class service, premium products and guarantees to back it all up. Give us a call to arrange a free quotation on 01284 760345. Don't forget to check out www.Langleysconservatories.co.uk to see all of the home improvement services we offer.



Call today on 01284 760345 or email enquiries@langleysconservatories.co.uk



ONE DOOR CLOSSES...

The Community Benefit Society, Elmswell Community Enterprise, which drove the project from being just a good idea to being plans on paper and money in the bank has almost completed the winding-up process. The baton now passes to the Parish Council who own the site on the village's behalf. Many of the original shareholders have simply donated their investment to the Parish Council's Tavern Refurbishment fund. This is to add to the core grant of £500,000 to be drawn down from the developer contributions held by Mid Suffolk as 'earned' by Elmswell from the intensive housebuilding over recent years.

...ANOTHER DOOR BEGINS TO CREAK OPEN...

as 5 front runners emerge from the dozen-or-so local building contractors who expressed an interest in bidding for the refurbishment of the core pub and the new-build facilities. From the detailed information they have provided an assessment can now be made towards invitations to submit a costed Tender. The deadline for the return of Tenders is September and a Contract could then be in place before the end of October.

BUT A LOT HINGES ON;

- ★ The Tenders - the skilled, practical assessments of real-time, hands-on builders as to a project cost...they could be way beyond the team's working assessment
- ★ Other funding such as the Government's 'Levelling Up' money, once in the gift of Michael Gove, now it's Angela Rayner (supporter of 'Long Live the Local' campaign)
- ★ The continued energy input from the volunteers who carry on slogging.

MEANWHILE THE GLASS...

remains either half full or half empty depending on the eye of the beholder.

The time-served Engineer's view is the one the volunteers would seem to prefer ...in either case, too full or not full enough, you can always change the size of the glass.

What matters is what works.

What matters is a community pub for Elmswell.



Family day
in the Tavern garden



Tavern supporters get together at a pop-up bar...
waiting for their pub to open



Office space to rent in Woolpit Village Square
Call Mac for more details:
07775 858562



South Lee Prep School & Nursery, Bury St Edmunds
a place to flourish, a place for adventure, a place to be me



- A warm and nurturing environment with a family feel
- Small class sizes of 15 or under with bespoke support
- Innovative curriculum
- Specialist teachers
- Outstanding Pastoral Care
- Wraparound care from 7:30am to 6:00pm

Don't miss your chance to be a part of our South Lee Prep School family.

Independent education at an affordable price

South Lee Prep School & Nursery, Bury St Edmunds

BOOK YOUR TOUR NOW BY SCANNING THE QR CODE AND COMPLETING THE FORM



South Lee Prep School & Nursery
Nowton Road, Bury St Edmunds, IP33 2BT Suffolk, United Kingdom
+44 1284 754654 office@southlee.co.uk



CITIZENS ADVICE

I've got to move house and will be renting somewhere on my own for the first time. Do you have any tips or advice on what I should do when looking for a new home?

Whether you're renting on your own or with other people, one of the first decisions to make is whether you want to rent directly from a landlord or through a letting agent.

Renting directly from a landlord might mean you have less to pay before moving in, fewer references and you might not need to do a credit check. Alternatively, renting through a letting agent means that if they manage the property, they'll liaise with the landlord about any repairs that need doing on your behalf.

There are lots of websites you can use to find somewhere to rent but if you can't look online, you could visit a local estate agent or ask friends and family to help you. Remember, never pay any money before you've seen the property.

Avoid renting directly from an existing tenant, this is called 'subletting' and the tenant might not have the landlord's permission to rent to you. If a tenant is showing you around the property on behalf of the landlord, they should give you the landlord's contact details.

Make sure the property you're going to rent is safe, affordable and meets your needs. Ask the landlord or letting agent how much rent is and how it should be paid. If the rent includes any bills. How long the tenancy is. Opportunity to renew. A break clause in case you need to end the tenancy early.

Check if you'll need to pay a holding deposit while the landlord carries out pre-tenancy checks, this can't be more than a week's rent and should be returned to you at the start of the tenancy. You should also ask your landlord or letting agent what documents you'll need to provide when you agree to rent the property including evidence of your Right to Rent.

Before you go ahead, ask how your tenancy deposit will be protected, if any furniture or appliances are included in the tenancy and, if relevant, whether you can have pets. You should also request any obvious problems with the property are fixed before you move in.

If a landlord refuses to rent to you because of who you are, this may be discrimination. A 'no kids policy' or refusing to rent to you because you get benefits could also be discrimination. You only need to tell a landlord or letting agent you receive benefits if they ask.

Citizens Advice Mid Suffolk can provide in depth advice on this issue and much more, including debt, finances, employment, benefits and family/relationships. You can contact them by phone on 01449 676060, visit in person at Milton House, 5 Milton Road South, Stowmarket IP14 1EZ or use the contact form at midsuffolcab.org.uk/contact-us. Opening hours are Monday-Thursday 9.30am – 3.30pm and Friday 9.30am – 12.30pm.

**citizens
advice**

Mid Suffolk

WESLEY UKULELE BAND

Well, what a busy month! 'June in Tune' has been and gone and we have had 4 gigs since then.

Firstly 'JIT' was a very enjoyable afternoon with sets from Stanton Folk, Heads, Just Us, Alan and the Quays, 70 Shades of Grey, Scrambled Eggs and the Wesley Ukes. OK, it didn't all go completely to plan, but the reaction from the audience was very positive and all seemed to enjoy it. The music was backed up with various craft stalls, great food and some really good beer, hosted by the Blackbourne team.

This was followed by appearances at Nowton Court Village, 'Chin Wags' at Needham Market, the Stroke Club in Stowmarket and another return visit to Time Out Club in Fornham. Again, very well received by our guests and great fun for us to play.

This next month is looking slightly quieter, with the Nowton Court Village Summer Fair. Hopefully the weather will be kind, as it is an outdoor event. This is followed by Baylham Fete and another return visit to Time Out Club in Fornham. This one is becoming a regular event.

Our picture this month features two of our longest serving members, Peter Edmonds from our brass section and Peter Williams, our talented harmonica player.

'Til next time. Take care.

For information, please call Kevin on 07710 149040 or Carol Or email: Kevin.Knock99@gmail.com



Traditional Music Day

Saturday 21st September 2024

Stowmarket, Suffolk

10.30am-5.00pm FREE EVENTS
7.00pm-10.45pm TICKETED & FREE EVENTS



BJW PLUMBING & HEATING YOUR RELIABLE LOCAL PLUMBER

Boiler Servicing
Central Heating Installation
Maintenance & Repairs
Bathroom Suites, Showers, Tiling
Install Washing Machines/Dishwashers
Burst/Leaking Pipes
Water Softeners
General Plumbing Needs



GAS Safe registered 200169

BARRY WARD: 01449 615339/07734 872549

ELMSWELL ART CLUB

2024 ART SHOW & SALE

ORIGINAL WORKS
BY LOCAL ARTISTS

SATURDAY 21st
& SUNDAY 22nd
SEPTEMBER

10AM TO 4PM

WESLEY HALL,
SCHOOL ROAD, ELMSWELL

NEW THIS YEAR:
DISPLAYS OF OTHER CRAFTS
CREATED BY OUR MEMBERS
WILL BE ON SHOW AND
AVAILABLE FOR SALE

ADMISSION FREE

TOMBOLA

REFRESHMENTS (BOTH DAYS
VIA THE COFFEE SHOP)

www.clearfinancialservices.co.uk

Worried about Savings?

Let our team of financial advisers help you to get the most from your savings and investments.

Confused about your pension?

We would be happy to discuss the options available for your retirement planning.

Want to protect your family or income or mortgage and loan?

We are here to advise on the right solutions for your budget.

Mortgages?

For a competitive mortgage, we have advisers to assist with that purchase or remortgage.

Equity Release

We have advisers able to assist you with this area of advice.

Equity Release will reduce the value of your estate and can affect your eligibility for means tested benefits.

We make it



The Old Police House,
Cooks Road, Elmswell,
Bury St Edmunds,
Suffolk IP30 9DB.

Tel: 0345 271 3245



Approver Quilter Financial Services Limited & Quilter Mortgage Planning Limited. 12/06/2023



All types of driveways

All types of patio's
including porcelain

Shed bases

Concrete Foundations

Mini Digger Hire

Mobile: 07990 502354

Tel: 01359 250496

Find us on Facebook
GKW Groundworks



ELMSWELL LIBRARY

Hello Elmswell,

As many of you know Lisa has left the library to run a café and we now have our new member of staff Moss Milne. They have previously worked in Ipswich Library so some of you may already have come across them and if not then feel free to introduce yourself if you come in when they are working. The Reading Quest is in full swing. Once children have completed a quest or read a book they can come in and tell our volunteers or staff about it at the following times.

Tuesdays 11.30am – 12.30pm,
3pm – 4pm and 5pm – 6pm

Wednesday 3pm – 4pm

Thursday 3pm – 4pm

Friday 3pm – 4pm

Saturday 11.30am – 12.30pm

Sunday 11.30am – 12.30pm

When you sign up you get a fold out map with quest ideas.

Then each week there is a different reward and activity 27th July to 2nd August notebook, sticker and bingo sheet, 3rd August – 9th August pencil and origami bookmark, 10th August – 16th August stickers and treasure hunt, 17th August – 23rd August wristband and book recommendation postcard and 24th August – 31st August DIY map. There will then be a celebration event to collect the medal and certificate.

When Suffolk Libraries became a charity separate from Suffolk County Council in 2012, Elmswell, along with many other villages in Suffolk, set up a "Library Friends" group. Its purpose was, and continues to be, to help increase the provision of library services by raising funds to purchase equipment, provide more opportunities for the community to engage with the library and to contribute to the development of library services

in the county. The pressure on library budgets is no less intense than it was 12 years ago, so it remains vital that our village Library Friends Group continues to exist. However, in order to do so it needs a new generation of people to step up and run the organisation as the present officers, having served for a number of years, would like to step down. If our village library is important to you, please come along to the AGM at 5:30 pm in the library on Wednesday 25th September and volunteer. Elmswell Library needs you.

The display this month is inspired by the Olympics and Paralympics happening in Paris, so we have gone for books set in France. We have books by Jen Wang, V. E. Schwab, Dan Jones, Alexander McCall Smith, Veronica Henry, Stephanie Sy-Quia and more. The fiction includes elements of fashion, romance, crimes, spies and battles, with non fiction and poetry so there should be something for everyone to enjoy.

The exhibition is photographic work by Heath Brown. Heath's artistic vision is a captivating dialogue with the environment itself. Drawing inspiration from the interplay between Kantian notions of the sublime and the rich traditions of both pictorial and abstract art, he carves a unique path. Unlike the dramatic landscapes of Romanticism personified by artists like Caspar David Friedrich, his work seeks awe in the unassuming.

We are able to offer the range of books, activities, newspapers, computer access, in part to donations to Suffolk Libraries. If you are able to, please consider donating to Suffolk Libraries. You can donate via <https://www.suffolklibraries.co.uk/support-us>

See you in the library soon,

Miles

What's on at

Elmswell Library?

Story Time

1.10pm – 1.30pm every Tuesday
(except 1st one of the month)

9.10am – 9.30am every 1st Tuesday

Sunday Crafts

1pm – 2pm every Sunday (origami 4th and 18th August)

Lego Club

Every Sunday 11am – 12noon

The Keep in Touch Community Café

Not on during August

Opening times

Monday:	Closed
Tuesday:	10am – 1pm and 2pm – 7pm
Wednesday:	2pm – 5pm
Thursday:	10am – 1pm and 2pm – 7pm
Friday:	2pm – 5pm
Saturday:	10am – 1pm
Sunday:	10am – 3pm



CLUBS & SOCIETIES

ELMSWELL EXCHANGE WI

Mary welcomed everyone to our July meeting.

This month Margaret Brackenbury got everyone involved with making a post it note folder.

Margaret had everything prepared for us and with her instructions everyone managed to make one, even craft phobics like myself. Our thanks to Margaret for giving us an enjoyable afternoon where we all achieved something!

The competition was something you had made yourself in any medium. There were a lot of entries for Margaret to judge but the decision was Barbara Yeates 1st, Barbara Carter 2nd and Maureen Lazarus 3rd.

Next month's speaker is Lucy Lewis and the subject is "Lighting the Fuse". The competition is an item of military memorabilia, including photographs.

Visitors and new members are always welcome.



ST JOHN'S CHURCH

Greetings from St John's Church

It is the peak of the holiday season and time for families to take a well-earned break. It is good to be able to get away from it all and recharge and spend time with friends and family. God believes rest is very important. He designed us to be creatures who find meaning in work, but who also need to rest. True rest is actually where we find complete fulfilment and Jesus teaches us that true rest can only be found in him. In Matthew 11:28-29, he says: *"Come to me, all you who are weary and burdened, and I will give you rest. Take my yoke upon you and learn from me, for I am gentle and humble in heart, and you will find rest for your souls."* Matthew 11:28-29

July was a busy month, including a men's breakfast, the annual church barbecue and 3 baptisms – one child and two adults. Baptism is a powerful initiation rite in the Christian Church and symbolises what God does for all who turn to him – he washes and purifies us from all unrighteousness. If you would like to find out more about baptism or following Jesus, please get in touch.

During the summer period at St John's, our Sunday school leaders take a break and our children join most of the main service. There is, however, a *Bible Bite* and some craft included for them each week. During August, we are looking at some exciting events in the life of the early church from Acts of the Apostles.

All are very welcome at St John's – we meet at 10:30am on Sundays to worship the Lord. Tea, coffee, squash and biscuits are available afterwards and we would love to meet you.

Upcoming Dates:

Sun 4 Aug 9:00am	Holy Communion
Sun 4 Aug 10:30am	Family Service
Sun 11 Aug 10:30am	Sunday Worship with Holy Communion
Sun 18 Aug 10:30am	Sunday Worship
Sun 25 Aug 10:30am	Sunday Worship with Holy Communion
Sun 1 Sep 9:00am	Holy Communion
Sun 1 Sep 10:30am	Family Service

Every Saturday:

9:00am Weekly prayer meeting online (see website for details)

We live stream most of the 10:30am services on our Facebook page (also available on our main web site later that day).

Rector: Peter Goodridge,
elmswellrector@gmail.com
(01359 240512)

Web site: www.stjohnselmswell.org.uk

Facebook:

www.facebook.com/stjohnselmswell

YouTube:

www.youtube.com/@stjohnselmswell

ST. JOHN'S CHURCH

TOWER

FLOODLIGHTING

Everyone is welcome to sponsor the floodlighting of St. John's, a gratifying way to commemorate a personal event, an anniversary, or any other special

occasion. Alternatively, you can simply make a donation. And it all helps to pay the day-to-day running expenses of our parish church.

A night's floodlighting costs £5.

Cheques payable please to "ST. JOHN'S CHURCH, ELMSWELL".

For the summer months the lights will be on between 8.00 p.m. and midnight.

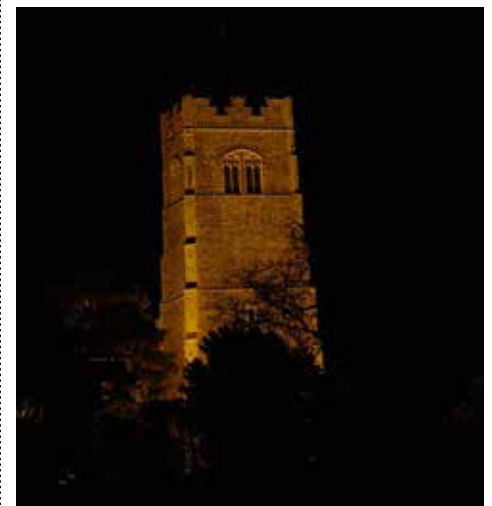
Please note the deadline for inclusion in the September Newsletter is Monday 26th August.

Your support is very much appreciated.

Thank You.

JULY 2024 SPONSORSHIP NOT PREVIOUSLY ACKNOWLEDGED

28 treasured and loving memories of our dearest Mum, Pat Burch, passed away on 28 July 2019. "Living on with us. Miss you. Love you always". Marina, Steven, Geoffrey, Ricky, Nigel and Dawn. xxxxxx.





AUGUST 2024 SPONSORSHIPS

- 2 cherished memories of Dora Lily Handyside on her Birthday.
"Remembered with love. God Bless". xx.
- 6 13th Wedding Anniversary - Annette & Stuart Martin.
- 8 in memory of my dear wife, Pat Burch, called home on 28th July 2019. Treasuring and re-living the memories of your Birthday on 8th August 2024, which this year would have been your 90th. All my love, Dick.
- 17 to remember and thank all those past Elmswell Fire-Fighters who served their village and community so well.
- 23 in loving memory of Duncan Wardrop. "Gone, but not forgotten". Love, Alex, Doug & Teddy. xxx.

All bookings and payments please to :-

Trevor Sadler, Abbots Warren, Church Road, Elmswell (Tel: 240908)



CATHOLIC PARISH OF OUR LADY, STOWMARKET

Parish Priest:

Rev. Simon Leworthy,
The Presbytery, 29 Lockington Road,
Stowmarket, IP14 1BQ
Tel:01449-612946
E-mail: pp@ourladystowmarket.org.uk

MASS TIMES:

Saturday (First Mass of Sunday) – 6pm
St Mary's C of E Church, Woolpit IP30 9QG

Sundays – 8.30am & 10.15am

Our Lady's, Stricklands Road,
Stowmarket IP14 1AW

Holy Days – 10am & 7.30pm

Our Lady's Strickland Road Stowmarket

Weekday Mass is usually 10am, see the weekly Newsletter or the Parish Website – www.ourladystowmarket.org.uk

All are welcome to "Coffee and Chat", 2 – 4pm on the 2nd and 4th Thursday of the month. This is held in the Parish Hall above the Church – a lift is available.



ELMSWELL BAPTIST CHURCH

We hope you will be able to have some time this summer when you can step aside from the rat race and have a chance to recharge your batteries over the next few weeks.

The world continues to be a very strange place doesn't it? We've got a new government with a huge majority but less than one in five people actually voted for them. The USA will soon have a new President, again it would seem that a lot of people are not exactly overwhelmed at the choice they are being given. War continues in Ukraine, Gaza and many other places without any seeming hope that the fighting will stop any time soon. Many are concerned about Russia, North Korea, Iran and China becoming more belligerent. And then just recently large sections of the world were brought to a standstill by a computer glitch, from our local doctors to the world's airlines. Chaos all around.

As Christians we believe that God is ultimately in control, even if this is difficult to square with the chaos all around. We believe that because Jesus rose from the dead his kingdom will be established in God's time, which can

seem to be a long time coming when we deal with the here and now and God sees things through the prism of eternity.

Why not come and find out more about this at one of our Sunday services at 10.30am every week? A warm welcome awaits.

We are grateful to all those who preach each week. The preachers booked for our 10.30am services in the coming weeks are as follows:-

August 4 th	Rev. Norman Tharby
August 11 th	Rev. Reg Craig
August 18 th	Rev. Reg Craig
August 25 th	Rev. Paul Hills
September 1 st	Rev. Robert Green (inc Communion)

The Ladies Friendship Group resume their meetings at 2pm on Monday September 2nd with a Cream Tea in the chapel garden preceded by musical entertainment from Angel Delight, a flute and harp duo. Telephone Margaret on 01359 241541 for more details. All ladies are welcome.

Our midweek gatherings start again on September 4th at 10.30am at the chapel with a Prayer Meeting. Our studies in the gospel of John will resume on September 18th for more details phone Tony on 07784095225.

Food 'n' Friends have a break this month, the next club is on September 12th at Middy. A home (more accurately, a church) cooked meal and plenty of time to chat. Telephone Jackie on 01359 245918 to book your place. All Senior Citizens are welcome.

Visit our website at www.elmswellbaptist.org.uk, email cockant2@btinternet.com text or call 07784 095225 or telephone 01359 241541 for further info.

Tony

Computer Help

PC, Mac, Server or Tablet support in your office or home.
A rapid response from a qualified IT professional.

- laptop and desktop repairs, speed up your system
- cyber security, cloud systems, network setup
- data recovery and virus removal
- improve wifi, smart TV, phone, tablet etc
- individual tuition

Gage Computer Services (01359) 245273
www.comphelp.co.uk steve@comphelp.co.uk



Est. 2003





Find us on **Facebook**
Follow us on **Instagram**

YOUR LOCAL RELIABLE SERVICE PROVIDER FOR BOILER SERVICING & REPAIRS

Benefits to an annual boiler service

- Catch any issues early on ✓
- Validate manufacturer warranty ✓
- Be ready-for winter ✓
- Save money on repairs ✓
- Extend the lifespan of your boiler ✓
- Keep your household safe and warm ✓

h2oplumbers.co.uk

Opus House, Elm Farm Park, Thurston, Bury St. Edmunds, Suffolk IP31 3SH



SPOON CARVING WORKSHOP

WITH LOCAL EXPERT,
NICK GOSMAN
at LUKESWOOD,
SAT 14 SEPTEMBER

10.00-4.00

£45 per person (includes tools & materials)

The course will include working safely with axes

Adult learning course (16+ only). To book a place or for more information please contact

ElmsWild – info@elmswild.org.uk

ABBEYGATE WINDOWS

Our new business premises is now open!
Please call in for a chat about any of the following:
Windows, Doors, Conservatories, Garage Doors, Fascias, Soffits and Hardi-Planking.

Unit 3 Enterprise Park, Etna Road, Bury St Edmunds, IP33 1JZ

iwa.biz **Assure** Certified Installer

TEL. 01284 763244
abbeygatowindows@btinternet.com
www.abbeygatowindows.co.uk

THOMAS & YOUNG
WEALTH MANAGEMENT LTD

- Investment Planning
- Retirement Planning
- Estate Planning
- Business Protection
- Income Protection
- Long Term Care
- Life Assurance
- Inheritance Tax Planning

Find us at:
Risby Business Park,
Newmarket Road,
Risby, Bury Saint Edmunds
IP28 6RD

CHARTERED FINANCIAL PLANNERS

Call: 01284 334400
www.tywm.co.uk

SJP Approved 29/04/2024

NEWS FROM ELMSWILD



Beauty of Bath kicks off the start of the apple harvest

The end of July seems early to have apples ready to pick. Most varieties are harvested in September or October, but there are a few early season apples which ripen and are ready to eat in July and August. Beauty of Bath is one of the earliest – it was developed in Victorian times as at that time there was a commercial demand for early ripening fruit (they didn't have the imported varieties that we have nowadays). It's a very attractive looking apple – bright red, and when you cut into the flesh it has a lovely pink tinge. Like many earlyies, Beauty of Bath is best eaten straight from the tree – it's definitely not one for storing! The flavour is generally sharp, but can be quite sweet if you pick and eat it before it becomes over-ripe. Eat them up quickly, though, as the flesh turns brown very rapidly.

We have two Beauty of Bath trees at Lukeswood – one standard and one on dwarf rootstock. They are both heavy croppers this year. For the Victorians they were a welcome sight, the herald of the new apple season. As you can see from our photos, we share that pleasure as we take a break around the picnic table. Visitors to Lukeswood are welcome to pick a few apples to enjoy – but probably best to munch them before you get home!



Spoon carving workshop, Saturday 14 September

Later this year we're very pleased to welcome a new course leader to Lukeswood. Local wood carver, Nick Gosman, will be leading a spoon carving course on Saturday 14th September, 10.00-4.00. Nick will be teaching participants to carve spoons, with a particular emphasis on using the axe as well as knife work. This is a really useful skill, shaping the basic spoon from a block of wood and allowing the knife to be reserved for finer details. Knowing how to wield an axe safely and confidently is crucial, so Nick's demonstration is a must for all would-be spoon carvers. We will be using birch wood from Lukeswood itself, and all materials and tools will be provided. Nick will guide us through all the processes involved in transforming a lump of wood into a sleek spoon. Cost is £45 per person, which is a very good price for this type of course. Because of the nature of the tools being used, this is one for adults only. If you would like to book a place please get in touch.

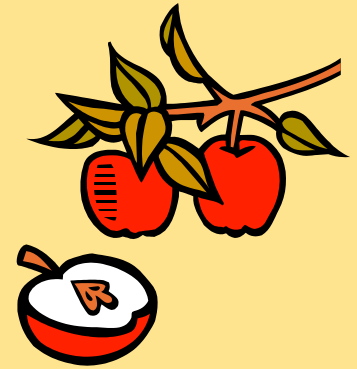
Apple Day is fast approaching!

Don't forget our Apple Day at Lukeswood on Saturday 21 September! We're planning some interesting attractions and activities, so get the date in your diary now. If you would like to book a stall, please get in touch soon so we can make sure there is space for you.

Mary Feeney
info@elmswild.org.uk



APPLE DAY at Lukeswood



Stalls
Apple ID and tasting
Games & activities
Crafts
Refreshments
Entertainments

Saturday
21st September
2.00-5.00
Everyone
welcome!
**FREE
ADMISSION**



P H Peckham

Plumbing & Heating Engineer

T. 01359 240958 M. 07802 642884
e. phpeckhamplumbing@gmail.com

- 24 HOUR CALL OUT
- FREE Estimates
- Corgi Registered Solid Fuel, Oil or Gas
- Bathroom Suites Designed and Installed
- Water Softeners Fitted
- Tiling
- Boilers Serviced



Wayne Salmon Electrical

For all your electrical requirements - Domestic, commercial and industrial.

All work carried out to a high standard.

Mobile 07843 302798



T.P. Services

UPV-c Window & Door Repairs

Sealed Units, Hinges, Locks, Handles, Letter Boxes

Over 30 years' experience, free quotations

Contact: Tom

Mob: 07957 098118

Email: tpservices65@gmail.com

BLOMFIELD MAINTENANCE

GAS ENGINEER
Natural and Propane (LPG)

Servicing and repairs of:
BOILERS & COOKERS

COMMERCIAL CATERING
EQUIPMENT

Installation of:
COOKERS and HOBS



LANDLORD GAS
SAFETY CHECKS

01359 241454

134842

07889 616937



**F. G. BROWN
- OPTICIANS**

Denmark House,
41 Bury Street,
Stowmarket

Tel:- 01449 612812/674030

As independent opticians we offer a more personalised eyecare service that you can trust for all the family including:-

Optomap retinal examination

Colorimetry

A wide range of competitively priced frames and spectacle lenses

Contact lenses

Prescription and non-prescription sunglasses

Your sight care is our priority

Made to Measure

Curtains, Cushions & Roman Blinds

Fabric Samples Available

Over 35 Years' Experience

Free Measuring Service Available

Call Dena on
07842110240 for a free quote

tcllandscapes.co.uk



The Country Life Landscapes *'Growing with you'*

Supply

Decorative Stones
Soil Improver • Turf
Aggregates • Stones
Woodchips • Barks
Hardcores • Logs
Sands • Topsoils
Composts & More

BULK BAG

Garden Supplies
& Waste Collection

Tel: 01359 240094

Email: orders@tcllandscapes.co.uk

- Design
- Construction
- Maintenance

As well as a complete landscape and maintenance service, we offer garden supplies and waste collection



Collection

Green Waste
Wood • Soil
Turf • Weeds
Hardcore • Stone
Brick • Slabs
Concrete • Metal



TONY FISHER

PLUMBING & PROPERTY MAINTENANCE

- 24hr Emergency Callout
- Bursts, leaks, blockages etc.
- Bathroom/shower installation
- Tanks/cylinders/radiators
- Tiling floors/walls
- Painting & Decorating
- General DIY jobs
- Garden Maintenance

Tel. 01359 242556

Mobile 07758327743

Reliable & Friendly Service!



Summer Fun

Summer Wordsearch

E D A H S S P R S S
 U G H F J V O S U U
 E S K I N O K G N N
 X P E B D J W N G S
 P G O T M T I I L C
 O A U I M A W H A R
 S O K U N H I T S E
 E J J L U X R O S E
 D Y J C S K S L E N
 T C E T O R P C S C

Outdoor
Protect
Sunglasses
Shade

Exposed
Skin
Clothing

Sun
Sunscreen
Hat

Can you make
Your own fruit kebabs?

Think about what
fruit you can use to
make a rainbow!



Summer Day Out Checklist



Seek shade



Cover up



Wear a wide-brimmed hat



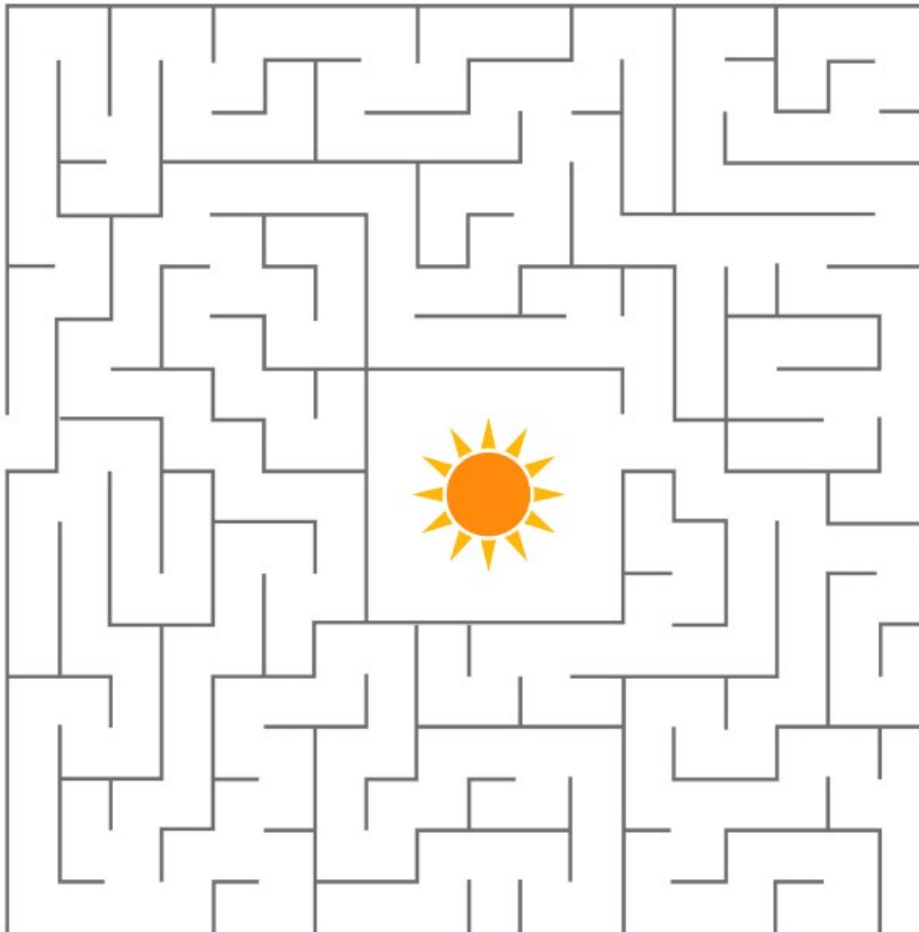
Wear sunglasses



Wear sunscreen

Can you design your
own sun cream bottle?

Can you make your way to the sun?



This page sponsored by





ELMSWELL FC Pre Season Friendlies

13/07	The Community Cup - Elmswell U18s v Firsts v Reserves
16/07	Elmswell v AFC Kesgrave mix
20/07	Elmswell v Stanton / Reserves v Brantham Dev. (tbc)
27/07	Elmswell v Stonham Aspal / Reserves v Kestrals A's
03/08	Elmswell v Coddendam / Reserves v Mendlesham
10/08	Elmswell v Samuels / Reserves v Bramford
17/08	Elmswell v Capel Plough / Reserves v Kesgrave AFC Res
24/08	League starts (tbc)

AT THE GROVE LANE SPORTS FIELD



FIRST TEAM REPORT

Pardon? Euros? Nah, dunno what you're on about mate. All focused on Elmswell FC now. Got our affiliation sorted with Suffolk FA and have started our friendlies. First up was a mid-week game against a mix of AFC Kesgrave. The Grove Lane pitch is looking as good as it has at this time of year for as long as I can remember. Mainly thanks to the grass cutting by David the Facilities Manager and also the poor summer we've had so far. Anyway, back to the game. It was a six-goal thriller. We could have been 6-0 up at half time, but we couldn't finish our chances and their keeper made some excellent saves. Final score was 3-3. Elmswell goals from Ellis Smith, Jordan Sylvester and Leo Mourao; two assists from Jed Hughes he tells me.

We were supposed to play Stanton on the Saturday, but after having 19 available on Tuesday, we couldn't make double figures so had to cancel. A couple of the lads played for the Reserves. You can read that match report on the opposite page.

You can see our other friendlies listed at the top of this page. Please know you are all welcome to come along and support the lads. The friendlies are at the Grove Lane pitch and kick off generally at 2:30 for the First Team.

Training continues at The Blackbourne, Tuesday nights for a 7pm start.



**S.S. KITCHEN FIT
& CARPENTRY**

STEPHEN SHEPHERD
KITCHEN FITTER & CARPENTER
07802681240
sskitchenfitandcarpentry@hotmail.com

PRE-SEASON TRAINING

TUESDAYS 7pm start
at The Blackbourne

New players welcome



ELMSWELL FC RESERVES' SPONSOR

ServiceMASTER Clean

Upholstery

Carpets & Rugs

Amtico+Karndean



t.01359 241577 m.07398251908

www.servicemasterclean.co.uk/west-suffolk



RESERVES REPORT

Numbers at training have been promising with lots of new faces joining the established squad. League fixtures are starting to be confirmed and we have filled all our preseason friendly slots.

The first friendly was at home to Kirton Development, a new team who will be in our division this season. As the name suggests they are a young team looking to develop in men's football. After seeing the Elmswell U18s the other week I hope that we'll be able to do the same thing next year. They are definitely good enough and able to cope with the physicality of it. Lets just hope they all want to keep playing together, and for Elmswell. So, back to the friendly. We had a couple of first teamers in as their game was cancelled. Jed Hughes' penalty was well saved but Finn Claydon tucked away the rebound on his club debut. Hughes got a second chance shortly afterwards and slotted this penalty even further into the bottom hand corner. 2-0. Kirton levelled the score, catching us on the break for one. Another new player, Harry Warburton, scored the winner. He made a good run and held off the defender impressively to find the net for the winner.

We've got designs in for new training t's and tracksuit tops and have some sponsorship spaces left if anyone is interested. They are going to look very smart indeed. Get yourself some of that action – email edddd101@gmail.com for more info or text 07398521908.

Up The Elm



PARK GARAGE SERVICES

your local garage

ALL MAKES & MODELS

SERVICE & REPAIRS

01359 242 479



The Elmswell Fish & Chip Shop

Great British

FISH & CHIPS

QUALITY KEBABS TOO!

01359 244672

Wimbledon Tennis Break 2025

Are you still buzzing after an incredible Wimbledon final? So are we!



We have classic two and three-day Wimbledon Breaks for 2025 which means that you not only get to enjoy a packed day of tennis fun and tradition, but you'll also have return transfers between your hotel and the grounds, the services of a tour manager, and best of all, reserved seats on No.1 Court.

Tel: 01359 242555 email: elmswell@travel-stop.co.uk
The office is open for walk-ins and appointments on Thursdays and 9am to 5:30pm for phone and email enquiries Monday to Saturday.

Nearly New Sale

FREE ENTRY

Saturday 21st September

11am - 2pm

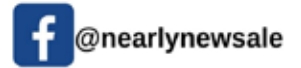
The Blackbourne, Elmswell IP30 9UH

Registration now open!

Any questions?
Please email
elmswell.nns@gmail.com



Scan here to get to our new registration form!



Toys, Books & Baby Equipment
School Uniforms & Clothes 0-9 yrs
& much more.



From concept to reality: trust Chapel Homes to bring your project to life

With over 20 years' experience, we are a highly professional local building company covering the Suffolk area and specialise in providing the following services:

- Bespoke new build
- Renovations and refurbishments
- Extensions and remodelling
- Barn conversions
- Commercial conversions
- Project management and design
- Planning advice/land options.

If you have a project you would like to talk to us about please call Gary on **07711 680262** or email Gary@chapelhomes.co.uk





ELMSWELL BABY AND TODDLER GROUP



We have had a wonderful summer term!

The committee have been as busy as ever, organising the crafts, refreshing the toys, cleaning the mats, booking people in for our 'summer of fun!', and of course making sure all the venues and companies we booked for the summer were ready for our arrival and the sessions.

We held our first 'adult' fundraiser with our cheese and wine night. We had 30 people from the local communities join us, tasting 7 wines with the wonderful Bob Stopp. We were treated to a selection of cheeses, mostly local, and again we must pass on our thanks to Becca for her help and expertise in the cheese department.

The evening and raffle together raised an amazing £900.

This money will be used to fund the autumn term events, and allow us to again have a Christmas special, and disco, along with a mid term treat for our regular group attendees!

The committee have spent the last few months discussing and enquiring with local companies places we could visit over the summer holidays.

Eventually we decided on, the Food Museum, Suffolk Owl Sanctuary, Bressingham Steam Museum, Hollowtrees Farm on four different weeks throughout the holidays. We have also invited wild science, and nature's experience company to host two more sessions. One to be held at the Blackbourne, and the other at Lukeswood!



We are very excited to be able to hold these lovely sessions for our volunteers and regular members.

All six sessions are fully booked, and all have accommodated 40 families each week.

It's thanks to the amazing funds raised at the Elmswell Baby and Toddler Group Nearly New Sale that we are able to offer all events at a heavily subsidised rate, making them affordable for all families, and provide everyone an opportunity for a great day out.

Registration for the Nearly New Sale on September 21st is now open.

We welcome sellers, buyers, cake bakers and volunteers. All registrations are now completed via the Google form - please see QR code on the poster - one form for all!

We wish everyone a wonderful summer holidays and welcome new families coming along to group in September!

Next terms activities include; bury soft play, a Halloween special event, Christmas disco, Christmas special, and whatever else takes our fancy!

We'd like to wish all the children moving on to reception, or nursery the best of luck for the future! It's been a pleasure being part of your pre school learning.



Woolpit Health Centre wish to remind patients that we have increased capacity for disabled and parent/child parking.

For patients wishing to use the Community Car Park, please note this cannot be accessed via the Health Centre Car Park. The entrance is accessed from Clay Pit Close/Beaker Place, via Old Stowmarket Road.

A PERFECT VISION

Here are the 5 main advantages of Vision blinds:

- 1) The Vision blind by Louvolite, otherwise, copies of these are known as the day and night blind. (beware of cheap imitations) are the perfect way to allow you to keep your privacy while still letting in as much natural light as possible. It's also a great way to reduce the glare of the sunlight.
- 2) They are made up of two thermal fabrics to ensure that it keeps your room warmer in winter and cooler in summer.
- 3) They are a low maintenance and made to last.
- 4) They are available in a huge range of colour options and finishes.
- 5) They are contemporary, stylish, and elegant.



Give us a call or pop into one of our showrooms to discuss your window dressing needs...

We are located on...

**79 Northgate Street
Bury St Edmunds
IP33 1JD**

**2-4 Old Station Road
Newmarket
CB8 8DN**



Bury St Edmunds: 01284 753310

Newmarket: 01638 665656

Cambridge: 01223 297177

www.hartwellblinds.com

e: info@hartwellblinds.com





Locality Awards:

Now that the General Election is over, the locality grant scheme for 24/25 has re-opened and applications from local community groups are welcome. Do get in touch with either of us for information and/or to discuss options. Further information and application forms are available on the Mid Suffolk website: <https://www.midsuffolk.gov.uk/web/mid-suffolk/w/locality-awards>.

Woolpit-Elmswell Community Path:

We welcome that County Councillor Mellen has recently successfully identified SCC officers able to move forward with this important and long-awaited project. The route was walked in mid-July to identify the key engineering pinch-points, and to draw up strategies to address these. A design is being produced and funding will then be applied for.

Loans for empty properties:

If you know of any long-term empty properties which would benefit from being brought into use, please let us know. There are interest free loans available (the 'Empty Homes Renovation Loan') of up to £20,000. These are designed to help owners of properties (which must have been empty for more than 6 months) to return them to a habitable state and make them available to rent.

The loan covers the cost of repairs, which may include damp proofing, re-

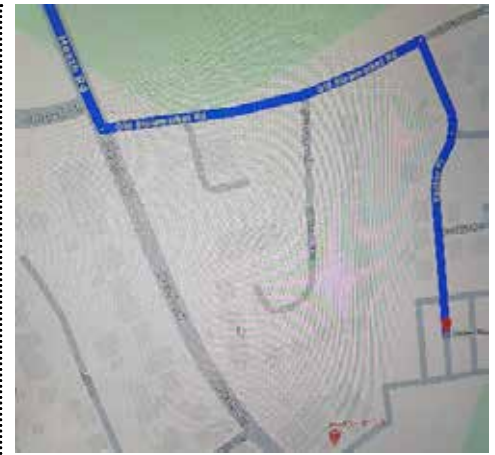
roofing, provision of sanitary facilities, provision of an adequate water supply, repair or replacement of windows and doors, and repairs to structure. Check the Mid Suffolk website for more information: Empty Homes Renovation Loan - Mid Suffolk District Council - baberghmidsuffolk.com

'New' Car Park behind Woolpit Health Centre

We understand that MSDC will continue to manage this car park for the foreseeable future, rather than the Health Centre as originally planned. Regular cleaning is in place, landscaping will be prioritised in the autumn, and EV charging points are due to be installed. Flooding issues at the car park are currently with the District's Enforcement team, who are taking steps to ensure these are addressed.

We are awaiting road signs directing drivers to the new car park – these are to be provided by Suffolk County Council. The car park is primarily intended for Health Centre patients, and is also a 7-minute walk to the village centre.

From Elmswell, turn left off Heath Road at the double mini roundabout onto Old Stowmarket Road (towards Woolpit



Nurseries). Second right onto Clay Pit Close. Keep right along Beaker Place until you reach the car park. There is a footpath to the Health Centre.

Monthly drop-ins:

Jen and Sarah hold monthly drop-in sessions, alternating between the Wesley Café in Elmswell, and Teacups Café in Woolpit. The next dates are:

Tuesday 13th August

10-12 at The Wesley

Thursday 19th September

10-12 at Teacups

District Councillors for Elmswell and Woolpit:

Councillor Sarah Mansel 07860 829517

sarah.mansel@midsuffolk.gov.uk

Councillor Jen Overett 07928 512591

jen.overett@midsuffolk.gov.uk

Keith Avis Printers

For **quality** printing, friendly advice and quotations on any printed item

Call us on 01473 823366

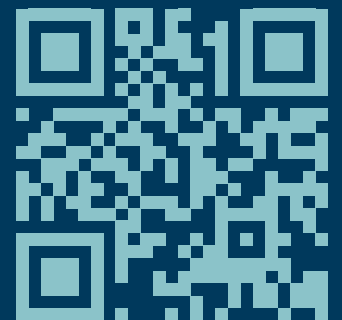
Business Stationery • Display Boards • Banners • Hardcover Books
Softcover Books • Booklets • Magazines • Carbonless Books and Pads
Business Forms • Brochures • Branded Clothing • Merchandise
External Display Boards • Eyeletted Banners

For Anything else, just ask.

PRINTING

DESIGN | PUBLISHING | SIGNAGE

Same Day Service
on many printed items



TBS HIRE

Available to Hire from a Modern Fleet:

- Diggers & Dumpers
- Access Equipment
- Portable Site Toilets
- Landscaping & Garden Machinery
- Concreting Equipment
- Power Tools



Plant & tool servicing and repair also undertaken.

Thurston Rd, Great Barton, Bury St Edmunds, Suffolk, IP31 2PJ

T: 01284 788122 E: info@tbs-hire.co.uk

www.tbs-hire.co.uk



FENCING, GARDENING & PATIOS

All fencing supplied and erected
All garden work...regular maintenance or one-off

- Grass cutting up to 3½ acres
- Garden Clearance
- Tree Felling • Stump Grinding
- Concrete bases laid • Sheds erected
- Turf Laying • Artificial Turf
- Driveways • Pressure Washing
- Garden machines serviced and repaired

No obligation quotes

Contact Andy

01449 403050 077487 85197

wade.andrew63@gmail.com

W
E
L
D
I
N
G
•
T
Y
R
E
S
•
B
R
A
K
E
S



MOT Centre LTD



MOT CLASSES 4 & 7



- CLUTCHES
- BATTERIES
- CAMBELTS/TIMING CHAIN
- SERVICING
- TRACKING
- WHEEL BALANCING

Mkautosmotcentreltd@gmail.com



MOT: 01359 241158/244421

REPAIRS: 01359 245998



The Workshop
Grove Lane
Elmswell
IP30 9HN

Please note as of February
2023 D A Bevan has been
taken over by MK Autos



**Find us on
Facebook.**

•
E
X
H
A
U
S
T
S
•
D
I
A
G
N
O
S
T
I
C
S



ELMSWELL FOX BOWLS CLUB



Now that we are almost through the season, the Tuesday and Thursday teams are practically unassailable at the top of their respective leagues. The Tuesday team are 12 points clear of St Botolphs who are one of their three remaining matches. Four games are scheduled but Hopton have, sadly, pulled out of the league. I won't tempt Providence by claiming that we are 'home and dried' but almost. Dick Burch's Thursday team is 8 points clear of Stanton and Haughley with three games left against teams that are 2nd and 3rd from the bottom of the league. Again, sadly, we are scheduled to play G W Staniforth (Thetford) who have also withdrawn from the league. Monday's Fox 1 have probably lost their top spot but this is not known yet as the website is awaiting the last round of results. They lost 4 points to one against a revitalised St Edmundsbury Blue and although Fox 2 beat Wortham away, it remains to be seen how Coney Weston Swallows did at West Row before we know the exact positions. I fear the worst, knowing the Swallows team. Neil Smart's Fox 2 (the Red Foxes) are having a late surge and should end up in the top half of the table where I expected both teams to be.

On Sunday, July 21st, we held our Open Pairs competition when 6 randomly selected pairs played for a shot at the 2024 Trophy. Jenny Murray / Jess Hudson and Rob Dann / Pete Edmonds fought their way through to the Final which will be played on Finals Day on September 1st.

The season will finish at the end of September so if you wish to join us or give bowls a try, do come along any Saturday or Wednesday after 2pm when you will be made most welcome. Or you could call the number below or speak to any club member that you might know.



Steve Harrison prepares for action



Mark Edwards Jess Hudson and Kathrine Holland in discussion

Peter Edmonds, E.F.B.C. 07860 395720 edmondspeterj@gmail.com

We printed this picture in our June magazine and invited information regarding the Band of Hope on which no details seem to have been archived:

We received this from Dave Hollings:

I remember my late Mother-in-Law telling how as a child she was a member and as such encouraged to be an abstainer from alcoholic drink.

The Band of Hope was founded by Ann Carlisle an Irish Presbyterian lady and a Baptist Minister Jabez Tunnicliffe who started regular children's meetings in Leeds to warn of the dangers of intoxicating drinks and in 1885 formed the Band of Hope, and by 1897 numbered 3.5 million members, both adults and children alike. Probably meeting in nonconformist churches, in 1995 the name was changed to Hope UK

The certificate shown in last month's newsletter mentions the Elmswell Mission Hall which according to a booklet produced by our late member Charles Rudland and Mike Scott was the name by which The Elmswell Baptist Church was known when it was first built in 1887. Later in 1922 the Mission joined The Baptist Union of Great Britain which remains the position today, we also believe the signature on the card is that of a former member of our church I hope that this short history helps to explain what the Band of Hope was.





W. Jarvis & Son Tree Services & Landscapes



*Scan
me!*



**All aspects of tree surgery,
landscaping and fencing undertaken.**

Fully insured, 24hr callout,
council approved contractor
with over 40 years in the industry.

Call for a free estimate & advice

T: 01359 241958

M: 07891 208710 • 07850 046504

Visit our website for information about
our company and the work we do
www.wjarvistreeservices.co.uk

JRP PLASTERING

07795 230 995





The Parish Council meets at least once each month, sometimes excluding August if there is insufficient business, although extraordinary meetings can be called as required at any time.

The July meeting, with 7 councillors present, together with District Councillor Ward Member Jen Overett and the Parish Clerk, Peter Dow, took place at Blackbourne on Monday 15th.

This report is compiled from that meeting by the Parish Clerk and edited by the Council's Editorial Board which comprises the Council Chairman, the Council Vice-chairman and Cllr Sue Roots, elected by her peers to join them. It seeks to cover some of the more interesting or significant items thought to deserve wider public attention. Included, where appropriate, are matters reported to the meeting by external bodies such as the County and District Council Ward Members or as raised at the meeting by members of the public. Further background and reference to subsequent events are included where relevant.

The Minutes of recent Parish Council meetings and Committee meetings, together with the agenda for the next meeting, when ratified, are available online at [elswell.suffolk.cloud](https://www.elswell.suffolk.cloud) and from the Parish Clerk by arrangement. Bound copies of older Minutes are lodged in the Village Archive at Blackbourne and with the Suffolk County Records Office in Bury St. Edmunds. The most recent Minutes from the meeting held on 17th June, as approved at this meeting, are posted in the Council's notice board at Crown Mill.

Suffolk County Council

Cllr Andy Mellen tabled a written report which included the following: **SEND Improvement Plan** Scrutiny Committee met on Thursday 13 June to review the council's priority action plan to improve SEND services. The plan had to be created following the poor Ofsted/CQC inspection report which was published at the end of January. The committee heard about the extra £4.4m funding to recruit more staff, including educational psychologists. There are plans to invest more money in the improvements and this will be discussed at the next Cabinet meeting in July. The Department for Education will be undertaking 'deep dive' reviews into progress, the first one into the timeliness and quality of EHCPs which is due very soon. Among the issues discussed were communication with parents and carers and responses to complaints and the importance of early intervention to support young children with needs as soon as possible. **Council's call for more Foster Carers** Suffolk County Council is taking part in a new initiative for fostering under the banner Foster East along with ten other councils in the region. There is an urgent need for foster carers in the East of England, with more than 7,000 vulnerable children already in the care of their local authority, and a further 150 children coming into care every month. The Foster East initiative is funded by the Department of Education and is a new, collaborative approach to foster carer recruitment and support. Potential foster carers will be nurtured through their fostering journey with their local council and via a buddy network. Fostering is a flexible role with options for short term care from a weekend a month to longer term opportunities, all providing life-changing support for local children. Foster East will give people considering fostering the opportunity to speak to an advisor from 8am to 8pm daily, and the chance to talk to an experienced foster carer to find out more about what the role involves and ask any questions. More information can be

found on www.fostereast.org.uk **Funding Secured to boost Digital Technology Innovation** Suffolk County Council, working with Norfolk County Council and Connected Innovation, has secured funding from Barclays Eagle Labs Ecosystem Partnership Programme to boost support for the region's digital technology sector. This funding will be used for 'The Future', a joint project which aims to support and scale digital technology innovation in Suffolk and Norfolk by a) Developing stronger connections between experienced entrepreneurs and the next generation of regional startups b) Developing a process for identifying, engaging and supporting early-stage startups and integrating them into the community c) Creating more opportunities for startup founders from disadvantaged socio-economic backgrounds by offering stipends to those who would not otherwise be able to commit to their venture full-time. The project will be delivered in Suffolk by Innovation Labs: <https://innovationlabsgroup.com/> **Eco Month at SCC** During June the council has been celebrating Eco Month to celebrate all the work being done internally and externally to tackle climate change, enhance biodiversity and protect the environment. Events have included a market at Endeavour House, a workshop for staff on energy bills, wildlife walks, litter picks and a guided visit to the Ipswich tidal barrier. Council staff were also coached on how they can make a difference in their jobs to reduce waste and printing and promote sustainability. Suffolk County Council has ambitions to achieve carbon net zero by 2030 and has taken many steps already to achieve this, including switching to a 100% renewable energy tariff, moving to electric vehicles for all staff pool cars, and moving street lights over to LEDs, which are 50% more efficient than traditional street lighting. The council has also reduced its gas use by 38%.

Cold Callers Suffolk County Council's Trading Standards have asked residents to be vigilant about

tradesmen knocking on their doors to offer services, after several examples recently of cold callers persuading people to part with large sums of money for unnecessary or substandard work. The council is recommending that residents only use workmen on the Trusted Trader website: <https://trustedtrader.team/Suffolk/about-us> Residents can also protect themselves and their neighbours by nominating their area to become a No Cold Calling Zone – there are now more than 200 of these across Suffolk. In order to nominate your road or neighbourhood, visit <https://www.suffolk.gov.uk/community-and-safety/suffolk-trading-standards/fair-trading/no-cold-calling-zones>

Clerk's Report

The Parish Clerk's Report to the Meeting included the following:

- 1 On 1st July, together with Cllrs Brown and Mansell, I met with Cllr Andy Mellen, officers from SCC, MSDC, a representative from Milestone and representatives from Woolpit to chase the progress, or otherwise, on the proposed community pedestrian / cycle path between Elmswell and Woolpit. This was not the first time that the matter has been addressed by the various agencies and interest groups. I was able to table a quaint drawing from Mid Suffolk's 'Construction and Services Division – Engineering Section,' dated May 2000. Apart from the considerable change at the Woolpit end as a consequence of development in the interim, and the School Road path in Elmswell, the core issues remain the same and remain very difficult to address both in terms of engineering and cost. The group reconvenes on 16th July to, once again, walk the route and discuss the options.
- 2 I met with Bee Taylor, our Communities Team link at BMSDC, on 2nd July to provide an update



PARISH COUNCIL REPORT - JULY MEETING

THIS PAGE IS PUBLISHED AND FUNDED BY ELMSWELL PARISH COUNCIL

on 7 areas of joint interest, noted as:

- a) The Community Affordable Homes on the Tavern site Seeking appropriately experienced valuer so that we can have the land valued, as recommended by our Solicitor, before entering into any negotiation with RP's. CLT advising & chased. NB Mid Suffolk Offer of £2,955 re legal advice expenses accepted 30.04.2024
 - b) Play area EPC accepted advice from their T&FWP, backed by BWMA, for possible split scheme to refurbish existing and establish new area for under 6's on play area further into Crown Mill. Affected residents have been informed that this is under consideration
 - c) Tavern 11 Expressions of Interest's received and all now had full Questionnaire re experience, probity etc for return by 15.07 towards Tender issue 5th August & eventual Contract placed 30th September for Mid-October start.
 - d) Taxi-bus Meet Weds 24th July when full year figs. available. Likely agenda: Size & nature of funding available Possible extension – Thursday to Stow. + Norton? Bus Co's extending coverage based on recent grant aid – can MSDC advise on crossover of services?
 - e) Blackbourne solar PV' s / batteries BT to confirm action needed to trigger CIL payment in September
 - f) Footpaths EPC has promised in principle £11,250k (25%) to SCC re Grove Lane back to Lord's Bridge route – Liaising James Pickerin
 - g) Football club Precise funding direction not yet identified awaiting amalgamation of clubs into Elmswell Community Football Club.
- 3 I met with Victoria Savoulidis, an Archivist from Suffolk Hold, on 3rd July to identify the way forward with regard to an appropriate accessioning, storage and retrieval system for the Elmswell archive which is accumulating, safe but unclassified, in the archive room at Blackbourne. We agreed that the Excel model as used by Lawshall Archives Group would offer a possible way forward and I am now in touch with the group for further information.
- 4 The Options Report commissioned from Anthony Collins, Solicitors, in the matter of the aspiration to build community affordable homes on the Tavern site, requires discussion with registered Housing Providers whose involvement seems, according to the advice

in the Report, inevitable. Before entering any negotiations, Council is obliged to have determined the value of the land as constrained by the proposed use. Land Agents are not keen to advise in these circumstances. However, I have secured 4 recommendations and some positive responses to be pursued as directed by Council.

- 5 The Inspector's Decision which dismissed the Appeal against the refusal of Planning permission for a dwelling on the Council's land adjacent to 10, Crown Mill confirms that one of the protected characteristics which informed the ruling was that the site provided play space needed for young children. The clear need for play provision in this vicinity dedicated to a younger age demographic than that currently offered at Station Road was originally suggested as being deliverable by extending the current fenced area. This has met opposition with regard to the proximity of the queuing traffic at the railway crossing gates and, as indicated in indicative plans from facility providers, the very constrained result in terms of extra space delivered. None of the reasons presented in the Inspector's Report would seem to mitigate against the proposal that the area should continue as community play space but with the provision of play equipment, hence the suggestion at Agenda item 13 that this be further investigated by virtue of a Pre-App discussion with Mid Suffolk.

Planning results

The Meeting noted the results of Planning applications made to Mid Suffolk, the Planning Authority, and of an Appeal to the Planning Inspectorate, being:

DC/24/02079 Erection of single storey extension...**5 Prescott Drive** GRANTED EPC supported

DC/24/01800 Erection of detached out-building...**Knight Manor, Church Road** GRANTED EPC supported

Appeal Ref: APP/W3520/W/24/337813 Against refusal of ref DC/23/03170 originally DC/22/02447 for erection of 2 storey detached dwelling... **2, Rose Lane**...APPEAL DISMISSED

DC/24/01834 Approval of Reserved Matters following Outline Planning Permission DC/23/02699... appearance layout scale and landscaping for the erection of one dwelling...Land adjacent to **The Stables Station Road** EPC supported
DC/24/02237 Erection of extension, conversion of garage...erection of new

garage...**Grange House, 112 Bennett Avenue** GRANTED EPC supported

Planning Applications

The Meeting agreed to rely upon the professional judgement of case officers and not to comment on the technicalities of Reserved Matters Applications ref. DC/24/02866 at **White House Barns** on Ashfield Road and DC/24/02890 at **Willow Farm**, Ashfield Road.

Elmswell Tavern funding

The Meeting agreed that the £50k shareholding in Elmswell Community Enterprise be transferred to the ring-fenced Elmswell Tavern refurbishment project fund and that the amount be doubled to reflect the original intention as agreed in 2022.

Play Area

The meeting agreed to seek pre-application Planning advice towards an Application seeking approval to site play equipment on the Council's play area adjacent to 10 Crown Mill.

Community Affordable Housing

The Meeting agreed to delegate the Chairman and Clerk to commission a valuation on the site to the rear of the Elmswell Tavern as a precursor to approaches to Registered Housing Providers towards the building of community affordable homes there.

Next meeting

It was noted that the next meeting was nominally scheduled for 16th August should sufficient business come forward, beginning at 7.30pm at Blackbourne. Otherwise, the next scheduled meeting was noted as 16th September. The public are, as ever, welcome to attend all Council meetings and the agendas will always offer opportunities for questions and comment. Agendas are published online at elmswell.suffolk.cloud and on the Council's notice board at Crown Mill and hard copies can be collected from the Council Office at Blackbourne.



BLACKBOURNE & WESLEY MANAGEMENT ASSOCIATION

The BWMA advises Council on the day-to-day administration of the Blackbourne and Wesley facilities. Members have been working on graphics to be printed on large canvas hangings to decorate the Wesley Meeting Room. This is one such, currently with the printer and all due for display in the Autumn.



This shop was split into 2 in 1998 - the building is now the chip shop and hairdresser. The single-storey extension which houses the takeaway was added later. There was a bakery in an outhouse at the Tavern which had the words 'BREAD' built into the brickwork. The baker was John Henry Laver who also ran the pub, but this baker's shop was variously run by Hicks, Faiers, Rand and Clarke over the years. The pony and trap probably belongs to George Smith who lived upstairs at the back of the shop and delivered bread as well as general carting.

At this time, the record shows that other traders in Elmswell included 8 farmers, 5 millers and agricultural merchants, 3 shoemakers, 2 builders, 2 grocers, 2 coal merchants, a horse slaughterer, and a cricket bat manufacturer.

PLASTIC FREE JULY

This year's Plastic Free July campaign focuses on the small changes each of us can make to reduce plastic waste using the slogan 'Small steps, big difference'.

Getting involved will help you find great alternatives to single-use plastic that can become new habits forever. Take the pledge to avoid single-use cups, plastic drink bottles, or plastic food wrap.

These top 3 tips are a great way to begin!

- Refill re-usable water bottles from the tap
- Bring a re-usable cup or sit in and enjoy a real cup
- Switch from plastic wrap to re-usable containers or wax wraps

Find out more about Plastic Free July

<https://www.plasticfreejuly.org/>

or learn more about reducing plastic waste

<https://suffolkrecycling.org.uk/reduce-reuse/plastic-waste>



Enquiries on any Parish Council matter are invited to the Clerk, Peter Dow, at The Council Office, Blackbourne, Blackbourne Road, IP30 9UH – right next to the car park and with wheelchair access.

**Staffed Monday – Friday 9.00am – 4.00pm
and other times by arrangement**

clerk@elmswell.suffolk.gov.uk
Tel. 244134 www.elmswell.suffolk.cloud



Future Council Meetings

Notice of all meetings and agendas is posted on the Council's notice board at Crown Mill and in the community notice board at the Co-op.

Aug 19th	Sept 16th	Oct 21st	Nov 18th	Dec 16th

as
necessary

Meetings are held at
Blackbourne,
beginning at 7.30 unless
otherwise notified

VILLAGE INDEX



Useful contacts for community groups & others...feedback is essential.
Do be in touch to correct or add details or to suggest someone else deserving of listing.

Amenities Association	Jean Barker (Sec)	eea@elmswell.org.uk	241135
Art Club	Eddie Douglas	edward.douglas2@gmail.com	
Baby & Toddler Group		elmswellbtgroup@gmail.com	
Baptists	Dave Hollings	davehollings@btinternet.com	241323
BATS (Badminton & Table Tennis)	Mike Burgess Wilson	burgesswilsonmike@gmail.com	
Beavers	Ruth Salmon	ruthcourt4@hotmail.co.uk	
Bingo at Blackbourne	Brian Hawes		07761 125093
BWMA	Peter Edmonds (Sec)	edmondspeterj@gmail.com	07860 395720
Blackbourne – all enquiries	Parish Council office	clerk@elmswell.suffolk.gov.uk	244134
Brownies	Gemma Sutton	elmswellbrownies@hotmail.com	
CAB		advice@midsuffolkcab.org.uk	01449 676060
Carpet Bowls Club	Frank Boxall	jf.boxall@btinternet.com	
Christians Together in Elmswell	Peter Goodridge	elmswellrector@gmail.com	240512
Community Speed Watch	Marie Spampinato	mariespampinato@hotmail.co.uk	07769 715209
Companions	Linda Waspe	linda@labbott.plus.com	
County Councillor	Cllr Andy Mellen	Andy.Mellen@suffolk.gov.uk	
Cricket Club	Ben Whatling (Captain)	benwhatling@mail.com	07760 174811
Cubs	Mark Pernot	mark.pernot@gmail.com	
District Councillor	Sarah Mansell	Sarah.Mansel@midsuffolk.gov.uk	07860 829517
District Councillor	Jen Overett	Jen.Overett@midsuffolk.gov.uk	
Elmswheelians	Trevor Sadler	trevor.sadler@dsl.pipex.com	240908
Elmswild	Mary Feeney	info@elmswild.org.uk	241901
Exchange Afternoon WI	Carol Blissett	carolblissett@hotmail.co.uk	242884
First Responders	Merv	merv.smith@tiscali.co.uk	07909 006 496
Football	Chris Edmonds	edddd101@gmail.com	
Fox Bowls Team bowls at Blackbourne	Rob Dann	rccsdann@btinternet.com	07917 013846
Gardening Club	Nick	elmswellgadmin@btinternet.com	01359 242601
Guides	Viv	elmswellguides@outlook.com	
Health Centre - Woolpit			240298
History Group	Stella Chamberlin	stellachamberlin@yahoo.co.uk	
Ladies Voices (Choir)	Anna Wilton Mills	annawm63@gmail.com	
Library	Miles Row - Manager	Elmswell.Library@suffolklibraries.co.uk	240974
Little Elms	Paula Reynolds / Samantha Willers	info@littleelms.co.uk	240491
Newsletter	Editorial office	eea@elmswell.org.uk	244134
Over 55's Club	Diann Armstrong	Mayfield, Wetherden Road	241002
Parish Council	Parish Clerk	clerk@elmswell.suffolk.gov.uk	244134
Police Emergencies			999
Police; non-emergencies	Mid Suffolk South SNT	headquarters@suffolk.pnn.police.uk	101
Poor's Land Charity	Peter Goodridge	elmswellrector@gmail.com	240512
Power cuts		Powwercut105.com	105
Rainbows	Jen & Lizzie	elmswellrainbows@yahoo.com	
Royal British Legion	Norman Plumpton (Biff)	nplumpton@aol.com	07707 524722
School	Mrs Ash	admin@elmswell.suffolk.sch.uk	240261
Scouts	Paula Hollings	dc@stowmarketscouts.org.uk	07828 562485
St John's Church	Peter Goodridge	elmswellrector@gmail.com	240512
Sewing Bee	Isabel Burgess	isabel.burgess@live.com	
Village Tree Warden	c/o Parish Clerk	clerk@elmswell.suffolk.gov.uk	244134
Wesley – all enquiries	Parish Council office	clerk@elmswell.suffolk.gov.uk	244134
WI - evening	Tricia McNeeney	triciamcneeney@gmail.com	241197
Youth Football	Wayne	wsast@hotmail.co.uk	

**Enquiries on any Parish Council matter are invited to the Clerk, Peter Dow, at The Council Office, Blackbourne, Blackbourne Road, IP30 9UH - right next to the car park and with wheelchair access. Staffed Monday - Friday 9.00am - 4.00pm and other times by arrangement.
clerk@elmswell.suffolk.gov.uk Tel. 244134**

**IF YOU ARE NOT HAPPY THAT YOUR DETAILS APPEAR HERE,
PLEASE DO BE IN TOUCH VIA eaa @elmswell.org.uk**

What's On in Elmswell ?



To be included in our events diary make sure you send separate notification of your announcement.

For a full year's calendar of what's booked at Blackbourne, please go to the Parish Council website at www.elmswell.suffolk.gov.uk - it might help you in planning dates for your events.

August 2024

- 1 Over 55's Club Outing to The Hut at Felixstowe
- 7 Exchange WI 2.00pm at Wesley. Lighting the Fuse. Speaker Lucy Lewis
- 15 Over 55's Club Bingo
- 29 Over 55's Club Carvery day out **CANCELLED**
- 30 Bingo - Doors open 6.30 eyes down 7.30 all welcome

September 2024

- 4 Exchange WI 2.00pm at Wesley. Songs from the Sixties. Barry, Pete and Nicky
- 12 Food 'n' Friends at Elmswell Baptist Church midday
- 12 *Annual Subs Due* ELMSWELL HISTORY GROUP, 7.30pm; in Wesley Chapel. Speaker Neil Langridge: Hop Cultivation in Suffolk
- 12 Over 55's Club Harvest Supper and Bingo
- 17 Elmswell Gardening Club 'Before & After' - landscaping ideas. Bradley Morris
- 26 Over 55's Club Susie Q entertains **OPEN EVENING**
- 27 Bingo - Doors open 6.30 eyes down 7.30 all welcome

October 2024

- 2 Exchange WI 2.00pm at Wesley. Fraud Awareness. Speaker Jane Riches
- 10 Food 'n' Friends at Elmswell Baptist Church midday
- 10 ELMSWELL HISTORY GROUP, 7.30pm; in Wesley Chapel. Speaker Barbara McElroy: Framlingham, Castle on the Hill
- 10 Over 55's Club Bingo evening
- 24 Over 55's Club Music with Gwyn Pritchard **OPEN EVENING**
- 25 Bingo - Doors open 6.30 eyes down 7.30 all welcome

November 2024

- 6 Exchange WI 2.00pm at Wesley. History of the British Legion and the Poppy Appeal Speaker Mandi Cox-Osborne
- 7 Over 55's Club Hot Dogs followed by Bingo
- 14 Food 'n' Friends at Elmswell Baptist Church midday
- 14 ELMSWELL HISTORY GROUP, 7.30pm; in Wesley Chapel. Speaker Andy Peachey: Archaeology on Anglia One's Cable Route

- 21 Over 55's Club Brian Mann entertains **OPEN EVENING**
- 29 Bingo - Doors open 6.30 eyes down 7.30 all welcome

December 2024

- 4 Exchange WI 2.00pm at Wesley. Christmas Celebrations. Hosted by the committee
- 5 Over 55's Club Concert by Norton Salvation Army Visitors welcome
- 12 Food 'n' Friends at Elmswell Baptist Church midday
- 12 ELMSWELL HISTORY GROUP, 7.30pm; in Wesley Chapel. Performers 'Chanters Jigge': Our Merry Christmas Revel - an entertaining evening of live music and seasonal songs, played on traditional instruments
- 13 Bingo - Doors open 6.30 eyes down 7.30 all welcome
- 14 Over 55's Club Christmas Party followed by entertainment with Susan Jayne

STOP PRESS

Regular sessions at Blackbourne & Wesley include:

KARATE with Lewis - Friday 5.00 - 7.00 info@greathedma.com

JAPANESE JUJUTSU / SELF DEFENCE - Monday & Wednesday 6.30 - 8.30 ryoishintowaryuheiho@gmail.com tel. 07711 680262

BABY & TODDLER GROUP - Monday mornings elmswellbtgroup@gmail.com

BATS- badminton / table tennis / pool at Blackbourne Friday nights 7 - 9.30 simon@coakleyandtheaker.co.uk

BOWLS - barryhayward1902@gmail.com tel. 240951

GUIDES - elmswellguides@outlook.com

FOOTBALL - Chris Edmonds edddd101@gmail.com

RAINBOWS - elmswellrainbows@yahoo.com

JUNIOR FOOTBALL - smyth98@hotmail.com 07717 841591

CUBS Tuesdays 6.15 - 7.30 - mark.pernot@gmail.com

BEAVERS / SCOUTS - Wednesday 5.45 - 9.15 ddc.paula@stowmarketscouts.org.uk

OVER 55'S - every other Thursday 6.30 - 10.30 Diann Armstrong tel. 241002

CIRCLE DANCING - Thursdays 1.45 - 3.15 jenlerner@gmail.com

TREFOIL GUILD - 1st Tuesday monthly lesley.grount@btinternet.com

MARDLE QUILTERS - last Friday monthly carpajak@aol.com

MOO MUSIC - Fridays 12.45 - 3.15 bury@moo-music.co.uk

WI - evening at Wesley 2nd Tuesday monthly 7.30pm triciamcneeney@gmail.com

WI - afternoon at Wesley 1st Wednesday monthly Carol Blissett carolblissett@hotmail.co.uk

ART CLUB at Wesley every Tuesday 9.00 - 12.00 Eddie Douglas edward.douglas2@gmail.com

HISTORY GROUP at Wesley 2nd Thursday monthly 7.30 stellachamberlin@yahoo.co.uk

GARDEN CLUB at Wesley 3rd Tuesday monthly 7.30 elmswellgadmin@btinternet.com

CARPET BOWLS - Wednesday 7pm at Wesley - jf.boxall@btinternet.com

COMPANIONS - every other Friday 10 - 12 at Wesley - linda@abbott.plus.com

PILATES - Monday & Friday mornings - suzanne@triformpilates.co.uk

BINGO - Blackbourne, last Friday monthly doors open 6.30...eyes - down 7.30

ARTS SOCIETY OF WEST SUFFOLK first Tuesday monthly, October-June. Diana Hollins 01449 736930 theartssociety-westsuffolk.org.uk

If we've missed you out, do let us know...all enquiries to Ann at the Council Office Tel. 244134 Email clerk@elmswell.suffolk.gov.uk

Your Newsletter Fact File

For the next 3 months we need copy by: August 28th, September 25th, October 23rd.

Contact us on **01359 244 134** for all Amenities Association business, Newsletter and adverts.

Our new email address is EAA@elmswell.org.uk Your editors: Jean Barker, Maggie Bushell, Peter Dow

Published on the first Friday of every month by the Elmswell Amenities Association

Reg. Charity No. 304879. 2,000+ copies delivered free to households and to businesses in the community. A volunteer enterprise entirely supported by advertising.

PLEASE SUPPORT OUR ADVERTISERS



BULBS - ALTERNATORS - SHOCK ABSORBERS - COIL SPRINGS - WHEEL ALIGNMENT - REPAIRS - MOT PREP - WHEEL BALANCING - PUNCTURE REPAIRS

PROMECH

We cater for ALL your vehicle needs

SERVICING

ProMech Elmswell

MOT CENTRE

ProMech Elmswell

REPAIRS

ProMech Elmswell

DIAGNOSTICS

ProMech Elmswell

EXHAUSTS

ProMech Elmswell

TYRES

ProMech Elmswell

SUSPENSION

ProMech Elmswell

TRACKING

ProMech Elmswell

CLUTCHES

ProMech Elmswell

BRAKES

ProMech Elmswell

BATTERIES

ProMech Elmswell

AIR CON REGAS

ProMech Elmswell

RECOVERY

ProMech Elmswell

COURTESY CARS

ProMech Elmswell

CAMBELT/ CHAIN REPLACEMENT

ProMech Elmswell



KEY BATTERY REPLACEMENT - STARTER MOTORS - SPARK PLUGS - ELECTRICAL FAULTS - AIR BAG FAULTS - ENGINE MANAGEMENT LIGHTS - TPMS RESET

Most manufacturers recommend you service your car's air-con every two years, but many people wait until it's not blowing cold air. **Have you??**

Poor working air con will work the engine harder, thus using more fuel. It's not worth putting off a system check. **Call and book yours today.....**



01359 242420

Find us at: Station Road Industrial Estate, Elmswell, IP30 9HR