

'Like a friend
dropping in'



The Elmswell Newsletter



More than thirty years of Parish Record... all the Community News...

JUNE 2024

On line at elmswell.suffolk.cloud



Light fantastic

Photo: Danny Hewitt

Published on the first Friday of every month by the Elmswell Amenities Association Reg. Charity No. 304879.
2500 copies delivered free to households and to businesses in the community. A volunteer enterprise entirely supported by advertising.

PLEASE SUPPORT OUR ADVERTISERS

EAA@elmswell.org.uk



Our editorial is designed to inform and to encourage debate.

If you wish to comment, please do so via the office or by email at; eaa@elmswell.org.uk

We reserve the right to edit any such contributions that we may use in a subsequent edition.

Happy New Year

For, without balloons, party poppers or drunken uncles we stagger past midnight on 30th April into a new Local Council administrative year. Calm down, please do.



With a view to encouraging a reassuring and peaceful 12 months to come we suggest an innovative party game. Why not, to see the Old Year out, try reading some of the Annual Local Council Reports which are to be found on line? This might serve as a substitute for Jules Holland (for older readers, perhaps Jimmy Shand and his Band?) They offer an equally jolly farewell to 12 months past and a well-meaning attempt at promising hope for 12 months yet to come? Always, of course, from the Elmswell perspective.

Thus we highlight a few morsels, random snippets untimely ripped from those 3 Annual Reports together with an occasional comment, as overheard at Wesley...



Our County Councillor, Andy Mellen, draws our attention to the following:

➤ Many may have

noticed that, 'the drainage systems in the county were unable to cope with the (recent) volume of water'. An extra £1m is committed to try to improve the system. Instead of 3 or 4 annual inspections of known trouble-spots, this year there will be more like 100 engineer visits and reports. *Those in the know suggest that, as well as gully clearing with a 'sludge-gulper', unless the horizontal connections are pressure-cleaned, the water can only get away by evaporating.*

➤ The much heralded new Highways contract (was Kier, now Milestone) has had time to become established and improvements expected include, 'undertaking other works needed in the same geographical area when they are called out'.

This is the conundrum posed as, "why don't you fix the pothole next door to the one you've just filled? Fans of Alice in Wonderland will be disappointed at a promised lurch towards common sense. Meanwhile, a new 7 year contract for street lighting maintenance has also begun to take effect...

... although this has not yet been too dramatic and Elmswell still has some lights which have been out for a couple of years past.

The long-standing single-party hefty majority on the council allows for little innovation from the opposition. One motion which succeeded was the signposting of available public benefits more widely to those needing them. Over £15m of meanstested money is unclaimed annually.

A couple of ideas from the minority parties which were squashed include 'Roofs before Rural' seeking to have solar panels installed on buildings and brownfield sites rather than on good quality agricultural land and making it easier for communities to lower speed limits on rural roads.



Our District Councillors, Sarah Mansell and Jen Overett include:

- The nationally acclaimed news that Mid Suffolk has become the first District / Borough council in the country to be run by the Green Party. They pledge to put environmental and social responsibilities at the heart of everything the Council does. *Those waiting for silly extremism to wreak havoc have, so far, been disappointed. Those hoping that there might be change elsewhere with regard to our Parliamentary representation must wait until 4th July...*

- Issues around sustainable transport have come to the fore and a grant scheme of £600,000 has been made available to help set up options across the District.

This has provided security for the innovative Taxi-Bus scheme administered from Elmswell and gives hope to the ambition to expand into more Demand Responsive Transport.

- The Cosy Homes scheme was launched with a budget of £2million towards insulating homes for free and a further £1million to upgrade council houses. A new focus is improving sheltered housing as part of the new Carbon Reduction Management Plan. *The 'Winter Warmer' initiative is related and Elmswell took full advantage at Wesley*

with its grant-aided community days culminating in Chips at the Chapel.

- Direct help by way of Locality Grant Funding went to the Bowls Club, the History Group, the Baptist Church, the Food Bank and Little Elms Pre-School



Fred Pallett, our Parish Council Chairman included:

- Noting the formal hand-over of the 6 acres of amenity land at Turners' Field abutting Blackbourne, privately purchased and gifted to Elmswell by developers Stan and Ian Turner who built many houses in the village in the 1980's

- Moves towards finally achieving the long-term aim of community affordable homes on the land to the rear of the Tavern where the advice of a specialist lawyer is indicating ways forward with some protection against the dreaded, 'right to buy'. *Right to buy is just the slippery slope to Airbnb.*

- The game-changing input of £500,000.00 of developer contribution funding via Mid Suffolk to the Elmswell Tavern project, as so strongly supported in the recent and wide-ranging community consultation, allowing the suggestion that building could start this year.

- Further development of other initiatives from the developer funding consultation results, including the refurbishment of the Crown Mill play area, upgrading of some key footpaths linking the village north & south and support for the newly amalgamated Elmswell Community Football Club bringing together the senior and junior groups.

It's tempting to think that all of the above pales into insignificance when considered against our choice on 4th July. Surely that's the vote that matters?

Surely that's where the real decisions are made?

Our brief foray into the activities of the lower tiers of governance - drains and taxi buses, insulation grants and community pubs, play areas and speed limits – suggests that our local councils and our local volunteer councillors can be very effective in very important areas.

Don't forget to, 'think local as you vote national' - and don't forget your photo ID.



ELMSWELL ART CLUB

I am writing this article just after the May Bank Holiday and hope that our readers had a nice weekend (despite the changeable weather!). Our Art Club meeting on the Tuesday following the bank holiday was very well attended with 24 of our members enjoying a very sociable morning's painting, sketching and drawing. New members are always welcome, so why not come along to one of our meetings to see if you would like to join us?

I am always amazed at the range of subjects, styles and materials that are used by our members and this month's pictures are great examples of these.

A few of our members use their artistic skills to produce greetings cards for their family and friends; below are examples of some that have been created recently. The first one is a lovely seascape scene painted by Brenda Thompson using the "wet-in-wet" watercolour technique to produce an impressionistic style;



One of our newer members, Ken Smith, has created a set of cards using Derwent "Coloursoft Pencils" and the following picture shows 3 of his works;



Many of our members love to paint wildlife images too; the first is a watercolour by Anne Mawson which captures the rather threatening head of a buzzard;

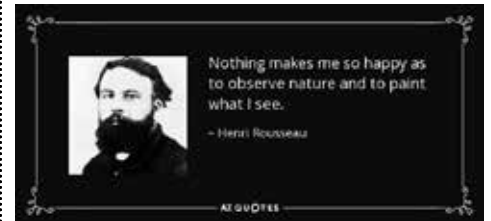


The second wildlife work is a charming pastel image of chimpanzees and this was produced by Keith Ball. Keith has really brought out the characters in the

faces of the parent and child of these great apes.



One of the greatest wildlife artists was the French artist Henri Rousseau (1844-1910); I thought the below quotation was very appropriate;



Finally, back in March we visited Gainsborough's House in Sudbury - the birthplace of Thomas Gainsborough (one of the most important British artists in the 18th Century), which is now a museum. Since our visit, the building has won a major award - it has been named winner of Building of the Year in the Royal Institute of British Architects' (RIBA) East Awards.

The RIBA jury said it was impressed to see "a significant regional and national museum emerge from the adaptation of what was previously a small, local resource".

Eddie Douglas

ELMSWELL ART CLUB MEETS EVERY TUESDAY FROM 09:00 TO 12:00 AT THE WESLEY AND NEW MEMBERS ARE ALWAYS WELCOME.



'I'm in PAIN!' Can Chiropractic help me?

Your initial visit will include:

- A consultation with the Chiropractor
- A thorough spinal examination with Orthopaedic & Neurological tests
- A confidential report of findings
- An explanation of our treatment programme if we determine Chiropractic can help you.

Call TODAY for an appointment

Please visit our website for further information

www.abbeychiropractic.com

Registered with The GCC, RCC, SCA & BCA



6 Glastonbury Road
Bury St Edmunds,
IP33 2EX

01284 706570



7 Stowupland Road,
Stowmarket,
IP14 5AG

01449 612620



WESLEY
Coffee Shop...

where you are warm and welcome

**Weekdays 9.00 – 4.00,
Saturdays 9.30 – 4.00**



As a balance to last month's football-themed cover picture which was, predominantly, yellow and green, it is suggested that we mark the recent success of another local team who favour blue in the kit that they will now carry into the Premiership. As the photo confirms, they enjoy some support in the village.

Justifiably joyful,
and Well Done Ipswich.



BJW PLUMBING & HEATING YOUR RELIABLE LOCAL PLUMBER

- Boiler Servicing
- Central Heating Installation
- Maintenance & Repairs
- Bathroom Suites, Showers, Tiling
- Install Washing Machines/Dishwashers
- Burst/Leaking Pipes
- Water Softeners
- General Plumbing Needs



GAS Safe registered 200169

BARRY WARD: 01449 615339/07734 872549

Ear We Go
Mobile Ear wax removal
Microsuction & Irrigation

*My name is Georgie
Please call, text or email for an
appointment
07921550958
Earwego12@gmail.com*

KH

Kevin Hollings
KITCHEN STUDIO



Unit 14 Lodge Works, Stowmarket Road,
Old Newton, IP14 4EE
01449 257160 www.kevinhollings.com
info@kevinhollingskitchens.co.uk

ELMSWELL & Maintenance Services ELECTRICAL

For all your Electrical jobs big or small call
Grant on 07597385744 or
email elmswellems@gmail.com





ELMSWELL WI

Elmswell WI met for their Annual Meeting in May. Helen Lindfield from Suffolk West Federation of WIs also came to chair the business part of the meeting. We elected a new President and committee, and all the reports were given and approved by members. We were reminded during these report of all the activities and speakers we had during the year. What a varied programme it was! In June it was all about the bees and in July we celebrated our 90th birthday with a fish and chip supper. In August we heard about the Real Robin Hood and September found us having a go at British Sign Language. We got a bit tipsy in October when the Suffolk Gin Distillery came with a selection of their gins for us to try. In November we had Mandi from the Royal British Legion telling us about the wonderful work they do. Some of our members had helped with selling poppies at the Co-op in the village. We also put up our poppy display on a tree by the Wesley December and It's Christmas. We made some decorations, while drinking a glass of bubbly, had a quiz and sang some carols. In January we had two items to inform and entertain us. Firstly, we heard about Our Special Friends, a charity where volunteers take their dogs into people's

homes to comfort some and help others with their mental state, then we were up on our feet learning to do a dance to a Bee Gees song.

'The Knicker Lady' came in January to tell us about the charity she is involved with who help those in the Ukraine war zone and the refugees on the Greek islands. She told us the ladies have no knickers, so we collected over 60 packs to go to Ukraine.

In March five ladies from The Women's Refuge in Bury came to tell us some harrowing stories and how they help the women and children. Three of our members went to decorate a room in the Refuge. We have produced a paper quiz which we are running to raise money for the Refuge.

A wonderful aroma wafted around the Wesley in April when we had Lily from the Walking Wok to cook us one of her recipes. We were able to taste the result and it was delicious!

We did a lot of other things during the year.

We attended the group meeting held at the Blackbourne organised by the afternoon WI.

We ran the refreshments at Elmsfest in September and obviously did it well as we have been asked to do it again this year.

We planted some trees at the Blackbourne when Elmswid asked for volunteers and put some items in the Time Capsule that the Parish Council had organised to be put beneath the trees.

We organised a paper quiz for Elmswell Food Bank and raised over £240 and continue to donate items for them each month at our meetings.

We have been on a visit to the YumYum Tree Fudge factory and were able to sample all their different flavours. We have also been on a guided tour of the cathedral.

We started to have Coffee & Chats this year at the Wesley. They have been very popular, and the day moves on each month so everyone get a chance to come.

We have gained a lot of new members over this past year so we must be doing something right!

When the business part of the evening was over, we refreshed ourselves with Prosecco and then had a game of Bingo.

Our next meeting is on 11th June when we will have a go at Indoor Kurling. Visitors are always welcome, so if you fancy a fun evening come along to the Wesley a 7.30pm. You will be made very welcome.

Rosie Collins
01359 241652

theWI
INSPIRING WOMEN

ELMSWELL GARDENING CLUB

On Tuesday 21st May we were treated to an unusual, for the Gardening Club, and most enjoyable evening lead by Bryan Thurlow entitled 'The Perennial Mr Potter'.

He entered the hall in the character of Mr Potter, a gardener born at the turn of the 20th century. Not only did we learn about gardening practices at that time, but there were a great many references to British society and events during his long life.

My Potter recounted various illnesses during his childhood, including rheumatic fever, which prevented him from following his father into labouring on a local farm. He recounted stories of attending the coronation in London and entering a local flower show, as a child, where he created a knot garden on a plate and won first prize.

He explained how his interest in gardening grew thanks to his father offering him a border at the front of the house to grow flowers. At thirteen years of age he was offered a job as a 'Gardener's boy' at a local house owned by two spinster sisters - The Miss Tindles. (Many women of that generation remained unmarried largely due to the

huge numbers of men who died during the First World War). Mr Clark, the head gardener taught the young Mr Potter all he knew and in time Mr Potter was made head gardener.

It was a really fascinating evening and gave us a real sense of life during that time in our history, as well as offering some gardening tips along the way.

On the 18th June we will be welcoming Paul Spraklin who is giving a talk about Succulents.

Visitors are always made very welcome.

Should you happen to catch a train from Elmswell, you will notice that the flowers in the tubs on the platforms are being renewed. The Gardening Club members, directed by Nick, water the plants during any dry spells. We've always been very pleased with how they look, and this year will be particularly interesting to see how they do as there's been so much rain. Will it continue or is a drought to follow?

For further information please contact Nick on 01359 242601 or e-mail: elmswellgadmin@btinternet.com



PLAY EQUIPMENT FOR SALE AS SEEN

Sealed Bids to Parish Council Office

By 14th June



JRP

PLASTERING

07795 230 995



W. Jarvis & Son
Tree Services
& Landscapes



Scan me!



**All aspects of tree surgery,
landscaping and fencing undertaken.**

**Fully insured, 24hr callout,
council approved contractor
with over 40 years in the industry.**

Call for a free estimate & advice

T: 01359 241958

M: 07891 208710 • 07850 046504

Visit our website for information about
our company and the work we do
www.wjarvistreeservices.co.uk



ELMSWELL EXCHANGE W.I.

Mary welcomed members to our AGM.

This month our speaker was Rachel Thomas from the Bury Rickshaws. She also belongs to the Newmarket W.I. Rachel explained that Copenhagen had a scheme so Bury's scheme was set up in a similar way. Originally there was only one rickshaw and started with three volunteers. This was in April 2018 and other volunteers were sought. Originally these were from various cycling groups and mostly retired people. All volunteers undergo lots of training and when volunteering wear a high viz vest. Two other rickshaws were purchased and one built for wheelchair users. They are like electric bikes so as to make it easier for the volunteer pedalling especially as often two passengers. It is difficult

for the cyclist to hear passengers so there are volunteers to accompany solo passengers. Rachel pointed out the rickshaws were not for tourists but used to take people from care homes who often didn't go out and visited Abbey Gardens. During lockdown the service stopped but was used to deliver medication and shopping. They were also used to take people for their Covid jobs with a Perspex screen on the rickshaws as well as other safeguards.

The rickshaws took part in the torch rally in 2022 for the Jubilee. They have also been given the Queens Award as well as receiving a thank you on the One Show.

Their funding comes from Bury council as well as various businesses who support them in several ways.

The scheme gives pleasure to many people who don't go out very often and helps to alleviate loneliness.

The competition was a decorative fan. 1st was Jayne Knights, 2nd Lesley Reed and 3rd was Jan Clark.

Next month our speaker is Peter Rutt. His talk is called "From Muckle Flugga to Elmswell. A birdwatching journey from Shetland to my back garden."

The competition is jewellery or an accessory with a bird or birds on it.

Visitors and new members are always welcome.

Carol Blissett
242884



OVER 55'S CLUB

Our last meeting on April 28th featured Harry Isacc Prestley performing as «Elvis» in the course of the evening he spotted who he thought was Kenny Rogers in the audience a great night was had by all.

Our first meeting in June is our trip on the Lady Orwell from Ipswich down the River to Felixstowe with afternoon tea being served lets hope it is a nice day.

On the 20th we welcome G & T as our entertainers when we will require names for catering purposes for the next meeting on July 4th.

A further reminder that we will be supporting the Wesley Ukelele Band at their JUNE in TUNE event on June 29th at the Blackbourne with Tombola and a Cake Stall.

More information ring Diann 241002

*Alan Phillips suavely channels Sweet Music Man
Kenny Rogers as he duets with Elvis*



Keith Avis Printers

68 High Street, Hadleigh, Ipswich IP7 5EF
jason@keithavis.co.uk | 01473 823366

PRINTING
DESIGN | PUBLISHING | SIGNAGE



Need a Display Board?

Correx: A lightweight, rigid corrugated sheet, favoured by estate agents.

Dibond: A sandwiched panel of two aluminium sheets with a rigid core.

Foamalite: Light foam centred board, ideal for internal displays.

Foamex: A solid, strong yet lightweight material, extremely versatile.



Correx



Dibond



Foamalite



Foamex



Andrew Bingham

INDEPENDENT FUNERAL SERVICE

Local Caring Independent Funeral Service

www.andrewbingham.co.uk
01449 771666



Golden Charter
 Funeral Plans

The Nutshell, Milton Road South,
 Stowmarket, IP14 1EZ



Don't just take our word for it ...

“ From the outset the service we received was prompt, efficient, first class and friendly - with good feedback. ”

“ Your service was helpful & professional from start to finish. We were most impressed. ”

“ My house sold within days of you putting it on the market and thereafter you were always on the end of your phone, in order to answer my many questions. ”

“ Your knowledge of the local property market proved invaluable and your attention to potential purchasers, a great time saving asset. ”

“ I have used Coakley & Theaker Estate Agents to sell three properties, all of which they handled extremely professionally. ”

“ We can only praise Simon for the solid, professional and enthusiastic work that went into the sale. ”

“ Your patience and liaising went a long way to bringing everything to the right conclusion. You gave it the personal touch which goes a long way. ”

“ The professionalism and 'go the extra mile' attitude, which you do not seem to get from the big corporate agents, will be the reason we shall be returning in future. ”

“ Your experience and calm and collected manner really showed through. ”

“ We were grateful for your sound advice, help, willingness to be flexible and of course for quickly finding us a buyer. ”

“ Your diligence, patience and constant shepherding of the multiple parties involved has seen the matter through to its positive conclusion. ”

“ From start to finish you kept us informed on everything, making the whole experience stress-free. ”

“ I recommend their services as you are treated more as an individual human being and not a number. ”

“ Dealing with Simon was a comfort during what was a daunting process. ”

PLEASE CALL FOR YOUR FREE VALUATION
 01284 769691 • 01449 737706 • 07803 138123
 or visit www.coakleyandtheaker.co.uk

*If you have instructed another agent on a sole agency basis, then the terms of those instructions should be considered to avoid a possible liability to pay two fees.



NOW IN ELMSWELL
CALL 01359 256821
 Reduced fee for Elmswell Sellers*
*T's & C's and minimum fees apply



WESLEY Coffee Shop...
where you are warm and welcome

Weekdays 9.00 – 4.00, Saturdays 9.30 – 4.00



ELMSWELL FOOTPATH WALK - Sunday 19th May 2024

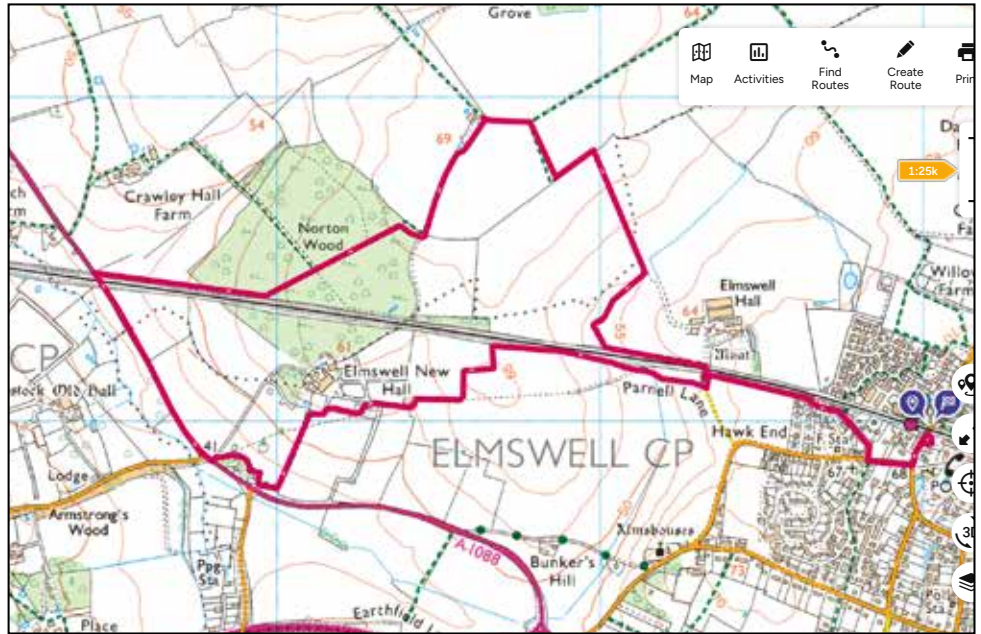
On yet another fine and warm day a party of six Elmswell parishioners congregated in prospect of a social bumble on the village footpaths. The air was electric with anticipation.

At the given time we headed off along School Road, turning into Hawk End Lane and hence on to FP13 running parallel to the railway.

Crossing Parnell Lane we continued parallel to the railway but now on FP14.

The footpath turned left away from the railway and headed south and west alongside field boundaries and through horse meadows which are now being used for sheep in the busy lambing season.

FP14 continued behind what was the Fox and Goose pub and then on to the A1088 at the entrance to Elmswell Park Stud.



With a high viz jacket to the fore the group utilised the verge of the A1088 to traverse the carriageway northwards, passing under the railway bridge and turning right on to FP23.

We were now heading east up the slope and the shade of Norton Woods.

On entering the woods the dappled light highlighted the early summer shades of the trees and undergrowth as can be seen in the photograph. It was indeed a lovely image.

FP23 continued to rise up through the woods, past the junction with FP25, on to open fields and hence arriving at the barn at the junction with FP7.

Turning right here and right again at the junction with FP35 we headed south east, across the footbridge and onwards towards Elmswell Hall. It hasn't been overly long since this stretch had been a mire and not passable for sensible walkers.

FP7 morphed into FP13, around Elmswell Hall we went and from here retraced our steps back on to Hawk End Lane, School Road finally arriving unscathed back at Crown Mill

An eminently pleasurable walk of approximately 4.68 miles in 1 hour 55 minutes (an average speed of 2.4 miles per hour)

Peter Hancock, EPC Footpath Officer

JUNE'S FOOTPATH WALK WILL BE ON SUNDAY 16th JUNE



The last of the very successful Winter Warmer events took place at Wesley on 16th May when 62 finger-food fans enjoyed fish & chips straight from the paper together with a drink, a roll a picture quiz, Bingo and good company.

The superb fish supper was delivered piping hot by Alperen and his staff from over the road. Other chippies are available, but as this is by far the best in the area, it's a no-brainer.

The Winter Warmer events have been subsidised by Babergh & Mid Suffolk District Council who are keen to help communities meet in convivial circumstances – and it has worked.

Wesley is already very popular and reaches all sorts of people, but there were many more new faces at this event, as has been the case throughout.

PARK GARAGE SERVICES

Units 1-2, Station Rd Industrial Estate, Station Rd, Elmswell, Bury St. Edmunds, Suffolk IP30 9HD.

ALL TYPES OF SERVICING - WELDING - MOT WORK - CLUTCHES - EXHAUSTS - SHOCKS
AIR CONDITIONING - TYRES - COMPUTER DIAGNOSTICS - BATTERIES - CAMBELTS - BRAKES

Your **LOCAL GARAGE** with over 20 years experience servicing and repairing all makes and models.

TEL: 01359 242479 OR VISIT: WWW.PARKGARAGESERVICES.CO.UK

CLUBS & SOCIETIES

HISTORY GROUP



At the end of April, some members visited **Woodbridge** for a guided tour of the Sutton Hoo Ship's Company's reconstruction of the famous 7th century Anglo-Saxon ship, the imprint of which was uncovered in 1939 just across the river in Mrs Pretty's Sutton Hoo garden. We learnt that although many of the artefacts and objects uncovered then have been repaired and restored (now in the British Museum), the largest artefact of all, the ship itself, has never been reconstructed. So, using skilled local craftsmen and ship-builders (many are volunteers), a full-size replica is being constructed on Woodbridge quayside, using traditional methods and tools to achieve this. Well worth a visit (free entry) to see all this in action, with the added bonus of viewing a series of very large, colourful and impressive tapestries sewn by local people, depicting the whole story. More details on www.saxonship.org, or visit *The Longshed, Tide Mill Way, Woodbridge IP12 1FP* – easily accessible within an hour by road (plenty of parking nearby) or train from Elmswell.

The Old Tea Room Veterinary Surgery

For a professional caring service

Tel: 01359 241 761

Station Road, Elmswell,
Bury St Edmunds IP30 9HA

www.elmswellvets.co.uk

HAYWARDS

SOLICITORS

FOR ALL YOUR FAMILY LEGAL NEEDS

We offer Fixed Fees at Competitive Rates

Telephone: (01449) 613631

email: enquiries@haywards-solicitors.co.uk

www.haywards-solicitors.co.uk

Free Car Park Available For Use By Clients.

7 - 9 TAVERN STREET, STOWMARKET, SUFFOLK IP14 1PJ

The Sutton Hoo Ship

The earliest English ship, buried in the 7th Century, rebuilt in the 21st

The Sutton Hoo SHIP'S COMPANY

www.saxonship.org



Our **May meeting** featured Richard Mann's talk, "Edith Cavell, East Anglia's WW1 Heroine". A devout Christian nurse and teacher, Norfolk-born vicar's daughter Edith (1865-1915) was a highly-educated and French-speaking experienced Matron of a revolutionary medical clinic in Brussels when the Germans occupied the city in 1914. Under the auspices of the Red Cross, the clinic and nurse-training school which she set up were both highly regarded and respected. Although the nurses were treating **all** nationalities in need of medical attention, the German authorities were convinced that this establishment was helping people to escape German-occupied Belgium. After a somewhat perfunctory trial with no English representation and being held in solitary confinement, Edith was made to sign a "confession" and summarily shot by firing squad the following day. There was a huge international outcry and condemnation about this, resulting in Edith's body eventually being exhumed from her original grave in Belgium, to be ceremonially transported back to England, where she was buried in Norwich Cathedral's graveyard with suitable memorial stone. Perhaps understandably, recruitment to the war effort increased substantially in the following years, and, subsequently, there have been many other memorial statues erected of this courageous woman, as well as a New Zealand bridge and Canadian mountain named after her (to name but two such tributes).



Our **Guided Tour Outing to Ely's Fenland Museum** will be on Saturday **13th July**, for which tickets will be on sale at our meeting on 13th June (or up to 30th June from 01359-242601) - £5.50 for members or £6.50 for non-members. Fuller details were in May's newsletter.

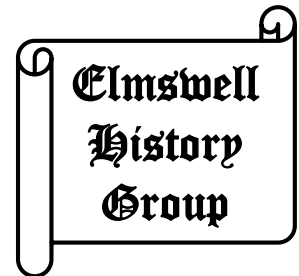
Our next meeting on **13th June** at **The Wesley** will start with our **AGM at 7pm**, at which we will be seeking to recruit more helpers to run our History Group from September. So, if you do not wish to see our group close, please do consider seriously if **YOU** could help us in any capacity to keep us going into our 25th year; all offers would be *very much appreciated*. Immediately following our AGM that evening, at 7.30pm will be Sarah Doig's talk "The Real Basil Brown, Rickingham to Sutton Hoo and Back", which ties in nicely with our April visit to Woodbridge. Travelling everywhere on his trusty bicycle, Suffolk's amateur archaeologist Basil Brown is famously known



for his uncovering of the Anglo-Saxon ship in 1939 (recently portrayed by Ralph Fiennes in "The Dig"), but there was more to Basil's life than that, so do join us then to learn all there is to know from this well-regarded local speaker. Everyone welcome.



Your History Group Needs You!



For further information about our History Group, please visit our website – www.elmswell-history.org.uk or contact our Secretary, on 01359-242601



PAUL SCASE

Home Improvements



Painting

- Using the best named paints to give you a professional finish
- Colour charts provided to give you the best choice of colours

Carpentry

- Wardrobes made to your design
- Floor to ceiling, wall to wall

• General Carpentry & DIY

Excellent Rates

Mobile: 07745 250440



MAY 2024 SID REPORT *Monitoring undertaken 10th May 2024*

Ashfield Road

Data collected 25th October 2021 to 10th May 2024.

This location less likely to be affected by A14 works.

Total vehicles in monitoring period 956,249

Average speed 29.72

AADT (annual average daily traffic) approx. 1030, an increase of 33 in 7 weeks

Approx. 53% of drivers over limit, same as last report

Average excess speed 36.24 mph

Maximum speed 100mph 2nd April 2023 22:25

Church Hill

Data collected 23rd February 2022 to 10th May 2024

Total vehicles in monitoring period 2,691,134

Average speed 28.46

AADT (annual average daily traffic) approx. 3333, an increase of 47 in 7 weeks.

Approx. 33% of drivers over limit, same as last report

Average excess speed 34.3

Maximum speed 70 mph 24th April 2022 16:05

Wetherden Road

Data collected 1st March 2022 to 10th May 2024

Total vehicles in monitoring period 2,097,353

Average speed 27.0

AADT (annual average daily traffic) approx. 2578, an increase of 40 in 7 weeks.

Approx. 30% of drivers over limit, 1% down from last report

Average excess speed 33.8 mph

Maximum speed 90 mph 19th November 2022 22:05

We are still seeing a slight increase in the AADT for Wetherden Road and Church Hill due to the continued rat-running as a result of the A14 works. The new 20 mph limits on Church Road, Cross Street and Wetherden Road have not had the effect of discouraging drivers from diverting off the A14. They have only increased the delay times at junctions. It is likely that we will see increases in the Ashfield Road AADT once this route is affected by the works to the A1088 Bridge.

WELDLINGEXHAUSTS



M.K. Auto's

MOT Centre LTD



MOT CLASSES 4 & 7



- CLUTCHES
- BATTERIES
- CAMBELTS/TIMING CHAIN

- SERVICING
- TRACKING
- WHEEL BALANCING

Mkautosmotcentreltd@gmail.com



MOT: 01359 241158/244421

REPAIRS: 01359 245998



The Workshop
Grove Lane
Elmswell
IP30 9HN

Please note as of February
2023 D A Bevan has been
taken over by MK Autos



Find us on
Facebook.



EVER ONWARD...

Our Parish Council, having officially agreed to assume hands-on responsibility for bringing our community pub into being, has asked all of the Community Benefit Society Management Board members to continue to serve as a, 'Task & Finish', working party to advise on the formation of a new advisory group - working title Elmswell Tavern Management Association- to take the scheme forward. The Board has agreed and the project therefore retains the rich depth of experience these individuals bring including in the building and engineering trades, with legal, accountancy and project management backgrounds as well as wide and current licensed-trade and facilities administration backgrounds.

MONEY MATTERS...

The share money invested by some 200+ individuals sits safely in the bank whilst Elmswell Community Enterprise is going through the formal process of dissolving itself. More than 3/4 of the membership having signed their agreement to the winding-up there are just a few other hurdles to be jumped.

Meanwhile, top of the Working Party agenda is advising on a share repayment framework that encourages shareholders to leave some or all of their money in the scheme. Suggestions include the possibility of a Loyalty Discount card and inclusion on a 'Donor Wall' at the pub entrance.

With £500,000.00 already secured there is a firm base on which to add any such donations.

The application for £240,000.00 of 'Levelling Up' funding from the Government is well advanced but has ground to a halt because of the General Election as part of the 'purdah' ensuring no political advantage is gained.

SPADES IN THE GROUND...

Following the very successful pattern that brought Wesley into being on time and on budget, advertising has begun for Expressions of Interest from suitably qualified and experience local building contractors. After the closing date of 21st June, Tenders will be invited from the selected companies by mid July for return in August and an Order Contract placed by the beginning of September for an October start date.

GLASS HALF FULL...

At last, we may have a realistic, informed suggestion as to when the work begins.

GLASS HALF EMPTY...

What a ridiculous time to start building...beginning of winter...pubs closing hand-over-fist, ground waterlogged, weather warnings & snowdrifts plus, what about another pandemic, world war etc?



CHEERS...

Before the builders are in, volunteers will soon be sought for stripping out carpet, furnishing etc.. Towards opening day. When the glasses will start full.



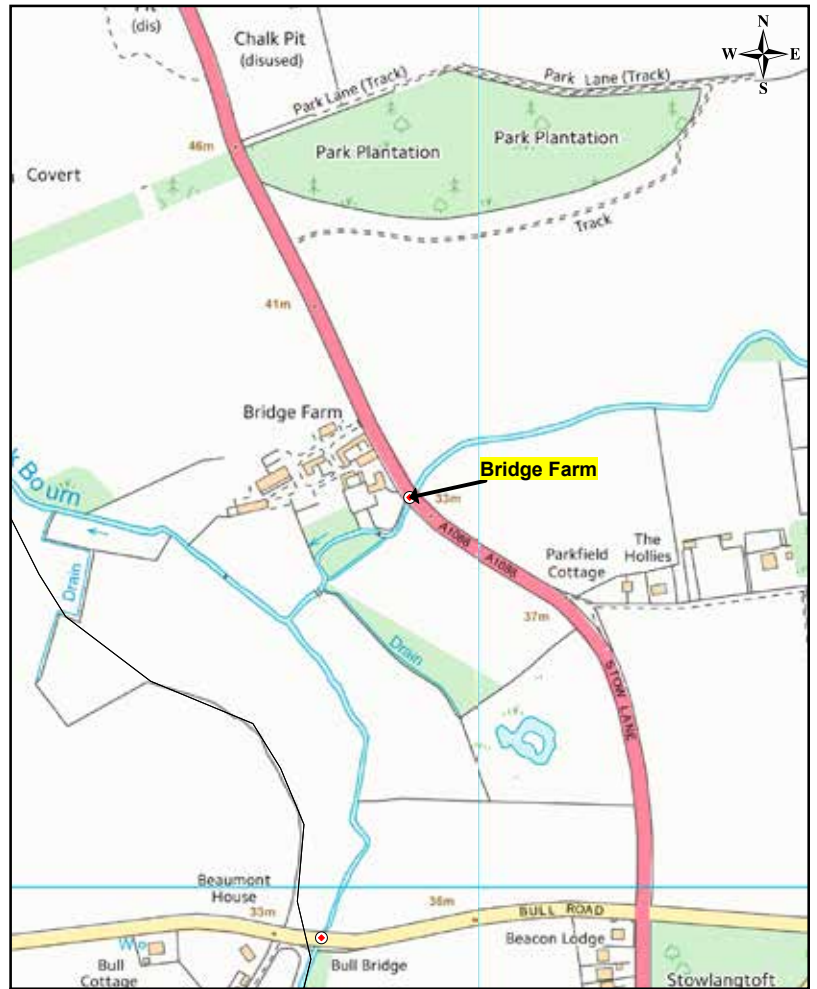


A1088 CLOSURE

Suffolk County Council (SCC) carried out a scheduled structural assessment of Bridge Farm Bridge on the A1088 north of Stowlangtoft. The assessment indicated that the bridge was still unable to carry full highway loading safely and concluded that the 7.5t Weight Restriction needed to continue to protect the structure and ensure the safety of highway users, pending reconstruction of the bridge. A 7.5t weight restriction was put in place with limited exemptions for specified hauliers.

The bridge is to be rebuilt but the works, which will close A1088 for an estimated 20 weeks, have been held back until the A14 concrete replacement work is complete on 21st June. National Highways works A14 J43 to J47 eastbound resurfacing & road markings would complete as far as possible before A1088 contract and would then go on hold until A1088 complete. This has been tentatively agreed between SCC & NH. The earliest actual start date is 8th July depending on UK Power Networks ability to divert electric cables.

SCC have budgeted for proactive and reactive interventions for potholes etc. on roads affected by A1088 closure. NH contractors will be requested to remove their TM signing to avoid sign overload. County Council Ward Member Andy Mellen has spearheaded efforts to have sensible measures in place over the inevitably stressful period of these various and overlapping works and EPC Members Fred Pallett and David Brown have made Elmswell's case at liaison meetings.



(2127) BRIDGE FARM (Bridge) (/34/10/)
 Stow Lane, Ixworth, West Suffolk, IP31 3JT
 Grid Ref: 594928,268414 Coordinates: Latitude 52.279314 Longitude 0.856062



Phoenix House, 3 Goddard Road, IPSWICH, Suffolk, IP1 5NP.

Scale 1:5000

© Crown Copyright. All rights reserved.
 Suffolk County Council Licence No. 100023395 2018

PRODUCED BY: ES

CHECKED BY: SHLD

DRAWING No.: Sketch 02

DATE: 09/04/2020

Office space to rent in Woolpit Village Square

Call Mac for more details:

077758 58562





CITIZENS ADVICE

We've booked a package holiday to Spain. It's our first time booking this sort of getaway, and a friend recently had a terrible experience when things went wrong on a similar trip. What sort of help is available if something does go wrong?

Hopefully you'll have a lovely time but if something does go wrong with your package holiday, Citizens Advice has lots of information about what to do and what compensation you may be eligible for.

Examples of things going wrong include:

- If the holiday you went on turned out to be lower in value than the one you originally booked.
- The hotel was a bus ride away from the beach rather than across the road as advertised.
- Big parts of the trip you booked didn't happen or services weren't provided, for example a planned two-day excursion was cancelled, and no alternative was organised.

It's worth noting that you can't get compensation if you simply didn't enjoy the holiday or if the problem was out of the holiday company's control - like bad weather.

If something does go wrong, firstly, tell the company or travel agent you booked with as soon as possible. Don't wait until you get home. And check the information you received when you made the booking to see what you're supposed to get.

Citizens Advice are currently seeking volunteers to join them at their Stowmarket office. If you are interested, please call us on 01449 676060.

If you would like to become a volunteer with Citizens Advice, please visit our website for more details <https://midsuffolcab.org.uk/volunteer/>

Citizens Advice Mid Suffolk can provide in depth advice on this issue and much more, including debt, finances, employment, benefits and family/relationships. You can contact them by phone on 01449 676060, visit in person at Milton House, 5 Milton Road South, Stowmarket IP14 1EZ or use the contact form at midsuffolcab.org.uk/contact-us. Opening hours are Monday-Thursday 9.30am – 3.30pm and Friday 9.30am – 12.30pm.

**citizens
advice**

Mid Suffolk

Langleys Conservatories & Windows

Your local family run business established in 1987



Telephone 01284 760345

Visit: www.langleysconservatories.co.uk Email: enquiries@langleysconservatories.co.uk

The best in energy efficient doors and windows!

Improve the insulation values and beauty of your home with the company you can rely on.

Feeling the chill this winter? heating bills getting more and more alarming? Then maybe its time to invest in new energy efficient double or triple glazing from the local company trading since 1986 in Bury St Edmunds. We don't do gimmicks or engineered discounts, we just offer great value for money with a first class service, premium products and guarantees to back it all up. Give us a call to arrange a free quotation on 01284 760345. Don't forget to check out www.Langleysconservatories.co.uk to see all of the home improvement services we offer.



Call today on 01284 760345 or email enquiries@langleysconservatories.co.uk





ELMSWELL LIBRARY

Hello Elmswell,

We are starting a new Wordplay session at Elmswell Library. For the first Tuesday of the month we are doing it at 9.10am at the library. Come along with preschool children to listen to stories or sing nursery rhymes. To ensure that children can enjoy the session we hold the Wordplay sessions when the library is closed for customers not coming to the wordplay session. On the other Tuesdays during the month Wordplay sessions will stay at 1.10pm.

We are starting to get ready for Reading Quest, our summer reading programme for children. From 13 July children can visit any library in Suffolk to sign up for Reading Quest. This year is a bit different as it is about children exploring different experiences to be had while reading e.g. make something from a recipe book, read while travelling or reading with a family member.

Can you help by volunteering for Reading Quest? We are looking for volunteers to do an hour each week to listen to children tell you about what they have done and about the books they have read.

This month's exhibition is acrylic pours by Patsy Cane. Patsy is a fluid based artist from Stowmarket, using acrylics

on canvas but also on wood, glass and ceramics. The exhibition will be up until 2nd July.

Our book display theme is Here Comes the Sun with books with sun in the title or in the author's name. The display includes The sun walks down by Fiona McFarlane, Ajay and the Mumbai sun by Varsha Shah, Retreat to the Spanish sun by Jo Thomas, Klara and the sun by Kazuo Ishiguro, Ashes of the sun by Jango Wexler, If I have to be haunted by Miranda Sun and more.

We are able to offer the range of books, activities, newspapers, computer access, in part to donations to Suffolk Libraries. If you are able to, please consider donating to Suffolk Libraries. You can donate via <https://www.suffolklibraries.co.uk/support-us>

See you in the library soon,

Miles

What's on at Library?

Story Time

1.10pm – 1.30pm every Tuesday (except 1st one of the month)

9.10am – 9.30am every 1st Tuesday

Sunday Crafts

1pm – 2pm every Sunday (origami 9th and 23rd June)

Lego Club

Every Sunday 11am – 12noon

The Keep in Touch Community Café

10.30am on Wednesday 19th June at the Wesley Café (every 3rd Wednesday)

Opening times

Monday:	Closed
Tuesday:	10am – 1pm and 2pm – 7pm
Wednesday:	2pm – 5pm
Thursday:	10am – 1pm and 2pm – 7pm
Friday:	2pm – 5pm
Saturday:	10am – 1pm
Sunday:	10am – 3pm



www.clearfinancialservices.co.uk

Worried about Savings?

Let our team of financial advisers help you to get the most from your savings and investments.

Confused about your pension?

We would be happy to discuss the options available for your retirement planning.

Want to protect your family or income or mortgage and loan?

We are here to advise on the right solutions for your budget.

Mortgages?

For a competitive mortgage, we have advisers to assist with that purchase or remortgage.

Equity Release

We have advisers able to assist you with this area of advice.

Equity Release will reduce the value of your estate and can affect your eligibility for means tested benefits.

We make it



The Old Police House,
Cooks Road, Elmswell,
Bury St Edmunds,
Suffolk IP30 9DB.

Tel: 0345 271 3245



Approver Quilter Financial Services Limited & Quilter Mortgage Planning Limited. 12/06/2023



All types of driveways

All types of patio's including porcelain

Shed bases

Concrete Foundations

Mini Digger Hire

Mobile: 07990 502354

Tel: 01359 250496

Find us on Facebook

GKW Groundworks

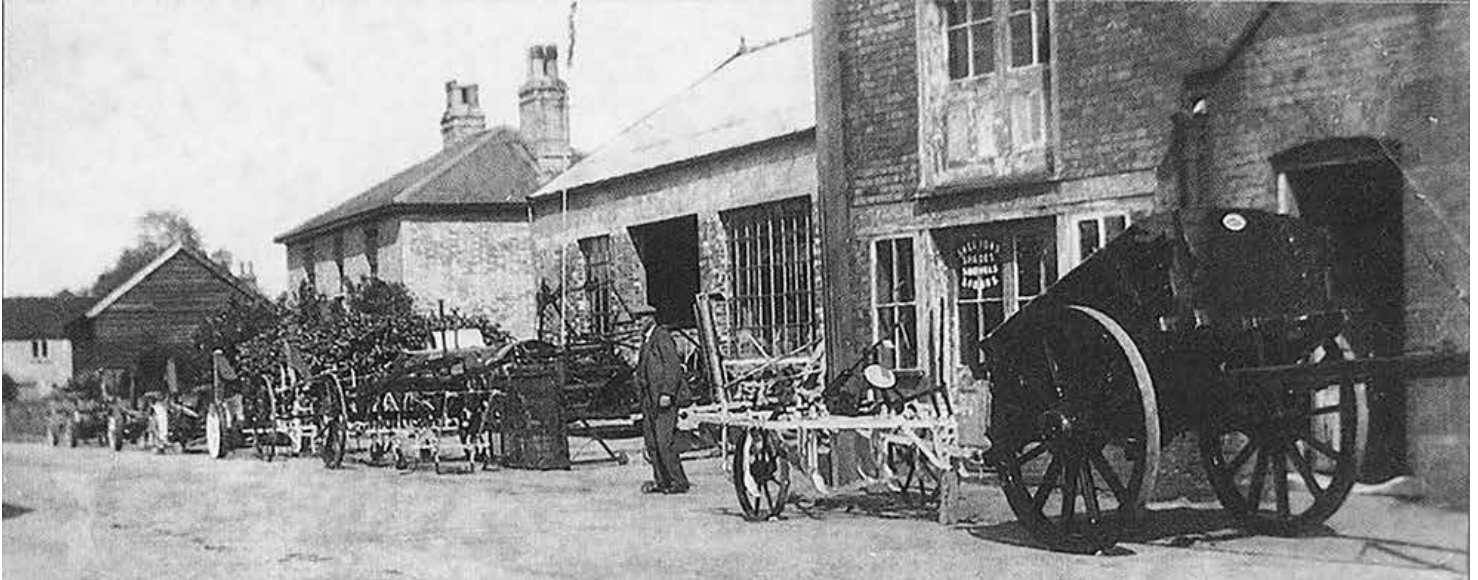


BWMA

The BWMA has, for many years, advised the Parish Council on the management of the village's community facilities. It comprises 24 members drawn from user groups, parish councillors and some residents elected at the AGM.

At a meeting held at Wesley on 7th May, the following matters of interest were among those considered.

- Five of the Victorian village views wall decorations have been captioned and are now with Eastern Frames for mounting ready for display in the coffee shop. One such, seen here, details some of the background to Thurlow Nunn's place in village history.



Blacksmith's Way, off Ashfield Road, recalls the blacksmith's shop which is seen here in the foreground, behind the cart. This enterprise was bought from the Smythe Estate by Nathan Warren in 1876 and grew to employing, '7 men and a boy', to become the 'Blackborne Ironworks' by 1885. The business was bought by Frank Nunn, an engineer from Drinkstone in 1909. He expanded it and built Blackbourne House, the white-brick building with the chimneys seen here in the 1930's. He later expanded the site to provide a showroom and offices. In 1946 the original blacksmith's shop with its 4 forges was demolished to provide more storage and in 1970 the business merged with George Thurlow & Sons of Stowmarket to create Thurlow Nunn. Additional building followed to house the headquarters of what is now the Thurlow Nunn Standen group of companies operating from some 20 sites across East Anglia with its headquarters in Ely. The Parish Council fought unsuccessfully to have the core building, Blackbourne House, retained and the 66 houses at Blacksmith's Way were built in 2004.
[The various spellings of 'Blackbourne' are as documented]

- The additional solar panels and battery storage at Blackbourne will be actioned in September when the grant will be confirmed.
- The access from the new Ashfield Road estate is in the hands of the developers themselves who are in discussion with the Planners.
- Turners' Field needs to be drained and discussions have been opened with a local contractor towards assessing the scale of the job.
- Painting the original fair-faced blockwork in the Blackbourne will cease during the summer when outdoor work will take precedence.
- The Chips in the Chapel 'winter warmer' event was a sell-out with 62 patrons taking part. The whole Winter Warmer programme has been a tremendous success, benefitting from MSDC grant aid. Future suggestions include an Afternoon tea and Strawberries for Wimbledon. Further suggestions would be welcome but thought should be given to the possibility that MSDC might not renew their subsidy scheme.
- The Crown Mill play area is past its best and will probably need to be completely renewed. The surface will soon deteriorate to the point of posing a hazard. The recent Mid Suffolk community consultation confirmed public support for refurbishment of play areas. Three companies have been asked to submit plans for renewal and these will be assessed by EPC for further public consultation.
- The new ride-on mower is saving Caretaker time and helping produce a neater and tidier impression at Blackbourne.
- There is a suggestion that the Wesley meeting room could be extended into the rear car park with a glazed extension which would allow for 20 more covers in the coffee shop and significantly change the ambience to a brighter outlook, sacrificing 4 car parking spaces.
- New PIR lights have been fitted along the rear wall to illuminate the car park and a wide-angled CCTV camera has been installed covering the whole of the new area.
- A section of the rear wall has been found to be unstable once it was exposed by the car park works. It appears to have been built on top of an old well. Options under consideration include the insertion of high-tensile steel rods and the rebuilding of the relevant section incorporating an arch which would, effectively, bridge the well and serve to connect with the Tavern garden.
- The Chairman outlined the way forward whereby the Tavern project, soon to be entirely under Parish Council control, would need a structure not unlike BWMA – possibly the Elmswell Tavern Management Association (ETMA). The new committee would need some specialist knowledge and experience of the pub trade similar to that of the E.C.E.



ST JOHN'S CHURCH

Greetings from St John's Church

May was another busy month at St John's Church. One particular highlight was a trip to Lavenham on Thursday 9 May to celebrate the Ascension of Jesus. The day kicked off with the early birds taking a trip up the magnificent church tower for a short act of worship, before coming down to enjoy breakfast! Then at 10am, there was a deanery service to mark how the Lord Jesus was taken up into heaven to join his Father on his eternal throne. Jesus is still alive today in heaven and will one day return in the same way (see Acts chapter 1 in the Bible). I was particularly taken by the craftwork by a local artist that was on display (see picture).

Another special occasion in May was Mission Sunday, when Alex and Vatha Theobald visited to share their plans for heading off to East Asia as missionaries with OMF during the service and over lunch at the church. Pentecost (the coming of the Spirit of God on his Church) was celebrated on Sunday 19 May in the afternoon with a very uplifting *Songs of Praise* event preceded by afternoon tea.

June starts with our monthly family service. This month we will be looking at the rather odd (but very strong) character called Samson, who God used to save his people in the Old Testament. During the rest of the month, we shall be looking at Paul's letter to the Philippian Church in the morning services and the children will be looking at the birth and childhood of the prophet Samuel in Sunday School.

All are welcome at St John's. We are a very friendly congregation and you can be sure of a warm reception. We meet at 10:30am each Sunday to worship the Lord Jesus and learn what it means to follow him. Our group for children meets during the service (except when it is all age) and includes a story from the Bible and a craft. Tea and coffee (and something naughty but nice) are

available afterwards.

Upcoming Dates:

Sun 2 June 9:00am

Holy Communion

Sun 2 June 10:30am

Family Service

Sun 9 June 10:30am

Sunday Worship with Holy Communion

Sun 16 June 10:30am

Sunday Worship

Sun 23 June 10:30am

Sunday Worship with Holy Communion

Sun 30 June 10:30am

Sunday Worship

Every Saturday:

9:00am Weekly prayer meeting online (see web site for details)

We live stream most of the 10:30am services on our Facebook page (also available on our main web site later that day).

Rector: Peter Goodridge,
elmswellrector@gmail.com
(01359 240512)

Web site: www.stjohnselmswell.org.uk

Facebook:

www.facebook.com/stjohnselmswell

YouTube:

www.youtube.com/@stjohnselmswell



ST. JOHN'S CHURCH

TOWER

FLOODLIGHTING

Everyone is welcome to sponsor the floodlighting of St. John's, a lovely way to commemorate a personal event, an anniversary, or any other special occasion. Alternatively, you can simply make a donation. And it all helps to pay the day-to-day running expenses of our parish church.

A night's floodlighting costs £5.

Cheques payable please to "ST. JOHN'S CHURCH, ELMSWELL".

For the summer months the lights will be on between 8.00 p.m. and midnight.

Please note the deadline for inclusion in the July Newsletter is Monday 24th June.

Your support is very much appreciated.

Thank You.

MAY 2024 SPONSORSHIP NOT PREVIOUSLY ACKNOWLEDGED

11 in memory of Annie Thompson on her Birthday. "We all love and miss you so much". xxx.

JUNE 2024 SPONSORSHIPS

1 remembering Amy Pleasance, a dear Mum, Grandma and Great Grandma, on her Birthday.

8 Lesley Manning. Remembered with love on her Birthday. Love Colin. XX.

9 to remember and thank all those past Elmswell Fire-Fighters who served their village and community so well.

28 remembering our dear Mum, Zena Booth, who passed away on 28th June 2017.

All bookings / payments please to :-

Trevor Sadler, Abbots Warren, Church Road, Elmswell (Tel: 240908)



CATHOLIC

PARISH

OF OUR LADY,

STOWMARKET

Parish Priest:

Rev. Simon Leworthy,
The Presbytery, 29 Lockington Road,
Stowmarket, IP14 1BQ
Tel:01449-612946
E-mail: pp@ourladystowmarket.org.uk

MASS TIMES:

Saturday (First Mass of Sunday) – 6pm
St Mary's C of E Church, Woolpit IP30 9QG

Sundays – 8.30am & 10.15am

Our Lady's, Stricklands Road,
Stowmarket IP14 1AW

Holy Days – 10am & 7.30pm

Our Lady's Strickland Road Stowmarket

Weekday Mass is usually 10am, see the weekly Newsletter or the Parish Website – www.ourladystowmarket.org.uk

All are welcome to "Coffee and Chat", 2 – 4pm on the 2nd and 4th Thursday of the month. This is held in the Parish Hall above the Church – a lift is available.



ELMSWELL BAPTIST CHURCH

Our sister, Dorothy Hails sadly lost her battle with cancer on May 17th but we can rejoice that she is now with her Saviour and Lord. Our thoughts, prayers and practical support are now concentrated on Roger and the family. Her thanksgiving service is at the chapel on Tuesday June 4th at 3pm.

A general election has just been called as I write this. For many I suspect this will be a time of dread of the blanket coverage of promises being made on our television screens. We know that politicians of all parties have difficulty keeping their promises. Our God however always keeps his promises, even if not always to the timetable that we would like. Our prayers should be that those elected will be people whose only reason for standing is to be of service to those they represent and to have the interests of the whole country at the centre of everything they do.

This summer is going to be a packed time of sporting activity isn't it? Euros for men and qualifiers for the women in football and the Olympic games in Paris. Careers for sporting people tend to be quite short but some seem to be able to extend

their playing time for longer than others. Undoubtedly a major factor in this is how well they look after themselves. They train consistently, eat healthily, drink modest amounts of alcohol and certainly don't take illegal drugs. The Christian life has been likened to a sports persons, the writer of Hebrews in the New Testament encouraged us to keep our eyes on the prize and press on to the end of the race of life. The prize a Christian is aiming for is eternal life with Jesus Christ, the alternative in Jesus' own words is terrible beyond imagination. To achieve this, having accepted Jesus as Lord and Saviour, we need to be regularly studying God's word and speaking with him in prayer. We need to follow a fitness program in the same way sports people do. It's not that our actions save us, we are saved by the free grace of God, but we can only live a life worthy of God's grace if we follow his teachings.

We've had the Elmswell Foodbank using our premises in April and May. This has worked well and will continue at least until the Foodbank are able to return to the Bowls Club once the bowls season has finished.

The Ladies Friendship Group finish their meetings for the summer with a visit from Andy Abbott talking about Photo Journalism on June 3rd at 2pm. Meetings will resume on September 2nd.

All ladies are welcome. Phone Margaret on 241541 for more information.

Food & Friends continues on Thursday June 13th at midday – for the older folk – a chance to meet other people and enjoy a nutritious meal for a modest donation. We have just received a 5 star hygiene rating from Mid-Suffolk Environmental Health. Jackie has had to jump through a few hoops to get there. All are welcome. Phone

Jackie on 245918 to book your place.

We are grateful to all those who are booked to come to lead our worship in the coming weeks. They are listed below:-

June 2 nd	Rev. Reg Craig (inc Communion)
June 9 th	Mark Partridge – All-Age Service
June 16 th	Rev. Norman Tharby
June 23 rd	Stephen Horrex
June 30 th	Rev. Norman Tharby
July 7 th	Rev. Robert Green (inc Communion)

A warm welcome is extended to all who wish to attend any of the above events.

Visit our website at www.elmswellbaptist.org.uk, email cockant2@btinternet.com or telephone any of the numbers in this text for further info.

May you know God's blessings this summer.

Tony



IXWORTH ANGLING CLUB

The Ixworth Angling Club is a small friendly fishing club that was formed in 1977, that has access to two private sections of the river Blackbourn. This is situated in the village and is only open to residents of Ixworth and surrounding villages to join by the wishes of the local landowners. The club offers members peaceful fishing, in natural surroundings that are a haven for wildlife. The river contains Roach, Rudd, Perch, Dace, Chub and Pike.

The new season starts on Sunday 16th June 2024 with membership now available from Owen Holder 01359 408073 joining fee for 2024/2025 is £15 adults (16 years and over) £10 for juniors (12 to 16) and senior citizens. Members under 12 years are free.

The club will be running a number of fishing matches this season with trophies to be won as well as the always popular annual Christmas charity match and raffle.

For more information about the club please visit ixworthangling.onesuffolk.net or see Facebook "Ixworth Angling Club"

Computer Help

PC, Mac, Server or Tablet support in your office or home.
A rapid response from a qualified IT professional.

- laptop and desktop repairs, speed up your system
- cyber security, cloud systems, network setup
- data recovery and virus removal
- improve wifi, smart TV, phone, tablet etc
- individual tuition

Gage Computer Services (01359) 245273
www.comphelp.co.uk steve@comphelp.co.uk



Est. 2003





Find us on **Facebook**
Follow us on **Instagram**

YOUR LOCAL RELIABLE SERVICE PROVIDER FOR BOILER SERVICING & REPAIRS

Benefits to an annual boiler service

- Catch any issues early on ✓
- Validate manufacturer warranty ✓
- Be ready-for winter ✓
- Save money on repairs ✓
- Extend the lifespan of your boiler ✓
- Keep your household safe and warm ✓

h2oplumbers.co.uk

Opus House, Elm Farm Park, Thurston, Bury St. Edmunds, Suffolk IP31 3SH



TRAVEL STOP

BIG ENOUGH TO OFFER THE WORLD, SMALL ENOUGH TO CARE

CHRISTMAS MARKETS AND ANDRE RIEU FESTIVE EVENING

André Rieu is a musical phenomenon like no other, and together with his 60-piece Johann Strauss Orchestra, you could witness the 'King of Waltz' live!



Here, you can immerse yourself in a winter wonderland, with magnificent decorations, Christmas carols, and a stunning festive landscape. At this time of year, Maastricht is home to beautiful Christmas markets brimming with festive atmosphere, and you will also enjoy a trip to Valkenburg and its famous Christmas markets held in the caves.



13th December 2024 for 3 nights

From £699 per person.

Contact us for more information.

Tel: 01359 242555 email: elmswell@travel-stop.co.uk

The office is open for walk-ins and appointments on Thursdays and 9am to 5:30pm for phone and email enquiries Monday to Saturday.

ABBEYGATE WINDOWS

Our new business premises is now open!
Please call in for a chat about any of the following:
Windows, Doors, Conservatories, Garage Doors, Fascias, Soffits and Hardi-Planking.

Unit 3 Enterprise Park, Etna Road, Bury St Edmunds, IP33 1JZ

iwa.biz **Assure** Certified Installer

TEL. 01284 763244
abbeygatowindows@btinternet.com
www.abbeygatowindows.co.uk

THOMAS & YOUNG
WEALTH MANAGEMENT LTD

- Investment Planning
- Retirement Planning
- Estate Planning
- Business Protection
- Income Protection
- Long Term Care
- Life Assurance
- Inheritance Tax Planning

Find us at:
**Risby Business Park,
Newmarket Road,
Risby, Bury Saint Edmunds
IP28 6RD**

CHARTERED FINANCIAL PLANNERS

Call: **01284 334400**
www.tywm.co.uk

SJP Approved 29/04/2024

NEWS FROM ELMSWILD



Willow wonders

All the rain we've had recently has given our willow a boost – it's growing like crazy! There should be a good harvest next January in both our willow beds. In the meantime, we've been honing our weaving skills with local basket maker Jo Hammond. Everyone had a great time at our first course last month, making a forager's basket. This pretty oval basket is great for collecting flowers, herbs, mushrooms – or anything you like, really. Everyone worked very hard and went home with their own basket. This month Jo is back again with two weaving courses at Lukeswood – **Saturday June 15th, 9.30-12.30, making bulrushes** **Saturday June 15th, 1.30-4.30, making wall baskets** At the time of writing we still have a few places left, so if you haven't already booked and you would like to try out a new craft, do get in touch. All materials and tools will be provided and the cost is £25 per person.



Spoon carving/axe work

While we're on the topic of honing skills, we're very pleased to welcome a new course leader to Lukeswood later in the year. Local wood carver, Nick Gosman, is inviting us all to have a 'Spoonful Day' on Saturday 14th September. Nick will be teaching participants to carve spoons, with a particular emphasis on using the axe as well as knife work. This is a really useful skill as it produces quicker results, allowing the knife to be reserved for finer details. Of course, knowing how to wield an axe safely is crucial, so Nick's demonstration is a must for all would-be spoon carvers. We will be using birch wood from Lukeswood itself, and all materials and tools will be provided. Nick will guide us through all the processes involved in transforming a lump of wood into a sleek spoon. Cost is £45 per person. Because of the nature of the tools being used, this is one for adults only. If you would like to join in please contact us, so we can find out numbers in good time.



Orchid time

Keen gardeners will know that orchids played a starring role in this year's Chelsea Flower Show. There was an amazing display of rare orchids from around the world, including some from Great Britain. A star attraction from this country was the Lady's-slipper orchid, which is lovely to look at but now very rare in the wild. Now is the time of year to spot orchids and some of them are very close to home! There are over 45 species native to the UK. Many are highly specialised to specific habitats and also have special symbiotic relationships with particular pollinators and fungi living in the soil. They reproduce via tiny seeds like dust which require perfect conditions to germinate. This makes them vulnerable to climate change and habitat loss – the conditions they need have to be exactly right for them to thrive. Often quite large colonies will disappear only to pop up again in another place. We are lucky enough to have four different species of orchid growing at Lukeswood and Kiln Meadow – Common-spotted, Marsh, Bee, and Pyramidal. They are fantastic to spot in May and June – look out for colours ranging from pale pink to dark purple, and also for the spotted leaves that some of them have. Our photo shows a pretty Common-spotted orchid at Lukeswood, complete with a Thick-legged Flower Beetle in shiny green foraging for pollen!

Mary Feeney

info@elmswild.org.uk



P H Peckham

Plumbing & Heating Engineer

T. 01359 240958 M. 07802 642884
e. phpeckhamplumbing@gmail.com

- 24 HOUR CALL OUT
- FREE Estimates
- Corgi Registered Solid Fuel, Oil or Gas
- Bathroom Suites Designed and Installed
- Water Softeners Fitted
- Tiling
- Boilers Serviced



Wayne Salmon Electrical

For all your electrical requirements - Domestic, commercial and industrial.

All work carried out to a high standard.

Mobile 07843 302798



T.P. Services

UPV-c Window & Door Repairs

Sealed Units, Hinges, Locks, Handles, Letter Boxes

Over 30 years' experience, free quotations

Contact: Tom

Mob: 07957 098118

Email: tpservices65@gmail.com

BLOMFIELD MAINTENANCE

GAS ENGINEER
Natural and Propane (LPG)

Servicing and repairs of:
BOILERS & COOKERS

COMMERCIAL CATERING
EQUIPMENT

Installation of:
COOKERS and HOBS



LANDLORD GAS
SAFETY CHECKS

01359 241454

07889 616937



**F. G. BROWN
- OPTICIANS**

Denmark House,
41 Bury Street,
Stowmarket

Tel:- 01449 612812/674030

As independent opticians we offer a more personalised eyecare service that you can trust for all the family including:-

Optomap retinal examination

Colorimetry

A wide range of competitively priced frames and spectacle lenses

Contact lenses

Prescription and non-prescription sunglasses

Your sight care is our priority



**LOCAL TILE AND
BATHROOM SHOWROOM**

BEAUTIFUL BATHROOMS, STUNNING TILES EXPERTLY FITTED ALL AT GREAT PRICES!

OVER 20 YEARS EXPERIENCE IN THE TILE AND BATHROOM SECTOR WITH GREAT KNOWLEDGE, PROFESSIONALISM AND EXCELLENT CUSTOMER SERVICE

- SUPPLY ONLY AS WELL AS SUPPLY AND FIT
- WE ALSO SELL TILING MATERIALS SUCH AS ADHESIVE, GROUTS AND TRIMS!



CALL TODAY TO BOOK A FREE CONSULTATION OR SIMPLY POP INTO THE SHOWROOM WHERE WE WILL BE DELIGHTED TO HELP WITH YOUR REQUIREMENTS.

FOR APPOINTMENTS CALL CLARE ON 07583 964 593 OR EMAIL AT CMS.TILES@AOL.COM
WWW.CMSTILES.CO.UK

[WWW.FACEBOOK.COM/CMS.TILES.BATHROOMS](https://www.facebook.com/cms.tiles.bathrooms)

CMS TILES, UNIT 9D, CHARLES INDUSTRIAL ESTATE, STOWMARKET IP14 5AH

tcllandscapes.co.uk



The Country Life Landscapes 'Growing with you'

Supply

Decorative Stones
Soil Improver • Turf
Aggregates • Stones
Woodchips • Barks
Hardcores • Logs
Sands • Topsoils
Composts & More

BULK BAG

Garden Supplies
& Waste Collection
Tel: 01359 240094
Email: orders@tcllandscapes.co.uk

- Design
- Construction
- Maintenance

As well as a complete landscape and maintenance service, we offer garden supplies and waste collection



Collection
Green Waste
Wood • Soil
Turf • Weeds
Hardcore • Stone
Brick • Slabs
Concrete • Metal



TONY FISHER

**PLUMBING & PROPERTY
MAINTENANCE**

- 24hr Emergency Callout
- Bursts, leaks, blockages etc.
- Bathroom/shower installation
- Tanks/cylinders/radiators
- Tiling floors/walls
- Painting & Decorating
- General DIY jobs
- Garden Maintenance

Tel. 01359 242556

Mobile 07758327743

Reliable & Friendly Service!



Father's Day

16th June 2024

For a simple, inexpensive gift idea, why not try and recreate the idea below.

You will need:

- Paper
- Pens
- Stones
- Googly eyes
- Frame with glass removed



You could talk about why daddy is so special and record what your child says in a Father's Day card!

Healthy Eating Week

10th-14th June 2024

Organised by the British Nutrition Foundation, this week aims to connect people, food and science and provide impartial, evidence-based information to people so they can adopt healthy, sustainable diets - for life.

Activity idea: At home, discuss with your children the importance of a healthy diet and see if they can identify 'All the time foods' and 'Sometimes food'. Talk about the benefits of specific food, for example, red foods support our heart and memory, blue foods help our brain function. Look through magazines together and encourage your child to categorise the different foods.



Child Safety week

3rd-9th June 2024



Child Safety Week is the Child Accident Prevention Trust's annual community education campaign, acting as a catalyst for thousands of safety conversations and activities UK-wide.

Road Safety Observation Sheet

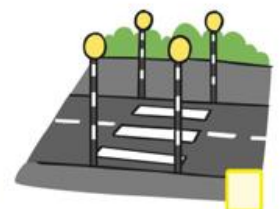
Tick the things you see as you walk around.



Lollipop person



Stop sign



Zebra crossing



Car



Lorry



Bus

ELMSWELL FOOTBALL CLUB



LMT Print You Name It, We Print It!
For all your printing needs contact:
E: liam@lmtprint.co.uk
T: 07896 900 968
W: www.lmtprint.co.uk

S.S. KITCHEN FIT & CARPENTRY
STEPHEN SHEPHERD
KITCHEN FITTER & CARPENTER
07802681240
sskitchenfitandcarpentry@hotmail.com

ELMSWELL KEBAB
07860 255 782
Station Road, Elmswell



FIRST REPORT

Our last game was due to be at home against Coplestonians... a big send off for our departing managers... but it was not to be. It was the same day as Ipswich's last league game and many games were cancelled as teams could not raise a side. Cops cancelled so we got the points. As you can see in the table above we finished 7th which is not at all bad.

Division Two						
POS	Team	P	W	D	L	PTS
1	Kepple Harbich F.C. (Sat)	22	17	3	2	54
2	Kilwin Blithell F.C. (Sat)	22	18	6	4	51
3	Worthington United F.C. (Sat)	22	14	2	6	44
4	Spaxhall Woodway F.C. (Sat)	22	14	2	6	44
5	Springfield F.C. (Sat)	22	12	7	3	43
6	Coplestonians F.C. (Sat)	22	11	1	9	40
7	Elmswell F.C. (Sat)	22	9	4	10	38
8	Small Heath Farm (Sat)	22	7	5	10	36
9	Claydon F.C. (Sat)	22	6	2	14	20
10	Ipswich Athletic F.C. (Sat)	22	5	1	16	16
11	Stanhope Athletic F.C. (Sat)	22	3	2	17	11
12	Northwell Sports F.C. (Sat)	22	0	3	19	0

All we have left now is our awards afternoon (last year's winners pictured, left) and to say our final farewell and thanks to our departing managers.

SECRETARY'S REPORT

Not so much to inform you of this month so I'll list all the interesting things we'll know next month. We'll have a run down of end of season award winners from both teams. Managers' Player, Players' Player, Golden Boot and a Club Young Player Award. We'll have more info on the new First Team Manager. Interviews have been held and the favourite candidate looks like a good fit with plenty of SIL experience. We hope to unveil him next month. Then we can kick on and get started with Preseason training. I've already booked several friendlies for both sides. And we'll also let you all know when training is in case any new faces want to come along and get involved. Enjoy the Euros. Up The Elm



The Elmswell Fish & Chip Shop
Great British
FISH & CHIPS
KEBABS COMING SOON!
01359 244672



RESERVES REPORT

Our last game was against top side Ipswich Vale Exiles who have a plus 116 goal difference and beat us 10-0 at their place on the first day of the season. You can see where this is going. We did slightly better this time though. Exiles started rampantly and we just couldn't contain them. Half time score was 8-0 but we actually won the second half 2-1. Goals from Malin and a first goal for Ben Hudson. Mendlesham pipped us to 7th place (league table of opposite page) being given the points when second place Somersham chose to watch Ipswich instead of beating them. Bit unfortunate really as we beat Mendlesham home and away this season.

Division Six						
POS	Team	P	W	D	L	PTS
1	Ipswich Vale Exiles F.C. First	18	16	1	1	49
2	Somersham F.C. Reserves (Sat)	17	12	3	2	39
3	Redgrave Rangers F.C. Reserves	18	10	4	4	34
4	Hedburgh United F.C. Betsforders	17	9	3	5	30
5	Westminster United F.C. Reserves	18	9	1	8	28
6	Saxmundham Sports F.C. Reserves	18	6	1	11	19
7	Mendlesham F.C. First (Sat)	18	5	2	11	17
8	Ipswich F.C. Reserves	18	5	1	12	16
9	Bramford United F.C. First	18	5	1	12	16
10	Kingsway Rebels F.C. W	18	3	1	14	10

*adjustment made

ADVERTISE ON THIS PAGE / SPONSORS

anyone interested in advertising on this page or sponsoring some new kit, balls, tracksuits etc

CLUB SUPPORT

Anyone interested in helping out with any admin roles or getting involved on match days, get in touch for more details. For all the above you can contact us on our socials or email club secretary at edddd101@gmail.com

CARPET CLEANING

BOOK NOW

UPHOLSTERY CLEANING

ELMSWELL FC RESERVES' SPONSOR

ServiceMASTER Clean

Upholstery
Carpets & Rugs
Amtico+Karndean

t.01359 241577 m.07398251908

PARK GARAGE SERVICES

your local garage

ALL MAKES & MODELS

SERVICE & REPAIRS

01359 242 479



0% LANDFILL

CULFORD WASTE LTD

Family Run Est. 1989

SKIP HIRE
2 to 12 yard skips for hire.
15-40 yard roll on roll off skips for hire.

BAG HIRE
An excellent alternative to hiring a skip when either space is restricted or a skip is simply just too big.

AGGREGATES
Recycling such materials after crushing and screening allows Culford Waste to provide a substantial range of aggregates. Aggregates can be delivered bagged or loose.

SCRAP METAL COLLECTION SERVICE AVAILABLE
Please call for details

GRAB LORRY
Our grab lorries are eight wheel based with payloads of 17 tonnes, and can grab all types of waste.

ARGICULTURAL
Where burning or burying waste is no longer an option for farmers, Culford Waste provides a disposal facility for farmers.

01284 728950
ORDERS@CULFORDWASTE.CO.UK

Office Hours:
Monday - Friday: 8am - 5pm
Saturday & Sunday: Closed

TBS HIRE

Available to Hire from a Modern Fleet:

- Diggers & Dumpers
- Access Equipment
- Portable Site Toilets
- Landscaping & Garden Machinery
- Concreting Equipment
- Power Tools



Plant & tool servicing and repair also undertaken.

Thurston Rd, Great Barton, Bury St Edmunds, Suffolk, IP31 2PJ

T: 01284 788122 E: info@tbs-hire.co.uk

www.tbs-hire.co.uk



FENCING, GARDENING & PATIOS

All fencing supplied and erected
All garden work...regular maintenance or one-off

- Grass cutting up to 3½ acres
- Garden Clearance
- Tree Felling • Stump Grinding
- Concrete bases laid • Sheds erected
- Turf Laying • Artificial Turf
- Driveways • Pressure Washing
- Garden machines serviced and repaired

No obligation quotes

Contact Andy

01449 403050 077487 85197

wade.andrew63@gmail.com

CLARKES

OF WALSHAM LIMITED

✓ TIMBER & BUILDING SUPPLIES ✓ GARDEN & FENCING ✓ COUNTRY STORES



SERVING TRADE AND PUBLIC SINCE 1908



www.clarkesofwalsham.co.uk | 01359 259 259

The Street, Walsham-le-Willows, Bury St Edmunds, Suffolk, IP31 3BA

**FREE
DELIVERY
FOR ORDERS OVER
£100**



WESLEY UKES

WESLEY UKULELE BAND

May has seen us return to three previous venues and perform at one new one. The repeat gigs were at Nowton Court Care Home, Time Out Dementia Hub and Cornwallis Court in Bury. Both Nowton and Cornwallis Courts are a joy to play at, as they are both imposing buildings with lots of room for us to play in. Time Out Club is a little different with only a small space, so we only take around six group members. However, we are well received at all of them and the audiences join in with singing and playing the drums, rattles and tambourines that we take along.

Our first time at Peddars Court in Ixworth was a little strange as we had expected to be playing for care home residents. As it turned out, we played to members of the public in the café next door. Very enjoyable and they presented £50 on our behalf to Help for Heros, their charity.

Our pictures, below, show us at Cornwallis Court and Maggie, Irene and Carol with Ian, the manager of the Time Out Club.

Lastly, a final reminder about our 'June in Tune' festival at the Blackbourne on 29th June. Come along and see the Wesley Ukes, plus other bands and a comedy group. Entry is free and there will be food and drink available, together with various craft stalls. The fun starts at 12 midday. We look forward to seeing you all there.

For information, please call Kevin on 07710 149040 or Carol or email: Kevin.Knock99@gmail.com



SUFFOLK BOOKKEEPING

Our Services; Bookkeeping, Payroll, Management accounts, tax returns, year-end accounts, CIS returns

Backed by years of experience in the field, we boast a wealth of knowledge and expertise in bookkeeping practices. From basic ledger entries to intricate financial analysis, we have honed our skills to deliver accurate, timely, and reliable services tailored to meet your specific needs.

Contact us for more information;
info@suffolkbookkeeping.co.uk
01284 610104
07985 589968

KEEPING YOUR COOL WITH A PLEATED ROOF BLIND



As the warm weather is slowly approaching (hopefully) it is time to start considering pleated roof blinds for your conservatory or skylights.

Spend your summer in a cool space instead of working up a sweat! These are the perfect solution. It's also a great way to protect your furnishings from the bright sunlight.

If you're questioning how, you will open and close these blinds, worry no more as we offer a motorised option for your ease.

Pleated blinds are also great for winter, as they help to keep the warmth in during those colder months as well as keeping the warmth out during the summer.



Give us a call or pop into one of our showrooms to discuss your window dressing needs...

We are located on...

79 Northgate Street
Bury St Edmunds
IP33 1JD

2-4 Old Station Road
Newmarket
CB8 8DN

One of our sales advisors will be on hand to help with any question or queries.



www.hartwellblinds.com

Bury St Edmunds: 01284 753310

Newmarket: 01638 665656

Cambridge: 01223 297177

e: info@hartwellblinds.com





Locality Budgets:

The application process for locality budgets for 2024/25 is now open and we would welcome applications from any community group. Do get in touch with either of us for more information and for an application form. More details are also available on the website: <https://www.midsuffolk.gov.uk/web/mid-suffolk/w/locality-awards>

Elmswell to Woolpit footpath:

The delays in securing the long-awaited pedestrian and cycle path between Elmswell and Woolpit are very disappointing. However, work to achieve this continues, and the section of path due to be completed by Goldstar from their entrance onto Rectory Lane, Woolpit is now almost finished. We have asked if the path where it currently enters Rectory Lane can be extended further down onto the layby, due to safety concerns about vehicles driving into and out of the cricket club.

Car park behind the Woolpit Health Centre:

We remain in discussion with Mid Suffolk officers to ensure that flooding and landscaping issues in the car park are resolved, and that EV charging points are up and running without further delay. This will require engagement from the Health Centre regarding the original plan that they take over management via a lease, and now needs urgent resolution.

Housing:

- ◆ A programme of improvements is being prepared for council tenants, including a better system for booking appointments with the service team. This is in response to some very negative feedback from tenants following a recent 'satisfaction survey.'
- ◆ The council has successfully gained an £800K grant to decarbonise council housing stock. This will assist with ongoing work such as improving insulation and replacing oil and older gas boilers with air source heat pumps.
- ◆ The Housing Solutions Team has been shortlisted as Team of the Year in Housing Heroes awards, for their work in supporting people out of homelessness/in need of emergency housing.



Free Compost event – cancellation:

Due to the imminent election, the planned free compost collection event arranged for 23rd June at Meadlands Social Club, Stowmarket, has been cancelled. Hopefully an alternative date will be announced soon.

Care Village – outline planning application DC/23/05651:

There have been a number of public comments submitted to date regarding this application, all accessible via the MSDC planning portal. Consultation is currently listed as due to end 3rd June, and it is likely that a date to call this matter to committee will be identified in the not-too-distant future.

Councillor drop-in sessions:

We continue to hold monthly sessions in Elmswell and Woolpit, where we're pleased for residents to meet with us. The next few sessions are:

- Thursday 20th June 10-12 Teacups Café, Woolpit
- Thursday 18th July 10-12 Teacups Café, Woolpit
- Tuesday 13th August 10-12 Wesley Café, Elmswell



District Councillors for Elmswell and Woolpit:

Councillor Sarah Mansel	07860 829517	sarah.mansel@midsuffolk.gov.uk
Councillor Jen Overett	07928 512591	jen.overett@midsuffolk.gov.uk



LOOPEE LOO TOILET HIRE LTD

SERVICING THE BURY ST. EDMUNDS AREA

We will deliver and collect to your required location, on a short or long term hire, furthermore ensuring they are maintained and cleaned regularly with amenities replenished including toilet roll and hand sanitiser.

For more information please contact us:
Telephone: 01359 270100
Email: info@loopeeloo.co.uk

Unit 15 Woodlands Business Park, Rougham Industrial Estate, Bury St Edmunds, Suffolk, IP30 9ND

Made to Measure

Curtains, Cushions & Roman Blinds

Fabric Samples Available

Over 35 Years' Experience

Free Measuring Service Available

Call Dena on 07842110240 for a free quote

WE LOVE
SELLING HOUSES
ALL YEAR ROUND



SPRING



SUMMER



AUTUMN



WINTER

When you sell your home, you're looking for an estate agent which fits your needs. Here at allhomes we offer you innovative marketing techniques, no matter the time of year we have you covered.

allhomes.uk.com

01359 234444
mail@allhomes.uk.com

Book a FREE property valuation with us today



KARATE CLASSES

THE BLACKBOURNE, ELMSWELL



BOOK A FREE TRIAL CLASS

f ELMSWELL KARATE @ 07752 328024

Arboricultural & Landscaping Solutions

- All Aspects of Tree Surgery
- Soft & Hard Landscapping
- Maintenance & Lawn Care
- Fencing
- Domestic & Commercial
- Fully Insured
- NPTC Qualified



For more information please visit:
www.greenscenetreesurgery.co.uk

GREEN SCENE

PLEASE CONTACT US TODAY FOR FREE QUOTATIONS & ADVICE

Phone: 01359 298141 Mobile: 07866 866 880

Email: greenscene@hotmail.co.uk



A couple of pictures from last year's Finals Day showing the Pairs Competition



FOX BOWLS CLUB

The 2024 league season has got off to almost the best possible start. I say 'almost' because all of our teams are not sitting on top of their respective leagues, although Dick Burch's Thursday team is doing exactly that having beaten second-placed Stanton Wolves and three other teams below them. Most of the teams that we have beaten are in the top half of the league, so the signs are good for the future. Our two Monday teams are faring well with Fox 1 currently 2nd and Fox 2 in 5th place. Fox 2 defeated Fox 1 in the season opener and include table-topping Wortham among their conquests, so clearly, they are destined to move up as the season progresses. The Tuesday Area D team is holding its

own with tables and results difficult to come by but the mood of the team is quite enthusiastic.

The focus of attention at the moment is on the upcoming Guinness Cup which we will host on Sunday June 2nd. Much preparation has and is going into the event and our thanks are due to Jenny Murray, who will be the Bury League President next year. Thanks is also due also to the Parish Council who have been most supportive and helpful during our dealings with them. Having no suitable facilities ourselves, we have had to use the Blackbourne and dealing with the EPC has been a joy. The event is open to the public and the 36 of the league's best

bowlers will be taking part so there will be some good bowling to watch. Lunch will be provided for all competitors and helpers on the day but not for the general public. You will be welcome to use the bar and the kitchen will serve tea and biscuits for 50P, but that is all. We can only cater for a fixed number of people.

One more quick reminder about Kevin's June in Tune on Saturday 29th of June with free live music and entertainment, a bar and several stalls and a bowling competition, for good measure!

Peter Edmonds, E.F.B.C.
07860 395720
edmondspeterj@gmail.com



Some of the members of Song Circle coming together in the church of St John the Divine in Elmswell to celebrate in song their latest milestone *Picture Gavin Mills*



SONG CIRCLE CHOIR

Our picture shows the Song Circle choir celebrating the impressive milestone of welcoming their 100th member at a concert in St John's. This after having been formed just 2 years ago as an antidote to lockdown.

The event filled the church, both upstairs and down, and offered a wide repertoire from Les Misérables, through jazz and contemporary classics to a rollicking 'What Shall We Do With The Drunken Sailor'.

Rehearsals are held at 7 different locations throughout each week – the Elmswell get-together happens on Tuesdays at 7.30 in the Memorial Library. **Find out more at songcircle.co.uk**

W
E
L
D
I
N
G
•
T
Y
R
E
S
•
B
R
A
K
E
S

E
X
H
A
U
S
T
S
•
D
I
A
G
N
O
S
T
I
C
S



MOT Centre LTD



MOT CLASSES 4 & 7



- CLUTCHES
- BATTERIES
- CAMBELTS/TIMING CHAIN
- SERVICING
- TRACKING
- WHEEL BALANCING

Mkautosmotcentreltd@gmail.com



MOT: 01359 241158/244421

REPAIRS: 01359 245998



The Workshop
Grove Lane
Elmswell
IP30 9HN

Please note as of February
2023 D A Bevan has been
taken over by MK Autos



**Find us on
Facebook.**

Langleys Conservatories & Windows

Your local family run business established in 1987



Telephone 01284 760345

Visit: www.langleysconservatories.co.uk Email: enquiries@langleysconservatories.co.uk

The best in energy efficient doors and windows!

Improve the insulation values and beauty of your home with the company you can rely on.

Feeling the chill this winter? heating bills getting more and more alarming? Then maybe its time to invest in new energy efficient double or triple glazing from the local company trading since 1986 in Bury St Edmunds. We don't do gimmicks or engineered discounts, we just offer great value for money with a first class service, premium products and guarantees to back it all up. Give us a call to arrange a free quotation on 01284 760345. Don't forget to check out www.Langleysconservatories.co.uk to see all of the home improvement services we offer.

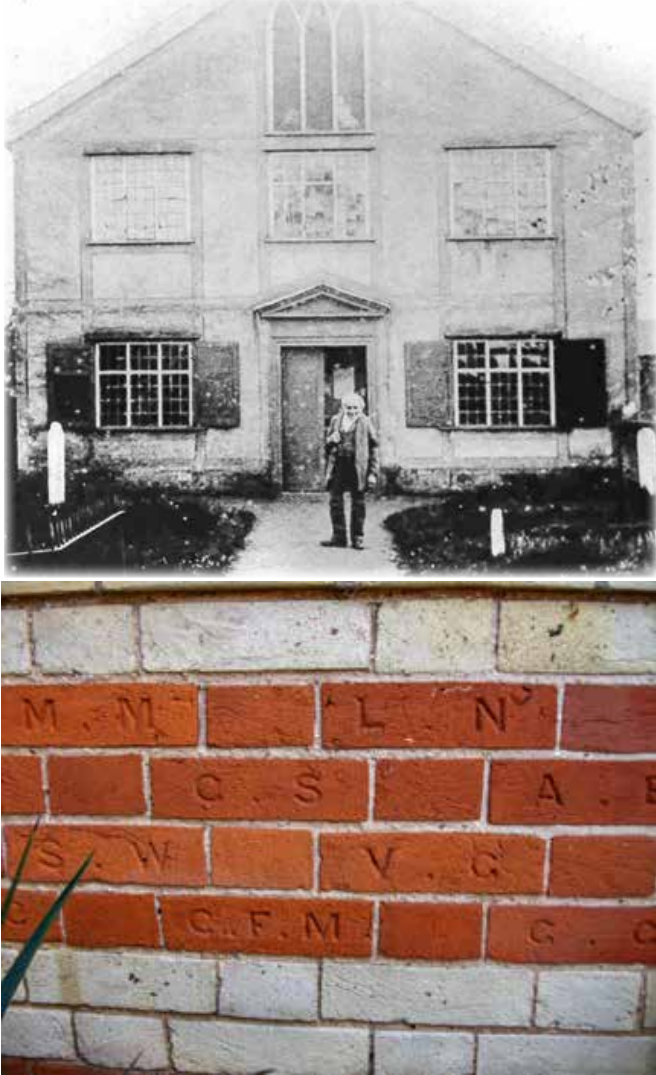


Call today on 01284 760345 or email enquiries@langleysconservatories.co.uk





CORNELIUS FLOWER MATHEWS



A 'Band of Hope' membership card belonging to Frank Mathews...nothing seems to be known about this organisation.

Can you help?



Dear Editors,

What a lovely surprise to read in this month's Newsletter that the photograph of Cornelius Mathews will be one of the canvas prints displayed on the walls of the new Wesley Meeting Room

He is the great grandfather of my husband Peter Mathews and when we were staying with our daughter and family in Red Lodge, Suffolk, in 2013, she drove us over to visit the village for old times' sake. Peter and his sister were evacuated to Elmswell for a year during the War to stay with their grandmother in School Road. Here is a photo of Peter outside the Methodist Chapel and also one of Cornelius' initials on the brickwork. His full name was Cornelius Flower Mathews, which I have just confirmed from his marriage certificate to Lucy Gillson. I noticed that in the Newsletter the surname was spelt with two Ts so do hope it will appear correctly when captioning the print.

We shall be staying with our daughter again later in the year, all being well, so hopefully we might be able to come and visit Elmswell once again.

All good wishes - and thanks for such an interesting read each month.

Kind regards



PARISH COUNCIL REPORT - MAY MEETING

The May meeting of the Parish Council is the Annual Meeting – an AGM but with the ordinary monthly business attached. As with Ordinary Meetings it was held in the Chamberlayne Hall at Blackbourne on Monday 20th with 10 councillors present, along with the Parish Clerk, District Council Ward Member Jen Overett and 4 members of the public.

This report is compiled from that meeting by the Parish Clerk and edited by the Council's Editorial Board which is made up of the Council Chairman, the Council Vice-chairman and one other Member elected by their peers. It seeks to cover some of the more interesting or significant items thought to deserve wider public attention. Included, where appropriate, are matters reported to the meeting by external bodies such as the County and District Council Ward Members or as raised at the meeting by members of the public. Further background and reference to subsequent events are included where relevant. The Annual Reports from various bodies are printed elsewhere in this Newsletter.

The Minutes of recent Parish Council meetings and Committee meetings, together with the agenda for the next meeting, when published, are available on line at elmswell.suffolk.cloud and from the Parish Council Office by arrangement. Bound copies of older Minutes are lodged with the Suffolk County Records Office in Bury St. Edmunds. The most recent Minutes, from the 15th April Council meeting, as approved at this meeting, are posted in Council's notice board at Crown Mill.

Chairman

Cllr Fred Pallett was re-elected unopposed as Chairman of Council for the coming year.

Vice chairman

Cllr David Barker was elected unopposed to the post of Vice chairman.

Reports Written reports were received from the Council Chairman and from Ward Members for the year 2023/24. It was noted that, as neither the Planning Committee nor the standing Complaints Committee had met during the year, neither presented a report.

Accounts

The Responsible Finance Officer prepares an annual Statement of the Accounts for the year ended 31st March. These include the General Fund Balance Sheet, the Assets Register which lists everything that the Council owns and notes disposals and acquisitions together with the original costs and current values, a fully itemised report on income and expenditure over the year and a Supporting Statement which outlines the current financial commitments. The Statement of Accounts was unanimously approved.

Annual Return

The Council's external auditor is appointed by the Government and requires an annual statement confirming that Councillors, aware of the financial and governance processes and procedure which are in place and having had free access to all accounting and other relevant documentation over the year, confirm their approval of the Council's Accounting Statement and Annual Governance Statement. Approval was formally given and minuted and the Chairman and Clerk were authorised to sign the

relevant documents which now go to the External Auditor, Messrs PKF Littlejohn. All of the documents are available for public inspection at any time by arrangement with the Clerk. A formal period for inspection will be advertised between 3rd June and 12th July. They are also published on the Council's website.

Risk Assessments

A schedule of Risk Assessments covering all aspects of the Council's responsibilities, including Financial Risk, was published and the Meeting approved this comprehensive document as representing a proper assessment of the risks and demonstrating their appropriate management. The Chairman signed to confirm Council's formal Approval of the Financial Risk Assessment.

Internal Audit

The Council annually appoints an independent professional internal auditor to examine and report on the finances, processes and procedures which have maintained for the previous financial year. The 2023/24 audit was carried out by Dave Crimmin PSLCC and his Report was received by Council. It was formally noted and minuted that the accounts and other documentation were well presented for audit purposes with no comments or recommendations made.

Officers

The Council has a number of advisory roles and other representative appointments, often filled by volunteers who are not councillors which, good practice suggests, benefits community liaison and brings fresh insights. These were filled by agreement of the Meeting and the posts held by Councillors will be published as part of the schedule of contact details.

Committee memberships

The Council has 2 standing committees. The Planning Committee exists to allow for the consideration of Planning applications when the timetable required by Mid Suffolk, the Planning Authority, cannot be met within the framework of Council meetings. The Committee did not have to meet last year. The Complaints Committee meets when required to deal with complaints about the Council from members of the public. This Committee has not met since 2008.

General Power of Competence

The Meeting noted that the Council continues to satisfy the conditions as set out in the Parish Council (General Power of Competence) (Prescribed Conditions) Order 2112 of the Localism Act 2011 and is, therefore, eligible to act under the General Power of Competence established in the Act and intends to continue to act under the Power for as long as eligibility criteria remain satisfied. Effectively, this allows the Council to do anything that, generally, individuals can do without the need to identify specific empowering legislation.

Mid Suffolk District Council

Cllrs Sarah Mansel & Jen Overett tabled a written report on the past month's activities which is as published in the Elmswell Newsletter.

Suffolk County Council

Cllr Andy Mellen tabled a Report on the last month's activities which included the following:

- **Health Scrutiny** At Health Scrutiny Committee on 17 April, we heard from colleagues in the NHS about their digital integration work, trying to join up the different IT systems they use and to make information sharing easier between health and care



providers. This is especially helpful given the UK's aging population. There was also a report from NSFT on mortality reporting between November 2023 and January 2024 – this relates to the deaths of current patients and those within six months of discharge, with their system of recording having recently been overhauled. You may have read recent articles in the press about their failure to record such deaths correctly in the past. Finally, the committee reviewed an improvement plan produced by James Paget University Hospitals NHS Foundation Trust following the CQC inspection of their maternity services in 2023. Maternity services were found to be inadequate during the inspection, and the report detailed the actions they were taking to address the areas where they needed to improve.

- **Strategy for Care Leavers** On Tuesday 23 April, Cabinet reviewed the Leaving Care Strategy which detailed the ways in which the council wants to improve the service it provides to young people leaving our care. The council acts as a 'corporate parent' to all children taken into care, and must always ask itself with every decision: 'would this be good enough for my child?'. Plans in the new strategy for young people leaving care include help with housing, employment, mentoring and extension of the current council tax exemption scheme for care leavers who are living outside of Suffolk. The Leaving Care service offers support to all young people leaving care up to the age of 25, and care leavers regularly attend meetings at the council to provide feedback and ideas for improvement.
- **New Appointments in Children's Services** As well as the council's new £4.4m investment in additional staff to improve SEND services (detailed in last month's report), two new appointments have been made to leadership. Sarah-Jane Smedmor will be the new permanent Director for Children's Services, with a start date of 8 July. An Independent Chair for the new SEND Improvement Board has also been appointed, Kathryn Boulton, who will start in June and lead the SEND improvement the council needs to deliver, following the poor Ofsted/CQC inspection in

November 2023. The council submitted an action plan after the report was published which has been approved by Ofsted, CQC and the Department for Education.

- **New Government Funding for SEND Schools** The council will be receiving an additional £10.9million from the Department for Education to create new specialist places for children and young people with special educational needs and disabilities. The Department for Education also announced it was funding a new SEND school in Suffolk sponsored by the Unity Schools Partnership, which will provide 126 new places in Suffolk for pupils aged between three and 16 with severe learning difficulties. Earlier this month, the Chancellor also announced a new Alternative Provision (AP) free school, the SENDAT New AP Suffolk Free School, in West Suffolk. The sites for both schools are yet to be confirmed.
- **More Suffolk Homes Eligible for Energy Improvements** More families will be able to secure free assistance to make their houses warmer and more energy efficient using the Warm Homes Suffolk scheme. Residents and landlords of eligible properties can apply for energy efficient measures such as insulation, solar panels or heat pumps, with average funding of £18,000 is available for homeowners, and £12,000 for landlords and their tenants. Warm Homes Suffolk has been funding home energy efficiency improvements for two years, with funding from the Department for Energy Security and Net Zero. To be eligible, the following conditions must be met: (a) Homes must have an EPC rating of D, or below (b) Homes are not heated by mains gas...and then either of the following conditions: (c) Households have a combined pre-tax income of under £36,000 (this was previously £31,000) (d) Homes are in a certain postcode (you can use this [pre-qualified postcode checker](#)), which includes parts of Beccles, Bungay, Bury St. Edmunds, Felixstowe, Great Cornard, Haverhill, Ipswich, Kessingland, Lowestoft, Mildenhall, Newmarket, Rushmere St Andrew, Saxmundham, Sudbury
- **New Resurfacing Investment Gets Underway** Residents across Suffolk are set to benefit from 421 newly surfaced roads

this year which is almost double the number of roads completed last year. This is a result of the extra £10 million investment by the council into resurfacing roads, which was announced last May immediately after the local election result. 102 roads will be surface dressed, whilst a further 319 sites will benefit from a full machine resurfacing during the year. Surface dressing and machine resurfacing. These treatments prolong the life of a road surface, remove potholes and level it out. During the last six months, Suffolk Highways has repaired over 9,000 potholes and resurfaced 41 roads, with a further 278 roads planned for resurfacing in this financial year. Having said this, winter weather always sees an increase in potholes and there is still a lot to do.

Clerk's Report

The Patrish Clerk tabled a Report which included the following:

INTERNAL AUDIT

We part company with Dave Crimmin who has conducted so thoroughly our Internal Audit for the past 3 years. Over and above the consistently clean bill of financial health which he has been able to sign-off, Dave has advised and nudged various procedures and practices very constructively. He has appreciated EPC's 'can-do' attitude and considers that the results recommend this approach to the wider T&PC sector. Our in-house rule that we change our auditor every 3 years ensures fresh eyes, hopefully new perspectives and encourages an independent and professional annual assessment of our finances, processes and procedures.

TAXI-BUS

The ambition to expand the taxi-bus scheme is having to deal with the problems face by Vertas in costing any new initiative at a level that will allow an affordable service. The original deal remains but is heavily discounted by Vertas and this concession cannot be rolled forward into new routes or runs. The project has secured finance from the Department of Transport's Bus Service Improvement Plan and I will meet with the other 3 villages later this month to identify possible ways forward.

Meanwhile, the contention that there might be a better way to provide public transport in rural areas than the traditional bus service model remains

a matter of discussion. I am talking with County & District officers and members along with principals of the developing Brett Valley scheme and established examples in Lincolnshire and Hertfordshire that go some way to addressing the underlying issues. I have regular meetings with SCC Enhanced Partnership Passenger Group which reinforce, to my mind, that a Demand Responsive Transport model using locally based electric vehicles is, eventually, inevitable if a public service is to be continued.

COMMUNITY AFFORDABLE HOMES

The Options Report commissioned from Anthony Collins Solicitors suggests several pragmatic ways forward towards securing our community affordable homes without Right to Buy or Right to Acquire legislation being triggered. This is with Councillors and comments are invited. I met on line with the Chairman and Vice chairman with the lead solicitor involved on 16th May and confirmed next steps based on his report. Consequently, I am in touch with the National Community Land Trust Network towards identifying a suitably experienced Valuer to assess a baseline valuation of the land before once again approaching Registered Providers to gauge their interest in a partnership deal.

WESLEY CAR PARK

The car park at Wesley is up and running and now firmly in the category of things that we can't recall how we ever managed without. The pedestrian / cycle access from Rose Lane is proving to be of real benefit. Once the user-behaviour is established the intention is to encourage safe and sensible parking by delineating bays, at which stage there will be a prohibition of overnight parking by adjacent residents in anticipation of increased use by users of the facility. I am looking with Cllr Pallett at options for dealing with the newly-revealed end wall on the Tavern boundary. It is in a poor state and requires fairly prompt attention.

TURNERS FIELD As discussed with the BWMA, I have attended on site at Turners' Field with a drainage contractor to begin the process of having the land levelled, drained and seeded for use. These initial findings will inform strategies, decision-making and the formal costing process. I have

had several requests that the field which is blighted by the incursion of the swale might best be reserved for informal recreational activity / walking and this will form part of the discussion to be undertaken initially by the BWMA.

ANNUAL PARISH MEETING

The Annual Parish Meeting, held on 15th May, once again demonstrated an apparent lack of public concern regarding EPC processes and outcomes. 11 members of the public attended and there was nothing to be brought forward for EPC action.

FOOTPATH IMPROVEMENTS

I have been working with Cllr Hancock in liaison with SCC Rights of Way officers, Ward Members and others, towards realising one of the aspirations expressed through the recent BMSDC consultation exercise to develop and improve footpath access in the village. 2 major schemes have come forward for consideration: (a) Creating / making good / improving off-road access from Ashfield Road up to Grove Lane and (b) improvements to the route from Blackbourne over Lord's Bridge to Eastern Way. If EPC expressed willingness to contribute some £11,250, being 25% of the estimated joint cost, this work could be undertaken. A third scheme through Lukeswood to the green cemetery and allotments would be funded entirely by BMSDC. The Meeting agreed that, in principle, it supported this initiative as proposed.

Planning results

The Meeting noted the following results of Planning applications made to Mid Suffolk, the Planning authority:

DC/24/01348 Works to tree subject to TPO The Grange, GRANTED EPC made no comment

DC/24/01536 Works to trees subject to TPO St Johns House, Church Road GRANTED EPC supported

DC/24/01321 Rear extension...16 Cooks Road GRANTED EPC supported

DC/24/01360 Extension...75 Eastern Way GRANTED EPC supported

DC/24/01367 Erect dwelling... Royston Farm, Kiln Lane GRANTED EPC objected

Planning Applications

The Meeting agreed to make no comment on an application for tree works at St John's House ref.

DC/24/02004. It was agreed that the following should be supported:

DC/24/01800 Erection of detached out-building (to serve existing dwelling) **Knight Manor, Church Road**

DC/24/01825 Erection of a single storey rear extension, front extension to garage and first floor side extension over including rear glazed canopied veranda **5 Cresmedow Way**

DC/24/02237 Erection of extension, conversion of garage to provide additional living accommodation and erection of new garage **Grange House, 112 Bennett Avenue**

DC/24/02079 Erection of a single storey extension and first floor balcony **5 Prescott Drive**

Objection was made for the following reasons to **DC/24/01834**, the Application for Approval of Reserved Matters following Outline Planning Permission DC/23/02699 dated 24.08.2023 Town and Country Planning (Development Management Procedure)(England) Order 2015 – Submission details for Appearance, Layout, Scale and Landscaping for the Erection of 1No dwelling including details for Conditions * (Cycle Storage, 9 (EV Charging Point) and 10 (Refuse) on **Land adj. to The Stables, Station Road**

- 1 *The proposal is for a house presenting an overbearing mass in the context of this site. The principle behind the granting of an Outline Permission must be that the Reserved Matters can constrain an inappropriate end result. The officer, in granting Outline Permission in this case, made specific reference to the site being able to accommodate a dwelling of similar size and layout to those neighbouring the site with acceptable front and rear amenity space. Clearly this proposal runs counter to that expectation.*
- 2 *The amenity of neighbouring properties at Fox View to the north and on Crown Mill to the east will suffer considerable negative impact both by virtue of overlooking and should be able to rely upon the Planning Practice Guidance stricture that good design should work well for everyone. Design such as this which begins with maximising internal space can produce a result which, as in this case, pays no regard to the neighbouring built environment or to the amenity*



which can rightly be expected within that environment.

- 3 Local Plan policies urge a 'positive contribution' to be expected from development proposals. In this case the result would be a crass imposition on the immediate neighbourhood. It is inappropriate and should not be permitted.

Elmswell Tavern

The Meeting agreed that a Task & Finish Panel be formed comprising, with their concurrence, all current members of the ECE Management Board to produce Heads of Agreement between EPC and a new body of management to take forward the Elmswell Tavern project and to produce a draft constitution of that body. This will be modelled on the BWMA which, for many years, has advised Council on day-to-day issues at Blackbourne and Wesley. It was also agreed that Council should advertise for Expressions of Interest for contractor services for the Elmswell Tavern project. It was noted that this mirrors the process which was undertaken to bring in the refurbishment and new-build at Wesley, a larger scheme delivered on time and within budget.

Crown Mill play area

The recent community consultation exercise held jointly by the Parish Council and Babergh Mid Suffolk District Council had the improvement of the village's play areas as one of the top 4 public choices. The immediate and clear area deserving attention is adjudged to be the play area at Crown Mill which is now 18 years old and showing multiple signs of wear and tear, not least the soft-play surface which is presenting tripping hazards. Against a broad brief, 3 designs have been secured from major suppliers and these will be the beginning of further consultation. A Task and Finish Working party was appointed to take this forward.

Next meeting

The next meeting was scheduled for 17th June at 7.30pm in The Blackbourne. The public are, as ever, welcome to attend all Council and Council Committee meetings and the agenda will always offer opportunities for questions and comment. Agendas are published on line at elmswell.suffolk.cloud and on the Council's notice board at Crown Mill.



ELMSWELL
PARISH COUNCIL
seeks

EXPRESSIONS OF INTEREST

from suitably qualified &
experienced

BUILDING CONTRACTORS

for the refurbishment of
and extensions to the

ELMSWELL TAVERN
at School Road,
Elmswell, IP30 9EE

Enquiries are invited to
Parish Clerk,
Peter Dow

The Council Office,
The Blackbourne,
Blackbourne Road,
Elmswell IP30 9UH

clerk@elmswell.suffolk.gov.uk
01359 244134

Approaches to be
received on or before
21st June 2024

STOWMARKET MODEL RAILWAY CLUB

MODEL RAILWAY EXHIBITION

- 15+ LAYOUTS
- TRADE STANDS
- INFORMATION TABLE
- REFRESHMENTS
- FREE PARKING

£6 ENTRY, ACCOMPANIED
UNDER 12S FREE.

10:30AM - 4PM

SUN 30TH JUN 2024

BLACKBOURNE COMMUNITY CENTRE,
ELMSWELL, SUFFOLK, IP30 9UH

enquiries@stowmodelrail.club

Enquiries on any Parish Council matter are invited to the Clerk, Peter Dow, at The Council Office, Blackbourne, Blackbourne Road, IP30 9UH – right next to the car park and with wheelchair access.

Staffed Monday – Friday 9.00am – 4.00pm
and other times by arrangement

clerk@elmswell.suffolk.gov.uk
Tel. 244134 www.elmswell.suffolk.cloud



Future Council Meetings

Notice of all meetings and agendas is posted on the Council's notice board at Crown Mill and in the community notice board at the Co-op.

June 17th	July 15th	Sept 16th	Oct 21st	Nov 18th
-----------	-----------	-----------	----------	----------

Meetings are held at Blackbourne, beginning at 7.30 unless otherwise notified

VILLAGE INDEX



Useful contacts for community groups & others...feedback is essential.
Do be in touch to correct or add details or to suggest someone else deserving of listing.

Amenities Association	Jean Barker (Sec)	eea@elmswell.org.uk	241135
Art Club	Eddie Douglas	edward.douglas2@gmail.com	
Baby & Toddler Group		elmswellbtgroup@gmail.com	
Baptists	Dave Hollings	davehollings@btinternet.com	241323
BATS (Badminton & Table Tennis)	Mike Burgess Wilson	burgesswilsonmike@gmail.com	
Beavers	Ruth Salmon	ruthcourt4@hotmail.co.uk	
Bingo at Blackbourne	Brian Hawes		07761 125093
BWMA	Peter Edmonds (Sec)	edmondspeterj@gmail.com	07860 395720
Blackbourne – all enquiries	Parish Council office	clerk@elmswell.suffolk.gov.uk	244134
Brownies	Gemma Sutton	elmswellbrownies@hotmail.com	
CAB		advice@midsuffolkcab.org.uk	01449 676060
Carpet Bowls Club	Frank Boxall	jf.boxall@btinternet.com	
Christians Together in Elmswell	Peter Goodridge	elmswellrector@gmail.com	240512
Community Speed Watch	Marie Spampinato	mariespampinato@hotmail.co.uk	07769 715209
Companions	Linda Waspe	linda@labbott.plus.com	
County Councillor	Cllr Andy Mellen	Andy.Mellen@suffolk.gov.uk	
Cricket Club	Ben Whatling (Captain)	benwhatling@mail.com	07760 174811
Cubs	Mark Pernot	mark.pernot@gmail.com	
District Councillor	Sarah Mansell	Sarah.Mansell@midsuffolk.gov.uk	07860 829517
District Councillor	Jen Overett	Jen.Overett@midsuffolk.gov.uk	
Elmswheelians	Trevor Sadler	trevor.sadler@dsl.pipex.com	240908
Elmswild	Mary Feeney	info@elmswild.org.uk	241901
Exchange Afternoon WI	Carol Blissett	carolblissett@hotmail.co.uk	242884
First Responders	Merv	merv.smith@tiscali.co.uk	07909 006 496
Football	Chris Edmonds	edddd101@gmail.com	
Fox Bowls Team bowls at Blackbourne	Rob Dann	rccsdann@btinternet.com	07917 013846
Gardening Club	Nick	elmswellgadmin@btinternet.com	01359 242601
Guides	Viv	elmswellguides@outlook.com	
Health Centre - Woolpit			240298
History Group	Stella Chamberlin	stellachamberlin@yahoo.co.uk	
Ladies Voices (Choir)	Anna Wilton Mills	annawm63@gmail.com	
Library	Miles Row - Manager	Elmswell.Library@suffolklibraries.co.uk	240974
Little Elms	Paula Reynolds / Samantha Willers	info@littleelms.co.uk	240491
Newsletter	Editorial office	eea@elmswell.org.uk	244134
Over 55's Club	Diann Armstrong	Mayfield, Wetherden Road	241002
Parish Council	Parish Clerk	clerk@elmswell.suffolk.gov.uk	244134
Police Emergencies			999
Police; non-emergencies	Mid Suffolk South SNT	headquarters@suffolk.pnn.police.uk	101
Poor's Land Charity	Peter Goodridge	elmswellrector@gmail.com	240512
Power cuts		Powwercut105.com	105
Rainbows	Jen & Lizzie	elmswellrainbows@yahoo.com	
Royal British Legion	Norman Plumpton (Biff)	nplumpton@aol.com	07707 524722
School	Mrs Ash	admin@elmswell.suffolk.sch.uk	240261
Scouts	Paula Hollings	ddc.paula@stowmarketscouts.org.uk	07828 562485
St John's Church	Peter Goodridge	elmswellrector@gmail.com	240512
Sewing Bee	Isabel Burgess	isabel.burgess@live.com	
Village Tree Warden	c/o Parish Clerk	clerk@elmswell.suffolk.gov.uk	244134
Wesley – all enquiries	Parish Council office	clerk@elmswell.suffolk.gov.uk	244134
WI - evening	Tricia McNeeney	triciamcneeney@gmail.com	241197
Youth Football	Wayne	wsast@hotmail.co.uk	

**Enquiries on any Parish Council matter are invited to the Clerk, Peter Dow, at The Council Office, Blackbourne, Blackbourne Road, IP30 9UH - right next to the car park and with wheelchair access. Staffed Monday - Friday 9.00am - 4.00pm and other times by arrangement.
clerk@elmswell.suffolk.gov.uk Tel. 244134**

**IF YOU ARE NOT HAPPY THAT YOUR DETAILS APPEAR HERE,
PLEASE DO BE IN TOUCH VIA eaa @elmswell.org.uk**

What's On in Elmswell ?



To be included in our events diary make sure you send separate notification of your announcement.

For a full year's calendar of what's booked at Blackbourne, please go to the Parish Council website at www.elmswell.suffolk.gov.uk - it might help you in planning dates for your events.

June 2024

- 3 2pm Ladies Friendship Group at Elmswell Baptist Church - Photojournalism by Andy Abbott
- 5 Exchange WI 2.00pm at Wesley. The work of the Samaritans. Speaker Alison Chown
- 6 Over 55's Club Orwell Lady Afternoon Tea Cruise
- 11 Elmswell WI 7.30pm at the Wesley - Indoor Kurling with Alison Handley
- 13 ELMSWELL HISTORY GROUP, 7pm AGM in Wesley Chapel, immediately followed at 7.30pm by Speaker Sarah Doig's talk "The Real Basil Brown"
- 13 Food 'n' Friends at Elmswell Baptist Church midday
- 18 Elmswell Gardening Club 'Succulents' with Paul Sprakin at 7.30pm in the Wesley Chapel
- 20 Over 55's Club Entertainment by G & T Music
- 28 Bingo - Doors open 6.30 eyes down 7.30 all welcome

July 2024

- 3 Exchange WI 2.00pm at Wesley. A craft demonstration. Speaker Margaret Brackenbury
- 4 Over 55's Club Strawberry Supper & Bingo
- 9 Elmswell WI 7.30pm at the Wesley - Birthday Fish & Chips
- 11 Food 'n' Friends at Elmswell Baptist Church midday
- 13 ELMSWELL HISTORY GROUP Summer Outing to Ely Museum; own transport, meet on site at 11.30am. Details & Tickets - 01359 242601
- 16 Elmswell Gardening Club Summer outing to RHS Hyde Hall in Essex
- 18 Over 55's Club Bob Whiting entertains Open Evening
- 26 Bingo - Doors open 6.30 eyes down 7.30 all welcome

August 2024

- 1 Over 55's Club Outing to The Hut at Felixstowe
- 7 Exchange WI 2.00pm at Wesley. Lighting the Fuse. Speaker Lucy Lewis
- 15 Over 55's Club Bingo
- 29 Over 55's Club Carvery and Circus at Gt Yarmouth
- 30 Bingo - Doors open 6.30 eyes down 7.30 all welcome

September 2024

- 4 Exchange WI 2.00pm at Wesley. Songs from the Sixties. Barry, Pete and Nicky
- 12 Food 'n' Friends at Elmswell Baptist Church midday
- 17 Elmswell Gardening Club 'Before & After' - landscaping ideas. Bradley Morris
- 27 Bingo - Doors open 6.30 eyes down 7.30 all welcome

October 2024

- 2 Exchange WI 2.00pm at Wesley. Fraud Awareness. Speaker Jane Riches
- 10 Food 'n' Friends at Elmswell Baptist Church midday
- 25 Bingo - Doors open 6.30 eyes down 7.30 all welcome

November 2024

- 6 Exchange WI 2.00pm at Wesley. History of the British Legion and the Poppy Appeal Speaker Mandi Cox-Osborne
- 14 Food 'n' Friends at Elmswell Baptist Church midday
- 29 Bingo - Doors open 6.30 eyes down 7.30 all welcome

STOP PRESS

Regular sessions at Blackbourne & Wesley include:

- KARATE** with Lewis - Friday 5.00 - 7.00 info@greatheadma.com
 - JAPANESE JUJUTSU / SELF DEFENCE** - Monday & Wednesday 6.30 - 8.30 ryoishintowaryuheiho@gmail.com tel. 07711 680262
 - BABY & TODDLER GROUP** - Monday mornings elmswellbtgroup@gmail.com
 - BATS- badminton / table tennis / pool** at Blackbourne Friday nights 7 - 9.30 simon@coakleyandtheaker.co.uk
 - BOWLS** - barryhayward1902@gmail.com tel. 240951
 - GUIDES** - elmswellguides@outlook.com
 - FOOTBALL** - Chris Edmonds edddd101@gmail.com
 - RAINBOWS** - elmswellrainbows@yahoo.com
 - JUNIOR FOOTBALL** - smyth98@hotmail.com 07717 841591
 - CUBS** Tuesdays 6.15 - 7.30 - mark.pernot@gmail.com
 - BEAVERS / SCOUTS** - Wednesday 5.45 - 9.15 ddc.paula@stowmarketscouts.org.uk
 - OVER 55'S** - every other Thursday 6.30 - 10.30 Diann Armstrong tel. 241002
 - CIRCLE DANCING** - Thursdays 1.45 - 3.15 jenlerner@gmail.com
 - TREFOIL GUILD** - 1st Tuesday monthly lesley.grount@btinternet.com
 - MARDLE QUILTERS** - last Friday monthly carpajak@aol.com
 - MOO MUSIC** - Fridays 12.45 - 3.15 bury@moo-music.co.uk
 - WI** - evening at Wesley 2nd Tuesday monthly 7.30pm triciamcneeney@gmail.com
 - WI** - afternoon at Wesley 1st Wednesday monthly Carol Blissett carolblissett@hotmail.co.uk
 - ART CLUB** at Wesley every Tuesday 9.00 - 12.00 Eddie Douglas edward.douglas2@gmail.com
 - HISTORY GROUP** at Wesley 2nd Thursday monthly 7.30 stellachamberlin@yahoo.co.uk
 - GARDEN CLUB** at Wesley 3rd Tuesday monthly 7.30 elmswellgadmin@btinternet.com
 - CARPET BOWLS** - Wednesday 7pm at Wesley - jf.boxall@btinternet.com
 - COMPANIONS** - every other Friday 10 - 12 at Wesley - linda@abbott.plus.com
 - PILATES** - Monday & Friday mornings - suzanne@triformpilates.co.uk
 - BINGO** - Blackbourne, last Friday monthly doors open 6.30...eyes - down 7.30
 - ARTS SOCIETY OF WEST SUFFOLK** first Tuesday monthly, October-June. Diana Hollins 01449 736930 theartssociety-westssuffolk.org.uk
- If we've missed you out, do let us know...all enquiries to Ann at the Council Office Tel. 244134 Email clerk@elmswell.suffolk.gov.uk

Your Newsletter Fact File

For the next 3 months we need copy by: June 26th, July 24th, August 28th

Contact us on **01359 244 134** for all Amenities Association business, Newsletter and adverts.

Our new email address is **EAA@elmswell.org.uk** Your editors: Jean Barker, Maggie Bushell, Peter Dow

Published on the first Friday of every month by the Elmswell Amenities Association

Reg. Charity No. 304879. 2,000+ copies delivered free to households and to businesses in the community. A volunteer enterprise entirely supported by advertising.

PLEASE SUPPORT OUR ADVERTISERS



BULBS - ALTERNATORS - SHOCK ABSORBERS - COIL SPRINGS - WHEEL ALIGNMENT - REPAIRS - MOT PREP - WHEEL BALANCING - PUNCTURE REPAIRS

PROMECH

We cater for ALL your vehicle needs

SERVICING

ProMech Elmswell

MOT CENTRE

ProMech Elmswell

REPAIRS

ProMech Elmswell

DIAGNOSTICS

ProMech Elmswell

EXHAUSTS

ProMech Elmswell

TYRES

ProMech Elmswell

SUSPENSION

ProMech Elmswell

TRACKING

ProMech Elmswell

CLUTCHES

ProMech Elmswell

BRAKES

ProMech Elmswell

BATTERIES

ProMech Elmswell

AIR CON REGAS

ProMech Elmswell

RECOVERY

ProMech Elmswell

COURTESY CARS

ProMech Elmswell

CAMBELT/ CHAIN REPLACEMENT

ProMech Elmswell



KEY BATTERY REPLACEMENT - STARTER MOTORS - SPARK PLUGS - ELECTRICAL FAULTS - AIR BAG FAULTS - ENGINE MANAGEMENT LIGHTS - TPMS RESET

Most manufacturers recommend you service your car's air-con every two years, but many people wait until it's not blowing cold air. **Have you??**

Poor working air con will work the engine harder, thus using more fuel. It's not worth putting off a system check. **Call and book yours today.....**



01359 242420

Find us at: Station Road Industrial Estate, Elmswell, IP30 9HR