

'Like a friend dropping in'



The Elmswell Newsletter



More than thirty years of Parish Record... all the Community News...

MAY 2024

On line at elmswell.suffolk.cloud



Who's the lady with the celebrated Norwich FC fan?

... see page 5



Who's the young lady with the dancing girls?

... see page 5

Wesley

ELMSWELL

EST. 2020

Come & join us for

CHIPS AT THE CHAPEL

THURSDAY 16TH MAY ARRIVAL

6.30PM

FISH & CHIPS OUT OF THE PAPER
IN THE WESLEY CHAPEL,
INCLUDES A GAME OF BINGO

SOFT DRINK, TEA OR COFFEE INCLUDED
FEEL FREE TO BRING A BOTTLE TOO!



£6 PER PERSON

Pre booking & payment is required, please secure your place by booking at the Wesley or call 01359 244134.

Grant aided by BMSD



Published on the first Friday of every month by the Elmswell Amenities Association Reg. Charity No. 304879.
2500 copies delivered free to households and to businesses in the community. A volunteer enterprise entirely supported by advertising.

PLEASE SUPPORT OUR ADVERTISERS

EAA@elmswell.org.uk



Our editorial is designed to inform and to encourage debate.

If you wish to comment, please do so via the office or by email at; eaa@elmswell.org.uk

We reserve the right to edit any such contributions that we may use in a subsequent edition.



Our old friend HL Mencken famously observed that, 'For every complex problem there an answer that is clear, simple and wrong.'

Our picture here shows a group who begged to differ. In 2015 they gathered in support of a solution to a complex problem. Their proposal was clear and simple, but right.



The complex problem was the proposal from the Methodist Church to demolish their Wesley Hall and replace it with a house. As a Planning Permission Applicant, they took up the suggestion that they should render on to Caesar that which is Caesar's and render on to God that which is God's. They argued Caesar's case. The hall was, 'not sustainable and the Methodist Church must now seek alternative use of the site and/or buildings'. The village noted the ominous plural, 'buildings'. One of the buildings, the Victorian chapel, seemed worthy of a better fate than yet another des. res. The other, the 1950's hall, was disastrously inadequate. Together they were a Community Challenge.

What made the problem, 'complex', was the failure of a very small but effective group of users of the hall to grasp that the days of beetle drives and village dances featuring The Freddy Ford Four were gone. They argued that a lick of paint and some insulation stuffed under the corrugated asbestos roof would bring a whole lease of life to the sad old place.

Step forward a few slightly more ambitious residents, several of whom are pictured. Some are, sadly, no longer with us. Some remain stalwarts of what was 'Wesley Hall' in its new role as 'the Wesley'. Some go on to continue the fight to help keep our village vibrant and active by taking on the Elmswell Tavern challenge. All deserve credit for having the vision and determination to deliver a remarkable community victory.

Mid Suffolk Planning officers, encouraged by the Parish Council, decided that, 'sufficient community support has been demonstrated', for them to, 'seek to guard against the unnecessary loss of valued facilities', and to refuse Planning permission.

Success, and, indeed, such success has this forward-thinking provide that this month saw the opening of the adjacent plot next to Wesley as a 24-space car park to help deal with the demand that Wesley has since generated.

A similar, 'complex problem', happened immediately next door when Greene King decided to sell off their pub site with Planning permission already secured for 8 executive dwellings. Luckily, the Elmswell spirit was unbowed by the battle for Wesley and a clear, simple and (so far) effective way forward was identified, allowing another adventure to unfold before us. Which it continues to do as the Parish Council assumes main responsibility for driving the Elmswell Tavern project and immediately manages to secure £500,000 in funding to move things along.

The old Railway Tavern and the old Wesley Hall served us well. In very different ways they formed community bedrock, solid and dependable places for people to meet and mix, to marry and to be merry. For a couple of hundred years between them they offered community a chance to flourish. But there are, global warming permitting, more years ahead of Elmswell than there are in its past.

In 1688 a Swiss physician called Johannes Hofner coined a term for a condition observed in people he was treating for acute homesickness. He called it, 'nostalgia', and it was, in those days, recorded as a cause of demise on death certificates. We now see this as a cultural issue rather than a clinical problem. We analyse it as a result of too much change in too short a time. And we wallow in it - from Abba avatars to hats urging, Make America Great Again.

When Elmswell invests time, money, effort, and not forgetting sweat and tears, in its future, it is investing in an indeterminate number of days and years to come in the hope that it will maintain the community cohesion which it has had in the past.

In another couple of hundred years the Elmswell Newsletter may well be transmitted by microwave to neural receptors implanted by one of Elon Musk's successors directly into the cranium of Elmswell residents. The fights to save, establish and develop Wesley, the Tavern and whatever follows will be the sort of history we celebrate on page 13 in this month's magazine.

The complex problems represented here will be forgotten. But the outcomes will, it is to be sincerely hoped, remain.

Let us have no recourse to the jingoistic, 'Make Elmswell Great Again'. Many of us think Elmswell is great right now. With the right support for those who volunteer to innovate and fight on our behalf, we can, simply, keep Elmswell great.



ELMSWELL ART CLUB

This month we would like to demonstrate that our members are skilled at other arts and crafts, as well as drawing and painting.

Our first example is by Linda Stephenson; Linda has produced the following images of the "Green Man" on natural wood using a method known as "Pyrography"



Pyrography is the art of decorating wood with burn marks resulting from the controlled application of a heated tool such as a solid-point burner.

The Green Man is believed to symbolise the cycle of life, death and re-birth; a Pagan symbol which heralds the arrival of Spring after a long winter and the renewal of lush vegetation.

Secondly, we have a row of soft dolls that were created by Jean Grayling and Jean explains below how these dolls are put together.



Jean originally got the idea from a book of soft doll patterns by Valerie Janitch and used to make them up for her grandchildren – *"although they are not strictly dolls to play with, they had fun lining them up and enjoying the detailed costumes"*.

Jean sourced her materials, such as felt, pipe cleaners, sequins, beads etc., from craft shops; the dress materials were obtained from fabric shops offering 'bundles' (small parcels of varying rich fabrics, velvet, lace etc) *"which were great as you never knew what lovely offcuts could be found until you opened it"*. Doll house suppliers and local gift shops were the places to find accessories, such as small baskets, tiny chairs and little animals.

The basic doll was cut out in felt, then stuffed with polyester filling, using pipe cleaners for arms and neck. An air-dried clay base was then used to stabilise the doll.

You may have glimpsed a picture of a bee lurking behind Jean's dolls; this is shown below in its full glory and was produced by Kelvin Fellingham.



Kelvin used some very clever tricks to produce his life-like image of a bee; in order to provide texture for the bee's body, he used acrylic paint with a stippling effect. For the wings, he used baking paper to give colour and transparency and, finally, pen and black ink provided the details of hairs and the veins in the wings. Kelvin certainly created a buzz in the meeting that day!

Art Show and Sale 2024

Finally, we have already started planning our annual Art Show and Sale which will take place on 21st and 22nd September at the Wesley; this year we will also be including other forms of arts and crafts that our members are creating. Watch this space for more details of our Show as the date approaches.

Eddie Douglas

ELMSWELL ART CLUB MEETS EVERY TUESDAY FROM 09:00 TO 12:00 AT THE WESLEY AND NEW MEMBERS ARE ALWAYS WELCOME.



'I'm in PAIN!' Can Chiropractic help me?

Your initial visit will include:

- A consultation with the Chiropractor
- A thorough spinal examination with Orthopaedic & Neurological tests
- A confidential report of findings
- An explanation of our treatment programme if we determine Chiropractic can help you.

Call TODAY for an appointment

Please visit our website for further information

www.abbeychiropractic.com

Registered with The GCC, RCC, SCA & BCA



6 Glastonbury Road
Bury St Edmunds,
IP33 2EX

01284 706570



7 Stowupland Road,
Stowmarket,
IP14 5AG

01449 612620



WESLEY

Coffee Shop...

where you are warm and welcome

**Weekdays 9.00 – 4.00,
Saturdays 9.30 – 4.00**

ELMSWELL

& Maintenance Services

ELECTRICAL

For all your Electrical jobs big or small call
Grant on 07597385744 or
email elmswellems@gmail.com



Wesley

ELMSWELL

EST. 2020

Come & join us for



CHIPS AT THE CHAPEL

THURSDAY 16TH MAY ARRIVAL
6.30PM

FISH & CHIPS OUT OF THE PAPER
IN THE WESLEY CHAPEL,
INCLUDES A GAME OF BINGO

SOFT DRINK, TEA OR COFFEE INCLUDED
FEEL FREE TO BRING A BOTTLE TOO!



£6 PER PERSON

Pre booking & payment is required, please secure your
place by booking at the Wesley or call 01359 244134.

Grant aided by BMSD



KH

Kevin Hollings
KITCHEN STUDIO



Unit 14 Lodge Works, Stowmarket Road,
Old Newton, IP14 4EE
01449 257160 www.kevinhollings.com
info@kevinhollingskitchens.co.uk



House completions



Will writing



Family matters



Business legal advice

"It's business as usual..."

We may be working slightly differently
but we've never been closer to our clients"



Burnett Barker
Solicitors

Call **01284 701131**
or visit www.burnettbarker.co.uk



ELMSWELL WI

At our April monthly meeting, our President, Brenda, thanked members for their contributions for Elmswell Foodbank. Elmswell WI has collected items each month since the Foodbank started and we know they are very grateful for these items.

A couple of months ago we had a speaker, known as the Knicker Lady, who told us about ladies in the war zone in Ukraine and in the refugee camps on the Greek Islands having no knickers. We reported the meeting in the Elmswell Newsletter and we have had a gentleman contact us to say he has some children's books in Ukrainian and he wanted them to go somewhere where they can be used. We contacted the Knicker Lady as she has many Ukrainian contacts and she was delighted to be able to have them. We have also had some more donations of knickers, including some from the members of Elmswell Exchange WI, so thank you

everyone who has given them.

At our meeting last month our speakers were from the Women's Refuge in Bury St Edmunds and they said they needed some help with decorating a room at the refuge. Three of our ladies have now done the decorating for them.

Our speaker for this month was Lily Indra from the Walking Wok. Lily told us that she had started cooking at her sister's restaurant in Borneo and started the Walking Wok originally cooking from her home but she is now based in Elmswell. She cooks for small and large events, including dinner parties, weddings and corporate events and has cooked a meal for 400!

Lily demonstrated how to cook a delicious pork-based recipe using many different ingredients and spices from around the world. A wonderful aroma filled the Welsey. Within quite a short while Lily had produced a very tasty dish which we all had a chance to taste. As

Lily can have up to six people at a time to her premises to have a go at cooking her wonderful recipes, some of us may give it a try. As she also does gift vouchers so we could buy them for those friends and family who enjoy cooking.

We continue to have our Coffee and Chats at the Wesley each month and have plans for a visit to St Edmundsbury Cathedral Ancient Library, which is the oldest parish library in the country, founded in 1595, which has some manuscripts from the 12th century.

This month is when our yearly subs are due and we had six new ladies join.

We are a very friendly bunch so if you fancy giving us a try then come to our next meeting on 9th April, 7.30 pm at the Wesley.

Rosie Collins
01359 241652



OVER 55'S CLUB

As a follow up to last month's report our AGM was held on March 28th when the Chairman welcomed everybody to the meeting

Following the formal business it was time to elect a committee for the next twelve months, on a proposal by Jean Williamson and seconded by Bernie Francis on a show of hands Diann was duly elected to serve as Chairman for another term of office.

Diann then proposed that the same committee be re elected to serve with her for another year it was seconded by everybody present and carried.

The evening then continuing with Refreshments and Cash Bingo with Diann winning on at least three times during the session.

The Fish & Chip Supper went down well which included a dessert of Pears Jelly and Ice Cream.

Into May we welcome Tyler Kemp on May 9th for the end of WW11 celebrations visitors are always welcome to join us for Music events just pay £5 on arrival this will be followed on May 23rd with an evening of Cash Bingo.

On Saturday June 29th we will be running a Tombola and Cake Stall supporting our friends from the Wesley Ukelele Band at their "JUNE in TUNE" music festival at the Blackbourne entry is free so please come along and support a local charity event

Our events for June onwards can be found in the Whats on Section for June onwards at the rear of the Newsletter.

More information ring Grant on 240943

ELMSWELL EXCHANGE W.I.

Mary welcomed members to the meeting as well as our delegate for the National meeting.

Our speaker this month was Peter Lawrence who is always an entertaining speaker. This time his subject was "Art on London's Streets". He covered well known places such as Trafalgar Square and the Edward Lutyens fountain. The tour around London included the Kinder Express statue at Liverpool Street station and Paddington Bear of course at Paddington station. In Bethnal Green there was an example of Banksy's work. Peter made us aware there are lots of examples of street art across the ages for us to look out for on our next visit to London.

The competition was a painted pebble/stone. 1st was Barbara Carter, 2nd Mary Chown and 3rd Jan Clark.

Next month someone from the Bury Rickshaw team will be speaking to us. The competition is a decorative fan.

This will be followed by our AGM.

Visitors and new members are always welcome.

Carol Blissett 242884



PAUL SCASE Home Improvements



Painting

- Using the best named paints to give you a professional finish
- Colour charts provided to give you the best choice of colours

Carpentry

- Wardrobes made to your design
- Floor to ceiling, wall to wall

- General Carpentry & DIY

Excellent Rates

Mobile: 07745 250440



Your *property* partner



For all your *residential* needs

- ✓ 30+ years in business in Bury St Edmunds & beyond
- ✓ Expert knowledge in residential lettings & management
- ✓ Up to date with all property legislation
- ✓ FREE residential rental valuations & investment advice
- ✓ Accredited by ARLA, The Property Ombudsman & The RICS

USAF housing specialists - more properties wanted



📍 The Annexe IP33 1EL 📞 01284 702626
🌐 www.hazells.co.uk 🐦 📘 📺



W. Jarvis & Son Tree Services & Landscapes



Scan me!



All aspects of tree surgery, landscaping and fencing undertaken.

Fully insured, 24hr callout, council approved contractor with over 40 years in the industry.

Call for a free estimate & advice

T: 01359 241958

M: 07891 208710 • 07850 046504

Visit our website for information about our company and the work we do
www.wjarvistreeservices.co.uk



Dee Suchak is seen here in August 2015 with a petition which many villagers had signed backing the Parish Council's strong objections to the proposal to to-locate our Post Office.

Dee and the village won the day and we have had the benefit of his friendly and efficient service ever since - until last month when he decided to take well-earned retirement. We might still see him on occasional holiday relief, but this crucial village service is now in the capable hands of Bryany Bartram.

Our thanks to Dee who has stayed calm and friendly during testing times. He has a gift for conducting the often complex business of an ever-expanding range of Post Office services whilst maintaining a genuine interest in his customers.



NEW OPENING HOURS: Closed on Friday, Saturday & Sunday

Monday	9 – 1	1.30 – 5.30
Tuesday	9 – 1	
Wednesday	9 – 1	
Thursday	9 – 1	



Our cover picture shows . . .



Lifelong Norwich City Fan, but otherwise staunchly Suffolk, Elmswell's very own Dick Burch who's loyalty to the Canaries was rewarded when he was Guest of Honour at the recent derby match with Ipswich Town. Dick's entry in our archive edition of, 'Who's Who in Suffolk', lists one of his hobbies as, 'Winding -up Ipswich Town fans in the pub'. The score on the day helped-Norwich, with Dick's help won 1-0.



Sylvia Walton celebrates her lively maturity at a recent birthday event at Blackbourne. Characteristically, Sylvia used the occasion to entertain her many friends, including with a Burlesque show and to raise £450.00 for the St Nicholas Hospice, for which support she thanks everyone concerned.

Keith Avis Printers

68 High Street, Hadleigh, Ipswich IP7 5EF
jason@keithavis.co.uk | 01473 823366

PRINTING

DESIGN | PUBLISHING | SIGNAGE



Need a Display Board?

Correx: A lightweight, rigid corrugated sheet, favoured by estate agents.

Dibond: A sandwiched panel of two aluminium sheets with a rigid core.

Foamalite: Light foam centred board, ideal for internal displays.

Foamex: A solid, strong yet lightweight material, extremely versatile.



Correx



Dibond



Foamalite



Foamex



Andrew Bingham

INDEPENDENT FUNERAL SERVICE

Local Caring Independent Funeral Service

www.andrewbingham.co.uk

01449 771666

Golden Charter
Funeral Plans

The Nutshell, Milton Road South,
Stowmarket, IP14 1EZ



Don't just take our word for it ...

“ From the outset the service we received was prompt, efficient, first class and friendly - with good feedback. ”

“ Your service was helpful & professional from start to finish. We were most impressed. ”

“ My house sold within days of you putting it on the market and thereafter you were always on the end of your phone, in order to answer my many questions. ”

“ Your knowledge of the local property market proved invaluable and your attention to potential purchasers, a great time saving asset. ”

“ I have used Coakley & Theaker Estate Agents to sell three properties, all of which they handled extremely professionally. ”

“ We can only praise Simon for the solid, professional and enthusiastic work that went into the sale. ”

“ Your patience and liaising went a long way to bringing everything to the right conclusion. You gave it the personal touch which goes a long way. ”

“ The professionalism and 'go the extra mile' attitude, which you do not seem to get from the big corporate agents, will be the reason we shall be returning in future. ”

“ Your experience and calm and collected manner really showed through. ”

“ We were grateful for your sound advice, help, willingness to be flexible and of course for quickly finding us a buyer. ”

“ Your diligence, patience and constant shepherding of the multiple parties involved has seen the matter through to its positive conclusion. ”

“ From start to finish you kept us informed on everything, making the whole experience stress-free. ”

“ I recommend their services as you are treated more as an individual human being and not a number. ”

“ Dealing with Simon was a comfort during what was a daunting process. ”

PLEASE CALL FOR YOUR FREE VALUATION
01284 769691 • 01449 737706 • 07803 138123
or visit www.coakleyandtheaker.co.uk

*If you have instructed another agent on a sole agency basis, then the terms of those instructions should be considered to avoid a possible liability to pay two fees.



NOW IN ELMSWELL
CALL 01359 256821
Reduced fee for Elmswell Sellers*
*T's & C's and minimum fees apply



WESLEY Coffee Shop...
where you are warm and welcome

Weekdays 9.00 – 4.00, Saturdays 9.30 – 4.00



ELMSWELL FOOTPATH WALK SUNDAY 14 APRIL 2024

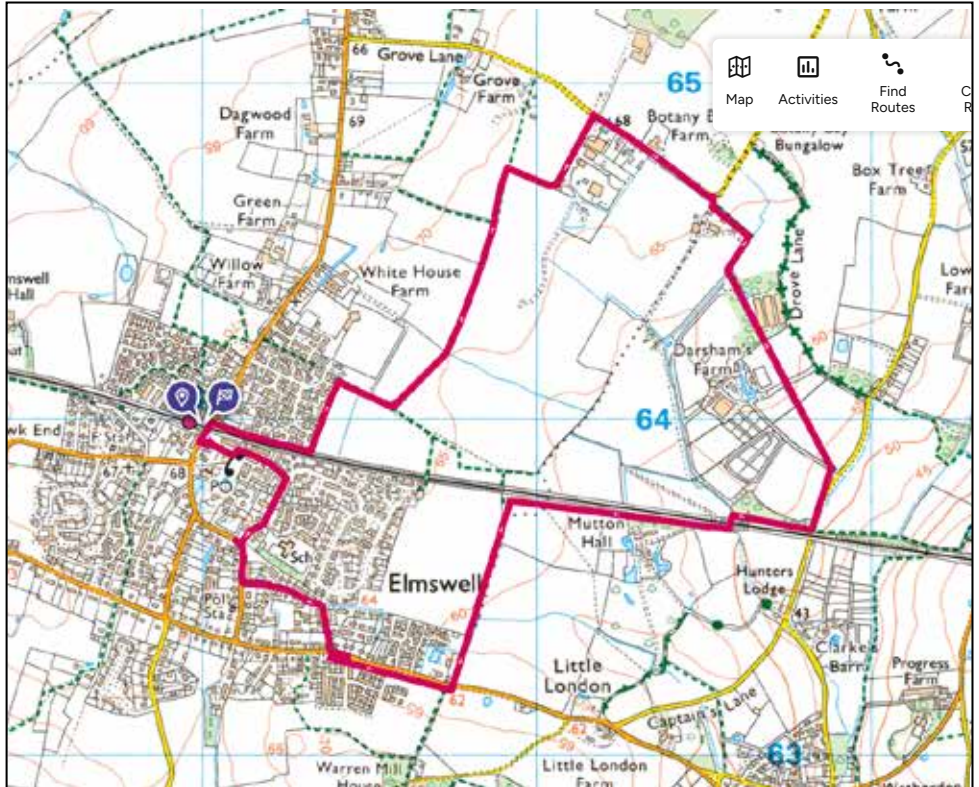
On a warm, sunny spring morning a spritely bunch of 9 parishioners, 1 dog and 1 pair of shorts met up with the promise of a fine walk around Elmswell.

On the stroke of eleven o'clock we turned right and right again along the familiar route of FP10 running parallel to the railway.

This stretch of FP10 is well trafficked but suffers badly in the winter months. The recent Mid Suffolk Council consultation with Elmswell Parishioners regarding unspent S106 funds highlighted the local support for footpath and cycling initiatives and FP10 has been identified as a possible beneficiary of this proposal.

A left following FP10 on Long Gilberts Road and a right on to FP9 had us heading into open countryside.

FP9 from Ashfield Road to Lord's Bridge via FP25 has similarly been identified as a route which might benefit from improvement as it is another well trafficked route this time heading towards the Primary School.



A left on to FP6 took us past Turners' Field on the left and the possible site for a wind turbine which also attracted good support in the MSDC consultation.

Now heading northish we crossed over the second new footbridge on FP6 which was replaced within three weeks of being identified as unsatisfactory by Suffolk County Council. Credit where it's due.

The next stretch of FP6, along with many others, has been problematic for many months due to rainfall of biblical proportions but now, due to some improvement in the weather and a drying breeze, the group progressed without loss.

A right and left on FP5 found us on Grove Lane where we struck right towards the wilds of the parish of Wetherden and FP1. The dappled light of a bright morning through the canopy of trees on the first stretch of FP1 highlighted the colour of spring and was a joy to the eye.

Right and left took us onwards south easterly and across the open horse paddocks of Darsham's Farm emerging on to Ashfield Road and turning right.

After a couple of hundred metres we turned right just before the railway bridge into Mutton Hall and another picturesque section of dappled woodland.

Under the railway arch we followed the tracks, turned left heading south, exited Mutton Hall on the Wetherden Road and turned right back into Elmswell.

It was then a simple matter of following the metalled pavements through the village back to Crown Mill.

A delightful walk of approximately 4.30 miles in 1 hour 43 minutes (an average speed of 2.5 miles per hour)

Peter Hancock, EPC Footpath Officer

MAY'S FOOTPATH WALK WILL BE SLIGHTLY OUT OF SYNC DUE TO A PREVIOUS COMMITMENT AND WILL BE ON SUNDAY 19th MAY

CITIZENS ADVICE

Citizens Advice Mid Suffolk can provide in depth advice on many issues including debt, finances, employment, benefits and family/relationships.

You can contact them by phone on 01449 676060, visit in person at Milton House, 5 Milton Road South, Stowmarket IP14 1EZ or use the contact form at midsuffolkcab.org.uk/contact-us.

Opening hours are Monday-Thursday 9.30am – 3.30pm and Friday 9.30am – 12.30pm.

**citizens
advice**

Mid Suffolk

CLUBS & SOCIETIES

HISTORY GROUP

Our April meeting welcomed back Jacquie Norman for her second talk on "Tudor Costumes" which included wonderful replica samples of the elaborate costumes made by Jacquie herself. She explained that these clothes were made from natural fibres such as wool, silk, hemp, and linen although those for the lower classes would have been made from canvas (similar to denim). Durance was a tightly-woven fabric which was fire retardant so was used for aprons. The triangular area between Bury St Edmunds, Clare and East Bergholt was famous for its production of broadcloth (a dense woven cloth historically made of wool). Its manufacture originated in Flanders but, when the French protestant Huguenots were persecuted there in the 16th and 17th centuries, they migrated to East Anglia and passed on their skills to local weavers. The strictly-observed Sumptuary Laws governed what everyone could (and could not!) wear and were based on earnings, i.e. designed to keep everyone "in their place". There was some wonderful vocabulary from this period, e.g. "farthingale" (hooped petticoat), "carbage" (cloth offcuts used to stuff a bustle, being a cushion worn by women to hold out their dress below the waist at the back: this word being the origin of the American *garbage*), "pickerdills" and "tassets" (flaps at the hip on men's jackets), "gilligaskins" (straight tubular men's trousers), "venetians" (like Bermuda shorts), "pantoffles" (oversized slippers for outside wear), and "mandilion" (a military cloak worn Colley-Weston-ward, i.e. rotated 90 degrees).



PARK GARAGE SERVICES

Units 1-2, Station Rd Industrial Estate, Station Rd, Elmswell, Bury St. Edmunds, Suffolk IP30 9HD.

ALL TYPES OF SERVICING - WELDING - MOT WORK - CLUTCHES - EXHAUSTS - SHOCKS
AIR CONDITIONING - TYRES - COMPUTER DIAGNOSTICS - BATTERIES - CAMBELTS - BRAKES



Your LOCAL GARAGE with over 20 years experience servicing and repairing all makes and models.

TEL: 01359 242479 OR VISIT: WWW.PARKGARAGESERVICES.CO.UK

The Old Tea Room Veterinary Surgery

For a professional caring service

Tel: 01359 241 761

Station Road, Elmswell,
Bury St Edmunds IP30 9HA

www.elmswellvets.co.uk



HAYWARDS SOLICITORS

FOR ALL YOUR FAMILY LEGAL NEEDS

We offer Fixed Fees at Competitive Rates

Telephone: (01449) 613631

email: enquiries@haywards-solicitors.co.uk

www.haywards-solicitors.co.uk

Free Car Park Available For Use By Clients.

7 - 9 TAVERN STREET, STOWMARKET, SUFFOLK IP14 1PJ



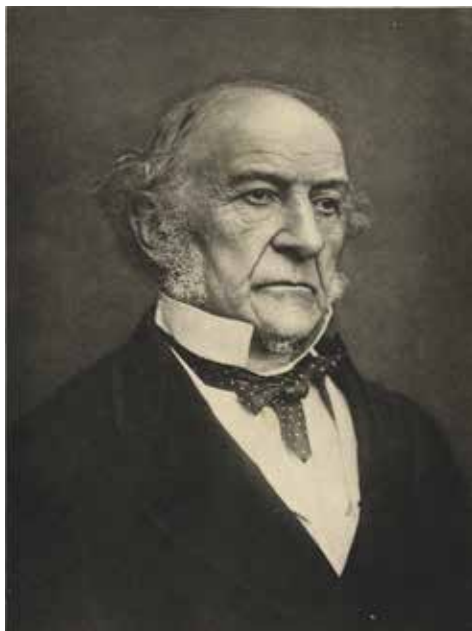
Confusingly, Tudor skirts were called petticoats! It was basically just the linen underwear which was washed: otherwise everything else was merely brushed after each occasion, while any stains were spot-cleaned with special natural lotions by very skilled and knowledgeable laundrywomen. Hooks and eyes were invented by the Tudors, and reputable ladies were laced into their garments by *straight-lacing* (not crossed lacing), hence a strait-laced lady.



When Katherine of Aragon became Henry VIII's first wife, she introduced Spanish fashions to England, including black-dyed tunics for the men (think Rowan Atkinson in the Blackadder t.v. series) which only the very wealthy could afford because black was an extremely heavy and expensive dye. This was the time just after the Spanish Armada in the 1580-90s. Apparently, the average Tudor male was 5'7" tall – no wonder Henry VIII at 6'2" made such a commanding figure!



FROM THE ARCHIVE –
London Daily News, 1890



On 17th May 1890, the leader of the Liberal Party, William Gladstone, stopped at Ipswich railway station on his way to Norwich by special train. As he sped on his way up to Ipswich, railway workers gathered by the tracks and waved clumps of bright yellow gorse at him, yellow being the Liberals' colour. In Ipswich station, he was greeted by hundreds of well-wishers. After a quick address to the crowd, Gladstone was on his way again, "the people cheering heartily until their cheers were lost in the distance". Gladstone had found favour with many working people the previous year when he had supported the London Dock Strike by contributing to the strike fund and staunchly advocating the rights of "the labouring man".

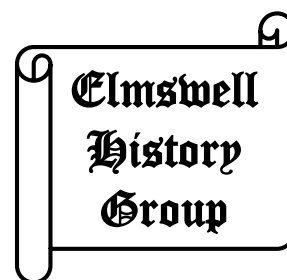


Our **Guided Tour Outing to Ely's Fenland Museum** will be on Saturday **13th July**, for which tickets will be on sale at our meetings on 9th May and 13th June (or at any time from 01359-242601) - £5.50 for members or £6.50 for non-members. From old favourite items to hidden gems not previously displayed, the Museum's galleries have recently been given a glorious facelift. Meander through their displays, marvelling at ancient craftsmanship, fantastic folk traditions and turbulent tales of riotous revolts. The galleries tell the stories of local people from the earliest prehistoric settlers to those who live here today. Surrounded

by wide skies and flat, wet fens, the people of Ely and its environs have adapted their lives, their trades and their pastimes to make the most of the unusual landscape. Find out about eel fishing, fen skating, why the rivers are higher than the roads and why the soil is known as black gold. All this in an historically interesting building of the Old Gaol, dating from 1417, in the centre of the city.



Our next meeting on **9th May, 7.30pm at the Wesley** will feature Jill & Richard Mann's talk on *Edith Cavell, East Anglia's WW1 Heroine*. A devout Christian nurse and teacher, Norfolk-born Edith (1865-1915) was the Matron of a revolutionary training clinic in Brussels when the Germans occupied the city in 1914. A year later, they executed her by firing squad. Do join us on 9th May to find out why and much more – everyone welcome.



For further information about our History Group, please visit our website –

www.elmswell-history.org.uk

or contact our Secretary, on 01359-242601



ELMSWELL GARDENING CLUB

On Tuesday 16th April we were treated to a most enjoyable evening lead by Trevor Goodfellow and Mark Brewster, both members of the local Butterfly Conservation group.

Initially the talk formed an introduction into many of the 59 species of butterflies in England. It was fascinating to see how very different males and females can appear, which certainly doesn't make identification easy. We then heard more about the 36 species of butterflies usually found in Suffolk.

There were many excellent photographs taken in nearby localities e.g. Bradfield Woods, Northfield wood, Devil's Dyke, Harleston and even Mark's garden in Onehouse. It was clear that both Trevor and Mark are real enthusiasts.

Some of the plants that are especially helpful to butterflies and moths include buddleia, verbena, knapweed, thistle, scabious, achillea and astrantia.

Some butterflies are regarded as pests in the garden, but it was suggested that a few 'sacrificial' cabbages are planted and left for the cabbage whites, while the other cabbages are carefully netted. In addition companion planting can help to deter moths and butterflies, sowing plants with a strong scent, that butterflies prefer to avoid, near to plants they might like to eat.

It was a depressing thought to learn that 80% of butterfly species have seen a decline in their population since 1976. Many of the older members were well aware of the decline and could remember plants being smothered in

a variety of butterflies in their younger days, a very rare sight in current times. However, it appears that efforts are being made to halt this decline. Anyone with a garden or even just a few planters can support butterflies and moths by planting flowers that provide shelter, nectar or food for them. There is an initiative named 'Create my wild space' which encourages everyone to do more for wildlife. It can be found online at

<https://butterfly-conservation.org/create-wild-spaces>

The talk next month by Bryan Thurlow on Tuesday 21st May is entitled 'The Perennial Mr Potter'.

Guests are always made very welcome at the club and we hope that by attending once you will be enticed into becoming a member.



For further information please contact Nick on 01359 242601 or e-mail: elmswellgadmin@btinternet.com



A Hedgehog Highway is a 5 inch gap in a fence and is essential in the battle to prevent the extinction of our endangered spiky friends. This gap allows them access to forage for food and meet mates.

Hedgehog shaped fence surrounds raise awareness to the plight of Hedgehogs, create a talking point and encourage others to take part in the project. Fence surrounds are made from recycled plastic and can themselves be recycled.

They are available free of charge to Elmswell residents while stocks last.

Simply call into the Council office at Blackbourne between 9.00am and 4.00pm on any weekday if you would like to help hedgehogs.

BJW PLUMBING & HEATING YOUR RELIABLE LOCAL PLUMBER

Boiler Servicing
Central Heating Installation
Maintenance & Repairs
Bathroom Suites, Showers, Tiling
Install Washing Machines/Dishwashers
Burst/Leaking Pipes
Water Softeners
General Plumbing Needs



200169

GAS Safe registered 200169

BARRY WARD: 01449 615339/07734 872549



CHANGE ON THE WAY

The Community Benefit Society Elmswell Community Enterprise Limited (ECE) was set up to establish the Tavern project. The Board of Management having recently decided that it was no longer the best vehicle to take the scheme forward, it is in the process of being dissolved. The process is governed by the Financial Conduct Authority who require three quarters of the 290 Shareholders to sign their agreement to winding-up the Society. We are well on the way to having the required number, at which point the Application is made and ECE ceases to be.

This leaves the Parish Council (EPC), as the owner of the site on the village's behalf, in a far better position to secure funding. It already has confirmation of the granting of £500,000 towards refurbishment and new-build along the lines discussed following wide community consultation over the past 12 months. This money has come via Mid Suffolk, levied over several years on housing developers who have created the new estates in the village. It demonstrates the District Council's faith in the Tavern project following their wide consultation exercise when the village voted it a very clear favourite.

An application now sits with the Governments for £240,000 from their Community Ownership Fund, part of the Levelling Up initiative. This bid is supported by Jo Churchill MP who was instrumental in helping the community buy the site from Greene King in 2020.

The original shareholders have supported the scheme to the tune of £188,260. This money remains intact. EPC will invite re-investment of this money in the project in return for a benefit to shareholders by way of discount on Tavern purchases once open and trading, but prompt repayment in full will be made otherwise.



Tavern following community clean-up

MANAGING THE CHANGE

For many years the village has relied upon the Blackbourne and Wesley Management Association (BWMA) to advise the parish council on the running of both Blackbourne and Wesley. Both venues have proved to be extremely successful in providing a comprehensive range of activities addressing a wide spectrum of the needs of the village, inclusively and across all ages. The BWMA comprises representatives of user groups as well as councillors plus elected and co-opted residents. Their guidance has meant that the village enjoys extensive community facilities subsidised by the 'commercial' lettings that these excellent venues attract.

It is proposed that a similar body, possibly the Elmswell Tavern Management Association (ETMA), will adopt this management model drawing on membership representing the community at large.

Several of the ex-ECE Management Board members with very appropriate hospitality, licensed trade and business skills to offer have already expressed a willingness to serve on ETMA.



Tavern family day

NEXT STEPS

There has been considerable co-operation between the Council and ECE to allow the progress that has been made. The process will not skip a beat given that the Planning permission is secured and a solid funding base established. It's the same simple methodical process that brought the Wesley project in on time and on budget: Finalise the layout and have it worked-up by the architectural technician into detailed working drawings and specifications

- Advertise for Expressions of Interest from suitable local building contractors
- Select a short-list and ask for Tenders - effectively quotes for the job
- Assess the practical funding implications that the Tenders may throw up
- Make any necessary adjustments and appoint a contractor
- Work with the contractor towards scheduling fitting-out



ELMSWELL LIBRARY

Hello Elmswell,

Hopefully you enjoyed the display made by the Girl Guides of where they enjoy reading after they came and had an evening in the library. Our current exhibition is by Marc Oliver Morphew. He has a selection of bronze castings from pieces of wood and then images drawn out of the abstract shapes. Many of the images explore double meanings. There are a series of sunset images and also a series Whirled Portraits which are abstract portraits drawing on inspiration from people's past, present and future. There are prints, cards and necklaces of the Whirled Portraits and 15% of anything sold goes to supporting Suffolk Libraries.

May's book display will be fiction inspired by or are spinoffs of film, tv, games and hobbies. For a change instead of books that have inspired movies and games, this month's display is doing it the other way round including books inspired by movies and games. It includes books from franchises like Star Wars, Star Trek, Doctor Who, Halo, Assassin's Creed, and also examples like Dick Francis and horse racing.

The metal daisy sculpture by Spadge Hopkins has now made it's way to The

Food Museum and will join 99 other metal daisies to make a larger daisy chain sculpture in the grounds of Abbott's Hall, that you can go and see until 1st September. For a minimum donation of £50, you will receive one of the metal daisies from the installation, once it's deconstructed, along with a certificate of authenticity. For a minimum donation of £150, you will receive one of the larger daisies that you can have engraved with your name or that of a loved one, along with a certificate of authenticity.

Our origami sessions that are alternate Sundays as part of our Sunday Crafts are now becoming more popular so if you are wanting to come along please arrive close to 1pm as then that will give you plenty of time to learn how to make something new. There are Sunday Crafts every week with the origami focussed ones on Sunday 12th and Sunday 26th May.

We are able to offer the range of books, activities, newspapers, computer access, in part to donations to Suffolk Libraries. If you are able to, please consider donating to Suffolk Libraries. You can donate via <https://www.suffolklibraries.co.uk/support-us>

See you in the library soon,

Miles

What's on at Library?

Story Time

1.10pm – 1.30pm every Tuesday

Sunday Crafts

1pm – 2pm every Sunday (origami 12th and 26th May)

Lego Club

Every Sunday 11am – 12noon

The Keep in Touch Community Café

10.30am on Wednesday 15th May at the Wesley Café (every 3rd Wednesday)

Opening times

Monday:	Closed
Tuesday:	10am – 1pm and 2pm – 7pm
Wednesday:	2pm – 5pm
Thursday:	10am – 1pm and 2pm – 7pm
Friday:	2pm – 5pm
Saturday:	10am – 1pm
Sunday:	10am – 3pm

www.clearfinancialservices.co.uk

Worried about Savings?

Let our team of financial advisers help you to get the most from your savings and investments.

Confused about your pension?

We would be happy to discuss the options available for your retirement planning.

Want to protect your family or income or mortgage and loan?

We are here to advise on the right solutions for your budget.

Mortgages?

For a competitive mortgage, we have advisers to assist with that purchase or remortgage.

Equity Release

We have advisers able to assist you with this area of advice.

Equity Release will reduce the value of your estate and can affect your eligibility for means tested benefits.

We make it



The Old Police House,
Cooks Road, Elmswell,
Bury St Edmunds,
Suffolk IP30 9DB.

Tel: 0345 271 3245



Approver Quilter Financial Services Limited & Quilter Mortgage Planning Limited. 12/06/2023



All types of driveways

All types of patio's
including porcelain

Shed bases

Concrete Foundations

Mini Digger Hire

Mobile: 07990 502354

Tel: 01359 250496

Find us on Facebook

GKW Groundworks

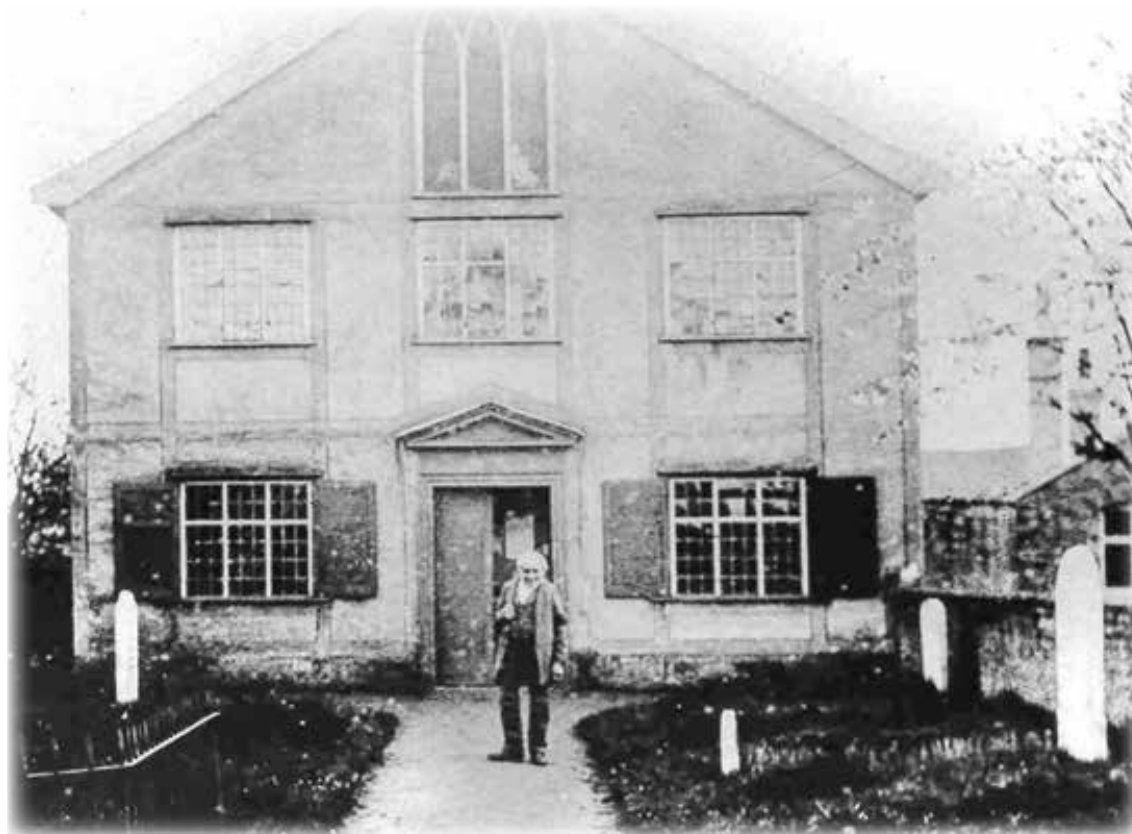


BWMA

The Blackbourne & Management Association includes many of the village user-groups of both venues and advises the Parish Council on the day-to-day running. Members have suggested that the bare walls of the Wesley Meeting Room would benefit from some decoration. They have researched 8 graphics including material from Elmswell Archive, the History Group website, the 'Elmswell – A Marker for the Millennium' book and the postcard collections of Paul Peachey and Trevor Sadler.

Two of the canvas prints are pictured here, as prepared and superbly presented by John Noy at Eastern Frame in Haughley.

The prints will be installed when all 8 are ready in a few weeks' time.



This is the first Methodist chapel on this site. It opened in 1818 to host services led by visiting preachers

from Bury. The memorials have been retained along the wall which remains between the chapel and the Tavern next door. The distinctive pub chimney is just visible to the right.

Cornelius Matthews is seen in the burial ground which fronted the building. He was born in the year the chapel was built and went on to become the effective leader of the Methodists in Elmswell. He died in 1898 after the old chapel was demolished and while its replacement was mid-way through construction. His funeral service was held in the half-finished building and it marked, for many of the congregation, the end of an era.

Woolpit brickworks used Elmswell railway station to despatch its bricks both nationwide and across the world. To cope with increased demand the original horse-drawn narrow gauge tramway was upgraded to a standard-gauge railway line to haul their famous reds & whites the 1¼ miles to the purpose-built sidings. The line partially remains and can be seen exposed just 50 yards away from here at the junction of Rose Lane and School Road. Some 200 people were employed at the height of the firm's success and our picture shows, in 1915, 2 such, custodians of the Sharp Stewart 2-4-0 tank engine, *Haro Haro*, which had seen service on Jersey Railway and in constructing the Manchester Ship Canal. The company's ran 2 other steam trains, one recorded as an 0-6-0 saddle tank engine.





ST JOHN'S CHURCH

Greetings from St John's Church

April was a lovely month at St John's as we continued to celebrate the Easter Season, which points us to the new start that God brings to all who look to him. Talking of new starts, a very happy occasion was the wedding of Grace Long and David Owen (pictured). It was a lovely service, made extra special because Grace has grown up in Elmswell and been part of the community of St John's since a child. We wish them many blessings and our prayers go with them as they embark on their married life together.

April also saw a special service, where we held our annual meetings with church warden and council elections and reflected on our mission as part of God's Church in Elmswell. We also enjoyed a Men's Breakfast on 27 April and were thrilled to host Song Circle's Spring Concert on 28 April.

May will be another packed month. Our all age gathering is on 5 May. Mission Sunday is on 12 May, when we will be welcoming a couple preparing to head off to the Far East as missionaries with OMF. We will be enjoying a *bring and share* lunch together afterwards. The following week (18 May) is Pentecost and we will be marking it in unity with other *Christians Together In Elmswell* at St John's with a light tea at 4:45pm and a *Songs of Praise* service at 5:30pm. You can find more details of our services and who we are on our web site. Our Sunday School will be involved in finding out about East Asia on 12 May, before discovering all about a great woman of faith in the Bible, called Ruth, in the latter part of the month.

St John's is always ready to welcome you as we worship the Lord Jesus and learn

what it means to follow him. We meet weekly at 10:30am and have groups for children, which include a story from the Bible and a craft. Tea and coffee are available afterwards.

Upcoming Dates:

Sun 5 May
9:00am Holy Communion

Sun 5 May
10:30am Family Service

Sun 12 May
10:30am Mission Sunday with Communion and bring & share lunch

Sun 19 May
10:30am Sunday Worship

Sun 19 May
4:45pm Light tea / Pentecost Songs of Praise Service

Sun 26 May
10:30am Sunday Worship with Holy Communion

Every Saturday:

9:00am
Weekly prayer meeting online (see web site for details)

We live stream most of the 10:30am services on our Facebook page (also available on our main web site later that day).

Rector: Peter Goodridge,
elmswellrector@gmail.com
(01359 240512)

Web site: www.stjohnselmswell.org.uk

Facebook:

www.facebook.com/stjohnselmswell

YouTube:

www.youtube.com/@stjohnselmswell



ST. JOHN'S CHURCH

TOWER

FLOODLIGHTING

30th April 2024 marked the end of the 30th year of floodlighting St. John's Tower, a year in which we raised £630, which brings the sum accumulated since we started to a magnificent £24,005. Over the years floodlighting the tower has become an integral part of village

life. As well as raising funds for St. John's, it has become a very popular way of enhancing the profile of the church itself. As "taker of the money" I would like to say, once again, a huge public THANK YOU to all those people who have sponsored the lights during 2023/24, and before. Your support is hugely appreciated. St. John's really does benefit from your generosity; and parishioners repeatedly tell me how much they enjoy seeing our beacon on the hill as they make their way home along the A14 late at night. Thank you all.

Everyone is welcome to sponsor the floodlighting of St. John's, a lovely way to commemorate a personal event, an anniversary, or any other occasion special to you. Alternatively, you can simply make a donation.

And it all helps to pay the day-to-day running expenses of our parish church. For the summer months the lights will be on between 8.00 p.m. and midnight. A night's floodlighting costs £5. Cheques payable to "ST. JOHN'S CHURCH, ELMSWELL".

Please note the deadline for inclusion in the June Newsletter is Monday 27th May.

MAY 2024 SPONSORSHIPS

- 1 in memory of John Ray.
- 2 in memory of John Ray.
- 3 in memory of John Ray.
- 4 in memory of John Ray.
- 5 in memory of John Ray.
- 5 Jane Goodchild. Remembered with love on her Birthday. Love Colin. xx.
- 6 in memory of John Ray.
- 7 in memory of John Ray.
- 7 in loving memory of Rose Emma Manning.
- 9 remembering Rachel Louise Finch on her Birthday.
- 9 in loving memory of Catherine Rafferty and May Giblin.
- 14 remembering Percy Pleasance, a dear Dad, Grandad and Great-Grandad, on his Birthday.
- 19 to remember and thank all the Elmswell Fire-Fighters who have served their village and community so well.
- 24 treasured Birthday memories Mum, of such happy times. Lots of love from All of your family. xxxx.
- 25 treasured happy memories of Ted Rookard. Lots of love from All your family. xxxx.
- 27 Duncan Jacob. Remembering a very special Husband, Dad and Grandad on his 80th Birthday. "Forever in our hearts, always in our thoughts". x.
- 28 Dean Goodchild. Remembered with love on his Birthday. Love Colin. xx.

All bookings / payments please to :-
Trevor Sadler, Abbots Warren, Church
Road, Elmswell (Tel: 240908)



CATHOLIC PARISH OF OUR LADY, STOWMARKET

Parish Priest:

Rev. Simon Leworthy,
The Presbytery, 29 Lockington Road,
Stowmarket, IP14 1BQ
Tel: 01449-612946
E-mail: pp@ourladystowmarket.org.uk

MASS TIMES:

Saturday (First Mass of Sunday) – 6pm
St Mary's C of E Church, Woolpit IP30
9QG

Sundays – 8.30am & 10.15am

Our Lady's, Stricklands Road,
Stowmarket IP14 1AW

Holy Days – 10am & 7.30pm

Our Lady's Strickland Road Stowmarket

Weekday Mass is usually 10am, see the
weekly Newsletter or the Parish Website
– www.ourladystowmarket.org.uk

All are welcome to "Coffee and Chat",
2 – 4pm on the 2nd and 4th Thursday of
the month. This is held in the Parish Hall
above the Church – a lift is available.



ELMSWELL BAPTIST CHURCH

April saw the return of our former
Minister Rev Richard Edwards and
Stephen Spurgeon who led our worship
for 18 years it was good to see them
and hear their messages to us, sadly
we as a church do not have a fulltime
minister, and rely on visiting preachers
some are ordained ministers and others
are lay preachers, we are ever grateful
for their word every Sunday. We are very
fortunate to have in our fellowship a
retired Baptist Minister Reg who helps
us out when Tony our secretary has been
unable to find a speaker for a particular
Sunday. We are a closeknit fellowship
and offer a warm and friendly welcome
to visitors and folk joining us for the first
time, why not give us a try if you're new
to the village our church is situated on
the Ashfield Road it's the Tin Tabernacle
just past Blacksmiths Way.

Our activities in May start on Wednesday
1st May at 10.30AM with a prayer
meeting at the Chapel.

9th May sees the Food and Friends Lunch
return to its usual day second Thursday
in the month at midday at the church
contact Jackie on 01359245918 if you
haven't been before and would like to join

us. The lunch is aimed at the older folk
of the village we provide a home cooked
lunch, a sweet, cheese and biscuits, tea
and coffee before and after we only ask
for a small donation to cover the cost of
the food and its preparation.

13th May Ladies Friendship group
meet at 2.00PM to hear a talk by Nicky
Thomas about the work of the Moses
Project, the group is open to all ladies
there is no charge or membership fee
just a small donation for a tea and cake
contact, Margaret on 01359241541 for
any information about the group.

Our services in May will be led by.

May 5th

Ann Rudland

May 12th

The Rev's Richard and Brenda Webb

May 19th

Carole Almond

May 19th

4.30pm Christians Together in Elmwell
Pentecost Service at St Johns

May 26th

Eddie Kerridge

June 2nd

Rev Reg Craig

Please contact Tony on 01359241541
or email cockant2@btinternet.com for
any more information
about our activities or
services

Thank you for
taking the time to
read this text

Blessings from
me Dave Hollings
and all at Elmwell
Baptist Church



WESLEY

Coffee Shop...

*where you are
warm and
welcome*

**Weekdays 9.00 – 4.00,
Saturdays 9.30 – 4.00**

Computer Help

PC, Mac, Server or Tablet support in your office or home.
A rapid response from a qualified IT professional.

- laptop and desktop repairs, speed up your system
- cyber security, cloud systems, network setup
- data recovery and virus removal
- improve wifi, smart TV, phone, tablet etc
- individual tuition

Gage Computer Services

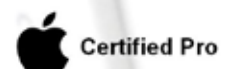
(01359) 245273

www.comphelp.co.uk

steve@comphelp.co.uk



Est. 2003



Have a great day out at

WOOLPIT STEAM

Saturday 1st June 9.00 - 17.00

Sunday 2nd June 9.00 - 17.00

At Warren Farm, Wetherden

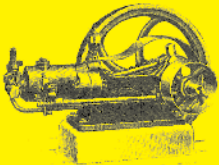
(signposted from the A14)

Featuring over a century of agricultural and vehicle development

Admission

Saturday - Adults £8, Children £2

Sunday - Adults £9, Children £2



FREE CAR PARKING

Visit our website at:
www.woolpit-steam.org.uk



EXPLORE THE BEAUTY AND CHARM OF GRANADA

Where ancient history meets vibrant culture with a flamenco show.

- 12th June 2024 departure.
- 3 nights in a 3* Centrally Located Hotel
- Return flights from Stansted to Granada
- Breakfast included
- Flamenco Show & Drink— experience the enchanting atmosphere of Sacromonte Mountain's private caves. Enjoy the best pure flamenco in a legendary Granada venue, complete with transportation to and from your hotel and a guided panoramic tour.



From £600 per person.

Contact us for more information.

Tel: 01359 242555 email: elmswell@travel-stop.co.uk
The office is open for walk-ins and appointments on Thursdays and 9am to 5:30pm for phone and email enquiries Monday to Saturday.



ABBEGATE WINDOWS

Our new business premises is now open!

Please call in for a chat about any of the following:

Windows, Doors, Conservatories, Garage Doors, Fascias, Soffits and Hardi-Planking.



Unit 3 Enterprise Park, Etna Road, Bury St Edmunds, IP33 1JZ



TEL. 01284 763244

abbegatewindows@btinternet.com

www.abbegatewindows.co.uk



THOMAS & YOUNG

WEALTH MANAGEMENT LTD

- Investment Planning
- Retirement Planning
- Estate Planning
- Business Protection
- Income Protection
- Long Term Care
- Life Assurance
- Inheritance Tax Planning

Find us at:
Risby Business Park,
Newmarket Road,
Risby, Bury Saint Edmunds
IP28 6RD

CHARTERED FINANCIAL PLANNERS



Call: 01284 334400

www.tywm.co.uk

SJP Approved 20/04/2023



NEWS FROM ELMSWILD

Don't miss our willow weaving courses!

We're very pleased to be able to welcome back Jo Hammond to lead this year's willow weaving courses. Jo is one of East Anglia's best known willow workers. She has worked as a basket-maker and willow sculptor for more than twenty years and has taught many classes and courses. Influences for Jo's craft work stem from the beauty of natural materials and her work often includes incorporating foraged stems, climbers and leaves as well as locally produced willow.

Our first course is on **Saturday 18 May, 10.00-4.00** at Lukeswood. This is a full day's course, and we will be making a Forager's Basket (see photo). Jo says:

"Weave a gently curving, elegant basket, great for picking mushrooms, herbs, or berries. This project is a great introduction to basketmaking, and can be woven with some wild twigs and climbers as well as natural willow, adding extra colour and texture."



Cost for this course is £40 per person, all materials and tools are included.

In June we have two half day courses at Lukeswood – **Saturday 15 June, 9.30-12.30 (bulrushes)** and **1.30-4.30 (wall baskets)** – see photos. Jo says:

"These lovely willow pieces are quick to make and so satisfying. Each design introduces different basketry skills, so by trying two or more you'll really learn a lot... for instance there's twisting and wrapping, corn dolly weave, randing, plaiting, borders and binding."

Cost for these courses is £25 per person, with all materials and tools included.

No previous experience is required, so if you're new to willow weaving do come and give it a try! Jo says that participants will be guided step by step, with plenty of hands-on help available.

There will be tea and coffee available all day. If you're coming to the full day course, please bring a packed lunch.

To book or get further information, just get in touch with ElmsWild.

Mary Feeney

info@elmswild.org.uk



Wesley flowers

As spring turns to summer, visitors to the Wesley will be greeted at the entrance with the sight of some lovely, colourful blooms. The parish council invited ElmsWild to come up with a plan to transform a rather forlorn, neglected patch just by the barrier. After dealing with the weeds we have planted an array of flowering perennials, designed to provide colour throughout the flowering season. Thank you to Janet, who masterminded the planting scheme and to Woolpit Nurseries who sourced and provided all the plants. As well as cheering us all up as we go into the Wesley for a cuppa, the flowers will provide much needed nectar and pollen for bees, butterflies and other pollinating insects. This is a great example of how odd, neglected corners here and there can have a complete make-over, becoming a vital feeding station for our beleaguered insects. They may be small, but if there are enough of them they can make a real difference. Any ideas of other patches that could be transformed in this way?



Memorial Garden

If you're in need of a colourful feast for the eyes this spring, look no further than our own Memorial Garden next to the library. This little oasis, looked after throughout the year by ElmsWild volunteers, is at its best in spring, with gorgeous primroses and other spring beauties. Next time you're on the way to the library pop in for a look!

P H Peckham

Plumbing & Heating Engineer

T. 01359 240958 M. 07802 642884
e. phpeckhamplumbing@gmail.com

- 24 HOUR CALL OUT
- FREE Estimates
- Corgi Registered Solid Fuel, Oil or Gas
- Bathroom Suites Designed and Installed
- Water Softeners Fitted
- Tiling
- Boilers Serviced



Wayne Salmon Electrical

For all your electrical requirements - Domestic, commercial and industrial.

All work carried out to a high standard.

Mobile 07843 302798



T.P. Services

UPV-c Window & Door Repairs

Sealed Units, Hinges, Locks, Handles, Letter Boxes

Over 30 years' experience, free quotations

Contact: Tom

Mob: 07957 098118

Email: tpservices65@gmail.com

BLOMFIELD MAINTENANCE

GAS ENGINEER

Natural and Propane (LPG)

Servicing and repairs of:
BOILERS & COOKERS

COMMERCIAL CATERING
EQUIPMENT

Installation of:
COOKERS and HOBS



LANDLORD GAS
SAFETY CHECKS

01359 241454

07889 616937



F. G. BROWN
- OPTICIANS

Denmark House,
41 Bury Street,
Stowmarket

Tel:- 01449 612812/674030

As independent opticians we offer a more personalised eyecare service that you can trust for all the family including:-

Optomap retinal examination

Colorimetry

A wide range of competitively priced frames and spectacle lenses

Contact lenses

Prescription and non-prescription sunglasses

Your sight care is our priority



LOCAL TILE AND
BATHROOM SHOWROOM

BEAUTIFUL BATHROOMS, STUNNING TILES EXPERTLY FITTED ALL AT GREAT PRICES!

OVER 20 YEARS EXPERIENCE IN THE TILE AND BATHROOM SECTOR WITH GREAT KNOWLEDGE, PROFESSIONALISM AND EXCELLENT CUSTOMER SERVICE

- SUPPLY ONLY AS WELL AS SUPPLY AND FIT
- WE ALSO SELL TILING MATERIALS SUCH AS ADHESIVE, GROUTS AND TRIMS!



CALL TODAY TO BOOK A FREE CONSULTATION OR SIMPLY POP INTO THE SHOWROOM WHERE WE WILL BE DELIGHTED TO HELP WITH YOUR REQUIREMENTS.

FOR APPOINTMENTS CALL CLARE ON 07583 964 593 OR EMAIL AT CMS.TILES@AOL.COM
WWW.CMSTILES.CO.UK

[WWW.FACEBOOK.COM/CMS.TILES.BATHROOMS](https://www.facebook.com/cms.tiles.bathrooms)

CMS TILES, UNIT 9D, CHARLES INDUSTRIAL ESTATE, STOWMARKET IP14 5AH

tcllandscapes.co.uk



The Country Life Landscapes
"Growing with you"

Supply

Decorative Stones
Soil Improver • Turf
Aggregates • Stones
Woodchips • Barks
Hardcores • Logs
Sands • Topsoils
Composts & More

BULK BAG

Garden Supplies
& Waste Collection

Tel: 01359 240094

Email: orders@tcllandscapes.co.uk

- Design
- Construction
- Maintenance

As well as a complete landscape and maintenance service, we offer garden supplies and waste collection



Collection

Green Waste
Wood • Soil
Turf • Weeds
Hardcore • Stone
Brick • Slabs
Concrete • Metal



TONY FISHER

PLUMBING & PROPERTY
MAINTENANCE

- 24hr Emergency Callout
- Bursts, leaks, blockages etc.
- Bathroom/shower installation
- Tanks/cylinders/radiators
- Tiling floors/walls
- Painting & Decorating
- General DIY jobs
- Garden Maintenance

Tel. 01359 242556

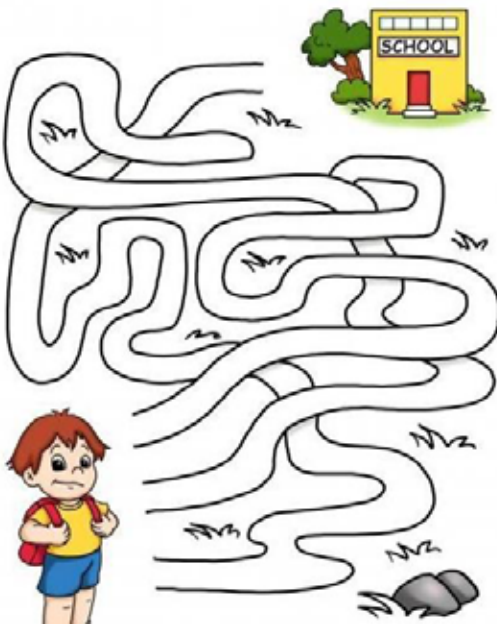
Mobile 07758327743

Reliable & Friendly Service!



Walk to School week
20th – 24th May 2024

Can you guide Max to school?



Mental Health Awareness week - 13th – 19th May 2024

Positive affirmations are empowering for people of all ages and is a great way to build self-esteem. If you're looking for ways to put positive thoughts into your little one's mind and equip them with a practical wellbeing tool that they can use for life - all while supporting their literacy skills - then positive affirmations is a wonderful practise to share with them.

Why not create a positive affirmation sun to share with your child each day?



National Biscuit day - 29th May 2024

Facial Expression biscuits



You will need:

- Packets of Digestive or Rich Tea biscuits
- 225g icing sugar with 2 tablespoons of water
- Food colouring
- Sprinkles
- Small sweets
- Cherries

Method:

1. Mix up the icing to coat the biscuit with – discuss skin/hair/eye colour with your child (you could try and replicate these if you wish)
2. Put the biscuits on wire racks and leave to dry. When the icing is dry, use the decorations to make different expressions on the biscuits.
3. Talk about expressions and features as the children work. When the biscuits are finished, enjoy eating the yummy creations to celebrate National Biscuit day!

ELMSWELL FOOTBALL CLUB



ACCREDITED
PART OF ENGLAND FOOTBALL

LMT Print
You Name It, We Print It!
For all your printing needs contact:
E: liam@lmtprint.co.uk
T: 07896 900 968
W: www.lmtprint.co.uk

S.S. KITCHEN FIT & CARPENTRY
STEPHEN SHEPHERD
KITCHEN FITTER & CARPENTER
07802681240
sskitchenfitandcarpentry@hotmail.com

ELMSWELL KEBAB
07860 255 782
Station Road, Elmswell

FIRST REPORT

Into the last few games of the season now and sitting mid-table with nothing to play for player availability has dropped off with us relying on the reserves to bolster our squad. We travelled to promotion chasing Kirton with a very depleted squad and simply didn't turn up. We couldn't keep hold of the ball nor could we pass or control a ball. Our heads dropped and we finished 6-1 losers; Jack Spampanato our goal scorer.

We then travelled to Kesgrave the other team chasing promotion with, yet again, another small squad. We battled well and came into half time 0-0 with positives to take. Kesgrave had a full bench and our fitness levels dropped off as they brought on fresh legs which made the difference with the scoreline finishing 4-0 to Kesgrave. Our last game is at home to Coplestonians Reserves at the Blackbourne on the Saturday of the Bank Holiday weekend. We hope to have the bar open so come along and enjoy the sunshine and cheer on the lads one last time this season.

L.Trickey, First Team Manager

SECRETARY'S REPORT

FIRST TEAM MANAGER/S - We have had a couple of people show interest in the vacant First Team Managers role but we're still open to applications. It could be an individual or a small group to share the responsibilities...

SPONSORS - anyone interested in advertising on this page or sponsoring some new kit, balls, tracksuits etc

CLUB SUPPORT - Anyone interested in helping out with any admin roles or getting involved on match days, get in touch for more details.

For all the above you can contact us on our socials or email club secretary at edddd101@gmail.com.



The Elmswell Fish & Chip Shop

Great British

FISH & CHIPS

KEBABS COMING SOON!

01359 244672

ELMSWELL FC HOME GAMES

04/05 - 2:30pm Elmswell v Coplestonians Res

LAST GAME OF THE SEASON

HOPEFULLY GET THE BAR OPEN

AT THE BLACKBOURNE COMMUNITY CENTRE

CARPET CLEANING

BOOK NOW

UPHOLSTERY CLEANING





RESERVES REPORT

Hadleigh came to The Blackbourne looking for revenge after we beat them with two goals in injury at their place. And they got it as we suffered so many injuries that we finished the game with 10 players, several of whom were injured themselves. Final Score 6-1. MOTM Ed Edmonds with a rare 90mins at RB.

Redgrave Rangers are top three and beat us at home so we were expecting a tough one. We had a couple of first teamers which certainly helped and a good all round performance saw us turn them over. A brace from MOTM Malin Davies and one from Romaine Scott saw us win 1-3.

Another big win for the Reserves. 3-1 against local rivals, Mendlesham. Another two goals from Malin and one from Yaya. That win takes us up to 7th. Ourselves and the teams around us all play tops sides in their last games so little change is expected, but who knows.

Up the Elm



ELMSWELL FC RESERVES' SPONSOR

ServiceMASTER Clean

Upholstery

Carpets & Rugs

Amtico+Karndean

t.01359 241577 m.07398251908



PARK GARAGE SERVICES

your local garage

ALL MAKES & MODELS

SERVICE & REPAIRS

01359 242 479



0% LANDFILL

CULFORD WASTE LTD Family Run Est. 1989

SKIP HIRE
2 to 12 yard skips for hire. 15-40 yard roll on roll off skips for hire.

BAG HIRE
An excellent alternative to hiring a skip when either space is restricted or a skip is simply just too big.

AGGREGATES
Recycling such materials after crushing and screening allows Culford Waste to provide a substantial range of aggregates. Aggregates can be delivered bagged or loose.

GRAB LORRY
Our grab lorries are eight wheel based with payloads of 17 tonnes, and can grab all types of waste.

SCRAP METAL COLLECTION SERVICE AVAILABLE
Please call for details

01284 728950
ORDERS@CULFORDWASTE.CO.UK
Office Hours:
Monday - Friday: 8am - 5pm
Saturday & Sunday: Closed

ARGICULTURAL
Where burning or burying waste is no longer an option for farmers, Culford Waste provides a disposal facility for farmers.





TBS HIRE

Available to Hire from a Modern Fleet:

- Diggers & Dumpers
- Access Equipment
- Portable Site Toilets
- Landscaping & Garden Machinery
- Concreting Equipment
- Power Tools



Plant & tool servicing and repair also undertaken.

Thurston Rd, Great Barton, Bury St Edmunds, Suffolk, IP31 2PJ

T: 01284 788122 E: info@tbs-hire.co.uk

www.tbs-hire.co.uk



FENCING, GARDENING & PATIOS

All fencing supplied and erected
All garden work...regular maintenance or one-off

- Grass cutting up to 3½ acres
- Garden Clearance
- Tree Felling • Stump Grinding
- Concrete bases laid • Sheds erected
- Turf Laying • Artificial Turf
- Driveways • Pressure Washing
- Garden machines serviced and repaired

No obligation quotes

Contact Andy

01449 403050 077487 85197

wade.andrew63@gmail.com

CLARKES

OF WALSHAM LIMITED

✓ TIMBER & BUILDING SUPPLIES ✓ GARDEN & FENCING ✓ COUNTRY STORES



**FREE
DELIVERY
FOR ORDERS OVER
£100**

SERVING TRADE AND PUBLIC SINCE 1908



www.clarkesofwalsham.co.uk | 01359 259 259

The Street, Walsham-le-Willows, Bury St Edmunds, Suffolk, IP31 3BA



WESLEY UKULELE BAND

This month has been rather special for the Ukes. Firstly, on 11th, we had a visitor at our Thursday practice in the person of Norma Howell. She came to talk to us about the Medical Protection Dogs, which is our current charity. She explained how the dogs, of all different breeds and sizes, were trained to sniff out cancers and severe allergies. We were pleased to present her with a cheque for £500 to aid the research and training.

Our gig on 13th was, we thought, for Old Newton Football Club. It turned out to be a fundraiser for young Otis Harvey, who at only three years of age is suffering from a genetic disease, which restricts his development and makes him very dependant on his parents and carers. The family were hoping to raise money for an off-road wheelchair to enable them to take him on new adventures. We were moved to present them with a cheque for £200 towards their cause.

Our pictures below show Norma, from Medical Detection Dogs with the group, and the presentation of a cheque to the Harveys, for Otis.



A gig at the Salvation Army in Stowmarket for their Over 60's Club was very rewarding as they gave us £65 for our charity fund.

A small number of us were priviledged to be invited to the Blackbourne to celebrate the life and music of our dear supporter, Paddy Butcher. Following some of Paddy's friends and fellow folk artists was daunting, but we rose to the challenge and were well received.

Finally, a reminder to make a note in you diaries for 29th June, when we will be hosting 'June in Tune' at the Blackbourne. A free event of music, comedy, crafts, food and drink.

'Till next time.....

**For information, please call Kevin on 07710 149040 or Carol
Or email: Kevin.Knock99@gmail.com**

PARISH OF ELSWELL

THE ANNUAL PARISH MEETING

A formal chance to raise issues and ask questions of public concern will be held at WESLEY on Wednesday 15th May beginning at 7.30

All electors are invited.

Also invited are the Ward Members of Suffolk County Council and of Babergh & Mid Suffolk District Council, Elmswell Parish Councillors, village organisations represented on the Blackbourne & Wesley Management Association together with Suffolk Police.

**Written questions are also invited in advance through
The Parish Council Office at Blackbourne IP30 9UH
email: clerk@elmswell.suffolk.gov.uk**

KEEPING YOUR COOL WITH A PLEATED ROOF BLIND



As the warm weather is slowly approaching (hopefully) it is time to start considering pleated roof blinds for your conservatory or skylights.

Spend your summer in a cool space instead of working up a sweat! These are the perfect solution. It's also a great way to protect your furnishings from the bright sunlight.

If you're questioning how, you will open and close these blinds, worry no more as we offer a motorised option for your ease.

Pleated blinds are also great for winter, as they help to keep the warmth in during those colder months as well as keeping the warmth out during the summer.

Give us a call or pop into one of our showrooms to discuss your window dressing needs...

We are located on...

79 Northgate Street
Bury St Edmunds
IP33 1JD

2-4 Old Station Road
Newmarket
CB8 8DN

One of our sales advisors will be on hand to help with any question or queries.



www.hartwellblinds.com

Bury St Edmunds: **01284 753310**

Newmarket: **01638 665656**

Cambridge: **01223 297177**

e: info@hartwellblinds.com





Tree for Life:

Mid Suffolk is welcoming applications to the Tree for Life scheme for 2024. As always, it is open to all local families who have, or will be, welcoming a newborn or a newly adopted child. The scheme is also open to parents who may have recently lost a child. Expert advice is available as needed, to help you pick and care for your tree and decide where best in your garden or across the district to plant it. As well as celebrating each new life, the scheme also contributes to local tree coverage for the generations to come.

You can register for your child's tree before or after their arrival, but you must apply before applications close on 10 January 2025. More details are available on the Mid Suffolk website <https://www.midsuffolk.gov.uk> – search for 'tree for life 2024.'

Solar farms in Mid Suffolk:

A 200MW solar farm across a 750-acre site near Mendlesham has recently been proposed. It is a nationally significant energy application which will be determined by the national Planning Inspectorate. MSDC is just a consultee but has requested more clarity about certain aspects of the application before submitting feedback. The council's goal with regards to solar farms is to find the right balance between delivering renewable energy, food production, and protecting the countryside. The administration encourages residents, businesses and communities to engage with any solar farm consultations in their area to ensure that the voices of local people are heard.



Community Infrastructure Levy (CIL):

CIL is levied by Mid Suffolk District Council on most new areas of development, with a view to helping the delivery of adequate infrastructure in that area. Full council recently recommended approval to some changes to the levy's expenditure framework, so that it now allows applications from sports clubs, community shops and cafes, with provisos to ensure that any profit made by such businesses goes back into the community.

Homelessness:

Full Council have adopted a new Homelessness and Rough Sleeping strategy for 2024, and an associated delivery plan. Together with Babergh, the

Mid Suffolk administration wants to go beyond the minimum required provision and hopes to provide a bespoke person-centred and proactive service.

Highways concerns:

Reminder that highways issues should be reported to Suffolk County Council by using the highways 'reporting tool' at <https://highwaysreporting.suffolk.gov.uk/>. It helps to include photographic evidence if available.

Monthly drop-ins:

These are continuing through 2024, and alternate between the Wesley Café in Elmswell, and Teacups in Woolpit. The next dates are:

Tuesday 21st May 10-12 at The Wesley
Thursday 20th June 10-12 at Teacups Café



District Councillors for Elmswell and Woolpit:

Councillor Sarah Mansel	07860 829517	sarah.mansel@midsuffolk.gov.uk
Councillor Jen Overett	07928 512591	jen.overett@midsuffolk.gov.uk



LOOPEE LOO TOILET HIRE LTD

SERVICING THE BURY ST. EDMUNDS AREA

We will deliver and collect to your required location, on a short or long term hire, furthermore ensuring they are maintained and cleaned regularly with amenities replenished including toilet roll and hand sanitiser.

For more information please contact us:
Telephone: 01359 270100
Email: info@loopeeloo.co.uk

Unit 15 Woodlands Business Park, Rougham Industrial Estate, Bury St Edmunds, Suffolk, IP30 9ND

TOILET HIRE
Company Ltd

01359 270100



Made to Measure

Curtains, Cushions & Roman Blinds

Fabric Samples Available

Over 35 Years' Experience

Free Measuring Service Available

Call Dena on
07842110240 for a free quote

WE LOVE
SELLING HOUSES
ALL YEAR ROUND



SPRING



SUMMER



AUTUMN



WINTER

When you sell your home, you're looking for an estate agent which fits your needs. Here at allhomes we offer you innovative marketing techniques, no matter the time of year we have you covered.

allhomes.uk.com

01359 234444
mail@allhomes.uk.com

Book a FREE property valuation with us today



KARATE CLASSES

THE BLACKBOURNE, ELMSWELL



BOOK A FREE TRIAL CLASS

f ELMSWELL KARATE @ 07752 328024

Arboricultural & Landscaping Solutions

- All Aspects of Tree Surgery
- Soft & Hard Landscapping
- Maintenance & Lawn Care
- Fencing
- Domestic & Commercial
- Fully Insured
- NPTC Qualified



For more information please visit:
www.greenscenetreesurgery.co.uk

GREEN SCENE

PLEASE CONTACT US TODAY FOR FREE QUOTATIONS & ADVICE

Phone: 01359 298141 Mobile: 07866 866 880

Email: greenscene@hotmail.co.uk



Trevor Sadler receiving his richly deserved prize from Rob Dann



Some of the Foxes competing in the 'Spider'



FOX BOWLS CLUB

We had a successful opening of the green on April 13 with a good turnout of members and a three of the five new members we have gained this year of which several look quite promising. Jenny Murray took the newbies for some basic training as several are trying the game for the very first time, whilst the rest played a couple of matches between themselves. There was a Spider, nearest the centrally-placed jack for a bottle of booze which was won by the reputedly famously lucky Trevor Sadler, this time using pure skill! As everyone stands with one foot in the gutter and bowls at the same time,

the chance of one wood reaching the cot (jack) unimpeded is pretty remote. Trevor's was clearly blessed by the Gods as it sailed straight to the centre. The league season has started and Mondays kicked off with a match between our two teams. Neil Smart's side won the encounter winning one rink by a greater margin than they lost the other and netting 4 points from a possible 5 in the process. It was a good-spirited game despite the cold and damp conditions and many players commented that yearned for the warmer weather. Officially, Fox 1 was at home and Fox 2, Neil's victorious side, was

playing away but, as both were 'at home' we all piled into one changing room, because that is what we have always done. The first time an away match has been played at home!

Kevin Knock, one of our members, is organising a free concert, June in Tune, on Saturday 29th June and the Bowls Club will run a target competition among the other stalls and attractions and we would be pleased to see you there.

Peter Edmonds, E.F.B.C.
07860 395720
edmondspeterj@gmail.com

ELMSWELL CRICKET CLUB

Elmswell Cricket Club is appealing for new players for the coming season.

The last few seasons have seen us struggle to field a full team for every match and, unfortunately, if this continues then the Club will be unable to carry on.

At the AGM it was decided to carry on for another season with the same Committee in place but some new faces are needed desperately to take the Club forward and, crucially, new players of all abilities are required.

Elmswell Cricket Club is a friendly, not too intense side with a desire to win but, at the same time, promote a good team spirit. So if you are looking for a way to embrace village life this is the perfect way to do so.

The Club has been in existence for 49 years and it would be wonderful to reach 50 years, not least to honour all the characters past and present who are mentioned on our Honours Board.

If you are a member of another cricket club but never get a game then why not give us a try.

If you would like to become part of the team please contact Club Captain, Ben Whatling; Tel.: 07760174811; e-mail: bwhatling@seamans.co.uk.

Be sure you will be warmly welcomed!



Recycle your DISPOSABLE VAPES AT Sainsbury's TESCO ASDA co op Suffolk Recycling Centres

SCAN ME

Suffolk recycles

W
E
L
D
I
N
G
•
T
Y
R
E
S
•
B
R
A
K
E
S

E
X
H
A
U
S
T
S
•
D
I
A
G
N
O
S
T
I
C
S



MOT Centre LTD



MOT CLASSES 4 & 7



- CLUTCHES
- BATTERIES
- CAMBELTS/TIMING CHAIN
- SERVICING
- TRACKING
- WHEEL BALANCING

Mkautosmotcentreltd@gmail.com



MOT: 01359 241158/244421

REPAIRS: 01359 245998



The Workshop
Grove Lane
Elmswell
IP30 9HN

Please note as of February
2023 D A Bevan has been
taken over by MK Autos



**Find us on
Facebook.**

Langleys Conservatories & Windows

Your local family run business established in 1987



Telephone 01284 760345

Visit: www.langleysconservatories.co.uk Email: enquiries@langleysconservatories.co.uk

The best in energy efficient doors and windows!

Improve the insulation values and beauty of your home with the company you can rely on.

Feeling the chill this winter? heating bills getting more and more alarming? Then maybe its time to invest in new energy efficient double or triple glazing from the local company trading since 1986 in Bury St Edmunds. We don't do gimmicks or engineered discounts, we just offer great value for money with a first class service, premium products and guarantees to back it all up. Give us a call to arrange a free quotation on 01284 760345. Don't forget to check out www.Langleysconservatories.co.uk to see all of the home improvement services we offer.



Call today on 01284 760345 or email enquiries@langleysconservatories.co.uk





The Parish Council meets at least once each month, excluding August, although extraordinary meetings can be called as required at any time. The April meeting with all 11 councillors present, together with County Council Ward Member Andy Mellen, District Councillor Ward Member Jen Overett, 3 members of the public, and the Parish Clerk, Peter Dow, took place at Blackbourne on Monday 15th.

This report is compiled from that meeting by the Parish Clerk and edited by the Council's Editorial Board which comprises the Council Chairman, the Council Vice-chairman and Cllr Sue Roots, elected by her peers to join them. It seeks to cover some of the more interesting or significant items thought to deserve wider public attention. Included, where appropriate, are matters reported to the meeting by external bodies such as the County and District Council Ward Members or as raised at the meeting by members of the public. Further background and reference to subsequent events are included where relevant.

The Minutes of recent Parish Council meetings and Committee meetings, together with the agenda for the next meeting, when ratified, are available online at elmswell.suffolk.cloud and from the Parish Clerk by arrangement. Bound copies of older Minutes are lodged in the Village Archive at Blackbourne and with the Suffolk County Records Office in Bury St. Edmunds. The most recent Minutes from the 18th March meeting, as approved at this meeting, are posted in the Council's notice board at Crown Mill.

Mid Suffolk District Council

Cllr Sarah Mansel added to the written report submitted for publication in the April Newsletter confirmation that the April meeting of MSDC could not be held in light of an agenda which included matters relating to Stowmarket where the forthcoming by-election requires a purdah on any council activity which might affect the independence of the election process.

Suffolk County Council

Cllr Andy Mellen tabled a written report which included the following:

NSIP's

At Council on 21 March, the council debated the impact of the various Nationally Significant Infrastructure Projects (NSIP's) planned for the county and voted that its strategic vision for the county would be to prioritise offshore rather than onshore coordination of schemes, undergrounding of cables rather than pylons, and protection of best quality agricultural land from solar development. NSIP energy projects are approved by the Secretary of State rather than local councils, which only act as statutory consultees. Councils can and do formally object or support proposed projects in the region, however, as East Suffolk have done with the recent Sea Link proposals affecting Friston and the nearby coast.

Libraries Consultation

On Tuesday 25 March, Cabinet reviewed the results of the recent consultation about the Suffolk library service, which is due to go out to procurement in the summer. Broadly, the members of the public who responded to the survey agreed with what libraries currently provided, including community and digital services, and the mobile library and home library services for people who were housebound. Recent pop-up libraries in village halls did not score highly in the consultation and it is unlikely these will form part of the service in future. It is also likely that mobile libraries will run from smaller vehicles in future. The successful bidder for the new libraries contract is likely to be announced in November, with the new contract starting from June 2025.

New Suffolk Business Board

At Cabinet on 25 March the future of the New Anglia Local Enterprise Partnership (NALEP) was discussed. Since 2012, government funding for economic growth in the county has been awarded via the New Anglia LEP, but the government has recently directed that LEP's should be integrated into county councils. The New Anglia LEP was established by SCC and Norfolk County Council jointly, but it will be divided between the two. Suffolk County Council will be establishing a new Business Board made up of local business owners, representatives from councils and other organizations to take over LEP functions such as deciding how future government funding for growth should be used, to undertake mentoring of small businesses and building skills in the workforce. The council has been advertising for local business owners interested to be part of the new Board in the last few months, and the transition from the LEP to the new arrangements is due to complete in August 2024.

Growing Biodiversity

At Cabinet at the end of February we heard about the council's new responsibilities for Planning and Biodiversity Net Gain (BNG). Under the Environment Act 2021, all planning permissions granted in England will have to deliver at least 10% biodiversity net gain from April 2024. This means that developers must protect natural habitats or compensate for the loss of it when they build – for example, if a woodland is destroyed by a road, they need to create another one, either onsite or elsewhere, or enhance the natural habitat onsite so that the effect of the development is to increase nature rather than decrease it. This has been introduced to try and combat the biodiversity crisis in the UK; since 1970 UK wildlife species have declined by 19% on average, with nearly one in six species threatened with extinction. More information about the new scheme, is found at <https://www.gov.uk/guidance/understanding-biodiversity-net-gain>

Update on Special Education Needs and Disability (SEND) Investment

Cabinet recently reviewed the new £4.4m investment in SEND services at the council will be spent on, particularly around clearing the backlog of EHCPs and annual reviews. Since the poor SEND inspection report was published, the council has worked with health to create a priority action plan which was submitted to Ofsted/CQC on 7 March. This plan addresses two priority actions from the report and three areas for improvement.

There has also been a recent announcement that Suffolk County Council is set to receive an additional £10.9 million to create new specialist school places for children and young people with special educational needs and disabilities in the county. The priority action plan is available at; <https://www.suffolklocaloffer.org.uk/asset-library/suffolk-priority-action-and-improvement-plan-final.pdf>

Water Management in Suffolk

At Scrutiny Committee we heard how despite the wet winter this year, East Anglia is considered a Serious Water Stressed Area by the Environment Agency. By 2050, the demand will be 2538Ml/d (mega litres per day) but the amount available will be only 1700Ml/d. This will affect water bill prices - and limit economic growth in the region, because, although housing developments are always guaranteed a water supply, this is not the case for commercial/ industrial developments. The report included plans to preserve water or generate new supplies, including reducing water company leaks, two new reservoirs in South Lincolnshire and the Cambridgeshire fens, plus a small new reservoir in North Suffolk, and an increase in water transferred around the region. Councillors were very concerned about the likelihood of water becoming scarce in the county in the near future, especially as the public seemed unaware. They talked about how the profile of this issue could be raised to prevent people using too much water. It was noted that Essex and Suffolk Water had already declared a moratorium for new industrial/ commercial connections to the supply in the Hartismere area of Mid Suffolk.

Public Consultation on Suffolk Devolution

Following an extensive informal engagement period throughout January, February and early March, Suffolk County Council's formal consultation for the proposed Suffolk Devolution Deal was launched on 18 March. The consultation and associated materials have been informed by feedback received during the engagement sessions the council held with staff, local businesses, Voluntary, Community and Social Enterprise (VCSE) organizations, county, district and borough and town and parish councillors. The public consultation will run for 10 weeks (closing on 26 May) and has been designed with the help of advice from the Consultation Institute. Once the consultation has completed, the analysed results will be presented in detail to Cabinet in summer 2024. Further details are at: <https://www.suffolk.gov.uk/council-and-democracy/devolution>

Consultation on Suffolk's next Local Transport Plan (LTP)

Another Suffolk County Council consultation which has recently been launched is for the next version of the Suffolk Local Transport Plan. The LTP sets out a long-term vision for transport in Suffolk and covers key themes such as decarbonisation of transport, strengthening the local economy, promoting health, wellbeing and social inclusion, and creating better-connected places that encourage a range of transport choices. Many people's travel habits have changed over the past few years, and particularly since the Covid pandemic, so it is an excellent time to refresh the plan. Public feedback will help Suffolk County Council to draft something new, which will be subject to further consultation later in the year. The consultation survey is at: <https://www.suffolk.gov.uk/ltp4>

New EV Funding

Suffolk County Council has been awarded a £7.3m investment for Electric Vehicle (EV) infrastructure following successful bids to the government's Local Electric Vehicle Infrastructure (LEVI) fund, which supports local authorities to plan and deliver charging infrastructure for residents who do not have off-street parking. Suffolk residents without off-street parking will benefit from £5.9 million to support EV charging, and a further £1.4 million will be used to develop the county's existing EV charging network in community locations. Suffolk residents are invited to 'nominate' their street for consideration for on-street charging points with this online form: <https://www.smartsurvey.co.uk/s/requestchargepoint/>

Clerk's Report

The Parish Clerk's Report to the Meeting included the following:

1 Regarding the aspiration for community affordable homes on the Tavern site, I have approached a second specialist Solicitors' practice as recommended by the National Community Land Trust Network of which Council is a member. Their quote was not competitive, however, in discussing the matter, they did proffer the following, which I think is instructive, based on our broad enquiry: *...these are actually really difficult questions, and in many cases there might not be a clear-cut answer. The question of how to ensure perpetual affordability (e.g. avoiding the Right to Buy/Right To Acquire) is something which we have spent countless hours over and unfortunately there are few cast-iron guarantees of the kind I suspect you're looking for.*

2 The Food Bank is now operating from the Baptist Chapel on Ashfield Road. I have made it clear that the bowls pavilion remains an option over the winter months should an alternative be necessary.

3 The SCC Transport Planning Manager has been in touch to provide an update on progress towards the Elmswell/Woolpit pedestrian & cycle link. Cllr Mellen has queried the validity of some elements of the reasoning which lead to a conclusion that unavoidable delays including weather problems and the change in SCC's highways contractor have jeopardised the chance to apply for CIL funding until the Autumn bidding opens. The full answer to some of these questions and the chance of remediation towards progress on the ground will be the subject of a proposed meeting.

4 Along with Cllrs Hancock and Mansel and the MSDC Sustainable Transport Officer I met on 21st March with the SCC Area RoW Manager who is keen to help towards improving pedestrian / cycle access up Ashfield Road to Grove Lane, as per feedback from the MSDC Consultation. This will include our link with the Matthew Homes estate along with the proposals for development at Oak Lane and the rationalisation of paths through Turners' Field. We walked the various paths and discussed options for creation / diversion as well as noting various problems en route. Meanwhile, I have arranged a further meeting between SCC and the ElmsWild volunteers towards discussing the possibility of a footpath link between Kiln Meadow and Lukeswood.

5 I have had various on-line meetings regarding the sustainable transport initiatives in which EPC is engaged – the existing taxi-bus service and how it might be developed plus

looking forward to the possibility of a DRT (Demand Responsive Transport) service using our own electric vehicle and an Uber-style App. Thurston PC are keen to consider a partnership on the latter. I have called a meeting of the 4 villages involved in the current (and ever-more successful) service towards discussing the way forward – possibly by the provision of a Thursday run to Stowmarket in the first instance. Grant aid is secured for this.

6 There has been discussion at BWMA meetings for some time regarding the difficulties in finding volunteer officers to keep some of the village organisations running. It has been suggested that the parish council might be able to offer paid-for 'secretariat' services, mainly bookkeeping, to encourage the continuation of our clubs and societies. One such is the Amenities Association which has the extra administrative burden of Newsletter advertising, subject to annual examination by the Charities Commission. The loss of key members leaves the Association at risk of not being in a position to address this, hence the Proposal at Agenda item 13. The income would cover costs and here is scope for staff to take on the work. Any approaches from other organisations would be taken on a case-by-case basis and it would seem to be a way to help maintain the diversity and range of our village community.

7 Nationally Significant Infrastructure Projects (NSIP's) are major infrastructure projects of national importance, and the majority of Suffolk's NSIP's are associated with the generation or transmission of electricity. The decision to allow an NSIP to proceed is made by the relevant Secretary of State, not councils, although the county council is a statutory consultee for many projects. There are a high number of projects in Suffolk currently, with more in the pipeline:

- Drax – a gas power plant on the former Eye Airfield
- East Anglia Three offshore windfarm is under construction
- Two new offshore windfarms, East Anglia One North and East Anglia Two, were approved by the Secretary of State in March 2022
- EDF began construction of Sizewell C nuclear power station in January 2024
- National Grid are proposing grid reinforcement works from Bramford to Twinstead, with a decision expected later this year
- National Grid's Norwich to Tilbury stretch of the 'Great Grid Upgrade' programme, a controversial pylon route proposed for construction



- through the middle of the county
- SeaLink proposals for an undersea cabling route between Suffolk and Kent is due to see significant onshore infrastructure at Friston, near Aldeburgh
- LionLink (previously known as EuroLink) proposes undersea cabling to link the UK with the Netherlands, with landfall proposed either above or below the Blyth estuary
- Sunnica Solar Farm, a 2,500 acre proposed solar development for Cambridgeshire and West Suffolk, has still not been approved by the government, with a decision due in April
- Meanwhile, A new 750 acre solar farm, White Elm, has been proposed for Mendlesham in Mid Suffolk, with consultation due to begin in the autumn. Most immediately, the Norwich-Tilbury pylons proposals are locally controversial and a statutory 10 week consultation is imminent with BMSDC seeking to co-ordinate local response towards a District-wide view.

8 We have official confirmation of the £500,000.00 s106 funded grant to the Elmwell Tavern project. The application for £200,000.00 in capital funding and £40,000.00 in first-year revenue funding are now in for consideration in the 4th tranche of the Government's Community Ownership Fund.

Planning results

The Meeting noted the results of Planning applications made to Mid Suffolk, the Planning Authority, being:
 DC/22/03968 Discharge of Conditions re Land west of former Bacon Factory REFUSED
 EPC no comment
 DC/24/01149 Tree works at Blackbird Cottage, St Johns Close GRANTED
 EPC supported with conditions
 DC/24/01353 Discharge Condition 10 re Biodiversity...Land adjacent Kiln Lane (petrol filling station)
 DC/24/00609 Extension at 7 Wetherden Road GRANTED
 EPC supported

Planning Applications

The Meeting supported Applications

forwarded for comment by MSDC, the Planning Authority for extensions at 16, Cooks Road, at 75 Eastern Way and at South View in Spong Lane. Applications for tree works at The Grange and at St John's House, Church Road were referred back to the District Tree Officer for professional evaluation and decision.

Applications for new dwellings at Royston Farm in Kiln Lane and at Kiln Lane Guest House were considered and the same response determined in either case, being:

Elmwell Parish Council has consistently objected to residential development at Kiln Lane which is outside of the village development boundary. It is a narrow, single-track country lane with no passing places. It serves 2 industrial sites together with some 20 dwellings and has recently suffered inappropriate development when the District's lack of a 5 year housing supply left it undefended from ad hoc residential permissions.

This application is tested against a robust 10 year housing supply together with the BMSDC Joint Local Plan and the Elmwell Neighbourhood Development Plan, both adopted in November 2023.

There is no dispute that the site is in the countryside. The distance to the nearest facilities at Elmwell is a mile. There is no safe pedestrian route into either Elmwell or Woolpit. The site is unsustainable.

The Planning Inspector who visited a similar site at Dagwood Farm to the north of the Elmwell development envelope on 2nd April 2024 dismissed an appeal for exactly such a proposal on the grounds of: '...the failure of the proposal to be consistent with the Council's spatial strategy and be in a suitable location for housing having regard to the accessibility of the site to services and facilities...the proposal would not accord with the development plan' (Ref APP/W3520/W/23/3322793).

This application deserves the same assessment. The house is not needed. There are no mitigating factors to counter the unequivocal case that the proposal is outside Policy. Elmwell Parish Council urges refusal.

Devolution

The Meeting agreed that, in response to the invitation to comment on the proposed Suffolk Devolution Deal, it should be confirmed that Elmwell Parish Council does not support the idea which is better suited to urban authorities, offers relatively little financial incentive and poses the possibility of a directly elected Leader, a mayor in all but name, being politically opposed to the majority of the council membership. There was a view that Suffolk County Council might better concentrate on the failing services within its current jurisdiction rather than embarking on a distracting and unrewarding structural reorganisation.

Affordable Housing

It was agreed that specialist legal advice be sought from Anthony Collins, Solicitors, for a fee not to exceed £3,500.00 net towards a scoping report on the options available to Elmwell in seeking to provide affordable community homes on the Tavern site.

Play area at Crown Mill

It was confirmed that, as previously reported, options are to be considered towards fulfilling one of the stated community preferences in the recent Mid Suffolk consultation for improvement to play areas in the village. Outline schemes have been commissioned from 3 major providers for the refurbishment of and possible extension to facilities at Crown Mill. Once these are received, further consultation will take place.

Next meeting

It was noted that the next meeting would be the Annual Meeting scheduled for 20th May beginning at the earlier than usual time of 7.00pm at Blackbourne. The public are, as ever, welcome to attend all Council meetings and the agendas will always offer opportunities for questions and comment. Agendas are published online at elmwell.suffolk.cloud and on the Council's notice board at Crown Mill and hard copies can be collected from the Council Office at Blackbourne.



Enquiries on any Parish Council matter are invited to the Clerk, Peter Dow, at The Council Office, Blackbourne, Blackbourne Road, IP30 9UH – right next to the car park and with wheelchair access.

Staffed Monday – Friday 9.00am – 4.00pm and other times by arrangement

clerk@elmwell.suffolk.gov.uk
 Tel. 244134 www.elmwell.suffolk.cloud



Future Council Meetings

Notice of all meetings and agendas is posted on the Council's notice board at Crown Mill and in the community notice board at the Co-op.

May 20th	June 17th	July 15th	Sept 16th	Oct 21st
----------	-----------	-----------	-----------	----------

Meetings are held at Blackbourne, beginning at 7.30 unless otherwise notified

VILLAGE INDEX



Useful contacts for community groups & others...feedback is essential.
Do be in touch to correct or add details or to suggest someone else deserving of listing.

Amenities Association	Jean Barker (Sec)	eea@elmswell.org.uk	241135
Art Club	Eddie Douglas	edward.douglas2@gmail.com	
Baby & Toddler Group		elmswellbtgroup@gmail.com	
Baptists	Dave Hollings	davehollings@btinternet.com	241323
BATS (Badminton & Table Tennis)	Mike Burgess Wilson	burgesswilsonmike@gmail.com	
Beavers	Ruth Salmon	ruthcourt4@hotmail.co.uk	
Bingo at Blackbourne	Brian Hawes		07761 125093
BWMA	Peter Edmonds (Sec)	edmondspeterj@gmail.com	07860 395720
Blackbourne – all enquiries	Parish Council office	clerk@elmswell.suffolk.gov.uk	244134
Brownies	Gemma Sutton	elmswellbrownies@hotmail.com	
CAB		advice@midsuffolkcab.org.uk	01449 676060
Carpet Bowls Club	Frank Boxall	jf.boxall@btinternet.com	
Christians Together in Elmswell	Peter Goodridge	elmswellrector@gmail.com	240512
Community Speed Watch	Marie Spampinato	mariespampinato@hotmail.co.uk	07769 715209
Companions	Linda Waspe	linda@labbott.plus.com	
County Councillor	Cllr Andy Mellen	Andy.Mellen@suffolk.gov.uk	
Cricket Club	Ben Whatling (Captain)	benwhatling@mail.com	07760 174811
Cubs	Mark Pernot	mark.pernot@gmail.com	
District Councillor	Sarah Mansell	Sarah.Mansell@midsuffolk.gov.uk	07860 829517
District Councillor	Jen Overett	Jen.Overett@midsuffolk.gov.uk	
Elmswheelians	Trevor Sadler	trevor.sadler@dsl.pipex.com	240908
Elmswild	Mary Feeney	info@elmswild.org.uk	241901
Exchange Afternoon WI	Carol Blissett	carolblissett@hotmail.co.uk	242884
First Responders	Merv	merv.smith@tiscali.co.uk	07909 006 496
Football	Chris Edmonds	edddd101@gmail.com	
Fox Bowls Team bowls at Blackbourne	Rob Dann	rccsdann@btinternet.com	07917 013846
Gardening Club	Nick	elmswellgadmin@btinternet.com	01359 242601
Guides	Viv	elmswellguides@outlook.com	
Health Centre - Woolpit			240298
History Group	Stella Chamberlin	stellachamberlin@yahoo.co.uk	
Ladies Voices (Choir)	Anna Wilton Mills	annawm63@gmail.com	
Library	Miles Row - Manager	Elmswell.Library@suffolklibraries.co.uk	240974
Little Elms	Paula Reynolds / Samantha Willers	info@littleelms.co.uk	240491
Newsletter	Editorial office	eea@elmswell.org.uk	244134
Over 55's Club	Diann Armstrong	Mayfield, Wetherden Road	241002
Parish Council	Parish Clerk	clerk@elmswell.suffolk.gov.uk	244134
Police Emergencies			999
Police; non-emergencies	Mid Suffolk South SNT	headquarters@suffolk.pnn.police.uk	101
Poor's Land Charity	Peter Goodridge	elmswellrector@gmail.com	240512
Power cuts		Powwercut105.com	105
Rainbows	Jen & Lizzie	elmswellrainbows@yahoo.com	
Royal British Legion	Norman Plumpton (Biff)	nplumpton@aol.com	07707 524722
School	Mrs Ash	admin@elmswell.suffolk.sch.uk	240261
Scouts	Paula Hollings	ddc.paula@stowmarketscouts.org.uk	07828 562485
St John's Church	Peter Goodridge	elmswellrector@gmail.com	240512
Sewing Bee	Isabel Burgess	isabel.burgess@live.com	
Village Tree Warden	c/o Parish Clerk	clerk@elmswell.suffolk.gov.uk	244134
Wesley – all enquiries	Parish Council office	clerk@elmswell.suffolk.gov.uk	244134
WI - evening	Tricia McNeeney	triciamcneeney@gmail.com	241197
Youth Football	Wayne	wsast@hotmail.co.uk	

**Enquiries on any Parish Council matter are invited to the Clerk, Peter Dow, at The Council Office, Blackbourne, Blackbourne Road, IP30 9UH - right next to the car park and with wheelchair access. Staffed Monday - Friday 9.00am - 4.00pm and other times by arrangement.
clerk@elmswell.suffolk.gov.uk Tel. 244134**

**IF YOU ARE NOT HAPPY THAT YOUR DETAILS APPEAR HERE,
PLEASE DO BE IN TOUCH VIA eaa @elmswell.org.uk**

What's On in Elmswell ?



To be included in our events diary make sure you send separate notification of your announcement.

For a full year's calendar of what's booked at Blackbourne, please go to the Parish Council website at www.elmswell.suffolk.gov.uk - it might help you in planning dates for your events.

May 2024

- 1 Exchange WI 2.00pm at Wesley. All about Bury Rickshaws. Speaker A member of the Rickshaw team
- 9 ELMSWELL HISTORY GROUP, 7.30pm; in Wesley Chapel. Speakers Jill & Richard Mann; Edith Cavell, E. Anglia's WW1 Heroine
- 9 Food 'n' Friends at Elmswell Baptist Church midday
- 9 Over 55's Club Tyler Kemp 80 year celebration of end of WW2 open evening
- 13 2pm Ladies Friendship Group at Elmswell Baptist Church - The Moses Project by Nicky Thomas
- 14 Elmswell WI 7.30pm at the Wesley - Annual Meeting
- 21 Elmswell Gardening Club 'The Perennial Mr Potter' with Bryan Thurlow at 7.30pm in the Wesley Chapel
- 23 Over 55's Club Bingo
- 31 Bingo - Doors open 6.30 eyes down 7.30 all welcome

June 2024

- 3 2pm Ladies Friendship Group at Elmswell Baptist Church - Photojournalism by Andy Abbott
- 5 Exchange WI 2.00pm at Wesley. The work of the Samaritans. Speaker Alison Chown
- 6 Over 55's Club Orwell Lady Afternoon Tea Cruise
- 11 Elmswell WI 7.30pm at the Wesley - Indoor Kurling with Alison Handley
- 13 ELMSWELL HISTORY GROUP, 7pm AGM in Wesley Chapel, immediately followed at 7.30pm by Speaker Sarah Doig's talk "The Real Basil Brown"
- 13 Food 'n' Friends at Elmswell Baptist Church midday
- 18 Elmswell Gardening Club 'Succulents' with Paul Sprakin at 7.30pm in the Wesley Chapel
- 20 Over 55's Club Entertainment by G & T Music
- 28 Bingo - Doors open 6.30 eyes down 7.30 all welcome

July 2024

- 3 Exchange WI 2.00pm at Wesley. A craft demonstration. Speaker Margaret Brackenbury

- 4 Over 55's Club Strawberry Supper & Bingo
- 9 Elmswell WI 7.30pm at the Wesley - Birthday Fish & Chips
- 11 ELMSWELL HISTORY GROUP Annual Outing - to be confirmed Details and Tickets from 01359-242601
- 11 Food 'n' Friends at Elmswell Baptist Church midday
- 16 Summer outing to RHS Hyde Hall in Essex
- 18 Over 55's Club Bob Whiting entertains Open Evening
- 26 Bingo - Doors open 6.30 eyes down 7.30 all welcome

August 2024

- 1 Over 55's Club Outing to The Hut at Felixstowe
- 7 Exchange WI 2.00pm at Wesley. Lighting the Fuse. Speaker Lucy Lewis
- 15 Over 55's Club Bingo
- 29 Over 55's Club Carvery and Circus at Gt Yarmouth
- 30 Bingo - Doors open 6.30 eyes down 7.30 all welcome

STOP PRESS

Regular sessions at Blackbourne & Wesley include:

KARATE with Lewis - Friday 5.00 - 7.00 info@greatheadma.com

JAPANESE JUJUTSU / SELF DEFENCE - Monday & Wednesday 6.30 - 8.30 ryoishintowaryuheiho@gmail.com tel. 07711 680262

BABY & TODDLER GROUP - Monday mornings elmswellbtgroup@gmail.com

BATS- badminton / table tennis / pool at Blackbourne Friday nights 7 - 9.30 simon@coakleyandtheaker.co.uk

BOWLS - barryhayward1902@gmail.com tel. 240951

GUIDES - elmswellguides@outlook.com

FOOTBALL - Chris Edmonds edddd101@gmail.com

RAINBOWS - elmswellrainbows@yahoo.com

JUNIOR FOOTBALL - smyth98@hotmail.com 07717 841591

CUBS Tuesdays 6.15 - 7.30 - mark.pernot@gmail.com

BEAVERS / SCOUTS - Wednesday 5.45 - 9.15 ddc.paula@stowmarketscouts.org.uk

OVER 55'S - every other Thursday 6.30 - 10.30 Diann Armstrong tel. 241002

CIRCLE DANCING - Thursdays 1.45 - 3.15 jenlerner@gmail.com

TREFOIL GUILD - 1st Tuesday monthly lesley.grout@btinternet.com

MARDLE QUILTERS - last Friday monthly carpajak@aol.com

MOO MUSIC - Fridays 12.45 - 3.15 bury@moo-music.co.uk

WI - evening at Wesley 2nd Tuesday monthly 7.30pm triciamcneeny@gmail.com

WI - afternoon at Wesley 1st Wednesday monthly Carol Blissett carolblissett@hotmail.co.uk

ART CLUB at Wesley every Tuesday 9.00 - 12.00 Eddie Douglas edward.douglas2@gmail.com

HISTORY GROUP at Wesley 2nd Thursday monthly 7.30 stellachamberlin@yahoo.co.uk

GARDEN CLUB at Wesley 3rd Tuesday monthly 7.30 elmswellgadmin@btinternet.com

CARPET BOWLS - Wednesday 7pm at Wesley - jf.boxall@btinternet.com

COMPANIONS - every other Friday 10 - 12 at Wesley - linda@abbott.plus.com

PILATES - Monday & Friday mornings - suzanne@triformpilates.co.uk

BINGO - Blackbourne, last Friday monthly doors open 6.30...eyes - down 7.30

ARTS SOCIETY OF WEST SUFFOLK first Tuesday monthly, October-June. Diana Hollins 01449 736930 theartssociety-westsuffolk.org.uk

If we've missed you out, do let us know...all enquiries to Ann at the Council Office Tel. 244134 Email clerk@elmswell.suffolk.gov.uk

Your Newsletter Fact File

For the next 3 months we need copy by: May 29th, June 26th, July 24th

Contact us on **01359 244 134** for all Amenities Association business, Newsletter and adverts.

Our new email address is **EAA@elmswell.org.uk** Your editors: Jean Barker, Maggie Bushell, Peter Dow

Published on the first Friday of every month by the Elmswell Amenities Association

Reg. Charity No. 304879. 2,000+ copies delivered free to households and to businesses in the community. A volunteer enterprise entirely supported by advertising.

PLEASE SUPPORT OUR ADVERTISERS



BULBS - ALTERNATORS - SHOCK ABSORBERS - COIL SPRINGS - WHEEL ALIGNMENT - REPAIRS - MOT PREP - WHEEL BALANCING - PUNCTURE REPAIRS

PROMECH

We cater for ALL your vehicle needs

SERVICING

ProMech Elmswell

MOT CENTRE

ProMech Elmswell

REPAIRS

ProMech Elmswell

DIAGNOSTICS

ProMech Elmswell

EXHAUSTS

ProMech Elmswell

TYRES

ProMech Elmswell

SUSPENSION

ProMech Elmswell

TRACKING

ProMech Elmswell

CLUTCHES

ProMech Elmswell

BRAKES

ProMech Elmswell

BATTERIES

ProMech Elmswell

AIR CON REGAS

ProMech Elmswell

RECOVERY

ProMech Elmswell

COURTESY CARS

ProMech Elmswell

CAMBELT/ CHAIN REPLACEMENT

ProMech Elmswell



KEY BATTERY REPLACEMENT - STARTER MOTORS - SPARK PLUGS - ELECTRICAL FAULTS - AIR BAG FAULTS - ENGINE MANAGEMENT LIGHTS - TPMS RESET

Most manufacturers recommend you service your car's air-con every two years, but many people wait until it's not blowing cold air. **Have you??**

Poor working air con will work the engine harder, thus using more fuel. It's not worth putting off a system check. **Call and book yours today.....**



01359 242420

Find us at: Station Road Industrial Estate, Elmswell, IP30 9HR